

CONTRACTORS' AUCTION

THURSDAY, MAY 19, 1994

10:00 A.M.

FINKSBURG, MARYLAND
(BALTIMORE, MARYLAND)

DIRECTIONS: On Old Westminster Pike, Finksburg, MD. From 695 Beltway take 795 to end at Rt. 140 continue on Rt. 140 to Jct. of Rtes. 140 & 91.

Having discontinued Maryland State Truck inspections and closing their service garage, Uhter Equipment has decided to sell all inspection equipment, heavy floor jacks, tools and new parts surplus to their present needs. Also, other area contractors will be selling their surplus items.

TRACK LOADERS & DOZERS

CAT 955L track loader with OROPS, G.P. bucket, 90% unc., 13X machine; KOMATSU D66 track loader with OROPS, G.P. bucket; (2) 1989 CASE 855D track loaders with OROPS, G.P. bucket, clearing package, 2,000 hrs.; CAT 955H track loader with pedal steer, power shift trans, S/N 8459; CAT 941B track loader with OROPS, G.P. bucket; JOHN DEERE 555A track loader with OROPS, G.P. bucket, S/N 338850T; 18 hp gas eng. track loader with OROPS, counter weights, fork bucket attach.; FIAT ALLIS HD11 dozer with OROPS, straight blade; INTERNATIONAL TD8E dozer with OROPS, 6 way blade, S/N 4420015-0010047; CASE 450B dozer with OROPS, 6 way blade, 1,800 hrs.

BACKHOES & TRENCHERS

CASE 580C loader backhoe with cab, extendahoe; CASE 480C loader backhoe with OROPS; FORD 535 loader backhoe with OROPS, G.P. bucket; JD 3 pt hitch backhoe attach, ex. cond.; BOBCAT 907 backhoe attach; DITCH WITCH 1420 walk behind trencher with gas eng.; DITCH WITCH J20 ride on trencher with backfill blade, gas eng., 1,200 hrs; CASE/DAVIS 25 + 4 trencher with backhoe attach, backfill blade; 2 cyl. Kohler gas eng., S/N 1162896.

RUBBER TIRE LOADERS

JOHN DEERE 544C with OROPS, S/N 506138; CASE W18 with OROPS, S/N 9109649.

SKID LOADERS

BOBCAT 853 skid loader with OROPS, diesel eng., S/N 503M1103; JOHN DEERE 575 skid loader with diesel eng., 1,400 hrs., S/N 370936; CASE 1845B skid loader with diesel eng., 700 hrs.; CASE 1835B skid loader with diesel eng., backhoe attach.; BOBCAT 743 skid loader with rebuilt eng., 0 hrs., S/N 5019M22119; BOBCAT 643 skid loader with diesel eng., S/N 5015M13701; BOBCAT 731 skid loader with Deutz diesel eng., S/N 12807; PRIME MOVER L1300 skid loader with diesel eng.; front mounted sweeper for CASE skid loader.

TRACTORS

JOHN DEERE 2950 with cab with air, 2,800 hrs.; JOHN DEERE 2555 with full cab with A/C & heat, dual hyd. 1,200 hrs.; FORD 6610 with rear mounted hydroswing mower, 2,200 hrs.; JOHN DEERE 935 with diesel eng., front mounted 60" deck mower.

STRAW BLOWER & HYDRO SEEDER

FINN straw blower with JD diesel eng.; REINCO 1,000 gal. hydroseeder mounted on INTL cab & chassis.

CRANE, FORKLIFTS

LORAIN 12 ton rough terrain crane with 65' boom & jib, diesel eng., full cab; HYSTER 6,000 lb. rough terrain forklift with gas eng., 34' reach with hyd. tilt; CAT V60 6,000 lb. forklift with pneumatic tires, diesel eng., side shift, S/N 83M329; CAT V50 5,000 lb. solid tire forklift with propane gas eng.; TOYOTA 5,000 lb forklift with pneumatic tires, gas eng.

EXCAVATORS & GRADALL

1983 CAT 225 hyd. excavator with 2,200 hrs.; CASE 125B hyd. excavator; 24" TRENCH PAC roller for excavator; GRADALL G660 with gas lower & diesel upper.

ROLLERS

EAGER BEAVER 150 1/2 ton hydrostat roller; HUBER 3-5 ton hydrostat roller; CASE VTR22 vibratory roller with diesel eng., double drum drive.

LOG SKIDDERS, LOADER & TRAILERS

TIMBER JACK 450 grapple log skidder with Cummins diesel eng., full cab with heat & air, 1,600 hrs., S/N CM4043; 1993 EVANS 48' trailer with mounted PRENTICE 410B knuckleboom log loader with 30' of boom, Detroit diesel eng., full cab with heat; FEC Model 2250 saw buck S/N 15453; 1991 COUNTRY BOY 40' log trailer; 1989 EVANS 40' log trailer.

TRUCKS

1985 MACK T/A R Model road tractor with 300 eng. 6 sp. trans., 38,000 lb. rears, double frame, wet line, P/S, A/C; 1983 FREIGHTLINER T/A conventional road tractor with Cat 400 eng., Jake brake, 13 sp. trans., A/C, 48" sleeper, alum. Budd wheels; 1975 KENWORTH T/A conventional road tractor with Cat 425 eng., 13 sp. trans., P/S, A/C, 44,000 rears; 1973 MACK T/A road tractor with 237 eng., 5 sp. trans.; 1981 FORD F700 lube truck with enc. body, 3208 Cat diesel eng., 5 sp., 2 sp. trans., fuel-grease-oil-hyd. oil reels; 1988 FORD F350 service truck with gas eng., auto trans.; 1987 FORD F700 flatbed dump with brand new 8.2 eng., 5 sp., 2 sp. trans.; 1987 FORD F700 high lift dump with 8.2 eng., 5 sp., 2 sp. trans.; 1984 FORD F350 flatbed with 12' body, new gas eng. with 30,000 miles, 4 sp. trans.; 1989 FORD Super Duty with 12' flatbed dump, 7.3 diesel eng. 5 sp. trans., pentahook; 1980 MACK cab-over trash truck with 20 yd. Leach body, diesel eng., 6 sp. auto trans.; 1979 KENWORTH W900 T/A dump with 14' alum. body new in '87, Cat 3406 eng., Jake brake, 44,000 rears; 1974 MACK T/A dump with 237 eng., 6 sp. trans., steel body; 1971 KENWORTH T/A dump (glider kit) with 8V71 eng., 15 sp. trans., 38 rears; 1983 INTERNATIONAL 1900 S/A dump with DT466 diesel eng., 2 sp. trans., air brakes; 1990 ISUZU cab & chassis with diesel eng., auto trans., short wheel base; 1985 FORD F700 cab & chassis with gas eng., 5 sp., 2 sp. trans.; 1985 FORD F350 cab & chassis with diesel eng., 4 sp. trans.; (3) 1988-1989 FORD F350 crew cab pickups with gas eng., auto trans.; 1985 EL CAMINO.

TRAILERS & CONTAINERS

1987 EAGER BEAVER 35 ton detachable trailer; 1973 ROGERS 35 ton detachable trailer; 1985 EAGER BEAVER 9 ton equipment trailer; 1994 TOW MASTER T20 10 ton tag-along trailer with air brakes; 1988 BAME 9 ton tri-axle equipment trailer; 28' alum. dump trailer; 1977 FONTAINE 45' drop deck trailer with ramps, 102" wide; (3) 20' sea containers; (2) 40' sea containers.

AIR COMPRESSORS & HYDRO HAMMERS

DAVEY 190 cfm air compressor with Ford diesel eng.; LEROI 185 cfm air compressor with Deutz eng., S/N 3056X658; BMC hydro hammer with gas eng.; ARROW hydro hammer with gas eng.

MISCELLANEOUS

JOHN DEERE & WOODS 3 pt. rotary mowers; 8' 3 pt. sweepster broom; Cushman with dump bed; BRADCO 3 pt. trencher; (8) WACKER tampers; MILLER 220 wire feed welder; 10 hp gas air compressor; SNAP-ON tool box; SNAP-ON & misc hand tools; power hack saw; cut-off saw; road core drill; truck, tractor & backhoe tires; new construction road signs & stands; new batteries; new INTL truck parts; (6) portable truck scales; truck transmission jack; 10,000 lb. air operated truck jack; 4" trash pump with 2 cyl. Wisconsin eng.; other misc parts, tools and small items too numerous to mention.

TERMS OF SALE: COMPLETE PAYMENT SALE DAY. Payment for all items must be made in full on sale day with Cash, Cashier's Checks. Personal or Company Checks accepted when accompanied by a Valid Bank Letter of Guaranteed Payment. Items sold "As-Is, Where-Is" with no warranties expressed or implied. Immediate removal. Not responsible for accidents.

HOTELS: Lee's Motel (410) 848-9095; Days Inn Motel (410) 857-0500.

INSPECTION: Wednesday, May 18, 1994. Sale site phones (410) 833-9012 or (410) 861-8080.

SUBJECT TO ADDITIONS & DELETIONS

NEXT AUCTION: SATURDAY, JUNE 18, 1994

FOR VALLEY DRILLING, UPPERVILLE, VIRGINIA

INDUSTRIAL AUCTIONS, INC.

(800) 443-9580 • (717) 334-0066

585 Martin Road, Gettysburg, Pennsylvania 17325

Wolfe

Randy Ruby, President

Sale Reports**KNAUB SALE**

A Public Auction of farm equipment was held May 7 by Harvey Knaub, 4724 Druck Valley Road, York, Pa. Some prices included: 1932 Ford V8 sedan \$10,000, 1955 Ford Fairlane \$3000, Ford

8N tractor \$2100, 3 pt. boom pole \$90, 2-bottom plow \$150, 2 scraper baldes \$90 & \$140 and 2 railroad lanterns \$50 & \$75.

Rentzel's Auction Service conducted the sale.

T.B. LUMBER SALE

A Public Auction of building materials was held May 6 by T.B. Lumber, on Rt. 235 between Oriental and Seven Stars north of Harrisburg, Pa. There were 260 registered bidders at the sale.

Some prices received were: patio doors \$450 each, steel entrance doors \$90 to \$130, shingles \$2 to \$4 a bundle, 1970 U-Haul van \$800, stock tanks \$75 ea., Railroad ties \$7, bath tubs \$100 to \$170 ea., Peach Tree windows \$50 to \$150.

Kenneth E. Hassinger and Neil A. Courtney were the auctioneers.

TOY SALE

A Toy Auction of steel and tin boys was held May 7 at the Ridge Fire Co., along Rt. 23 between Phoenixville, Pa. and Rt. 100.

Some prices were: restored Buddy L van \$300, unrestored Steelcraft fire truck \$250, Buddy L hydraulic dump truck \$300 and Marx tin fire station \$225.

Ted Maurer managed the sale.

FREED**ESTATE SALE**

A Public Auction of antiques and collectibles was held May 7 for the estate of Margaret G. Freed, off Main Street in Freeburg, Pa.

Some prices were: J.H. Dipple 1 gal. tulip jug \$875, grained flour chest \$600, blanket chest \$600, three drawer blanket chest \$650, baskets \$25 to \$75 ea., meat benches \$10 to \$15 ea., chestnut pie cupboard \$175, side by side refrigerator \$175, 30" electric stove \$175, G.E. washer \$150 and Whirlpool dryer \$50.

Kenneth E. Hassinger and Neil A. Courtney were the auctioneers.

LEIBY SALE

A One Owner Collection of guns and antiques was held May 6 at the Leesport Farmer's Market Banquet Hall off Rt. 61 at north end of Leesport, Berks Co., Pa.

Some prices included: sausage stuffers \$90, \$65 & \$55, blanket chest \$160, goose-wing axe \$175, broad axe \$75, Parker 12 ga. dbl. barrel \$1500, L.C. Smith dbl. barrel \$1100, Parker 12 ga. dbl. barrel \$575, Remington dbl. barrel \$260, Remington 760 30-06 gun \$300, Winchester model 70 270 cal. \$560, Winchester model 70 30-06 \$500, gun safe \$1025, Marlin 30-30 \$265, Savage model 99 \$285, Winchester 30-30 \$275, Remington 7600 243 cal. \$300 and Remington 870 12 gauge pump \$225.

Kenneth P. Leiby was the auctioneer.

ABSOLUTE PUBLIC AUCTION

Due to losing my lease on the Leonard Farm & Orchard property, I will sell the following articles the property located approx 2 miles west of I-81 at Exit 12 onto Arden Rd (Rt 45 west) Martinsburg, WV on:

SATURDAY, MAY 21, 1994
at 10:00 a.m.****FARM MACHINERY****

DB 885 tractor/loader-DB 885 tractor - INT 300 utility tractor - 1954 Ford tractor - INT super II tractor - Farmall cub/cults - several sets 3 pt plows - discs - INT side draft disc - JD field chopper - NH 270 baler/thrower - bush hogs - woods 7' pull type mower - lily spreader - cults for H tractor - white 4 row #543 corn planter - INT 7-13 grain drill - Ford 7' mower - spring tooth harrows - manure spreaders - and other farm related articles.

****MACHINERY & VEHICLES****

White 4000 road tractor/sliding 5th wheel - 30 ton lowboy trailer - INT 175 loader - 1969 Mustang (restored) - 1966 Mustang - 1971 Chev Nova - 1970 INT 10 wheeler/22' dump bed - 1967 Chev 2T dump trk - 1974 Ford 350 stake - 1979 GMC 1 ton (no bed) - 1956 Ford 1 1/2 ton stake - 1974 jeep 4 WD/snow plow - miller welder - Hobart welder - Lincoln welder (all on trailers) - air compressor - air tools wooden & alum ladders - lot tools including saws - drills - jacks - wrenches & etc. tires (tractor-truck-auto) saddles - harness - single - double - triple trees - bridles - hames - chain saws - lot old vehicle radiators.

****HOUSEHOLD ARTICLES****

Old sewing machine - leather sewing machine - churn - butter prints - lard press (2 gal - 1 gal) - old record player lot of old records - 1898 antique shoe/harness repair kit - cream can and other articles.

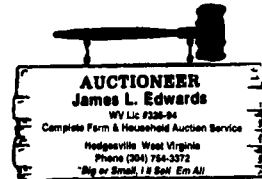
****GUNS****

Hiawatha Mod 130-410 ga pump - Stevens 22 cal bolt - Stevens Mod 94C 12 ga - revaluation Mod 350 A 12 ga-Westernfield mod 550A - 12 ga pump - Stevens Mod 15 22 cal - Marlin Mod 336 30-30 - Iver Johnson 12 ga-excel 12 ga-savage Mod 3 C 22 cal.

****LARGE CIDER PRESS****

Large commercial cider press previously owned by Jim Noll of Nolville, WV lot of cider barrels.

TERMS: Cash or Good Check



APP. AUCTIONEER:

R. G. "Duke" Edwards

WV Lic #A99

CLERK:

P.G. Gregory, Jr.

Charles Bartgis David S. Smith

Not Responsible for Accidents
Lunch Rights Reserved