

**MAILBOX MARKET
FOR SALE**

JD 7000 compplanter 4x30 dry insect. monitor \$5000, good cond. Franklin Co 717-532-4988.

Clark 2000 lb. capacity forklift LP gas runs good \$1500, solid tire, new 30 gal LP gas water heater \$199.50. Spring Garden Plumbing, 339 Spring Garden Rd 717-442-9622 8 am

Cement mixer, elec. motor \$150. 1946 Chev motor transmission 500 gal. gas tank and pump \$125. Balto. Co. Md. 410-666-1680.

AKC reg. great dane males 1 yr. old 1 black, 1 fawn, shots and wormed. Union Co. 717-966-9309.

IH Cub loby with mower 800 hrs GC 277 Chev C30 truck whole or parts. Montg. Co. after 7 215-674-2069.

JD three bottom 14" plow with 3 pt. hitch \$350. Crop sprayer 27' booms, 400 gal. tank centrifugal pump \$650. Bucks Co. 215-257-2377.

Hustler 295 commercial mower zero turning full hydrostatic 6 ft. cut, looks and runs great \$3000 after 5.00. 717-664-4075.

75 pallets 5'6"x7'6" used 2 yrs. for hay \$14 each. Berks Co. after 7 p.m. 610-926-2694.

1968 Chevy 1968 International trucks with beverage body, good cond. \$2500 each. Delaware Co. 717-485-3584.

Hay, timothy and orchard grass mix, \$1.25 per bale, 30 bale minimum, York Co. 717-774-4615.

New trailers/6x12 tilt bed, \$750. Tandem 6x16 4 brake, 7000 GVW pull with small truck, nights. Lanc. Co. 717-687-7336.

135 Gehl grinder mixer 5000 lb. capacity with blower and electric scale, good cond. \$3900. Berks Co. 610-683-7119.

10'6" John Deere 225 Killifer disc harrow, Pleasant Run Farm, Monmouth Co. Allentown, NJ 609-259-2642.

Angora goats mother and newborn baby, both registered animals, produce mohair. 609-259-1102 leave message. Monmouth Co NJ will deliver.

Lancaster Farming, Saturday, May 14, 1994-B23

Straw 14' Dion s.u. wagon NH 256 rolabar rake, N.H 30 1000 RPM blower. Leb. Co. 717-865-3453.

Int. 656 gas hydro loader like new, \$6300. Luz. Co 717-287-4670.

All JD #25 combine, 24-T baler, #43 & 12B trailer & stationary corn shellers, hay fluffer w/new tines-tires, #5 mower, 69-45 combine. Hunterdon Co 908-782-1725.

Fainting goats good bloodlines parakeet breeders white finches diamond doves button quail pearl cockatiels nesting boxes Cumb. Co. 717-423-6620.

1986 Oldsmobile Delta-88 74K-Mi. nice \$3500, pair 8.25-20 tires like new, \$100, 5-spd. trans. for F-700 Ford trk. Wanted Farmall-A- rim- rear. York Co. 717-382-4928

NH 316 hay baler, Mayrath hay elevator, both in like new cond. Fulton Co. 814-685-3345 eves.

NH #36 flail chopper, 6' Cat #650, nice new flights for old style smoker-elevator \$60. Southern York Co 717-235-6733.

Plasson drinkers \$1 ea, orig. cost \$16, female pygmy goat \$75, male guinea pig \$3, 10 spd. bike \$10 Lanc Co 717-786-9070

AC D-14 sharp \$3000, WD45 \$1200, 2x & 3x SC, B & G plows, WD cults, other AC parts & equipment Lanc Co 717-284-2640

160 Krone round baler 1 yr old good hay baler 4x5 bale. Lanc. Co 717-733-4263.

AC model B, good rubber, engine, cult, \$1400, Brillion 12' cultimulcher transport model, good cond, \$2600. Leb Co 717-273-6018.

Hog loading chute adjustable heights \$50 OBO 12 ton feed bin rough you take down \$75 OBO. York Co 717-229-2720.

One IHC corn binder needs new wood Box 260, Echo Valley Rd, New Carlisle, Pa. 16141, Beaver Co, Pa 412-336-6406

NH 68 baler \$600, 2- JD hay rakes on steel \$100, Ontario hoe drill on rubber \$200, 3 pt. 2 row cult, \$175. Col Co 717-799-0247 eves

2 Boston terrier female, 2 mix dogs females, 1 Jack Russel dog female Lanc Co 717-733-6825

Grader box 3 pt. hitch, 5 1/2' wide w/ripper teeth & backblade, excel. shape \$275 West Chester, Chester Co 215-696-3425

Pipeline milker for 60 cows, 400 gal. bulk tank, kitchen aid dishwasher 140'x40 dairy barn to remove 717-877-4495

Oliver 2-14 trailer plow new shares field ready \$150, also Oliver 60 good tires 12 volt cults avail. \$900 717-866-6485 after 6

Meyers hay cond very good cond., shed kept, \$290 Owners manual included Harford Co Md 410-452-5308 after 4 30 p.m.

12' JD spring harrow, 10' weeder, JD 813 plow frame Lanc Co 717-665-5728.

Grimm hay tedder, good working cond., 1000 lb. platform scales, good, locust posts seasoned, 8' Craftsman table saw good Lanc Co 717-354-7151.

Dismantled 1956 Cat D2 tractor, good direct elect engine, good hyd's weak u.c., no fuel tank or blade, \$2000. Lanc Co 717-445-4463.

4 row Ford corn planter wide row w/fiberglass boxes w/cyl, heavy 14' IH offset disc w/cyl. both A-1 York Co 717-244-3974

Disc drill on steel wheels, cheap, 6 Surge milking units 1-301-689-8245

Landis leather splitter \$325, kerosene iron \$80, Adler leather sewing machine \$2200, Mack N O S pressure plate \$120, sandblast \$20 216-733-7044

Siberian husky puppies shots & wormed, ready to \$200, May 8, German Shepherd puppies, Mastiff puppies & other breeds All puppies have papers Lanc Co 717-665-4537

NH 68 baler \$425, NI #10 corn picker \$450 Adams Co 717-359-5506

JD 234 corn head off 55 combine \$200 w/filler plates or sprockets for 55 combine \$350 Carroll Co 410-756-6282

Slightly used steering cyl off 580SE cable type hour-meter off 941B thor 90 lb jack hammer, Pippin backhoe attachment Adams Co 717-677-7023

Good used solo back pack mist blower sprayer \$285 Lanc Co 717-656 8036

Woods RM60 3 pt 6' finishing mower like new 717-653-6444

Approx 400 bales mixed hay \$175 bale, \$85 ton, also 100 bales oats straw \$1 bale York Co 717-741-3089

Large forge, cast iron w/ elect blower, smoke pipes \$500 deep seat saddle, very comfortable, \$200 must see Adams Co 717-624-4153

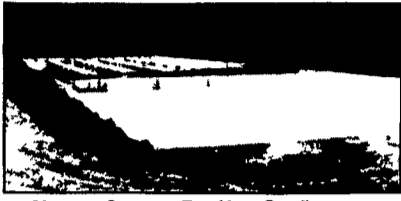
JD 450 crawler loader 4-in-1 bucket 75% undercarriage \$11,500 Perry Co 717-582-4516 after 5 30 p.m 717-582-4672

Since 1972... The Original And The Largest

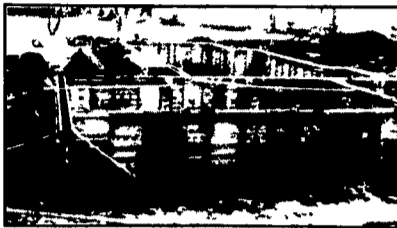
**POURED SOLID CONCRETE
STORAGE SYSTEM SPECIALISTS**



Far Left: 1-Million Gallon Circular Manure Storage Tank
Far Right: 2 Silage Pits In-Barn Manure Receiving Pit



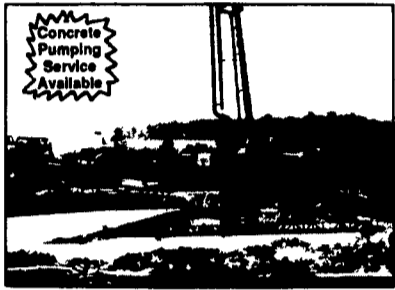
Manure Storage For Hog Confinement



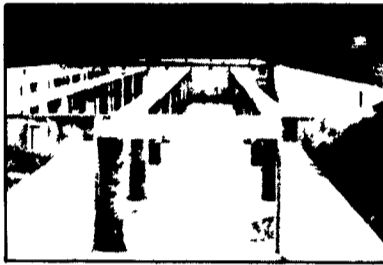
House Foundation Wall



300' Long Manure Pit For Hog Confinement



92' Boom Placing Concrete



Concrete Pit Set-Up For Slatted Floors

Take the questions out of your new construction.
Call Balmer Bros. for quality engineered walls.

Invest in Quality -
It will last a lifetime.

All sizes
available -
round or
rectangular

Balmer Bros.
CONCRETE WORK, INC.

243 Miller Road
Akron, PA 17501
(717) 733-0353
6:30 AM - 3:30 PM
(717) 859-2074
After 6:00 PM

WE PROUDLY SALUTE OUR

DAIRY INDUSTRY

LANCASTER FARMING'S
ANNUAL

DAIRY ISSUE
June 4



Reaching Over 50,000 Dairy & Farm Industry Readers

FEATURING...

- Special dairy stories and features
- Local Dairy Association news
- What's new in dairy research
- Marketing - Dairy's future
- Favorite dairy recipes

ADVERTISERS...

Get Complete Coverage by Reserving
Your Space Now In This Special Issue.
DEADLINE FOR ADS - MAY 27

Phone 717-626-1164, 717-394-3047 or 717-733-6397

**BEST SELLER:
1993 ADC Annual Report**



Read why Atlantic Dairy Cooperative has been the choice of dairy farmers for 77 years ADC is the place to be for dairy farmers who are uncertain about their milk market For your free copy of our 1993 annual report, please contact

Atlantic Dairy Cooperative
1225 Industrial Highway
Southampton, PA 18966
1-800-645-MILK

