

**EMHERR**

**YOUR COMPLETE FARM AND HOME CENTER**  
If We Do Not Have It, WE'LL GET IT!

**KING KUTTER, INC. ROTARY MOWERS**

The King Kutter Rotary Mower is a leader in performance and quality. It is constructed with a single top sheet welded to heavy I-beams and reinforced with spider and cross bracing for long lasting, heavy-duty

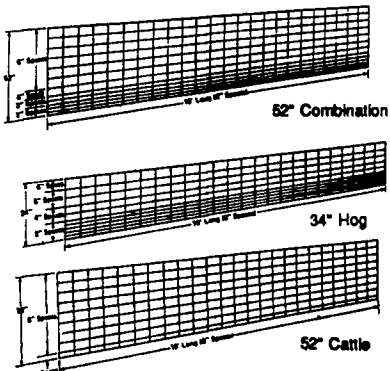


7' Model Shown

**NOW IN STOCK:**

- 5' 3 Pt. List to \$629.00 SALE \$559.99
- 6' 3 Pt. List \$870.84 SALE \$759.99
- Heavy Duty 7' 3 Pt. List \$2,029.84 SALE \$1,899.99

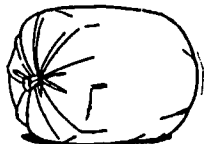
**STOCK GUARD FENCE PANELS**  
Hot-Dipped Galvanized After Welding



Also Available:  
34"x16' Hog Frame With 2"x6" Opening Top To Bottom

**Agri-Tuf® Hay Bale Bags**

10 Per Case  
All Bags .5 Mil Thick



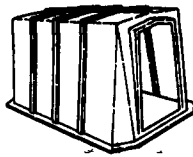
Buy Now And SAVE! **TAFCO** GALVANIZED All Sizes Listed Can Be Sold UPS



SIZE	SINGLE SPEED	VARIABLE SPEED
12"..... 720130	\$ 93.99	79044 ..... \$109.99
16"..... 790131	\$134.99	790136 ..... \$169.99
20"..... 790132	\$154.99	790137 ..... \$189.99
24"..... 790133	\$229.99	790138 ..... \$259.99

**POLY CALF HUTCH**

These Poly Calf Hutches are designed to help you raise young calves. Each hutch is manufactured from an opaque material, which prevents them from overheating in summer use. The hutches can be used for summer or winter use all hutches have a rear vent opening. The standard hutch is equipped with a feed door and ridge vents



PROTECT CALVES FROM WEATHER EXTREMES

SALE \$199.00

**BALER TWINE**



Brazilian Twine:  
9000' or 7200'

\$18.99 20 Bales or More  
(0-19 Bales \$19.59)

**GUARANTEED QUALITY! - COMPARE!**

Tensile Strength 7200 - 425 lb. Knot Strength 7200 - 180 lb.  
9000 - 350 lb. 9000 - 190 lb.

ALSO IN STOCK: 20,000' Polypropylene Baler Twine

**NORWESCO POLY STORAGE TANKS**

- A Quality Product at a Fair Price
- 3 Year Warranty
- Vertical Tanks - Sizes From 65 Gal. -5000 Gal.
- Horizontal Tanks - Sizes From 20 Gal. - 1000 Gal.

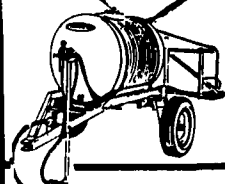
425 Gal. ....	\$199.00	1000 Gal. ....	\$329.00
550 Gal. ....	\$259.00	1500 Gal. ....	\$429.00
2100 Gal. ....	\$729.00		

See Our Acre of Tanks - Many, Many Other Sizes In Stock



**QUALITY SPRAYER EQUIPMENT**

- LG-55 3 Pt. Less Pump With 3 Row 140" Boom..... \$379.99
- AGRI 110 & 150 Gal. 3 Pt. Less Pump With 8 Row Boom..... \$799.99
- AGRI 200 Gal. 32" d. Trailer Less w/8 Row Boom..... \$1,199.99



**"STOCK GUARD" TUBULAR 1 5/8" ROUND CORNER GALVANIZED CATTLE GATES**



4' 6 bar 1 5/8" Galv. ....	\$30.99	12' 6 bar 1 5/8" Galv	\$51.99
6' 6 bar 1 5/8" Galv. ....	\$36.99	14' 6 bar 1 5/8" Galv	\$61.99
8' 6 bar 1 5/8" Galv. ....	\$47.99	16' 6 bar 1 5/8" Galv.	\$72.99
10' 6 bar 1 5/8" Galv. ....	\$49.99	18' 6 bar 1 5/8" Galv	\$82.99

★ Full Line Parts Dept. ★  
★ Sell, Service & Install ★



Rt. 272 South  
14 Herrville Road  
Willow Street, PA 17584  
Ph: 717-464-3321 or  
Toll Free 800-732-0053

Store Hours:  
Mon.-Sat. 7:30AM to 8:00 PM



5-14

BUY, SELL, TRADE OR RENT THROUGH THE  
**CLASSIFIED ADS**

PHONE: 717-626-1164 or 717-394-3047  
FAX 717-733-6058

Mon., Tues., Wed., Fri. 8 AM to 5 PM; Thurs. 7 AM to 5 PM

**MILLER PRO**

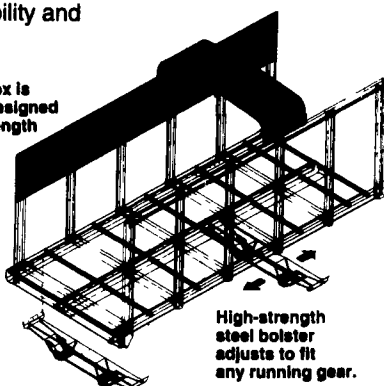


See our Forage Boxes and Dump Boxes in action!  
Call your dealer or 1-800-247-5557

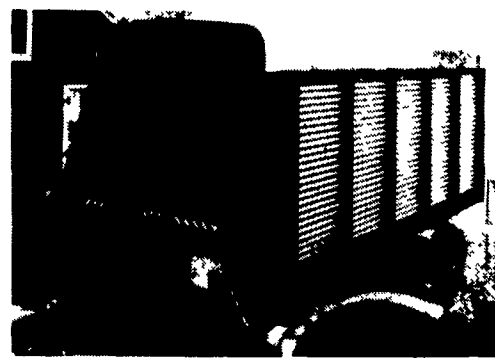
**5100 Forage Boxes**

- Independent feathering clutches for metering augers and outfeed
- 4-speed transmission operates in a sealed oil bath
- Wide body and crop clear roof
- Unitized high strength steel box on all 5100 models assures dependability and long life

The 5100 Box is computer designed for best strength to weight ratio and low center of gravity.



High-strength steel bolster adjusts to fit any running gear.



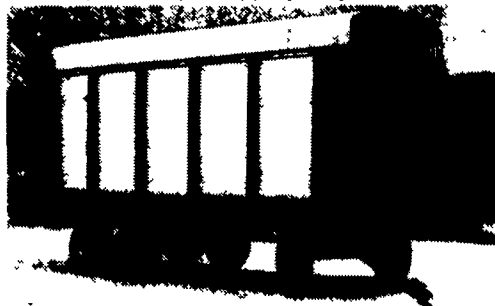
4-Speed shift-under-load gear transmission operates in an enclosed oil bath for long life.

**Optional Miller Pro Running Gear**

- Choice of models from 10 - 14 tons
- Automotive-type steering
- C-Channel design for best stability and tracking

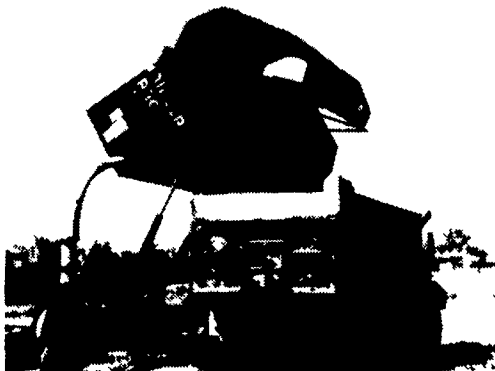
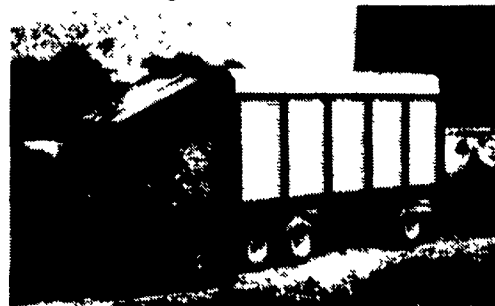
**Front & Rear Unload Forage Box**

- Positive mechanical 2-direction drive
- Easy direction change by simply moving a drive coupler
- Super slippery Poly-clad floor



**Rear Unload Forage Box**

- 30-second mechanical unloading
- Unobstructed unloading with high rear door hinges
- Automatic rear door



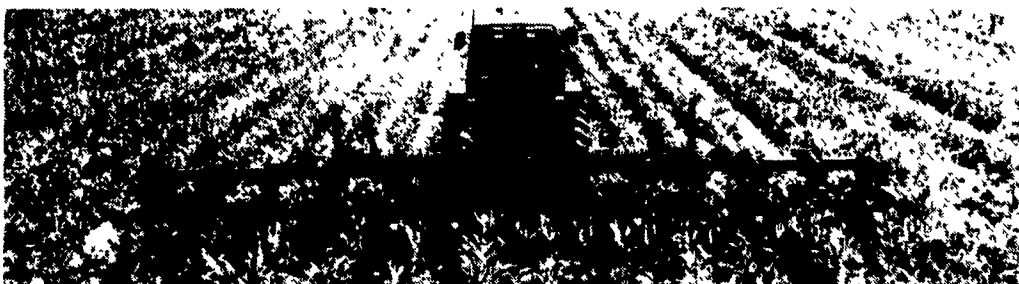
**Hydraulic High Lift Dump Boxes**

- Great for forage crops or grain
- 800 or 1100 cubic foot models
- Low loading height
- 11 foot dumping clearance
- One minute unloading
- Cart models available



**Model T100 Rotary Rake**

- Exclusive hydraulic raking height adjustment
- 11 tine arms gently lift and release crop with no roping and minimum leaf loss
- Rakes fluffy windrows for less drying time
- Rakes 10'-6" swath for 13'-5" working width
- Fully enclosed oil bath gearbox
- Swath curtain bolted to steel frame



**High Clearance, Minimum Till Row Crop Cultivators**

- 4-row, 6-row, 8-row & 12-row models
- Easy adjustment & maintenance
- 25" crop clearance
- Maximum gang stability
- Hydraulic fold
- Efficient soil penetration
- Accurate depth control



**Miller Pro Retail Financing**

0% interest for 24 months on 5100 Forage Boxes. Competitive rates and programs on all other Equipment.

See your dealer...or call Miller Pro today! 1-800-247-5557

**Profit Making Products for the Professional Farmer**