

**Central U.S. Carlot**

Pork Report

Wednesday, May 11, 1994

Report supplied by USDA

CENTRAL U.S. CARLOT PORK REPORT FOB OMAHA BASIS INCLUDES MAJOR PRODUCTION AREAS IN MIDWEST AS OF 3 P.M.

COMPARED TUESDAY'S 3:00 P.M. CLOSE: FRESH LOINS MOSTLY 1.00 HIGHER; BUTTS GENERALLY 1.00 HIGHER; SKND. HAMS 17-20 LBS. STEADY TO 1.00 HIGHER, 20-26 LBS. STEADY; SDLS. BELLIES STEADY TO 2.00 HIGHER. TRADING MOSTLY SLOW TO MODERATE, WITH EXCEPTION OF TRIMMING AND BONELESS PROC. CUTS, WHICH ARE ACTIVE. DEMAND LIGHT TO MODERATE FOR MOSTLY MODERATE OFFERINGS.

81.5 LOADS PORK CUTS  
60.0 LOADS TRIM/PROCESS PORK/ PORK CUTS

LOINS, REGULAR, FRESH  
14-18 LBS., \* 10.5 LOADS, RANGE 101.00-109.00, WGHTD. AVG. 107.38.  
1/4" TRIM 14-18 LBS., 6.5 LOADS, RANGE 120.00-129.00, WGHTD. AVG. 125.62.

1/2" TRM/LESS 14-18 LBS., 4.0 LOADS, RANGE 134.00-135.00, WGHTD. AVG. 134.75.

18-22 LBS., \*, 1.0 LOADS, RANGE 101.00, WGHTD. AVG. 101.00.

1/2" TRIM 18-22 LBS., 1.0 LOADS, RANGE 120.00, WGHTD. AVG. 120.00.

COMBOS 22 LBS. AND UP, RANGE 73.00, WGHTD. AVG. 73.00 E.

LOIN, BNLS. CNTR CUT

5-9 LBS. STRAP-ON, 0.5 LOADS, RANGE 233.00, WGHTD. AVG. 233.00.

5-9 LBS. STRAP-OFF, 1.0 LOADS, RANGE 237.00-249.00, WGHTD. AVG. 243.00.

TENDERLOIN 1.25 LBS. AND DOWN RANGE 337.00, WGHTD. AVG. 337.00 A.

PICNIC, FRESH  
SMKR TRM, RS, COMBO  
2.0 LOADS, RANGE 38.00, WGHTD. AVG. 38.00.

COMMODITY 4-8 LBS., RANGE 30.00, WGHTD. AVG. 30.00 E.

BOSTON BUTT  
4-8 LBS., 5.0 LOADS, RANGE 67.00-72.00, WGHTD. AVG. 70.30.

1/2" TRIM 4-8 LBS., 5.0 LOADS, RANGE 85.00-90.00, WGHTD. AVG. 88.30.

SPARERIB, FRESH  
1.5-3.5 LBS., 1.5 LOADS, RANGE 124.00, WGHTD. AVG. 124.00 .

LOIN BACKRIB (BOXED)  
FRSH/FRZEN

1.75 LBS. AND DOWN, RANGE 250.00, WGHTD. AVG. 250.00 D.

1.75-2.00 LBS., RANGE 235.00, WGHTD. AVG. 235.00 A.

HAM, SKINNED, SELECTED  
FRESH 17-20 LBS., 5.0 LOADS, RANGE 55.00-56.00, WGHTD. AVG. 55.20.

FRESH 20-26 LBS., 24.0 LOADS, RANGE 53.00-56.00, WGHTD. AVG. 54.33.

HAM, SKINNED, COMMODITY  
17-20 LBS., RANGE 54.00, WGHTD. AVG. 54.00 A.

FRESH 20-26 LBS., 1.0 LOADS, RANGE 51.00, WGHTD. AVG. 51.00.

FRESH 32 LBS. AND UP, 2.0 LOADS, RANGE 51.00, WGHTD. AVE. 51.00.

BELLY, SDLS, SKIN-ON, FRESH  
FRESH 10-12 LBS., RANGE 38.00, WGHTD. AVG. 38.00 C.

FRESH 12-14 LBS., 14.0 LOADS, RANGE 40.00-44.00, WGHTD. AVG. 41.71.

FRESH 14-16 LBS., 9.0 LOADS, RANGE 40.00-44.00, WGHTD. AVG. 41.71.

FRESH 16-18 LBS., 5.0 LOADS, RANGE 39.00, WGHTD. AVG. 39.00.

FRESH 18-20 LBS., RANGE 37.00, WGHTD. AVG. 37.00 A.

FRESH 20-25 LBS., RANGE 35.00, WGHTD. AVG. 35.00 A.

PORK TRIMMINGS/  
BONELESS PROCESSING PORK  
(CHEMICAL LEAN)  
COMBO 42% FRESH, 11.5 LOADS, RANGE 25.00-28.00, WGHTD. AVG. 26.22.

COMBO 72% FRESH, 17.5 LOADS, RANGE 37.00-38.50, WGHTD. AVG. 37.40.

BOXED 72% FROZEN, RANGE 43.50, WGHTD. AVG. 43.50 A.

PICNIC CUSHION MEAT  
BOXED 92% FROZEN, RANGE 90.00, WGHTD. AVG. 90.00 E.

BONELESS PICNIC MEAT  
COMBO 72% FRESH, 8.0 LOAD, RANGE 38.00-39.00, WGHTD. AVG. 38.25.

BOXED 72% FROZEN, 6.0 LOADS, RANGE 42.00-44.00, WGHTD. AVG. 42.33.

SHANK MEAT  
FROZEN, 4.0 LOADS, RANGE 61.50, WGHTD. AVG. 61.50.

SKINNED JOWLS  
COMBO FRESH, 13.0 LOADS, RANGE 23.00-28.00, WGHTD. AVG. 23.73.

BOXED FROZEN, 1.0 LOADS, RANGE 30.00, WGHTD. AVG. 30.00 E.

NOTE! (\*) REFLECTS 1/2" OR 3/4" TRIMMED PRODUCT BROUGHT BACK TO A REGULAR COMMODITY BASIS.

ABCDE AFTER QUOTES REPRESENTS DAYS SINCE LAST ACTUAL MARKET TEST. QUOTES ARE DROPPED AFTER 5 DAYS OF NO TEST OR BEFORE IF THEY NO LONGER REFLECT CURRENT MARKET CONDITIONS.

PORK CARCASS CUTOUT  
WEDNESDAY, MAY 11, 1994

ESTIMATED GROSS CUTOUT VALUES OF A 175 LB. HOG CARCASS BASED ON USDA CUTTING YIELD TESTS AND CARLOT PRICES. WEDNESDAY'S CARCASS GRADES AND PRICES PER CWT.:

US#1 60.09, CHANGE FROM TUESDAY'S VALUE 0.64; US#2 58.25, CHANGE FROM TUESDAY'S VALUE

0.63; US#3 56.39, CHANGE FROM TUESDAY'S VALUE 0.60; US#4 54.55, CHANGE FROM TUESDAY'S VALUE 0.59.

TODAY'S CALCULATIONS FOR USA#2 175 LB. PORK CARCASS:

SKINNED HAMS, 14-20 LBS., 21.01% OF CARCASS, 54.50 FOB VALUE;

LOINS, 1/2" TRIM, 14-22 LBS., 20.33% OF CARCASS, 122.00 FOB VALUE, 2.00 CHANGE FROM TUES.

BELLIES, SDLS, 12-14 LBS., 13.90% OF CARCASS, 42.00 FOB VALUE, 0.75 CHANGE FROM TUES.; SPARERIBS, 3.5DN LBS., 3.03% OF CARCASS, 124.00 FOB VALUE.

PICNICS, 8-12 LBS., 10.31% OF CARCASS, 25.75 FOB VALUE; BUTTS, 1/2" TRIM, 4-8 LBS., 7.25% OF CARCASS, 87.50 FOB VALUE, 1.00 CHANGE FROM TUES.

JOWL, 2.85% OF CARCASS, 23.75 FOB VALUE. 0.75 CHANGE FROM TUES.; NECKBONES, 1.52% OF CARCASS, 10.00 FOB VALUE.

FEET, 1.05% OF CARCASS, 13.00 FOB VALUE, 1.00 CHANGE FROM TUES.; TAILS, 0.22% OF CARCASS, FOB VALUE 20.00, 4.00 CHANGE FROM TUES.

TRIM 72%, 2.19% OF CARCASS, 37.25 FOB VALUE; LARD 10.85% OF CARCASS, 14.50 FOB VALUE.

TOTAL CARCASS 94.51%. US#2 CARCASS VALUE PER CWT. 58.25.

NOTE: VALUE MAY CHANGE WITHOUT ADEQUATE TEST.

**Indiana Livestock**

Homer City, PA

Thursday, May 12, 1994

Report supplied by Auction

CATTLE: HIGH CHOICE & PRIME 70.00-72.00, CHOICE 67.50-70.00, SELECT 65.00-67.00 SELECT & CHOICE HOLSTEINS 58.00-62.00.

HEIFERS CHOICE 71.50, SELECT 66.00-71.00.

COWS: BREAKING UTILITY & COMMERCIAL 66.00 DOWN, CUTTER & BONING UTILITY 51.50, CANNER & LOW CUTTER 44.00-49.00, SHELLS 39.00-43.00. SELECT 60.00.

BULLS YIELD GRADE NO. 1 57.00-59.50.

CALVES: 95 HOLSTEIN BULLS #1 90-110 LBS. 115.00-140.00, #2 70 LBS. 65.00. HOLSTEIN HEIFERS 100 LBS. 200.00.

HOGS: 65. B&G US NO. 1-2 240 LBS. 43.00. US NO. 1-3 270 LBS. 40.00-42.00, SOWS US No. 1-3 500 LBS. 32.00-37.00. BOARS 24.25.

FEEDER PIGS 20-35 lbs. 30.00-34.00, 50-85 lbs. 39.00.

GOATS 10.00-18.00 PER HEAD.

Jersey Shore Livestock Market, Inc.

Auction every Thursday at 4:00 p.m.

Jersey Shore, Pa.

Report supplied by Auction Thursday, May 12, 1994

RETURN TO FARM CALF 100.00-250.50.

GOOD VEAL: 70.00-99.00.

COMMON VEAL: 30.00-69.00.

SELECT STEERS: 64.00-67.00.

COMMON STEERS: 62.00-64.00.

COMMERCIAL COWS: 45.00-53.50.

CANNERS-CUTTERS: 38.00-47.00.

SHELLS: 35.00-37.00.

CHOICE HEIFERS: 65.00-67.25.

SELECT HEIFERS: 62.00-64.00.

COMMON HEIFERS: 57.00-61.00.

GOOD FEEDERS: 65.00-77.00.

COMMON FEEDERS: 40.00-64.00.

BULLS: 53.00-60.00.

GOOD HOGS: 37.00-38.25.



**FARMER BOY AG.**

410 E. LINCOLN AVE. MYERSTOWN, PA 17067

CALL TODAY 717-866-7565



Full Line Of Parts In Stock For Your Poultry And Hog Needs

Hours: M-F 7:00-5:00; Sat. 7:30-11:30

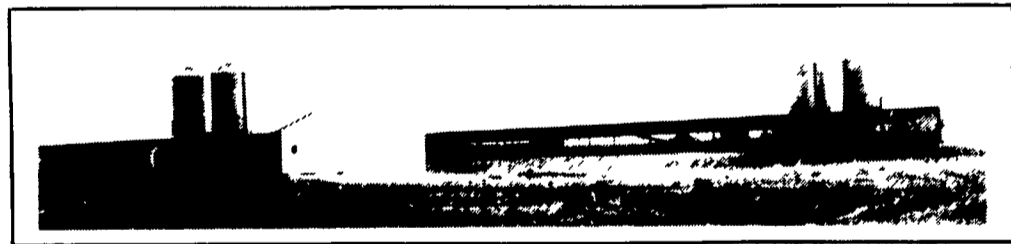
Check Out Warehouse Prices

WE SHIP UPS



5-7

**ADD INCOME TO YOUR FARM**  
**Poultry & Hog Contracts Available**



This 2-stage facility features a 50'x215' brooder building and a 50'x520' growout building.

FARMER BOY AG. Swine Stabling

L.B. WHITE Heating Systems

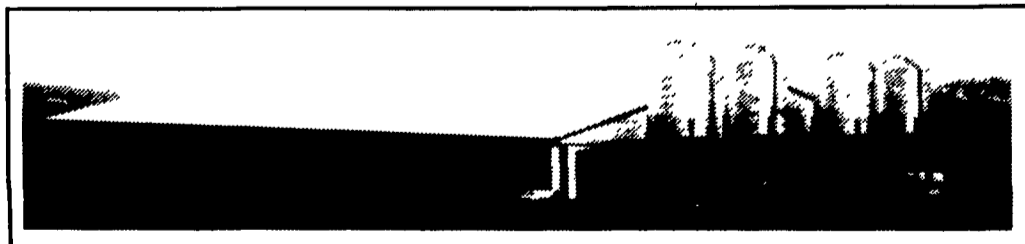
BOSS HOG Woven Wire Flooring



Stainless Steel Hog Feeders



AGRI-PLASTICS Swine Feeding & Confinement Equipment



This Hog Finishing Facility features 2 Rooms of 1,000 head each

**EXISTING PRODUCERS ARE EXPERIENCING THE FOLLOWING:**

- EXCELLENT SUPPORT SERVICE BY CONTRACT COMPANY
- EXCELLENT HEALTH & DISEASE PROGRAM SUPPORT

**CONTACT FARMER BOY AG...YOUR PROFESSIONAL COMPANY**

- CUSTOM DESIGN • NUTRIENT MANAGEMENT PLANNING
- ASSISTANCE IN PLANNING YOUR FINANCING
- SERVICING BUILDING PERMITS & INFORMATION REQUIREMENTS