

**35 TRUCKS & TRAILERS**



'78 LN 9000 Ford

335 Detroit 13 Sp. Trans w/Lime & Fert. Spreader and Air Slide Lime Trailer, Will Separate

717-733-7674

**OVER 90 TRUCKS**

**Bobby Gerhart's  
Truck World**

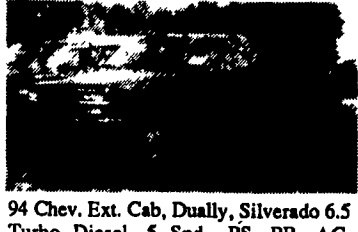
2480 E. Cumberland St.  
Rt. 422  
Lebanon, PA 17042  
717-273-7995

**USED TRUCKS**



90 Ford F-450 Super Duty 9 Ft. Stake Body Dump, 460 V8, 5 Spd., PS, PB, AM & FM Stereo, 44,000 Miles.

\$14,900



94 Chev. Ext. Cab, Dually, Silverado 6.5 Turbo Diesel, 5 Spd., PS, PB, AC, Cruise, Tilt, PW, PDL, Bucket Seats, Console, AM & FM Stereo Cass., 600 Miles.

\$29,600.00



88 Ford F-250 XLT Lariat 7.3 Diesel, Auto, PS, PB, AC, Cruise, Tilt Wheel, AM & FM Stereo, Dual Tank, Two Tone Brown & Tan, 57,000 Miles.

\$10,900.00



92 Chevrolet 2500 Scottsdale, 350 F.I., AT, AC, AM-FM, 8600 GVW, 24,000 Miles, Maroon

\$14,900.00

Financing Available

**MARTIN'S AUTO SALES**

1025 W. Main St., New Holland, PA 17557  
(717) 656-6621



**90 Chev C3500 Walk In Utility**  
454 Auto, A/C, Morrison Walk In Util. Silverado Silver #C173



**88 Chev 1-Ton 8' Box**  
350, 4-Spd, Radio, Red 66,000 Miles #C168



**92 GMC K2500 SC Diesel**  
6.2 Dies, Auto OD A/C 4x4, PW, PL, Cruise, Tilt, Sierra SLE, 32,000 Miles, Blue Two Tone G117



**88 Ford F350 Dually**  
351, Auto, A/C, XLT, PW, PL, CR, Tilt, Red/White #F216



**93 Ford F350 Crew Cab Dually**  
7.3 Int Dies., Stick, A/C, PW, PL, CR, Tilt, XLT, White, Brand New #F215



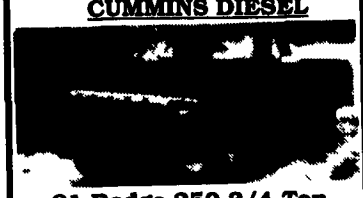
**1986 Chev. Conversion Van**  
High Top Load, Rear Air/Heater, Burg. Sil., Very Nice, 56,000 Miles #C166



**1987 Chev Dump Stake 12'**  
350 Auto, White, Good Condition, 32,757 Miles #C179



**91 Ford Aerostar Cargo AWD**  
4.0, Auto, A/C, AM/FM, Lt Blue, 4 to Choose From



**91 Dodge 250 3/4 Ton Cummins Turbo Diesel.**  
Auto, A/C, 37,900 Miles Blue/Gold Nice Truck #D117

Nicest Pre Owned Trucks Anywhere!

RTE. 422, WEST LEBANON, PA

(Across From Lebanon Valley Mall)



PHONE 717-274-2000

Business Hours Mon-Thurs. 9-9 Fri. & Sat. 9-4

**THIS IS JUST A SMALL PORTION OF OUR HUGE INVENTORY**



**Diesel Power 93 Ford F-350 Super Cab Dually**  
Only 6,800 Miles, 7.3 Auto Overdrive, Lots of Chrome, A Kneecut



**92 Ford F-250 Super Cab XLT** 480 I.L. 5 Sp., O/D, A/C, Dual Tanks, Limited Slip 4:10 Axle, Runs Fine \$16,900



**4x4 Super Cab Dually 93 Chevy 6.5 Turbo Diesel, Auto, A/C, Captain Chairs, Tow Pkg., 5 Yr., 100,000 Mile Engine Warranty, Only 28,000 Miles**



**14,000 GVW 92 GMC Chassis Cab, 6.5 Turbo Diesel, AT Overdrive, A/C, 28,000 Miles 84" C.A.**



**Super Cab 4x4 94 Chevy 6.5 Turbo Diesel, AT, O/D, A/C Silverado, All Options Tow Pkg., Class 3 Hitch, Only 400 Miles, New Truck Warranty**



**Diesel 1/2 Ton 4x4 92 Chevy 6.5 Turbo Diesel, AT, A/C, Trailer Tow Pkg., H.D. 8600 GVW, Runs Great**



**1/2 Ton 91 Ford F-250 300 c.i. Auto, H.D. 8600 GVW, 4:10 Axle, Factory Warranty, 23,500 Miles**



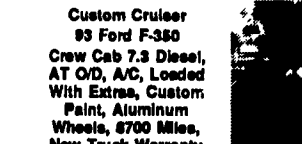
**Flatbed Dump 88 Chevy 30 12 Ft. Body, 380 I.L. AT, 40,000 Miles**



**Diesel 15 Passenger 94 Ford Club Wagon Only 4600 Miles, 7.3 Diesel, AT, O/D, Frt. & Rear A/C & Heat, Vinyl Seats**



**1/2 Ton 4x4 93 Ford F-250 381 I.L. AT, A/C, Heavy 8600 GVW, Trailer Tow Pkg., New Truck Warranty, Only 3,000 Miles**



**Custom Cruiser 93 Ford F-350 Crew Cab 7.3 Diesel, AT O/D, A/C, Loaded With Extras, Custom Paint, Aluminum Wheels, 8700 Miles, New Truck Warranty**



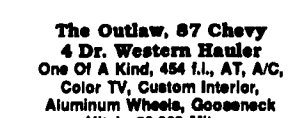
**Diesel Super Cab 4x4 4 Spd., Lockout Hubs \$5,500**



**Diesel Super Cab 4x4 88 GMC SLE Sierra 6.2 Diesel, AT, AC, 9000 GVW \$10,900**



**480 4x4, 92 Ford F-250 XLT, Strong, 480 I.L., AT, A/C, H.D. 8600 GVW, Runs Great**



**The Outlaw, 87 Chevy 4 Dr. Western Hauler One Of A Kind, 454 I.L., AT, A/C, Color TV, Custom Interior, Aluminum Wheels, Gooseneck Hitch, 62,000 Miles, You Will Like**



**4x4 Super Cab Dually 93 Dodge 1 Ton Cummins Turbo Diesel Intercooler, AT, A/C, Tow Pkg., 3.5 Axle, All New Truck Warranty Only 12,000 Miles**



**12 Ft. Flatbed 88 Ford F-350 Real Nice, 28,000 Miles, 480 I.L., 5 sp. O/D 11,000 GVW**



**Jerr-Dan Rollback 92 Ford F-250 Super Duty 22,100 Miles, 7.3 Diesel, 5 Sp, O/D, AC, 19 Ft. Body, Light Bar, Wheel Lift, Left & Right Side Controls, 15,000 GVW**



**1/2 Ton 88 Ford F-250 XLT Heavy Duty For Heavy Work, 480 Vs, Auto, A/C, 8600 GVW, Dual Tanks**



**Club Cab 4x4 90 Dodge 1/2 Ton V8, Auto, 7500 GYW, 57,000 Miles, It's Nice**