

32 MISCELLANEOUS

1300 foot of 6 foot chain link fence with 1 set of 14 foot gates, (1) set of 20 foot gates with 15 foot extensions with electric controls and opener (1) 14 foot gate, (1) 3 foot gate. Buyer to remove. \$3500. 717-932-9900

18" Rotary table, \$795; Cross slide table 6"x12", \$150 814-344-8447 after 4PM Cambria Co

1939 truck body made into tractor, Rabbit stable; old type ice box refrigerator, wringer washer; peach baskets, apple, potato boxes 610-944-8882

20HP 3-phase hydraulic unit w/controls, \$350; 5HP 3-phase hydraulic unit, \$250, 15HP phase converter \$750 908-453-2088

BEEKEEPING EQUIPMENT Extractor, tanks, wax press, hundreds of hive parts, nucs, etc 610/594-0824

Brake lathe, like new, with automatic cut-off, \$5,000 or best offer Ashley wood stove, \$75 Wood burning boiler, \$50 500 gallon gasoline tank with electric pump, \$200 (410)734-7070

Farm Toys-Collector Series, Show Tractors, Pedal Tractors, Trucks-for sale at all times Visit our large display during business hours Wengers Farm Machinery, Inc. 251 S Race St. Myerstown, PA 717/866-2130

FISHING TACKLE WANTED Old reels, wooden lures, rods, nets, advertisements 610-660-9995

For Sale Perflex EC-65 Pool Filter, Kreepy Krauly Pool Cleaner, Versa 185B Pool Heater, Like New (717)225-4442 York County

Tank, railroad car high pressure, \$1650 717/354-3105

WANTED Original floor, grainery boards, 2" flooring, barn beams, tobacco sheds, siding (717)229-2806 mobile 717/880-4549

WANTED Used tools and machinery Buy, Sell, Trade, Consign or Finder. BJ TOOL & SUPPLY, RT 422W, Myerstown, PA 1-800-772-9845

WANTED Year Round Source of Hardwood Logs, for Firewood Processing, 4" and Up (301)829-1812.

WANT Hickory trees or logs (717)733-9136.

Mahoning Outdoor Furnaces burn wood, coal, oil or gas, 100,000- 500,000 BTU. Heat your home, shop, barn, pool also domestic hot water. Two 200,000 units in stock. Call Charles Bowman, Lebanon Co., (717)865-3025

Milling Machine, horizontal Toolmaster w/power feed, \$3200 717/354-3105

Mobile home, Shultz, 14x65 three BD Rms, bath, appliances, included, good condition Must Move. Asking \$5000 OBO Northumberland Co. 717-286-9380; 717-286-8650.

New Concession trailer, skirting, everything new, \$5000; Ford truck '88, 17K, \$4100, Gas stove, green, clean, \$100, lawn tractor, Jacobson, \$350, golf cart, \$300, double apple peeler, excellent condition, \$800; Heatrolla stove wood/coal, \$100, Incubator, good condition, \$50 717-838-4017 after 6PM

PA Mountain Stone, acres to choose from, you haul, 1c/lb 717/546-9317

Phase Converter, 40hp, like new, \$1250 717/354-3105.

Signode Banding Machine, auto 1/2" steel, \$3250. 717/354-3105

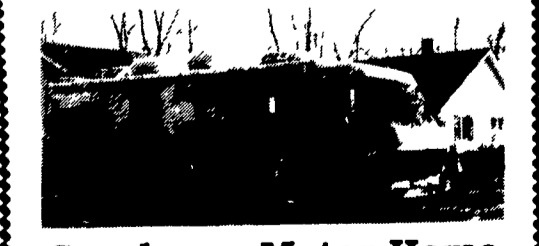
TIRONIE'S TARPS
717/584-2928
1/800/874-2928

COTTAGE TOILETS "SUN-MAR"
The World Leader in COMPOSTING TOILETS
NO Septic System NO Chemicals
Save the Environment! Recycle Back to Nature!

Free 8 Page Colour Brochure
Several models available for the non-electric NE
ECO-TECH
1 Hanover St. Gettysburg, PA 17325
717-337-9325

LIVE GAME FISH Fingerlings and Adults, Large and Small Mouth Bass, Spotted and Rock Bass, Bream Crappies, Trout, Channel Cats, Bullheads, Walleyes, Perci, Minnows, Northern, Pickerel, Muskies, Red Gills, Mulletts, Carp, Eels, Turtles, Frogs, Israeli Carp, Also Aquatic Plants and Water Lilies. COLORFUL CATALOG \$2.00.
Truck, Air and Parcel Post Delivery.
ZETTS FISH HATCHERIES
DRIFTING, PENNA. 16834
Phone: 814-345-5357

33 RECREATIONAL VEHICLES



Coachman Motor Home
30' Dual Air, Microwave, Generator, Awning, Good Condition
Asking \$9,500
610-942-2591
610-942-2271

33 RECREATIONAL VEHICLES

1973 Terry 18' self-contained camper trailer, \$1,500. (301)898-7426.

34 AUTOS

1939 LaSalle V8 engine, needs restoration. Best offer 609-894-2849.

1990 GMC Safari conversion mini van, loaded, best offer over \$9,500. (610)285-2611

'84 Plymouth Horizon, 4 cyl., automatic, PS, PB, runs good, new tires, new brakes. 717-922-4294.

35 TRUCKS & TRAILERS

1930 Ford Coupe off frame, restoration 75% complete, \$7000 OBO. Will take trade Lancaster Co 717-397-1186 after 5PM.

1951 Mack A model, 20 series, 1 1/2 ton, runs good. 410-357-5806

1960 Ford 1-ton flatbed, dual wheels, V-8, 4 speed, good shape, needs little work, \$900. 717/566-3235 ask for Larry.

1990 Aluminum Featherlite Gooseneck Cattle Trailer, Excellent Condition, \$10,000 (717)263-0416.

1990 Ford Turbo Diesel, 4x4, extended cab, auto/air, trailer package, loaded, A-1 condition, \$13,900-also available w/11 1/2' Coachman pickup camper. 717/687-0626.

20' wood cattle body, good condition, make offer; pickup power angle snow plow, \$900. 717-867-5633.

24' Custom Made Aluminum Flatbed (717)259-7823

68 Ford 600 Truck w/14' Dump Motor, Runs, Truck Rough \$500; 1989 24' Morgan Body Hi-Top w/Lift Gate, Excellent \$2500. (215)562-0826 Evenings.

69 Ford 950 cabover, 34,000 GVW, air brakes, new rubber, w/Stoltzfus lime spreader, \$2800 717/742-2712.

'73 Mack Tandem w/Wetline, 237 Engine w/Recent Engine Overhaul, \$5900, MGS tandem trailer, 8x16, like new, \$1200 (609)935-0348.

'86 Chevy Scottsdale C10, 5 passenger Suburban, 350 auto, PB, PS, cruise, tilt, air, AM-FM cassette stereo, 62,000 miles, local 1 owner, excellent condition, \$7,800. 717-733-2873

'88 Ford XLT E150, 7 passenger, 351 EFI, auto, PB, PS, PW, PDL, cruise, tilt, dual air, AM-FM cassette stereo, privacy glass, towing package, 2 tone blue, 32,000 local 1 owner miles, like new. 717-733-2873

'90 Dodge D250, 1/2 ton club cab, 318 EFI, auto, PB, PS, AM-FM, 7,400 GVW, 36,000 miles, new radials, silver & white, excellent condition, \$11,900 717-733-2873

'90 Dodge LE 250, 8 passenger van, 318 auto, PB, PS, PW, PDL, cruise, tilt, dual air & heat, privacy glass, 21,000 original miles, like new, \$13,995 717-733-2873

'90 Ford F250 XLT Lariat, 7.3 liter diesel, auto, PS, PB, PW, PDL, cruise, tilt, air, AM-FM cassette, new radials, 43,000 miles, brown & white, 1 owner, excellent condition, \$13,900 717-733-2873

'90 Ford XL F150, 300 6 cyl EFI, 5 spd, PS, PB, AM-FM cassette, dual tanks, Rally Whis, 45,000 1 owner miles, black, \$8,300. 717-733-2873

1974 GMC 5 yard dump single axle, 5+2 speed, \$5100 OBO; 1979 Chevy 5 yard dump, single axle, 5+2 speed, \$7400 OBO; 1970 Int. truck/tractor, single axle, 5+2 speed, \$1200 OBO. 215-699-3928.

1974 KW, New Engine, 25' Alum Dump Trailer, Also 1982 U Model Mack 25' Alum Dump Trailer, \$10,000/Unit (215)794-7309

1978 Autocar, tandem axle, Cummins power, long frame, new 17 yard dump and hoist, air and hyd. to rear for low-boy. Excellent condition, \$14,500. 215-598-3768.

1978 FORD F-600 Dump 53000 mi \$3500/OB; 1977 INT Dump 404 V8 5&2 \$3900; (609)466-2953.

1978 R-model Mack tractor, 300 5-speed; 1979, Freuhauf aluminum dump trailer, 28' tub bottom; 1988 Freightliner, 10 wheel, steel, 14' body, 9-speed; Roadranger 44,000# rears. Phone 410-457-4634.

1979 Dodge 300, 318 Automatic Dual Wheels w/ Dump and 6 Ton Hoist Dump Truck, Needs Work, Must Sell Would Make Good Farm Truck. \$1700 OBO (717)299-4592

1979 R Model Tandem Axle Mack Tractor, 300 Engine, 60 Transmission, 11R24 5 Rubber w/ Wetline \$7500 (215)383-7042

1982 Shoop gooseneck 2-horse thoroughbred size trailer. Extra wide, new floor, \$1,200 OBO. (717)456-7202.

1984 Int. Eagle cabover, 400 Cummins, Jake brake, 13,000 mi. on overhaul, clean truck, \$15,000 OBO. 410/836-7924.

1984 Mitsubishi pickup, air, radio, tape, bedliner, 67K, \$2795 OBO. Lancaster Co. 717-397-1186 after 5PM Will take trade

1984 S model Int., 466 engine, long wheel base, air brake, \$7500; 1980 Mack U Model Tandem, 300 PS. \$4500; Also 300 Mack Engine and 290 Cummins Engine (610)944-9871.

1986 Iveco turbo, diesel, automatic, 16' stake body, 43,000 original miles, GVW 11,600, \$5,500 OBO DelawareCo (610)485-3584.

1986 Jeep CJ7 Laredo package, air, \$5995 OBO. Lancaster Co 717-397-1186 after 5PM Will talk trade

1986 tandem axle Mack dump truck; 1976 Ford fuel truck, 3000 gal. aluminum tank; 1978 White cabover tandem axle tractor, Cummins diesel; detachable low boy Smitco non-ground bearing. 717-463-3701.

1987 Chevy P30 step van, 6.2 diesel, automatic, P/S, P/B, w/aluminum Grumman body, 40,000 original miles. \$5,195 (908)735-5532.

1987 F350 Ford Diesel dually w/1992 8x22 Eby gooseneck livestock trailer. Will separate. 717/374-2766.

Thermo-King STB-II street boss reefer unit, excellent cond., \$800. Lackawanna County. (717)586-9503.

1988 Nomad 33' travel trailer, loaded, \$9000 OBO Will take trade. Lancaster Co 717-397-1186 after 5PM

'92 Chevy Silverado 3500, dual whl. ext cab, 454 auto, PB, PS, PW, PDL, cruise, tilt, air, AM-FM cassette, towing package, 12,000 miles w/balance of factory warranty, like new. 717-733-2873

'93 Chevy Beauville, 6.2 liter diesel, 8 passenger, auto, PB, PS, PW, PDL, cruise, tilt, dual air & heat, privacy glass, 27,000 miles, blue, excellent condition, \$17,900. 717-733-2873

'93 Ford Club Wagon E350, 15 passenger, 351 EFI, auto, PB, PS, PW, PDL, cruise, tilt, dual air & heat, privacy glass, 27,000 miles, blue, excellent condition, \$17,900. 717-733-2873

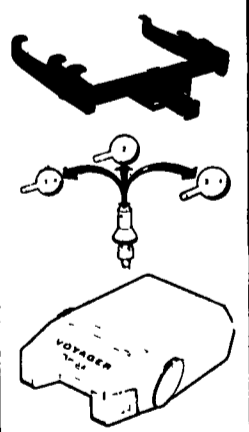
Aluminum Gooseneck Stock Trailer, 22'x8', tie bar, excellent condition. Penn Del Farm 717/786-3526

WANT: Dodge diesel, 4x4 pickup, 250 or 350 (814)749-8489.

Welding Truck- 71 International w/Miller 55 trail blazer welder, Airco Mig, Air arc, torches, air compressor and supplies, Utility body truck, \$11,500 OBO. (610)346-6711.

12 Ton Low Boy w/Hydraulic winch, lowest height 9", raises up to 50" high for loading dock use \$3,000
Call for more details
(717) 225-3798
(717) 873-0529

For Sale 1968 Int. farm truck, 1800 Loadstar diesel, no inspection, engine and trans. okay. Make offer!
15,000 gallon oil tank. Can stand on end. \$300
Call Martin's Country Market
(215) 286-5045

TRAILER HITCHES
Quality & Price

★ Free Catalog
★ MC/Visa/Disc
★ UPS Shipping
Weaver Distributing
1-800-Weaver-D
1-800-932-8373
Fax 717-965-2887

WALKER TRUCK SALES
Somerset County
'93 Dodge 250 3/4 ton extended cab, 4WD, 360 motor, auto, air, power windows and door locks, 3000 miles . . . \$16,000
'90 Ford F350 4-door, crew cab, dually, 460 5-speed, air, 52,000 miles . . . \$12,000
814/893-5589

C-65 Chevy Truck, 16' WB 366-5 Spd, Runs Good. \$1500. GMC-6000, 18', WB, Doesn't Run \$500. (717)762-7940

Cheap DEPENDABLE HAULING, 1961 Mack B-60 tandem tractor, 70,000 GVW, good condition, 1972 trailmobile 900 cu ft., dry bulk tanker, good condition, \$4000/ea or both for \$7000. 610-944-0811

MOTORS
New & Rebuilt
350, 366,
427, 454
6.2 Diesels
Rebuilt & Used
Will Install
Roll Back Service
(at cost)
717-762-6415

KEYSTONE TARPS
Is A Manufacturer Of Custom Tarps
• Truck Tarps • Cargo Straps
• Tarp Straps • Gloves
• Custom Covers • Used Railroad Ties
• Storage Covers • Boat Covers


Service and Sales
R.D. #1, Box 329A Stugart
Cogan Station, PA 17728 (717) 435-0752


TRUCKCRAFT

PICKUP INSERT DUMPER
For FREE brochure, call toll free 24 hr.
1-800-755-3867

12 Ton Backhoe Pro Special

18 Ft. Flat + 5 Ft. Beavertail & Ramps
\$5,284
Hostetler Truck Bodies & Trailers
Rt. 322 Millroy, PA 17063
(717) 667-3921


1986 IVECO Z120 with 14' Flat Bed, 6 Cylinder Diesel, Automatic, 11,600 GVW.
\$4,950.00
Curry Supply Co.
Curryville, PA 16631
Call 1-800-345-2829


1968 MACK DM607S
Tandem Cab & Chassis, 237 Mack, 5x3 Trans, Double Frame, 18F-44R, 134" Cab to Center of Tandems
\$8,500
Call 1-800-345-2829
Curry Supply Co.
Curryville, Pa.