

**Public Auction Register**

Closing Date Monday 5:00 P.M.  
of each week's publication

FRI. OCT 28 - 1:30PM, State Graded Feeder Pig Sale. Located At Carlisle Livestock Market, Inc. Exit 12 South Off I-81 Left Onto Alexander Spring Road. (717) 249-4511.

**NOVEMBER**

FRI. NOV. 4 - 7PM, Horse Sale. Located New Holland Sales Stables Inc, 101 W. Fulton St., New Holland,

Pa. Norman Or David Kolb, Aucts.

FRI NOV. 11 - 1:30PM, State Graded Feeder Pig Sale. Located At Carlisle Livestock Market, Inc. Exit 12 South Off I-81. Left Onto Alexander Spring Road (717) 249-4511

SAT, NOV. 19 - 10AM, Mel's Stable Selected Con-

signment Horse Sale. Located At 834 Wallace Rd., New Holland, Pa. From Rt. 23 in New Holland, Go South On Brimmer Ave. Go 2 Miles South On New Holland Road To Hill Rd. Turn Left On Hill Rd Proceed 1.2 Miles To Sale On The Left From Rt. 340 East Of Intercourse Take New Holland Rt. 2.5 Miles to Hill Rd., Right On Hill Rd. to Sale On Left Mel Hoover, Auctioneer.

FRI. NOV. 25 - 1:30PM, State Graded Feeder Pig Sale. Located At Carlisle Livestock Market, Inc. Exit 12 South Off I-81. Left Onto Alexander Spring Road. (717) 249-4511.

FRI. NOV. 25 - 7PM, Special Feeder. Located New Holland Sales Stables Inc, 101 W. Fulton St., New Holland, Pa. Norman Or David Kolb, Aucts.

**DECEMBER**

SAT., DEC. 3 - 10AM, Mel's Stable Selected Consignment Horse Sale. Located At 834 Wallace Rd., New Holland, Pa. From Rt. 23 in New Holland, Go South On Brimmer Ave. Go 2 Miles South On New Holland Road To Hill Rd. Turn Left On Hill Rd. Proceed 1.2 Miles To Sale On The Left. From Rt. 340 East Of Intercourse Take New Holland Rt. 2.5 Miles to Hill Rd., Right On Hill Rd. to Sale On Left. Mel Hoover, Auctioneer.

FRI. DEC. 9 - 1:30PM, State Graded Feeder Pig Sale. Located At Carlisle Livestock Market, Inc. Exit 12 South Off I-81. Left Onto Alexander Spring Road. (717) 249-4511.

SAT. DEC. 10 1PM Arnold

Hog Production sale, Lebanon Area Fairgrounds, Lebanon, Pa. Harry H. Bachman, aucts.

FRI. DEC. 23 - 1:30PM, (Due To Christmas). State

Graded Feeder Pig Sale. Located At Carlisle Livestock Market, Inc. Exit 12 South Off I-81. Left Onto Alexander Spring Road. (717) 249-4511.

**SALE EVERY TUESDAY**

Graded Sale  
1st Tuesday each month  
2 P.M.  
Horse Auction  
2nd Saturday each month  
1 P.M.



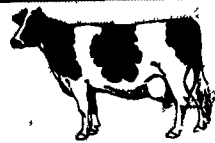
Marshall, Va.  
703-364-1566

**DEALER IN ALL KINDS OF LIVESTOCK**  
Also Crippled & Down Cattle

**MARLIN S. IRWIN**  
Quarryville, PA  
PH: 717-786-3016

**Dairy and Livestock Sales**

**NEW HOLLAND SALES STABLES, INC.**



New Holland, Pa.  
Located 12 Miles East of Lancaster, just off Rt. 23

**WEDNESDAY, MAY 11, 1994**  
**OPEN & BRED HEIFERS** 11:00 A.M.  
**FRESH COWS & SPRINGERS** 12:00 NOON

USUAL RUN OF OPEN AND BRED HEIFERS FROM LOCAL DAIRYMEN.  
MARVIN ESHLEMAN CONSIGNING A LOAD OF REGISTERED AND GRADES FRESH COWS AND SPRINGERS.  
LOCAL FRESH HEIFERS

**3 HERD DISPERSALS**

**HERD #1 DON LOTT FROM SUSSEX CO. NEW JERSEY**  
45 COWS — 22 RED AND WHITES — 23 BLACK & WHITE HOLSTEINS, 6 REG. Good clean herd of cows all AI Sired. (2) Red & Whites, registered in the Red & White Assoc. 15 recently fresh - 2 due soon - 8 July and Aug. - 22 bred for fall. Low SCC under 200,000 for past year. Cows not on test average near 55 lbs. in the tank. Red and Whites Sires represented include Kid-Alen, Promotion Red, Jon-Red, Maximum Red, Valiant Star, Sunset Kid Red, Rooster Red and Royal Rascal.

**HERD #2 38 Cows From VA** in all stages of lactation - loose housing milked in stanchion barn. Well bred cows average near 60 lbs. A.I. sired.

Represented by **LEROY SMUCKER**

**HERD #3 William Weaver Franklin Co.** 26 mature cows - 6 fresh - 6 springing, balance due for fall production. Red & White Service Age bull. Cows milked in tie stall barn. Young animals avg. over 50 lbs.

Represented by **MARVIN ESHLEMAN**

Sale Managed By

**New Holland Sales Stables, Inc.**  
Barn 717-354-4341 Fax 355-0706  
Norman & David Kolb, Mgrs. 61L  
717-397-5538

**SHORT NOTICE**

**DAIRY HERD DISPERSAL**  
**Wednesday Evening, May 11, 1994**  
7:00 P.M.

Selling at Art Kling's Sale Barn - Located 15 miles North of Carlisle on Route 74 - 2 miles Northeast of Landsburg.  
Due to other Business Interests - Bill McCulloch had decided to sell his complete milking herd, consisting of 44 Holstein Cows.

This is a good young Parlor - Freestall Dairy - Over 1/2 the Herd is Milking with First Calf. Balance are Second Calvers with only a few older cows. Bill has culled heavy - only the Good ones Sell in this Auction. 20 Head have been Fresh since January and a nice Group of Fall cows also Sell.

Low Somatic Cell Count - 4% Butterfat Test - 50 lbs. average per cow in the tank, with Homegrown Feed.

Also Selling: DeLaval 2500 gal. Bulk Tank and Surge Double Six Herringbone Parlor.

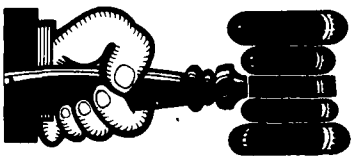
**WILLIAM AND LINDA McCULLOCH**  
260 McCulloch Road, Shippensburg, PA  
Phone: 532-8848 (Bill) 532-5508 (Travis)

Also selling For Art Kling:  
20 Head of recently Fresh and Close Springing cows and First Calf Heifers. Usual Top Quality Cattle - Registered and Grades.  
And a few other Consignments.

Sale Managed By:



**Kling's Auctions, Inc.**  
R.D. 1, Box 66  
Landsburg, PA 17040  
PA License #0500  
717-789-3883



**AUCTIONEER'S DIRECTORY**

**NOTICE**

To assure that your Public Sale appears in the Public Sale Section we must have your advertisement by 5 P.M. Tuesday of each week's publication.

**C.W. SHIRK**  
Licensed & Bonded  
Professional Auction Service

- Dairy Dispersals
- Real Estate
- Farm Equip. & HH Goods

Ephrata, PA  
717-656-8793



**John D. Stauffer**

**Auctioneers**

1484 Mountain Road, Manheim, PA 17545

Fulltime Courteous Professional Auction Service Since 1976

Real Estate • Farm Equipment • Antiques  
Personal Property • Livestock  
Phone 717-665-5099



**KREIDER, KLINE & GOOD**

**AUCTIONEERS**

COMPLETE PROFESSIONAL AUCTION SERVICE  
**REAL ESTATE - FARMS & RESIDENTIAL PERSONAL PROPERTY - ANTIQUES - FARM STOCK SALES - LIQUIDATIONS**  
RANDAL V. KLINE LLOYD H. KREIDER  
AUCTIONEER-REALTOR AUCTIONEER  
717-733-1006 717-786-3394

ROY E. GOOD, JR.  
AUCTIONEER  
215-445-4309

**ROGERS COMMUNITY AUCTION INC.**

**PLEASE NOTE NEW SALE TIMES!**

Located 8 Miles East Of Lisbon, Ohio Or One Mile West Of Rogers, Ohio On St. Rt. 154.

**FRIDAYS**

Produce, Egg, Miscellaneous Auction Starts At 6 P.M.

Poultry Auctions Start At 6 P.M.

Doors Open At 7:30 A.M.

To Accept Consignments

Open Air Market All

Day And Evening

Doors Open At 7:30 A.M. To Rent Market Spaces. Over 2.5 Miles Of Outside Concessionaries And 30,000 Sq. Ft. Under Roof.



**WEDNESDAYS**

Farm Machinery Consignment Auction



The 1ST WEDNESDAY EVENING OF EACH MONTH at 3 P.M. sharp.

We are open the preceding Tuesday of each sale day to check in consignments from 8 A.M. to 8 P.M. Handling farm machinery, lawn and garden equipment, tools, fire wood, cut lumber and related miscellaneous items. Five auctioneers operating simultaneously.

Hay And Straw Grain

EVERY WEDNESDAY selling truck

load lots by the bale or ton starting at 1 P.M.

Barn Opens at 8 A.M. to Consign

Jim and Ken Baer

Auctioneers and Managers

Phone (216) 227-3233 or (216) 227-3236

"Sales Every Week Since 1955"

**HFA HORNING**

Farm Agency, Inc.

Courteous Real Estate Services  
Professional Auctioneers  
State Certified Appraisers  
Specializing in Farms and Land  
Alvin Horning, Broker  
Route 23, Morgantown, PA  
(610) 286-5183

**MARTIN AUCTION SERVICE**

Aaron E. Martin Richard L. Stauffer  
(717) 738-4168 (717) 738-0296

Real Estate • Farm Equipment • Antiques •

Household Goods

It doesn't cost to use our Auction

Service...It Pays.

CALL TODAY!!

**ACTION AUCTION CO.**

Farm Equip., Dairy Dispersal  
Real Estate, Business Liquidations  
Household Goods,  
Construction Equip.

Certified Personal Property Appraisals  
Member: Certified Appraisers Guild of America

(215) 873-4051 Home  
(215) 873-0901 Office

Auctioneer:  
Steve Petersheim:  
Steve Jr.



**COMPLETE AUCTION SERVICE**

Antiques  
Household Goods  
Farm Equipment  
Real Estate

215-593-2828