

# Sale Reports

## WEAVER ESTATE SALE

A Public Auction of real estate was held April 30 for the estate of Amanda Weaver, south of Newmanstown on Stricklerstown Road, Lebanon Co., Pa.

The large 2½ story house, and garage on a corner was sold for \$60,000.

Some other prices were: roll-top desk \$2800, settee \$950 and buffet \$350.

Dwight D. Miller was the auctioneer.

## HOOVER SALE

A Public Sale of personal property was held April 23 by Noah Hoover, 855 S. Custer Ave., New Holland, Lanc. Co., Pa.

Some items sold were: J.D. B tractors \$1750 & \$1550, J.D. A tractor \$900, crock \$85, sizing box \$70, oak bed \$290, old dresser w/ mirror \$475, 1902 silver dollar \$70 and 220 Swift gun \$375.

Mel Hoover was the auctioneer.

## FISHER SALE

A Public Auction of a quilt shop dispersal was held April 30, ¼ mile west of Intercourse, Lanc. Co., Pa. along Rt. 340.

Some of the 150

quilts sold were: Lancaster Rose \$425, Country Bride \$475 and \$500, Diamond Star

\$550, Country Love \$600 and \$675, Country Song Bird \$485, Trail of Stars \$585 and White Pineapple \$810.

Steve and Steve Jr. Petersheim were the auctioneers.

## 19th Annual Consignment Sale For Cumberland Valley Amish Shoos

Saturday, May 14, 1994  
9:00 a.m.

Held at Jacob Flaud farm, 2 miles west of Newburg, PA on 641, turn left onto Mowersville Road, short distance onto Burnt Mill Road, Go 1 mile to sale (watch for signs).

Quilts Will Be Sold At 12:30 p.m.

Trip Around The World, Appliqued Sampler, State Bird & Flower, Country Bouquet, Appliqued Bridals Heart, Irish Chain, Double Wedding Ring, Broken Star/Log Cabin, Slice of Pineapple, & Many More!

Country Love Wallhanging • Painted Cheese Boxes & Bushel Baskets With Lids • Stuck Horses • Rugs • Wreaths  
• Rag Dolls • Lots More Locally Handcrafted Items.

### ALSO AVAILABLE:

Shrubbery, Lawn Furniture, Oak Furniture & Woodcrafts, New Benches, New Tools

New buggy harness and tack, Clark with fruit, Wagon load of miscellaneous: corns, baseball cards, cast iron banks, hunting knives, Planter peanut jars, market baskets, Walnut and Cherry lumber, Antique flour cupboard, Maytag wringer washers & lots more.

Bring Your Chairs And Spend The Day  
Lots Of Good Food: Barbecue Chicken, Baked Goods, Homemade Donuts & Soft Pretzels

ALL CONSIGNMENTS APPRECIATED  
BEFORE SALE DAY. Lunch Stand  
Not Responsible For Accidents

AUCTIONEERS:  
Steve Petersheim (AU001349L)  
& Others

## ANTIQUA AUCTION

FORTNA'S ANNVILLE AUCTION GALLERY

18 E. Main Street, Annville, PA 17003

SAT., MAY 21, 1994

At 9:00 A.M.

Preview - Friday, May 20,  
From 4:00 to 7:00 P.M.

Merchandise from Lebanon & Annville Estates

Fine Centennial Chippendale dining table with carved acanthus pedestals and gadroon border top, Chippendale server, 6 Chippendale dining chairs, breakfront, Hepplewhite inlaid triple dresser, late Victorian chair and sofa, Pr. Victorian side chairs, Palace size oriental rug 19'x16', fine central medallion oriental rug (all from Lebanon mansion), fine 3 door glass front oak book case, plantation desk, oak rockers, chairs, mirrors, plank seat settee, wooden butter chum, washstand, oak tables, fine splint basket, Annville photos, handpainted china, very fine large set of Haviland china, ironstone china, brass bucket, Cambridge glass, Hawks cut glass bowl, Rudolstadt vase, Rookwood vase, Roseville bowl, Approx. 45 pcs. Carnival glass, lots of pattern glass, oil lamps, flint Huber celery, Westmorland, colored glass vases, sandwich candlestick, wooden kitchen items, Rockingham cake molds, cookie cutters, wicker potty chair, Jardinere & stand, pr. of important bronzes "Joli Chat", Par Franz Iffland, printed birth records, sterling silver candle sticks, Compote, nice silver tea service, goblets, 2 early bicycles. Lots of interesting, good quality smalls for 5 hours of selling.

Jewelry: Ladies 1 ct. diamond ring, SI, H Color; pair 14K yellow gold Turquoise earrings, 2 20 PT diamond earrings, ruby ring, garnet & opal ring.

TERMS: Cash or PA Check, out of State Checks with prior approval/letter of credit, Visa or MasterCard. ALL SALES ARE FINAL. No Buyer Premiums.

Kenneth R. Fegan, Auction Manager



18 E. Main Street, Annville, PA 17003 • Phone 717-867-4451  
Michael R. Fortna CAI Auctioneer Lic. No. 001711-J

## PUBLIC SALE SATURDAY, MAY 14,

10 A.M. Sharp  
123 W. York St., Dillsburg, Pa.  
Sign Posted  
REAL ESTATE - CAR - STAMPS  
1 P.M.

Home w/6 rooms, 3 baths, finished basement w/small workshop, garage & storage shed, situated on shaped lot, new roof, carpeting & drapes, cathedral ceiling in living room, formal dining room, home in excellent state of repair & paint. Must be seen to be appreciated.

To inspect real estate phone 766-0387 or eve. & weekends 432-5039 for appointment. Note: Property will be offered if not sold prior to sale; 1954 Rolls Royce, Parkward salon WSG 37 excellent condition; Collection of stamps from 1860 U.S. Commemorative stamps 1893 to 1963; singles; mint blocks; exhibition sheets; plate blocks; first day covers; U.S. historical regular issue 1860's to 1939; air mail; postage due; album world stamps; plus many others; Full line household goods in excellent shape; fine china; Antiques; Appliances; Wheel Horse riding mower 8 HP OK; Roto-tiller OK; Wheelbarrow other tools.

Note only a partial listing lots more of everything. Good sale.

TERMS: Cash, Traveler or approved checks.

Owners

DAVID & PATSY KARNS

Auctioneers George Haar

Lic. AU-377-L

Ray Lecrone Lic. AU-533-L

Phone Dillsburg 432-3815

ROLLING ON...IN THE 90's



MEETS THE CHALLENGE

For Built In Strength Where

It Counts - Buy



## Brillion DEEP TILLS

penetrate the soil as deep as 18 inches to break up plow sole and hardpan.

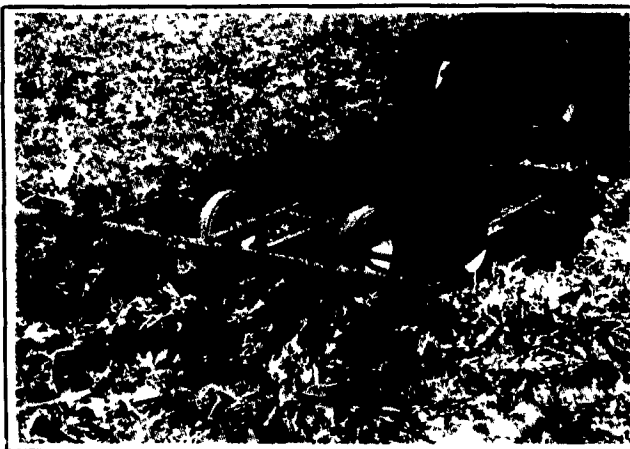


Moisture from snow and rain is absorbed deep into the soil. Topsoil is left rough and a certain amount of residue remains to combat wind and erosion. Deep Tills are available in widths of 7'6" to 27'6" with optional coulters for cutting residue.

Find out more about the value of deep tilling...stop in and we'll talk.

## Brillion SOIL BUILDERS

5 to 13 Shank



Soil Builders (Coulter-Chisel). Coulter gangs can be hydraulically controlled to save maintenance dollars. A number of different points available.

### PENNSYLVANIA

- ADAMSTOWN  
Adamstown Equip. Inc.
- ALLENTOWN  
Lehigh Ag Equipment
- ALTOONA & CRESSON  
Hines Equipment Co.
- BECHTELSVILLE  
Miller Equip. Co.
- BERWICK  
C.H. Rinehimer & Sons
- CARLISLE  
Gutshall's, Inc.
- DOVER  
George N. Gross, Inc.
- EASTON  
George V. Selpie
- ELIZABETHTOWN  
Messick Farm Equipment Co.
- INTERCOURSE  
C.B. Hooper & Son
- GREENCASTLE  
Meyers Implement
- LANCASTER  
Landis Brothers, Inc.
- LEBANON  
Umberger's of Fontana
- LOYSVILLE  
Gutshall's, Inc.
- LYNNPORT  
Kermit K. Kistler, Inc.
- MAXATAWNY  
N.H. Flicker & Sons, Inc.
- NEEDMORE  
Clugston Farm Equipment
- NEW HOLLAND  
A.B.C. Groff, Inc.
- OAKLAND MILLS  
Peoples Sales & Service
- OLEY  
Pikeville Equipment, Inc.
- QUARRYVILLE  
Grumelli Farm Service
- TAMAQUA  
Charles Snyder, Inc.
- WATSONTOWN  
Deerfield Ag & Turf Center, Inc.
- WEST GROVE  
S.G. Lewis & Son, Inc.

### MARYLAND

FREDERICK  
Ceresville Ford New Holland

### NEW JERSEY

- BRIDGETON  
Leslie Fogg
- ELMER  
Pole Tavern Equip. Sales Corp
- COLUMBUS  
Reed Brothers Equipment
- FAIRFIELD  
Caldwell Tractor & Equipment

ROLLING ON...IN THE 90's



MEETS THE CHALLENGE

## PUBLIC AUCTION

of HOLSTEIN COWS, FARM MACHINERY & EQUIPMENT, FEED, SILOS

SATURDAY, MAY 14, 1994

10:00 A.M.

Located midway between Terra Alta and Cranesville, WV., at the George Ringer Farm. From Terra Alta take the Terra Alta/Cranesville Rd. 4 miles north to the White Oak Church turn west at Ringer Dairy sign to farmstead. Watch for signs.

50 plus Holstein cows, records over 20,000 lbs. Some milking 100 lbs/day, Registered & Grade, DHIA records, Inter-State health papers.

**MACHINERY:** J.D. 4030 Tractor 18.4x38 tires HiLo Powershift, Ford TW10 w/cab 20.8x38 tires HiLo, J.D. 8250 grain drill 18 disc dry fert. grass seed, J.D. 7000 6r Conservation Corn Planter dry fert. insect monitor, 2 gravity wagons, gravity box, J.D. roller harrow, 110 disc, A.C. 2000 6 bot. semi-mount plows J.D. 5 bot. 16" mount plows, J.D. 4 bot. 16" semi-mount plows, J.D. 4 bot. 16" mounted plows, N.H. 411 Discbine, N.H. 144 Swath inverter, N.H. 315 hay baler w/thrower, N.H. 851 round hay baler, 4 flatbed wagons, 1 wagon w/metal hay racks, N.H. 782 For. Harv. w/2r nar. corn hd. grass pickup, N.H. 975 combine w/13' grain hd. 3 row corn, grain buggy w/auger, Kuhn hay tedder, SnoCo grain cleaner, Pequea feeder wagon, N.H. #8 for. wagon, J.D. 126 for. wagon, Badger for. wagon, Badger #8 snow thrower, #270 Gilmore grain dryer 250 bu., N.H. #28 for. blower, New Leader Lime Sprdr. mounted on GMC 6000 chassis, Weaverline 323 elect. feed cart, J.D. Hyd side dresser, 6" hyd. Auger 16", 3", 4", 6" augers 10', 16' 24', Cardinal 48' 6" auger on wheels, Knight 350 man. sprdr. mounted on Chev. C60 Chassis, N.H. flail man. sprdr., Hawkbuilt 207 Man. Sprdr., Ford post auger 12" Filson squeeze chute w/auto hd. lock, Hoof trimming table, 50 T. Toledo scales w/conc. deck, 3 corrugated fiber glass tanks 12' dia., 30T. & 15T Corrugated metal feed bins.

Kenworth Cab over tractor w/wet line 300 Cummins 13sp. (farm use), Lowboy trailer. 2 20'x60" Fickes conc. stave silos, 2 Badger Ring drive silo unloaders, Badger automatic feeder w/100' distributor & shuttle feeder

**FEED:** 600 T corn silage, 200 T. grass silage, approx. 1000 bales hay, 500 bales straw.

**AUCTIONEERS NOTE:** No small items to sell, be on time. Cows selling first, followed by machinery, feed & Silos.

**TERMS:** Cash day of sale. Check w/bank letter of credit addressed to auctioneer.

OWNER

George Ringer  
Terra Alta, WV

### AUCTIONEERS

Custers Auction Service

Deer Park, MD 21550

Robert G. Custer WV288-94 301-334-3141

Leonard Custer WV755-94 301-387-6712

Clark Yoder, WV Lic. Pending 814-662-2901

Oren C. Bender, Pedigrees 301-746-8340