

(Continued from Page A32)

Ken & Marilyn Umbie					
Scotti	H	4-5	25,344	958	854
Spring Aqua Farm					
226	H	4-8	25,990	747	804
Swan Best Farm					
35	H	4-4	27,862	1010	869
Merle J. King					
Lil	H	5-3	25,000	947	855

Lucky	H	4-9	28,798	1044	874
Dunwood Farm					
Delight	H	4-3	23,087	1037	844
Logic	H	3-7	25,858	890	867
Chris & Chester Stoltzfus					
Lucille	H	5-4	29,074	899	861
Walmore Inc #3					
598	H	3-10	30,405	1146	901
Richard Hoover					
105	H	5-0	25,772	884	831

Century Oak Farm					
Amy	H	7-6	26,407	906	858
Melwood Farm					
Secret	H	4-8	31,832	1083	991
Breck-A-De					
160	H	4-6	28,926	1080	897
Pei-Valley Farm					
2	H	6-7	27,003	1114	858
56	H	4-3	23,821	805	823

Woodlot Field Workshop, Tour Set

WILLIAMSPORT (Lycoming Co.) — A field workshop will be held on Saturday, May 14 at 9 a.m. Participants should meet at the road to Little Bear Creek, about three miles north of Loyalsockville off Route 87. There is a sign on the east side of Route 87 that reads "Little Bear Creek."

The workshop is sponsored by Penn State Cooperative Extension, The Loyalsock Men's Club, Lycoming County Woodland Owners Association, and the Pennsylvania Bureau of Forestry.

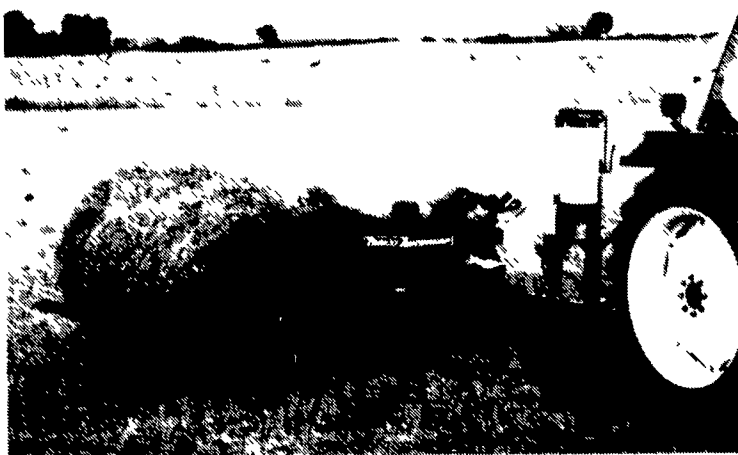
The workshop/tour will begin with a brief introduction to the stewardship projects and how these activities relate to the Pennsylvania Forest Stewardship Program. The next stop will consist of viewing and discussing reclamation efforts of old gas well drilling sites to improve wildlife habitat.

The next stop will view trout habitat restoration efforts under the Adopt-A-Stream program. The third stop will be on the Cotner Tract to observe waterfowl habitat improvement and streambank stabilization efforts.

The final stop will be Ed Reish's raptor rehabilitation center.

Bring your own picnic lunch. Softdrinks will be provided. Advance registration is requested by calling Penn State Cooperative Extension at (717) 265-2896.

TOP 10 REASONS



WHY YOU SHOULD BUY A

TANCO BALE WRAPPER

TANCO

COMPETITION

1. Five (5) points of support on turntable: Four heavy duty rollers add stability and support to the perimeter of the turntable in addition to the main central shaft. This allows Tanco wrappers to safely wrap the heaviest silage bales on rough or uneven ground.

Competition uses one central shaft to support the entire turntable mechanism

2. Single solid belt on turntable: The single belt enables Tanco wrappers to effectively wrap misshapen or soggy bales providing a positive surface for bale rotation.

Competition uses either no belts between rollers, or multiple belts which can allow bales to sag and slip

3. Adjustable extendable axle: On trailed models the extendable axle provides a wide, stable wheel base when loading bales. Eliminates the need for counter weights.

Competition must add counterweights or tandem axles as options to effectively handle silage bales



SEEING IS BELIEVING
We Welcome Pre-Season Demonstrations to Interested Customers.

Contact your local dealer to arrange a demo and more information on Tanco wrappers

Bull International
412-222-0450
291 Cameron Rd.
Wahington, PA 15301

Carlisle Farm Service
717-243-4419
260 York Road
Carlisle, PA 17013

Charles S. Snyder, Inc.
717-386-5945
Rt. 443, Box 109
Tamaqua, PA 18252

Clugston Farm Equipment
717-573-2215
Box 22, HCR-80
Needmore, PA 17238

Columbia Cross Roads
717-297-3873
Box 62, Rt. #14
Col Cross Rd., PA 16914

Dunkle & Grieb, Inc.
717-726-3115
RD#1, Box 498A
Mill Hall, PA 17751

Elder Sales & Service Inc.
412-376-3390
Rt 358 RD 1, Box 619
Stoneboro, PA 16153

Farmer Equipment Supply
717-862-3967
Route 74
Airville, PA 17302

Lebanon Valley Implement
717-866-7518
700 Linden Street
Box 100
Richland, PA 17087

North East Dist. & Equipment
717-222-9020
717-222-9090
Route 106,
PO Box 309
W. Clifford, PA 18413

Reichs Ford Tractor
301-662-7622
8016 Reichs Ford Rd.
Frederick, MD 21701

Robert Wilkins
814-635-3392
RD 1, Box 53
Saxton, PA 16678

Walter G. Coale, Inc.
410-838-6470
PO Box 38
Churchville, MD 21028



DISTRIBUTED BY:

CUMMINGS and BRICKER, Inc.

Wholesale Distributors

100-120 Lehigh Ave.
Batavia, New York 14021-0928
716/343-5411

100 Stover Drive
Carlisle, PA 17013
717/248-6720

TANCO

COMPETITION

4. Top rollers on turntable: Extra rollers provide security to keep bales in place when wrapping at high RPM's (25) or on uneven terrain.

Competition - None

5. Unloading ramp on trailed models: The ramp allows bales to be unloaded gently. When a wrapped bale falls hard it can "burp." Once it "burps" the bale does not re-seal. The ramp gives a smooth transition between the ground and turntable.

Competition - optional drop mats or ramps available

6. Optional "High Rise" axle kit for soft ground conditions.

Compare!

7. Models available to fit every individual need, including machines to wrap big square bales. Tanco was first to build a large square bale wrapper, and continues to produce advancements in bale wrapping technology.

Limited product lines

8. Positive bale positioning: While being wrapped, bales are rotated the exact distance required to obtain optimum coverage.

Competition uses continuous hydraulic advance. Bales can slip or over-rotate giving an uneven wrap

9. Durability: Tanco's subframe is one of the heaviest of any machines available in North America. The low profile design keeps silage bales closer to the ground with a low center of gravity for stability. Tanco's features are the result of years of experience and input from hundreds of individual, and commercial users.

Competition - Compare!

10. Price: From a basic 3 point Model AW200, to the trailed Model AW400 with automatic cut & start, bale and batch counter, and tractor seat controls, Tanco prices are very competitive. Pay less for more features and durability than any other bale wrapper on the market.

Competition - Compare!

TOWN AND COUNTRY POURED WALLS

- Manure Pits
- Retaining Walls
- House Basements
- Trench Silo Walls



(215) 593-5794
Ask For Ike

Underwriters Laboratories
Approved Master Labeled
Lightning Rod Systems



TEATES LIGHTNING PROTECTION

L.P.I. Certified Master Installer
Farm, Residential and Commercial

FREE ESTIMATES

TIM SHAFFER
(717) 374-7090

P.O. Box 136
Freeburg, PA 17827

HERNIA?

No hernia is unrepairable, even after several previous failed attempts. We specialize in outpatient hernia repairs, and most patients are able to return to full work within several days.

PLEASE CALL COLLECT OR WRITE FOR MORE INFORMATION

MID ATLANTIC SURGICAL SERVICES

217 Harrisburg Ave., Suite 201
Lancaster, PA 17603

(717) 295-5454

MOST INSURANCE ACCEPTED