

Delmarva Poultry Fund Drive

(Continued from Page A1)
nearly 4,000 persons and companies, including poultry growers, allied industry suppliers of products and services, Delmarva's eight poultry companies, poultry company employees, and hundreds of non-poultry businesses on Delmarva which recognize the economic importance of the industry to this area.

The Booster Banquet is also the occasion at which DPI presents awards to Delmarva's outstanding poultry growers and to two individuals who have made significant contributions to the poultry industry.

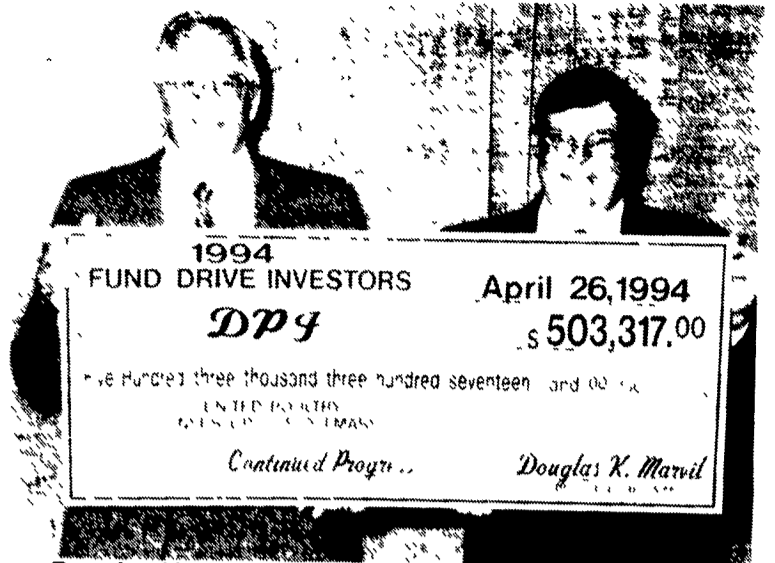
The DPI Medal of Achievement is awarded annually to a public servant of an agency or an organization for outstanding achievement and service on behalf of the poultry industry. This year's recipient is Dr. H. Wesley Towers,

Delaware State Veterinarian. During his 25 years in that position, he has worked closely with the poultry industry. A native of Delaware, he graduated from the University of Delaware with a major in animal and poultry science and then obtained his doctor of veterinary medicine degree from the University of Pennsylvania. Dr. Towers has been active in many local, regional, and national animal health organizations. As a member of DPI's Poultry Health Committee and Emergency Poultry Disease Task Force, he took a leadership role in last year's effort to keep avian influenza out of commercial chicken flocks. Dr. Towers was appointed to the Mid-Atlantic Poultry Health Council by the Governor of Delaware and serves as president-elect of the United States Animal Health Association.

Delmarva's Distinguished Citizen Award, given in recognition of a person's work on behalf of DPI, the poultry industry, and the community, was presented to Charles C. Marker of Dover, Delaware, a Delmarva poultry industry pioneer. Mr. Marker's hatchery business was opened in 1932. He later expanded his business to include feed production and breeding operations. His dominant white male breed premiered in 1944 and became an international line in the late 1950s. The addition of a female breed in the 1960s produced a highly competitive product in the marketplace. Mr. Marker served as president of the Delaware Poultry Improvement Association in 1942-43 and, while in that position, was one of the founding forces behind the organization that later became DPI. In 1945, he was appointed with ten other persons from across the nation to form a poultry commit-

tee for the American Farm Bureau Federation and he served on that committee for five years. A competitor in the Chicken of Tomorrow Contest in 1949 and 1950, he was active in regional and national poultry organizations in the 1940s and 1950s. Mr. Marker worked with a number of the local poultry equipment companies in developing new mechanical systems for the industry. He was involved in the formation of the Delaware Agricultural Museum. In 1987, at the age of 79, Mr. Marker sold his real estate complex in north Dover known as Marker's Hatchery and retired from active business operations. He is a former director of Kent General Hospital in Dover and a 50-year member of the Dover Kiwanis Club. He and his wife live near Dover on their son's poultry farm.

Other banquet honorees included 18 poultry growers selected by their companies as outstanding producers for 1994. They were presented silver bowls by DPI President Walter W. Moorhead and Grower Committee Chairman Kay R. Richardson. Receiving the awards were, from Delaware: Roschen and Rose Mary Hill, Delmar; Mike and Teresa Hitchens, Georgetown; Robert and Anna Mae Yeardt, Delmar; and Margaret M. Smith, Townsend. From Maryland: James Abell, Pocomoke; Gary and Terri Griffin, Parsonsburg; Hilmar Helgason, Rhoads; Tommy Jones, Crisfield; Bernadine and Woodie Larrimore, Federalsburg; Chas Nau Jr., Kennedyville; Robert and Bertha Pruitt, Salisbury; John and Anne Shults, Henderson; Carole and James Spicer, Vienna; Ruth and



Douglas Marvil, left, fund drive chairman, presents representative check to Walter Moorehead, president, Delmarva Poultry Industry, Inc., (DPI).

Carl Tull, Whaleyville; Kenny and Susan Wallace, Westover; Roland and Pat White, Pittsville; Robert D. Wilkinson, Salisbury; and Teeny and Doug Willey, East

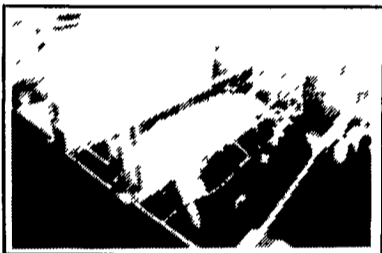
New Market.

Entertainment at the banquet was provided by singer, songwriter, and comedian Johnny Russell.

TRI-COUNTY

Confinement Systems, Inc.

SWINE CONFINEMENT EQUIPMENT and FACILITIES LEADER



PIG SAVER "DUTCH CRATE"

Developed through testing in our research farms the goal was to develop a crate that nearly eliminates crushing, due to lay ons, unmatched durability and be easy to work around. All this has been achieved by a unique gravity fliprail that forces sows to lie down slowly and using stainless steel for rear doors and legs, proven horizontal and solid steel rod construction. All this at a reasonable cost. Crate also can be installed on an angle

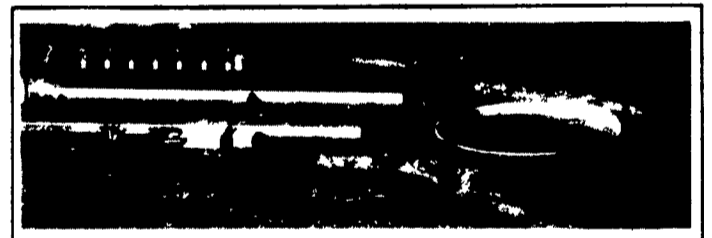


300 Sow Farrow - Feeder Pig Unit

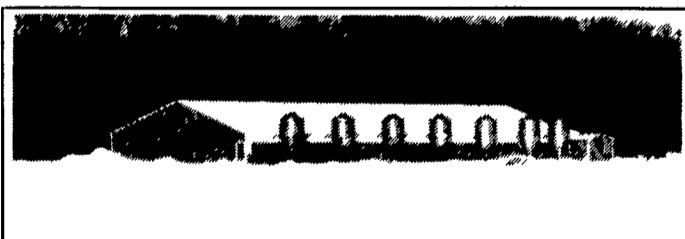


CONFINEMENT STALLS

Developed in our R&D farm Our goals were convenience, safety and durability. The low back and flat top rails are easy to reach over with no sharp edges. Stainless steel rear legs and front feet along with solid steel horizontal rods through punched uprights provide the strongest, most durable stall ever produced by Tri-County (21"-24" O C x86")



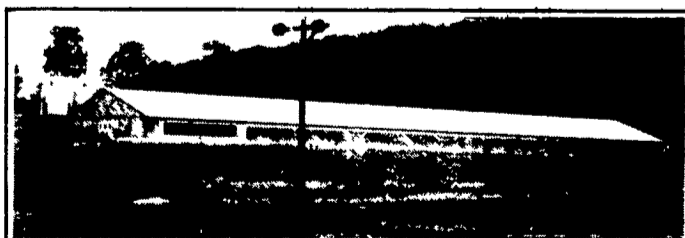
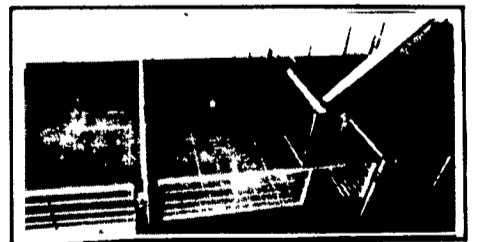
1200 Sow Farrow-Feeder Pig Unit



2800 HP Offsite Nursery (7 Rooms)
(Pull Plug, Preferred Ceiling Ventilated)

NURSERY PENNING

Nursery penning has been improved by the use of an optional solid stainless steel panel on the front gates which keeps walkways clean. Stainless steel feet on penning eliminate corrosion where penning attaches to the floor. Stainless steel drinker pipes & mounting brackets also increase durability.



2000 Head Finisher (2 Rooms)
(Deep Pit, Tunnel Ventilated)

FINISHING PENNING

Standard stainless steel feet and fasteners offer improved durability over other similar types of penning. Loop and flapper latch arrangement eliminates the use of drop pins. Stainless steel fence line feeders provide excellent durability and a minimum of waste.



Let Our Experienced Staff Assist In Planning A Successful Facility For You



TRI-COUNTY

CONFINEMENT SYSTEMS INC.

608 E. Evergreen Rd., Lebanon, PA 17042

Ph. 717-274-3488

HOURS:
Mon.-Fri.
7:00 to 4:30
Sat.
8:00 to 12:00

