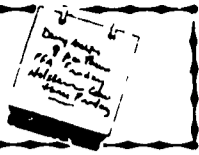


Farm Calendar



(Continued from Page A10)

Lancaster County FFA Leadership Conference, Lancaster Mennonite High School, 3 p.m.-9 p.m.
Thursday, May 12

Friday, May 13

Saturday, May 14

Eastern Pa. Farmers Union Spring Banquet, Days Inn, Harrisburg.
Sunday, May 15

Berks County 4-H Horse Council Open Horse Show, Berks 4-H Center, 9 a.m.

Monday, May 16

Nutrient Management Conference, Atlanta Airport Hilton Hotel, Atlanta, Ga., thru May 18.

Lancaster County 4-H Horse Production Club Reorganization Meeting, home of Samara Shuster-Edelson, Manheim, 7 p.m.

Tuesday, May 17

National Dairy Promotion and

Research Board 10th annual meeting, Park Hyatt, Washington, D.C., thru May 19.

Lancaster County Honey Producers meeting, Dale and Barbara Beiler, 6:30 p.m.
Wednesday, May 18

Thursday, May 19

Pa. Fair at Philadelphia Park, Bensalem, thru May 30.

Poultry Education and Research Center Dedication, Penn State University Park, 11 a.m.

Christmas Tree meeting, Conifer Ridge Farm, Purcell, 6 p.m.

Friday, May 20

Saturday, May 21

York County Dairy Princess Pageant, 4-H Center, 8 p.m.
Organizational meeting of Green Valley Cooperative, ASI Building, Penn State, 10 a.m.

Sunday, May 22

Monday, May 23
Lehigh Valley Horse Council meeting, Pleasant Hollow Farms, Coopersburg, 7:30 p.m.
Tuesday, May 24

Wednesday, May 25

Thursday, May 26

Friday, May 27

Atlantic National Angus Show, Timonium, Md., thru May 30.
Saturday, May 28

Sunday, May 29

Monday, May 30
Memorial Day

Tuesday, May 31

Wednesday, June 1
Nutrient Management Advisory Board meeting, 2301 N. Cameron St., Harrisburg, 9:30 a.m.-3:30 p.m.

Pa. Dairy Industry Futures Forum, Penn State Scanticon Conference Center Hotel, University Park.

Thursday, June 2

Friday, June 3

Philadelphia County Fair, Fairmount Park, thru June 12.

Saturday, June 4

Md. State 4-H Horse Judging Contest, Howard County Fairground.

Md. 4-H Dairy Youth Fun, Frederick County 4-H Camp and Activities Center, thru June 5.
Sunday, June 5

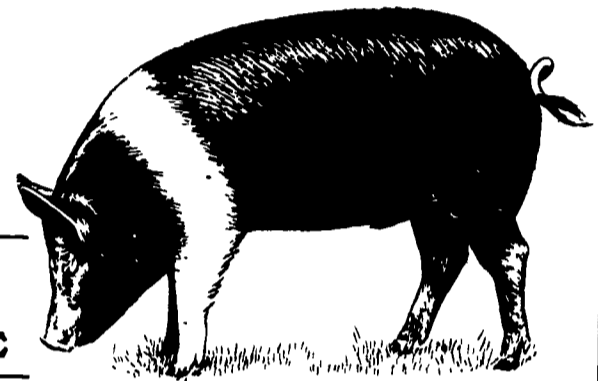
DON'T LOOK ANY FURTHER!
YOU'LL FIND IT IN LANCASTER FARMING'S CLASSIFIEDS

NOW RECEIVING MARKET HOGS FOR SLAUGHTER ONLY

220-260 LB.

TUESDAY 6:30-10:00 AM
FRIDAY 6:30-10:00 AM

ALL MARKET HOGS MUST BE SCHEDULED ONE WEEK IN ADVANCE



SOUTHSIDE PORK PACKERS

322 South Wyoming Street
Hazleton, Penna. 18201

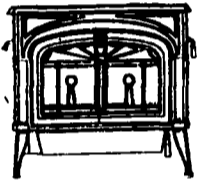
717-454-6761

717-455-4199

I-81 To Exit 39, 309 North to Hazleton First
Right After Mack Dealer, Second Right on Wyoming Street
A Hazle Pork Packing Company Affiliate

LOOKING FOR...

- STOVES • HAMMOCKS • GAS GRILLS
- PATIO FURNITURE & MUCH MORE.



Vermont Castings



Hatteras Hammocks

Hammock Prices From \$27-\$150



TELESCOPE PATIO FURNITURE



Ducona

Grill Prices Start At \$379

Hearth Products • Gas Grills • Casual Furniture

906 E. Main St. (Rt. 322) Ephrata, PA
1 Block East of Rt. 222

(717) 733-4973
1-800-642-0310

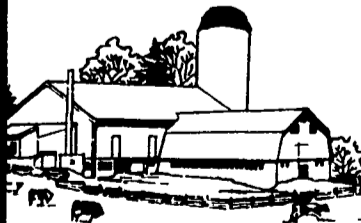
BOWMAN'S STOVE & PATIO INC.

Mon., Tues., Wed. 10 to 6; Thurs., Fri. 10 to 8; Sat. 10 to 4

WHITEWASHING with ADVANTAGE FARM WHITE

- DRIES WHITE • NO WET FLOORS
- IS COMPATIBLE WITH DISINFECTANT AND FLY SPRAYS
- DOES NOT RUB OFF EASILY
- WASHES OFF WINDOWS & PIPELINES EASILY

BARN CLEANING SERVICE AVAILABLE WITH COMPRESSED AIR



To have your barn cleaned with air it will clean off dust, cob webs & lots of the old lime. This will keep your barn looking cleaner & whiter longer.

CALL US ABOUT ON THE FARM FLY CONTROL

Serving Southeastern Pa. And More

BEITZEL'S SPRAYING

Witmer, PA 17585 717-392-7227 or

Toll Free 1-800-727-7228 7:00 AM to 5:00 PM

CERTIFIED COMMERCIAL APPLICATORS

LICENSED 32 Years Experience INSURED

5 Trucks For Air Cleaning And Whitewashing
RADIO DISPATCHED TRUCKS

Barn Spraying Is Our Business, not a sideline.
Spraying Since 1961

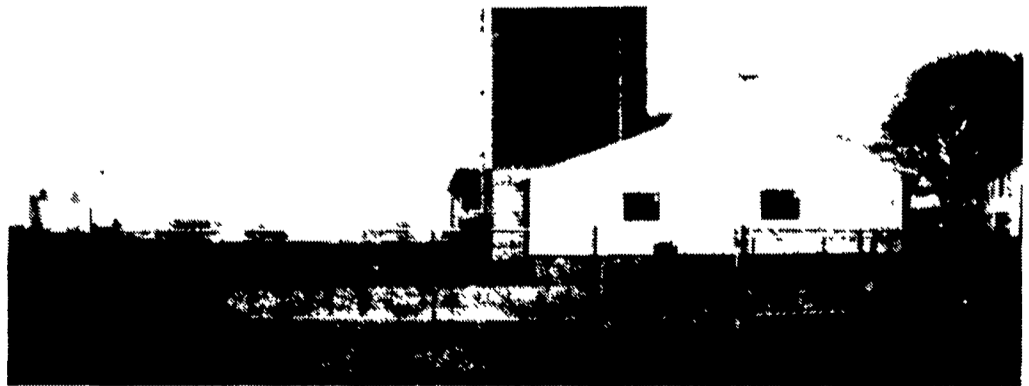
PRECISE CONCRETE WALLS, INC.

For All Your Concrete Walls And Construction Needs

Agriculture - Residential - Commercial

- Buildings • Basement • Floors
- Retaining Walls • Footer
- SCS Approved Manure Storage Pits
- All Types Of Flat Work

Specializing In Manure Storage
Round Or Rectangular
In Ground Or Above Ground



65' Diameter SCS Approved Circular Manure Storage

Invest In Concrete, Quality Work That Will Last A Lifetime

CALL FOR FREE ESTIMATES AND SEE HOW AFFORDABLE CONCRETE WALLS CAN BE

CONTACT ROY SENSENIG 717-355-0726

PRECISE CONCRETE WALLS, INC.

601 Overly Grove Road, New Holland, PA 17557