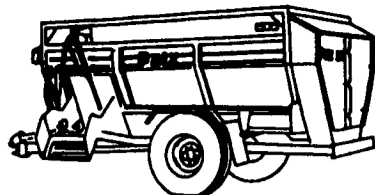


## Consider a REAL Open-Top Mixer

- REAL mixing with four large counter-rotating augers for fast, thorough blending of feeds. The large augers are designed specifically to handle the feed gently.
- REAL mixing-capacity numbers: You can use much more of the Patz Mixer's struck-level capacity for mixing than with a reel-type mixer.
- REAL strength with heavy-gauge steel sides and bottoms for long service life.



Trailer-mounted auger mixers

# Patz

Ask to see the video of the REAL Patz Mixer. Also, we will be glad to discuss an on-farm demonstration.

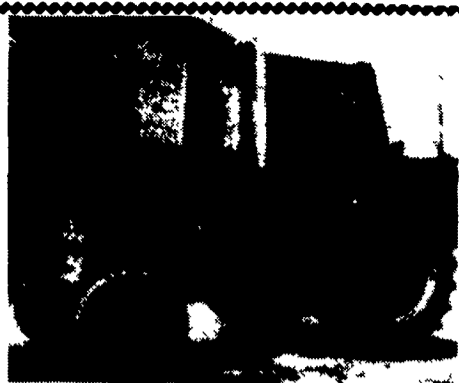


WITMER IMPLEMENT SERVICE

HOULE

Patz

1896 BEDFORD ROAD • SHIPPENSBURG, PA 17257  
PHONE: (717) 532-6139 OR (800) 377-3011



1981 1086 2900 Hrs., New TA, Clutch  
**\$14,000**  
Hay Heads  
JD 7 Ft. Pickup  
NH 900 w/7 Ft. Pickup  
**301-334-8517**

### Excellent Ford Tractors

- TW-20, cab, air, 18.4Rx38, weights, 3,500 hrs.
- TW-15 II, cab, air, 4WD, 20.8x38, 1,200 hrs.
- 7710 II, cab, air, 18.4Rx34, 1990 model, 1,100 hrs.
- 7800, DP, dual hyd., canopy, 18.4x34, 2,200 hrs.
- 6610, 4WD, DP, **SOLD** notes w/Ford 7410 loader, 2,800 hrs.
- 6610, DP, dual deluxe hyd., 18x34, 2,000 hrs.
- 6610, DP, dual remotes, roll bar, 18x34, 1,900 hrs.
- 5610 II, 4WD, cab & air, 18.4x30, 1,500 hrs.
- 5610 II, 4WD, DP, dual deluxe remotes, roll bar, canopy, w/Ford QT loader, 750 hours
- 5600, factory cab & air, DP, 2 remotes, 540/1000 PTO, 1,200 hrs., local 1 owner
- 5000, diesel, DP, dual hyd., 540/1000 PTO, 16.9Rx38, NFE, 4,000 hrs., local 1 owner trade
- 4630, 4WD, 8x8 trans., dual deluxe hyd., 380 hrs.
- 4610 II, syncro trans., 16.9x30, 1,100 hrs.
- 4000 SU, gas, 8 spd., 2,700 hrs., 1 owner
- 4000, diesel, 8 spd., 16.9x30, 4,000 hrs.
- 3930, 4WD, 14.9x28 w/Allied 394 loader, 1992 model w/230 hrs.
- 3910 II, 4WD, dual deluxe remote w/Ford 7410 loader, 750 hrs.
- 3910 II, rollbar & canopy w/Ford loader, 550 hrs.
- 3910 II, del., roll bar, 13.6x28, weights, 200 hrs.
- 2600, diesel, 8 spd., LPTO, PS, 3,100 hrs.
- 1920, 4WD, shuttle w/Ford loader, 800 hrs.
- JD 2955, hi/low, 18.4x38, 1,900 hrs.

### Equipment

- FNH 489 haybine, like new
- NH 489 haybine, good condition
- FNH 824 corn head, like new
- NH 25 forage blower, good condition
- FNH 254 rake & tedder
- Roll bar fits 5000 thru 7610
- Arps 90, 3 pt. backhoe **SOLD**
- FNH 900 chopper, Met Alert, 900W hay head, 824 2 row or 360 3 row, only 2 yrs. old

### Ford Loaders

- 7410 QT fits 2WD & 4WD, 5610 thru 7610
- 777D QT fits 2WD, 7700 & 7710

All Tractors Tested On Our Farms.  
— Please Call For Appointment —

**Burkholder Bros.**  
Lebanon, PA  
717-272-2352 717-949-2123

## Hypno

## Myers



COMPLETE LINE OF  
PUMPS, PARTS &  
ACCESSORIES

COMPLETE LINE OF  
PUMPS, PARTS &  
ACCESSORIES

YOUR SOURCE FOR SPRAYER PUMPS  
CALL FOR YOUR LOW PRICE

# WATSON

Contractor  
& Supply, Inc.

5301 E. Trindle Rd., Mechanicsburg, PA 17055  
(717) 796-1630

**Toll Free 800-999-1630**

### Tractors

- Ford TW5, 4x4, Like New
- Ford TW-25, 4x4, Cab, Air
- Ford 8730, 4x4, Power Shift, 500 Hrs.
- Ford 9600, Cab, Air, 20.8 Tires
- Ford 1715, 4x4, 26 Hrs.
- Ford 6640S Power Star
- Ford 6700 3000 Hrs.
- Ford 7700 New Tires
- IH 766 Black Stripe, 2000 Hrs.
- IH 986 Cab, Air, 2800 Hrs.
- IH 766 Gas, WF
- IH 1206 D
- Case 2470 4x4, 170 HP
- IH 5288, Cab, Air, Duals
- JD 2440
- JD 2030
- AC 6080 4x4, Cab, Air
- David Brown 1210 With Loader
- Zetor 10145 Cab, 4x4
- Zetor 6211
- Zetor 5245 With Loader

**ALLAN HART  
And SONS**

RD 2 Cochran, PA 16314  
(814) 425-7094

## Best Buys in Used Equipment

### TRACTORS

- Case IH 7120
- Case SC Tractor
- Case 430
- Case IH 585
- Case IH 885
- Case 995
- Case 1370
- Case 1690
- IH 86 Hydro
- IH 574 w/Loader
- IH 2500A Tractor w/Loader
- Int. 674
- Farmall 300
- Ford 8N
- Massey Ferguson 2705
- Oliver 1755 - Mechanics Special

### HARVESTING EQUIPMENT

- Hesston 2000-100 Harvester
- NI 717 Combine
- NI 844N
- NI 315 Sheller
- NI 324 Sheller
- NI 727 Husking Bed
- NI 323 1-Row Corn-picker
- NI 325 12 Row Husking Bed

### TILLAGE

- Ford 5-Bottom Plow
- Case 16" Reset Plow, 5 Bottom
- IH 550 5 Bottom Plow
- JD 6-18 Plow
- JD 1120 Disk
- Bush Hog 15 Ft. Disk
- Case 7 Tooth Consertil
- Ford 10 Ft. Disk Harrow
- IH 720, 18" 5-Bottom Plow
- JD 2600 5 Bottom Plow
- Taylor-Way 24' Cushion Disk

### LOADERS

- Case 530 Backhoe
- Case 1835B
- Case 1835C
- Case 1835 Gas
- Case 1830
- Case 1845 Diesel
- Case 1845B Diesel

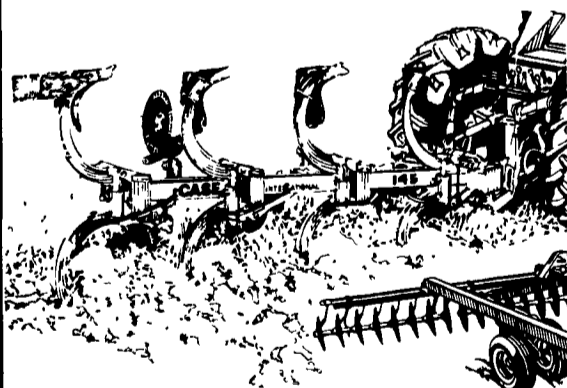
### MISCELLANEOUS

- Farmmaster Tumble Mixer
- Int. 105 Grinder Mixer
- 210 Cu. Ft. Trailer Mixer Wagon
- Kverneland Bale Wrapper
- NH 36 ft. Elevator
- Gehl 99 Blower
- IH 600 Blower
- Automatic Roller Mill
- NI 213 Spreader
- NI 218 Spreader
- HM 1674 Spreader
- Gehl 250 Spreader
- 500 Gal. Century Sprayer
- Weaverline 430, Nice
- High Rise Cart
- IH 5100 Drill
- JD KBB 13x7 Drill
- JD 8300 Drill—Soybean Special!
- JD 8350 Drill, 21x7
- NI 3618 Spreader
- NI 3622 Spreader
- NI 3626 Spreader
- NI 3632 Spreader
- Ford Loader
- Miller Spreader
- Archway 16' Wagon
- Gehl 16 Ft. Forage Wagon
- Calumet Spreader
- IH 56 Blower

### HAY EQUIPMENT

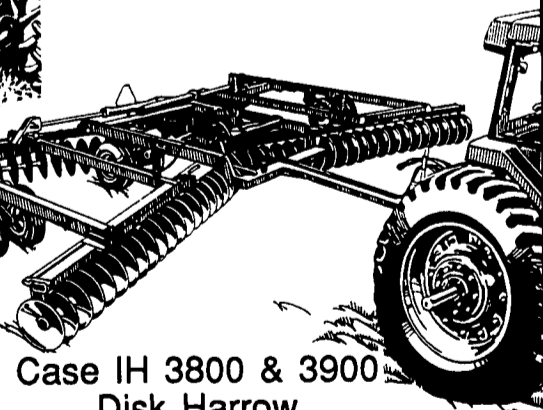
- Hesston 1150 Mower Conditioner
- NH 78 Baler
- NH 479 Haybine
- NH 1495 SP
- Hesston 1014's, \$2,600
- Hesston 1090 Wind-rower
- Hesston 1091 Wind-rower
- IH 445 Square Baler
- IH 1190 Mower Cond.
- NI 488 Round Baler
- (2) Case Int. 8330 Windrower

## For Your Tillage Needs See... Zimmerman's



Case IH 145  
Two-Way Plow  
3 Bottom  
In Stock!

Case IH 7500 4 & 5 Bottom  
In Stock!



Case IH 3800 & 3900  
Disk Harrow

Special Pricing For Spring Tillage  
Call Today

## Zimmerman's Farm Service

1/2 Mile West Of Rt. 501 On School Road  
Bethel, PA  
717-933-4114

## ZIMMERMAN'S FARM SERVICE

1/2 Mile West Off Rt. 501 On School Rd., Bethel, Pa.  
717-933-4114

