

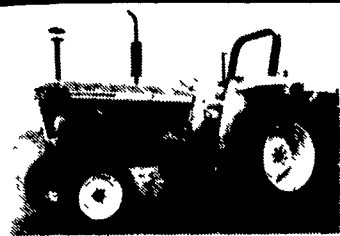
# WENGER'S FARM MACHINERY, INC.

Ask For:  
Dave Wenger  
Or  
Alvin Martin

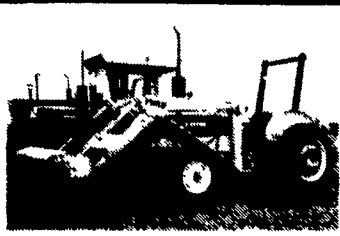
ROUTE 501 - 1 MILE SOUTH OF MYERSTOWN, PA.  
717-866-2135

Mailing Address: 251 S. Race St.  
Myerstown, PA 17067

HOURS:  
MON.-FRI. 7:30-5  
SAT. 7:30-NOON



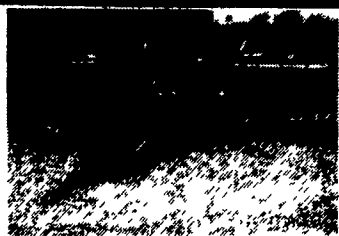
1993 Ford 5900 Diesel, 16.9x30 Tires, 1 Remote, 10 Hours, Brand New! 62 HP.



1986 Ford 2910 Diesel w/Ford Loader, P.S., 3 Pt., Rollbar, Very Nice, Low Hours.



Case IH 183 4 Row Danish Tine Cultivator, Also Others To Choose From.



New Holland 258 Hay Rake w/Dolly Wheel, Rubber Teeth, Ready To Go.



1972 John Deere 4320 w/Cab, Duals, Weights, Quik-Hitch, Super Sharp.



Good Used Spring Plow Colters For Most Plows Inc. JD, IH, White.



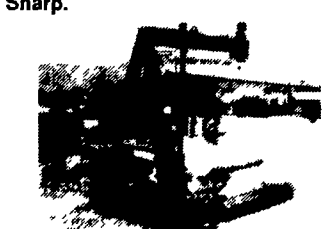
Kubota L245H Offset w/Cult. And Side Dresser, Rollbar w/Canopy.



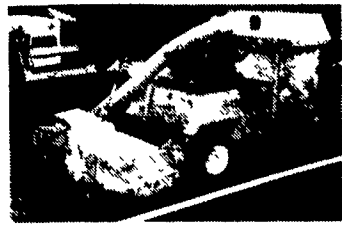
John Deere 2030 Diesel, w/Ind. PTO, 1R, Rabbit & Turtle, Very Nice- JD Loader Available.



Brillion 16' Cultipacker w/End Transport, 4" Axle, Nice Condition, Also Have One W/O Transport.



Acme Gerrard Model Bee 3 Pt. Bale Wrapper Used Very Little.



Woods 1250 Mow'n Machine w/44" Deck And Bagger Attachment 12HP Vanguard Engine.



New Idea 40' Elevator w/Electric Motor And PTO Drive - Also A New Buffalo Valley 36' Elevator.



Alamo-Terrain King TK15' Wing Rotary Mower, 540 PTO, Good Condition - Also Have A JD 1508 Wing Mower.



JD 7200 4R Planter, Unit Mt. No Til Coulters, Vacuum, Dry Fertilizer, Super Sharp, Compu Trak 100.



JD 7200 4R Planter, Dry Fertilizer, Vacuum, Hydraulic Markers, Nice Condition, Compu Trak 100.

### COMING IN SOON

White 2-135 w/Cab  
IH 720 7X On Land Plow  
Ford 2600, Gas, Cab And Loader  
Brillion 12' Cultimulcher  
Bearcat 10' Cultimulcher  
JD 6R Front Mt. Cultivator  
JD 8R Front Mt. Cultivator  
IH 966 w/Cab  
18 4x38 Clamp On Duals

### MISCELLANEOUS

Gehl 95 Grinder Mixer  
Farmhand F81 Grinder Mixer  
NH 352 Grinder Mixer  
JD And MF Cat II Quik Hitch  
8' 3 Pt. Fuerst Chain Harrow  
Westgo Rock Picker  
Apache 3 Pt. PTO Brush Chipper  
Side dressers for Cub  
50 Gallon 3 Pt. Sprayer  
Campbell 400 gal. sprayer - Pull Type  
(2) Brillion 5'6" seeders- (1 New)  
(2) Brillion 10' & 11' Packer Seeders  
New and Used spike harrows  
New Long Rotary Tillers, 55", 63", 72"  
(6) Gravity Bin Wagons  
Oliver 1R PTO Tater Digger  
1 Row 3 Pt. Tater Digger  
New 9" & 12" post hole diggers  
Westfield 4x11 And 6x16 Augers  
Shaver 11D8 And HD10 Post Drivers  
MF & JD 10' 3 pt. spring tooth harrow  
Knuedler PTO Burr Mill

### PLOWS

White 349 4x16 Auto Reset  
White 349 5x18 Auto Reset  
White 370 6x18 Auto Reset  
Oliver 370 4x16 Auto Reset  
White 370 5x18 Auto Reset  
IH 370 6x18 Auto Reset  
IH 370 10' 3 pt. spring tooth harrow  
IH 370 12' 3 pt. spring tooth harrow  
IH 370 14' 3 pt. spring tooth harrow  
IH 370 16' 3 pt. spring tooth harrow  
IH 370 18' 3 pt. spring tooth harrow  
IH 370 20' 3 pt. spring tooth harrow  
IH 370 22' 3 pt. spring tooth harrow  
IH 370 24' 3 pt. spring tooth harrow  
IH 370 26' 3 pt. spring tooth harrow  
IH 370 28' 3 pt. spring tooth harrow  
IH 370 30' 3 pt. spring tooth harrow  
IH 370 32' 3 pt. spring tooth harrow  
IH 370 34' 3 pt. spring tooth harrow  
IH 370 36' 3 pt. spring tooth harrow  
IH 370 38' 3 pt. spring tooth harrow  
IH 370 40' 3 pt. spring tooth harrow  
IH 370 42' 3 pt. spring tooth harrow  
IH 370 44' 3 pt. spring tooth harrow  
IH 370 46' 3 pt. spring tooth harrow  
IH 370 48' 3 pt. spring tooth harrow  
IH 370 50' 3 pt. spring tooth harrow  
IH 370 52' 3 pt. spring tooth harrow  
IH 370 54' 3 pt. spring tooth harrow  
IH 370 56' 3 pt. spring tooth harrow  
IH 370 58' 3 pt. spring tooth harrow  
IH 370 60' 3 pt. spring tooth harrow  
IH 370 62' 3 pt. spring tooth harrow  
IH 370 64' 3 pt. spring tooth harrow  
IH 370 66' 3 pt. spring tooth harrow  
IH 370 68' 3 pt. spring tooth harrow  
IH 370 70' 3 pt. spring tooth harrow  
IH 370 72' 3 pt. spring tooth harrow  
IH 370 74' 3 pt. spring tooth harrow  
IH 370 76' 3 pt. spring tooth harrow  
IH 370 78' 3 pt. spring tooth harrow  
IH 370 80' 3 pt. spring tooth harrow  
IH 370 82' 3 pt. spring tooth harrow  
IH 370 84' 3 pt. spring tooth harrow  
IH 370 86' 3 pt. spring tooth harrow  
IH 370 88' 3 pt. spring tooth harrow  
IH 370 90' 3 pt. spring tooth harrow  
IH 370 92' 3 pt. spring tooth harrow  
IH 370 94' 3 pt. spring tooth harrow  
IH 370 96' 3 pt. spring tooth harrow  
IH 370 98' 3 pt. spring tooth harrow  
IH 370 100' 3 pt. spring tooth harrow  
IH 370 102' 3 pt. spring tooth harrow  
IH 370 104' 3 pt. spring tooth harrow  
IH 370 106' 3 pt. spring tooth harrow  
IH 370 108' 3 pt. spring tooth harrow  
IH 370 110' 3 pt. spring tooth harrow  
IH 370 112' 3 pt. spring tooth harrow  
IH 370 114' 3 pt. spring tooth harrow  
IH 370 116' 3 pt. spring tooth harrow  
IH 370 118' 3 pt. spring tooth harrow  
IH 370 120' 3 pt. spring tooth harrow  
IH 370 122' 3 pt. spring tooth harrow  
IH 370 124' 3 pt. spring tooth harrow  
IH 370 126' 3 pt. spring tooth harrow  
IH 370 128' 3 pt. spring tooth harrow  
IH 370 130' 3 pt. spring tooth harrow  
IH 370 132' 3 pt. spring tooth harrow  
IH 370 134' 3 pt. spring tooth harrow  
IH 370 136' 3 pt. spring tooth harrow  
IH 370 138' 3 pt. spring tooth harrow  
IH 370 140' 3 pt. spring tooth harrow  
IH 370 142' 3 pt. spring tooth harrow  
IH 370 144' 3 pt. spring tooth harrow  
IH 370 146' 3 pt. spring tooth harrow  
IH 370 148' 3 pt. spring tooth harrow  
IH 370 150' 3 pt. spring tooth harrow  
IH 370 152' 3 pt. spring tooth harrow  
IH 370 154' 3 pt. spring tooth harrow  
IH 370 156' 3 pt. spring tooth harrow  
IH 370 158' 3 pt. spring tooth harrow  
IH 370 160' 3 pt. spring tooth harrow  
IH 370 162' 3 pt. spring tooth harrow  
IH 370 164' 3 pt. spring tooth harrow  
IH 370 166' 3 pt. spring tooth harrow  
IH 370 168' 3 pt. spring tooth harrow  
IH 370 170' 3 pt. spring tooth harrow  
IH 370 172' 3 pt. spring tooth harrow  
IH 370 174' 3 pt. spring tooth harrow  
IH 370 176' 3 pt. spring tooth harrow  
IH 370 178' 3 pt. spring tooth harrow  
IH 370 180' 3 pt. spring tooth harrow  
IH 370 182' 3 pt. spring tooth harrow  
IH 370 184' 3 pt. spring tooth harrow  
IH 370 186' 3 pt. spring tooth harrow  
IH 370 188' 3 pt. spring tooth harrow  
IH 370 190' 3 pt. spring tooth harrow  
IH 370 192' 3 pt. spring tooth harrow  
IH 370 194' 3 pt. spring tooth harrow  
IH 370 196' 3 pt. spring tooth harrow  
IH 370 198' 3 pt. spring tooth harrow  
IH 370 200' 3 pt. spring tooth harrow  
IH 370 202' 3 pt. spring tooth harrow  
IH 370 204' 3 pt. spring tooth harrow  
IH 370 206' 3 pt. spring tooth harrow  
IH 370 208' 3 pt. spring tooth harrow  
IH 370 210' 3 pt. spring tooth harrow  
IH 370 212' 3 pt. spring tooth harrow  
IH 370 214' 3 pt. spring tooth harrow  
IH 370 216' 3 pt. spring tooth harrow  
IH 370 218' 3 pt. spring tooth harrow  
IH 370 220' 3 pt. spring tooth harrow  
IH 370 222' 3 pt. spring tooth harrow  
IH 370 224' 3 pt. spring tooth harrow  
IH 370 226' 3 pt. spring tooth harrow  
IH 370 228' 3 pt. spring tooth harrow  
IH 370 230' 3 pt. spring tooth harrow  
IH 370 232' 3 pt. spring tooth harrow  
IH 370 234' 3 pt. spring tooth harrow  
IH 370 236' 3 pt. spring tooth harrow  
IH 370 238' 3 pt. spring tooth harrow  
IH 370 240' 3 pt. spring tooth harrow  
IH 370 242' 3 pt. spring tooth harrow  
IH 370 244' 3 pt. spring tooth harrow  
IH 370 246' 3 pt. spring tooth harrow  
IH 370 248' 3 pt. spring tooth harrow  
IH 370 250' 3 pt. spring tooth harrow  
IH 370 252' 3 pt. spring tooth harrow  
IH 370 254' 3 pt. spring tooth harrow  
IH 370 256' 3 pt. spring tooth harrow  
IH 370 258' 3 pt. spring tooth harrow  
IH 370 260' 3 pt. spring tooth harrow  
IH 370 262' 3 pt. spring tooth harrow  
IH 370 264' 3 pt. spring tooth harrow  
IH 370 266' 3 pt. spring tooth harrow  
IH 370 268' 3 pt. spring tooth harrow  
IH 370 270' 3 pt. spring tooth harrow  
IH 370 272' 3 pt. spring tooth harrow  
IH 370 274' 3 pt. spring tooth harrow  
IH 370 276' 3 pt. spring tooth harrow  
IH 370 278' 3 pt. spring tooth harrow  
IH 370 280' 3 pt. spring tooth harrow  
IH 370 282' 3 pt. spring tooth harrow  
IH 370 284' 3 pt. spring tooth harrow  
IH 370 286' 3 pt. spring tooth harrow  
IH 370 288' 3 pt. spring tooth harrow  
IH 370 290' 3 pt. spring tooth harrow  
IH 370 292' 3 pt. spring tooth harrow  
IH 370 294' 3 pt. spring tooth harrow  
IH 370 296' 3 pt. spring tooth harrow  
IH 370 298' 3 pt. spring tooth harrow  
IH 370 300' 3 pt. spring tooth harrow

### DISC HARROWS

White 271 20' Rockflex Wing Disc  
IH 37 10' Disc w/Lift Cylinder  
(2) IH 370 10' Disc w/Lift Cylinder  
Krause 1425 20' Rockflex Disc  
Miller 11' Offset  
White 281 10 1/2' Offset Disc  
IH 8' Offset Disc- Small Frame  
JD 111 8' Rock Flex Disc (Sharp)  
JD BW 13' Disc  
JD 620 9' Disc Like New  
JD 110 14' Disc  
Bush Hog 12' Cutting Disc  
IH 500 13' Cutting Disc  
Several 3 Pt. Hitch Discs- Call

### FARM TRACTORS

AC 185 Diesel w/Cab, Sharp  
AC 7080 w/Cab, Air, Sharp  
White 2 105 w/Canopy 2,340 Hours  
Case 4890 4WD 250 HP, 3 Pt. PTO  
Case 4490 4WD, 175 HP, 3 Pt. PTO  
Case 390 w/Cab, Nice  
IH 370 4 Post Quad 2R 18 4x28  
(2) IH 370 5 Post Quad 2R 18 4x28  
IH 370 6 Post Quad 2R 18 4x28  
IH 370 7 Post Quad 2R 18 4x28  
IH 370 8 Post Quad 2R 18 4x28  
IH 370 9 Post Quad 2R 18 4x28  
IH 370 10 Post Quad 2R 18 4x28  
IH 370 11 Post Quad 2R 18 4x28  
IH 370 12 Post Quad 2R 18 4x28  
IH 370 13 Post Quad 2R 18 4x28  
IH 370 14 Post Quad 2R 18 4x28  
IH 370 15 Post Quad 2R 18 4x28  
IH 370 16 Post Quad 2R 18 4x28  
IH 370 17 Post Quad 2R 18 4x28  
IH 370 18 Post Quad 2R 18 4x28  
IH 370 19 Post Quad 2R 18 4x28  
IH 370 20 Post Quad 2R 18 4x28  
IH 370 21 Post Quad 2R 18 4x28  
IH 370 22 Post Quad 2R 18 4x28  
IH 370 23 Post Quad 2R 18 4x28  
IH 370 24 Post Quad 2R 18 4x28  
IH 370 25 Post Quad 2R 18 4x28  
IH 370 26 Post Quad 2R 18 4x28  
IH 370 27 Post Quad 2R 18 4x28  
IH 370 28 Post Quad 2R 18 4x28  
IH 370 29 Post Quad 2R 18 4x28  
IH 370 30 Post Quad 2R 18 4x28  
IH 370 31 Post Quad 2R 18 4x28  
IH 370 32 Post Quad 2R 18 4x28  
IH 370 33 Post Quad 2R 18 4x28  
IH 370 34 Post Quad 2R 18 4x28  
IH 370 35 Post Quad 2R 18 4x28  
IH 370 36 Post Quad 2R 18 4x28  
IH 370 37 Post Quad 2R 18 4x28  
IH 370 38 Post Quad 2R 18 4x28  
IH 370 39 Post Quad 2R 18 4x28  
IH 370 40 Post Quad 2R 18 4x28  
IH 370 41 Post Quad 2R 18 4x28  
IH 370 42 Post Quad 2R 18 4x28  
IH 370 43 Post Quad 2R 18 4x28  
IH 370 44 Post Quad 2R 18 4x28  
IH 370 45 Post Quad 2R 18 4x28  
IH 370 46 Post Quad 2R 18 4x28  
IH 370 47 Post Quad 2R 18 4x28  
IH 370 48 Post Quad 2R 18 4x28  
IH 370 49 Post Quad 2R 18 4x28  
IH 370 50 Post Quad 2R 18 4x28  
IH 370 51 Post Quad 2R 18 4x28  
IH 370 52 Post Quad 2R 18 4x28  
IH 370 53 Post Quad 2R 18 4x28  
IH 370 54 Post Quad 2R 18 4x28  
IH 370 55 Post Quad 2R 18 4x28  
IH 370 56 Post Quad 2R 18 4x28  
IH 370 57 Post Quad 2R 18 4x28  
IH 370 58 Post Quad 2R 18 4x28  
IH 370 59 Post Quad 2R 18 4x28  
IH 370 60 Post Quad 2R 18 4x28  
IH 370 61 Post Quad 2R 18 4x28  
IH 370 62 Post Quad 2R 18 4x28  
IH 370 63 Post Quad 2R 18 4x28  
IH 370 64 Post Quad 2R 18 4x28  
IH 370 65 Post Quad 2R 18 4x28  
IH 370 66 Post Quad 2R 18 4x28  
IH 370 67 Post Quad 2R 18 4x28  
IH 370 68 Post Quad 2R 18 4x28  
IH 370 69 Post Quad 2R 18 4x28  
IH 370 70 Post Quad 2R 18 4x28  
IH 370 71 Post Quad 2R 18 4x28  
IH 370 72 Post Quad 2R 18 4x28  
IH 370 73 Post Quad 2R 18 4x28  
IH 370 74 Post Quad 2R 18 4x28  
IH 370 75 Post Quad 2R 18 4x28  
IH 370 76 Post Quad 2R 18 4x28  
IH 370 77 Post Quad 2R 18 4x28  
IH 370 78 Post Quad 2R 18 4x28  
IH 370 79 Post Quad 2R 18 4x28  
IH 370 80 Post Quad 2R 18 4x28  
IH 370 81 Post Quad 2R 18 4x28  
IH 370 82 Post Quad 2R 18 4x28  
IH 370 83 Post Quad 2R 18 4x28  
IH 370 84 Post Quad 2R 18 4x28  
IH 370 85 Post Quad 2R 18 4x28  
IH 370 86 Post Quad 2R 18 4x28  
IH 370 87 Post Quad 2R 18 4x28  
IH 370 88 Post Quad 2R 18 4x28  
IH 370 89 Post Quad 2R 18 4x28  
IH 370 90 Post Quad 2R 18 4x28  
IH 370 91 Post Quad 2R 18 4x28  
IH 370 92 Post Quad 2R 18 4x28  
IH 370 93 Post Quad 2R 18 4x28  
IH 370 94 Post Quad 2R 18 4x28  
IH 370 95 Post Quad 2R 18 4x28  
IH 370 96 Post Quad 2R 18 4x28  
IH 370 97 Post Quad 2R 18 4x28  
IH 370 98 Post Quad 2R 18 4x28  
IH 370 99 Post Quad 2R 18 4x28  
IH 370 100 Post Quad 2R 18 4x28  
IH 370 101 Post Quad 2R 18 4x28  
IH 370 102 Post Quad 2R 18 4x28  
IH 370 103 Post Quad 2R 18 4x28  
IH 370 104 Post Quad 2R 18 4x28  
IH 370 105 Post Quad 2R 18 4x28  
IH 370 106 Post Quad 2R 18 4x28  
IH 370 107 Post Quad 2R 18 4x28  
IH 370 108 Post Quad 2R 18 4x28  
IH 370 109 Post Quad 2R 18 4x28  
IH 370 110 Post Quad 2R 18 4x28  
IH 370 111 Post Quad 2R 18 4x28  
IH 370 112 Post Quad 2R 18 4x28  
IH 370 113 Post Quad 2R 18 4x28  
IH 370 114 Post Quad 2R 18 4x28  
IH 370 115 Post Quad 2R 18 4x28  
IH 370 116 Post Quad 2R 18 4x28  
IH 370 117 Post Quad 2R 18 4x28  
IH 370 118 Post Quad 2R 18 4x28  
IH 370 119 Post Quad 2R 18 4x28  
IH 370 120 Post Quad 2R 18 4x28  
IH 370 121 Post Quad 2R 18 4x28  
IH 370 122 Post Quad 2R 18 4x28  
IH 370 123 Post Quad 2R 18 4x28  
IH 370 124 Post Quad 2R 18 4x28  
IH 370 125 Post Quad 2R 18 4x28  
IH 370 126 Post Quad 2R 18 4x28  
IH 370 127 Post Quad 2R 18 4x28  
IH 370 128 Post Quad 2R 18 4x28  
IH 370 129 Post Quad 2R 18 4x28  
IH 370 130 Post Quad 2R 18 4x28  
IH 370 131 Post Quad 2R 18 4x28  
IH 370 132 Post Quad 2R 18 4x28  
IH 370 133 Post Quad 2R 18 4x28  
IH 370 134 Post Quad 2R 18 4x28  
IH 370 135 Post Quad 2R 18 4x28  
IH 370 136 Post Quad 2R 18 4x28  
IH 370 137 Post Quad 2R 18 4x28  
IH 370 138 Post Quad 2R 18 4x28  
IH 370 139 Post Quad 2R 18 4x28  
IH 370 140 Post Quad 2R 18 4x28  
IH 370 141 Post Quad 2R 18 4x28  
IH 370 142 Post Quad 2R 18 4x28  
IH 370 143 Post Quad 2R 18 4x28  
IH 370 144 Post Quad 2R 18 4x28  
IH 370 145 Post Quad 2R 18 4x28  
IH 370 146 Post Quad 2R 18 4x28  
IH 370 147 Post Quad 2R 18 4x28  
IH 370 148 Post Quad 2R 18 4x28  
IH 370 149 Post Quad 2R 18 4x28  
IH 370 150 Post Quad 2R 18 4x28  
IH 370 151 Post Quad 2R 18 4x28  
IH 370 152 Post Quad 2R 18 4x28  
IH 370 153 Post Quad 2R 18 4x28  
IH 370 154 Post Quad 2R 18 4x28  
IH 370 155 Post Quad 2R 18 4x28  
IH 370 156 Post Quad 2R 18 4x28  
IH 370 157 Post Quad 2R 18 4x28  
IH 370 158 Post Quad 2R 18 4x28  
IH 370 159 Post Quad 2R 18 4x28  
IH 370 160 Post Quad 2R 18 4x28  
IH 370 161 Post Quad 2R 18 4x28  
IH 370 162 Post Quad 2R 18 4x28  
IH 370 163 Post Quad 2R 18 4x28  
IH 370 164 Post Quad 2R 18 4x28  
IH 370 165 Post Quad 2R 18 4x28  
IH 370 166 Post Quad 2R 18 4x28  
IH 370 167 Post Quad 2R 18 4x28  
IH 370 168 Post Quad 2R 18 4x28  
IH 370 169 Post Quad 2R 18 4x28  
IH 370 170 Post Quad 2R 18 4x28  
IH 370 171 Post Quad 2R 18 4x28  
IH 370 172 Post Quad 2R 18 4x28  
IH 370 173 Post Quad 2R 18 4x28  
IH 370 174 Post Quad 2R 18 4x28  
IH 370 175 Post Quad 2R 18 4x28  
IH 370 176 Post Quad 2R 18 4x28  
IH 370 177 Post Quad 2R 18 4x28  
IH 370 178 Post Quad 2R 18 4x28  
IH 370 179 Post Quad 2R 18 4x28  
IH 370 180 Post Quad 2R 18 4x28  
IH 370 181 Post Quad 2R 18 4x28  
IH 370 182 Post Quad 2R 18 4x28  
IH 370 183 Post Quad 2R 18 4x28  
IH 370 184 Post Quad 2R 18 4x28  
IH 370 185 Post Quad 2R 18 4x28  
IH 370 186 Post Quad 2R 18 4x28  
IH 370 187 Post Quad 2R 18 4x28  
IH 370 188 Post Quad 2R 18 4x28  
IH 370 189 Post Quad 2R 18 4x28  
IH 370 190 Post Quad 2R 18 4x28  
IH 370 191 Post Quad 2R 18 4x28  
IH 370 192 Post Quad 2R 18 4x28  
IH 370 193 Post Quad 2R 18 4x28  
IH 370 194 Post Quad 2R 18 4x28  
IH 370 195 Post Quad 2R 18 4x28  
IH 370 196 Post Quad 2R 18 4x28  
IH 370 197 Post Quad 2R 18 4x28  
IH 370 198 Post Quad 2R 18 4x28  
IH 370 199 Post Quad 2R 18 4x28  
IH 370 200 Post Quad 2R 18 4x28

### CHISEL PLOWS & FIELD CULTIVATORS

JD 1600 10' Or 12' 3 Pt. Chisel  
Husson 9T Soil Saver w/Hyd Discs  
Einker 11.6 18' Flat and Field Cult - Sharp  
Brillion 16' pull chis  
IH 55 13' pull type chisel  
Glencoe 7T Soil Saver  
Glencoe 7 And 9' Pull Chisels  
(2) IH 55 7' 3 Pt. Chisel  
AC 1200 3 Pt. Field Cult. w/Hyd Wings  
Kasco 9' 3 Pt. 2 Bar Chisel Plow  
JD 12' 3 Pt. Danish Field Cult  
IH 45 13' Pull Field Cultivator  
UFT 10' 3 Pt. Chisel Hi-Clear  
Kewanee 7' 3 Pt. Chisel, Hi-Clear  
IH 13' 3 Pt. Chisel Plow 2 Bar

### HAY EQUIPMENT

JD 327 Baler w/Ejector  
JD 336 Baler w/Ejector  
JD 327 Baler w/Ejector (Kept Inside)  
JD 346 Baler w/Ejector  
NH 851 Round Baler  
JD 1219 Mo/Co, Cut 40 Acres 1 Time  
Case IH 3206 7' 3 Pt. Disc Mower  
(2) NH 451 7' 3 Pt. Sickle Mower  
(2) MF 41 7' 3 Pt. Sickle Mower  
NH 455 7' Pull Type Sickle  
NH 456 7' Pull Type Sickle  
IH 1100 7' Pull Type Sickle  
Triumph 6 Hyd. Drive Side Mt. Sickle, Sharp  
Pequea 710 PTO Tedder  
NI 402 Hay Rake w/Dolly (Sharp)  
NH 55 Hay Rake  
NH 256 Hay Rake  
(2) NH 258 Hay Rake w/Dolly  
(5) Bale Throw Wagon  
2 New Farmco  
Buffalo Valley 36' Elevator New  
New Idea 40' Elevator w/Motor And PTO  
Zimmerman 48' Elevator Sharp

### ROTARY MOWERS

White 281 10 1/2' Offset Disc  
IH 8' Offset Disc- Small Frame  
JD 111 8' Rock Flex Disc (Sharp)  
JD BW 13' Disc  
JD 620 9' Disc Like New  
JD 110 14' Disc  
Bush Hog 12' Cutting Disc  
IH 500 13' Cutting Disc  
Several 3 Pt. Hitch Discs- Call

### BALLS

JD 1219 Mo/Co, Cut 40 Acres 1 Time  
Case IH 3206 7' 3 Pt. Disc Mower  
(2) NH 451 7' 3 Pt. Sickle Mower  
(2) MF 41 7' 3 Pt. Sickle Mower  
NH 455 7' Pull Type Sickle  
NH 456 7' Pull Type Sickle  
IH 1100 7' Pull Type Sickle  
Triumph 6 Hyd. Drive Side Mt. Sickle, Sharp  
Pequea 710 PTO Tedder  
NI 402 Hay Rake w/Dolly (Sharp)  
NH 55 Hay Rake  
NH 256 Hay Rake  
(2) NH 258 Hay Rake w/Dolly  
(5) Bale Throw Wagon  
2 New Farmco  
Buffalo Valley 36' Elevator New  
New Idea 40' Elevator w/Motor And PTO  
Zimmerman 48' Elevator Sharp

### COMBINES

1973 JD 4400 Diesel Combine  
1974 JD 4400 diesel rotary screen  
Combine  
JD 213 Flex Black Reel, Sharp  
(2) JD 213 flex head, yellow reel  
JD 15' grain head  
JD 10' grain head  
6T Lo Profile Header Transport  
JD 443 4RN Corn Head  
JD 244 2RW Corn Head

### ROW CROP CULTIVATORS

Bush Hog 4x30 3 Pt. Cultivator  
Noble 8x36 Hyd. Fold Danish Tine  
Case IH 6x30 Danish Tine (Like New)  
Case IH 183 4x30 Danish Tine (Very Nice)  
Brillion 4x36 Danish Tine  
JD RM 6x30 C-Spring, Rolling Shields  
JD 825 6x30 Danish, Rolling Shields  
Ford