

# ASCS Reminds Foreigners Of AFIDA Requirement

LEESPORT (Berks Co.) — sold agricultural land in Berks County are reminded to report the

transaction to our office within 90 days," said Richard Troutman,

chairman of the Berks County Agricultural Stabilization and Conservation Service (ASCS).

value of the interest held in the agricultural land, he said.

To avoid federal penalties and monetary fines, foreign owners of U.S. agricultural land must report their holdings, acquisitions, dispositions, leases of 10 years or more, and land-use changes to ASCS within 90 days.

For reporting purposes, agricultural land is any tract of more than 10 acres in the aggregate now in farming, ranching, forestry, or timber production. Land used for forestry production is land exceeding 10 acres in which 10 percent is stocked by trees of any size, including land that formerly had such tree cover and will be naturally or artificially regenerated.

"The report is required by the Agricultural Foreign Investment Disclosure Act (AFIDA), which is still in effect," Troutman said. Foreign investors are required to file a report if all or part of any agricultural land is sold, or the title is transferred to another person.

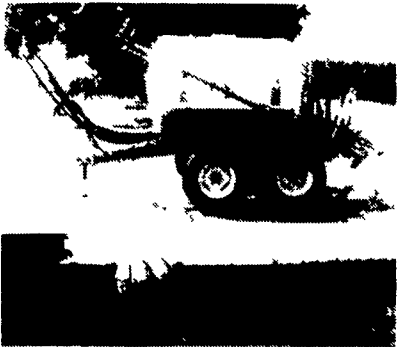
"This includes land in agricultural use when purchased, as well as land later converted to agricultural use," the ASCS official said. County government offices, realtors, attorneys and others involved in real estate transactions are asked to notify the foreign investor of these reporting requirements.

Failure to file the AFIDA report could result in a civil penalty of up to 25 percent of the fair market



**Your Complete Headquarters For Sprayers And Parts**

**HEAVY DUTY SPRAYERS BUILT STRONG TO PERFORM TOUGH**



- 200, 300 & 500 Gal. Trailer Models
- 110, 150, 200 & 300 Gal. 3 Pt. Hitch Models

**FEATURES AVAILABLE:**

- 30', 35' and 40' Booms
- 30' & 45' All Hydraulic Folding Boom
- *Quick Tight* No Drip Nozzles
- Independent Boom Suspension Eliminates All Boom Bouncing.

**At Last! A Reliable, New Stainless Steel AG-CHEM FOAM MARKER**

Reg. \$925.00 **SPECIAL \$830.00**

Each Foam Marker Contains:

- Mixing chamber for each boom.
- Electric harness for in-cab controls (on-off/left-right).
- Drop hoses for each boom
- Hose for boom lengths up to 47'.

The Ag-Chem foam marker offers you efficient operation with a 12 volt compressor that draws only 9 amps Independent left and right boom markers can be controlled from the cab for on-the-go operation That lets you operate either boom marker for precise, economical foam placement And best of all the Ag-Chem Foam Marker produces a dense foam within seconds of agitation, and has a dependable output that can be adjusted for volume



**TERRA-TRONICS I**

**Electronic Monitor Measures Working Acres And Ground Speed**

- Easy-to-see digital readout
- Easy to-operate touch sensitive keys
- Operates with any field implement requiring acre measurement - pulled, mounted, or self-propelled sprayers combines etc



Reg. \$224.55 **SPECIAL \$199.00**

Handy Half Gallon **AG FOAM**



Reg. \$10.20 **SPECIAL \$9.25**

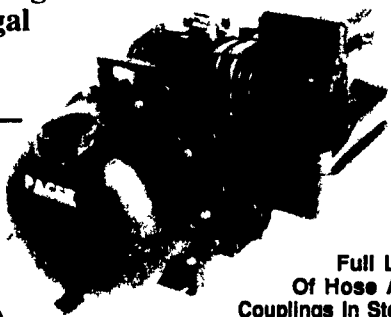
**FOAM DYE** For Higher Visibility Foam **SPECIAL \$12.50**

**Self-Priming PACER PUMPS**

**Centrifugal Pumps**

- 3 H.P. 'S' Series 1 1/2" Or 2" Ports

Reg. \$214.50 **SPECIAL \$187.59**



Full Line Of Hose And Couplings In Stock!

**Features:**

- Self-priming to 20 feet
- Total heads to 120 feet
- Capabilities to 200 U.S. GPM
- Built in check valve
- Equipped with 1 1/2" or 2" female threaded connections, NPT

• 5 H.P. 'S' Series 2" Ports Reg. \$260.00 **SPECIAL \$227.50**

• 5 H.P. 'S' Series With I/C Briggs Engine 2" Ports Reg. \$352.00 **SPECIAL \$308.00**

• 5 H.P. 'S' Series With Honda Engine, 2" Ports Reg. \$468.50 **SPECIAL \$409.94** With Cage **\$459.38**

• 'S' Series Pedestal Pump Only 1 1/2" or 2" - Reg. \$136.00 ... **SPECIAL \$119.00**

**Raven Tough Polyethylene Tanks**



- SPRAYER TANKS - ALL SIZES AVAILABLE FROM
- STATIONARY TANKS For Liquid Fertilizer Storage 25 GAL. to 2500 GAL.

We Also Stock A Complete Line Of:

**Tejet** Sprayer Nozzles And Accessories

**Hyprow** Pumps And Accessories

**PACER PUMPS**

- Sprayer Hose
- Ball Valves
- Nylon Fittings
- Poly Tanks

**CLOSED FOR ASCENSION DAY MAY 12, 1994**

**PAUL B. ZIMMERMAN, INC.**

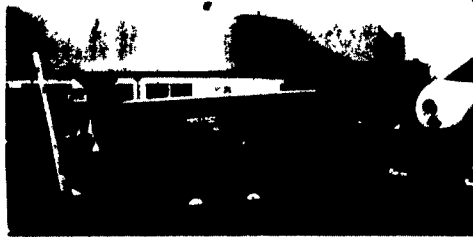
50 Woodcomer Rd., Litz, PA 17543  
1 Mile West of Ephrata  
(717) 738-7350

HOURS:  
Mon., Thurs., Fri. 7-8:30  
Tues., Wed. 7-5:30  
Sat. 7-4:00

• HARDWARE • FARM SUPPLIES •

**A LESSON WELL LEARNED... LANCASTER FARMING'S CLASSIFIED ADS GET RESULTS!**

**SOYBEAN ROASTING ON YOUR FARM**



**FULL-FAT ROASTED SOYBEANS For Maximum Feeding Value**

- High energy, by-pass protein and palatability
- Toxic enzymes and molds destroyed
- Peak performance with retained oil and lecithin
- Improved Total Digestible Nutrients
- Ultimate rich peanutty flavor and aroma
- Dired as roasted
- Roast own grown beans - Avoid trucking and docking
- Economical and efficient for lower feed costs
- Ready for use or storage

Custom Roasting in PA and Surrounding States

David N. Groff  
RD 3 Lewisburg, PA  
(717) 568-1420

Schnupp's Grain Roasting, Inc.  
RD 6 Lebanon, PA  
1-800-452-4004  
717-865-8611

Horst Grain Roasting  
3040 Penns Grove Rd.  
Lincoln Univ., PA 19352  
(Chester Co.)  
(610) 869-8634

Roast-M-Matic Grain Roasting Sales-Service Custom Work  
Roast-Cool Unit Available

**SANDBLASTING AND SPRAY PAINTING WITH AERIAL LADDER EQUIPMENT**



Farm Buildings — Feed Mills  
Commercial - Industrial

**HENRY K. FISHER, INC.**  
667 Hartman Station Road  
Lancaster, PA 17601  
717-393-6530

**CONTRACTS**

**AVAILABLE IMMEDIATELY**

Supplement Your Present Farm Income

Commercial Layer and Pullet Contracts Available  
Good Long Term Investment



AUTHORIZED **Big Dutchman.** DISTRIBUTOR



**HERSHEY EQUIPMENT CO.**

255 Plane Tree Drive  
Lancaster, PA 17603  
(717) 393-5807

IF IT'S WORTH YOUR INVESTMENT, TRUST IT TO HERSHEY