

**Kutztown Produce Auction**

Fleetwood, PA  
 May 3 and 5  
 Sat. Hay and Straw at 9:00 a.m. followed by produce  
 Report Supplied by Auction  
 ASPARAGUS: .60-1.30 LB.  
 RHUBARB: .30-.65 LB.  
 TOMATOES: HYDROPONIC 1.60 LB.  
 SPRING ONIONS: .45-.70 BUNCH.  
 RED POTATOES: 2.50-3.50 20 LBS.  
 BEDDING PLANTS: 5.00-9.50 FLAT.  
 GERANIUMS: 1.10-3.60 POT.  
 MARTHA WASHINGTON 2.50-5.00 POT.  
 HANGING BASKETS: 3.00-11.50.  
 FUCHSIA: 7.00-7.75.  
 MUMS: 2.90-4.50 POT.  
 PERENNIALS: 1.05-2.50 POT.  
 RANUNCULUS: 1.75 POT.  
 VEGETABLE PLANTS: 3.00-8.50 FLAT.  
 VIOLETS: 1.00-1.20 POT.  
 FLOWERS AND PRODUCE EVERY TUESDAY AND THURSDAYS AT 10:30. GENERAL CONSIGNMENT AUCTION TUESDAY FOLLOWING FLOWERS AND PRODUCE.

**Lebanon Valley Livestock**

Fredericksburg, PA  
 Tuesday, May 3, 1994  
 Report supplied by Auction  
 CALVES: 116 HEAD. VEAL CALVES CHOICE 80-110 LB. 50.00-62.00; GOOD 75-100 LBS. 40.00-50.00; STANDARD AND GOOD 55.00-85.00 LBS. 30.00-45.00; #1 FARM BULL CALVES 100-120 LBS. 137.00-152.00; #2 100-115 LBS. 120.00-135.00; #1 HEIFER CALVES 95-100 LBS. 175.00-217.00; #2 85-145 LBS. 126.00-152.00; BEEF X BULL HEIFER CALVES 75-100 LBS. 120.00-160.00.  
 STEERS: 23 HEAD. CHOICE 1100-1230 LBS. 68.00-69.75; SELECT 1000-1170 LBS. 64.75-68.00; STANDARD 925-1210 LBS. 62.75-64.75;

HOLSTEIN STEERS CHOICE 1150-1245 LBS. 62.75-64.25; SELECT 1100-1250 LBS. 58.00-61.00; STANDARD 1245-1615 LBS. 61.75; HEIFERS, CHOICE HOLSTEIN 1205-1275 LBS. 67.75-70.00; SELECT 1075-1160 LBS. 66.00-68.00; STANDARDS 970-1035 62.75-64.75.  
 COWS: 69 HEAD. BREAKING UTILITY 47.00-50.25; HIGH YIELDING 51.00; CUTTERS AND BONING UTILITIES 44.00-47.00; CANNERS AND LOW CUTTERS 40.00-44.50; SHELLS DOWN TO 32.50.  
 BULLS: 9 HEAD. YG#1 1615-1875 LBS. 56.00-60.25; YG#2 1050-1435 LBS. 54.75-56.75.  
 FEEDER CATTLE: 8 HEAD. 300-410 LBS. 93.00; HOLSTEIN 650-765 LBS. 57.50-61.50; STOCK BULL 54.50.  
 HOGS: 91 HEAD. #1&2 245-260 LBS. 41.10-42.60; #1&3 210-215 LBS. 40.85-41.10.  
 SOWS: 11 HEAD. 465 LBS. 34.50-38.50.  
 BOARS: 1 HEAD. 210 LBS. 28.50.  
 LAMBS: 14 HEAD. CHOICE 30-60 LBS. 50.00-65.00; 100 LBS. 43.00.

**Dewart Livestock Auction**

DEWART, PA  
 May 2, 1994  
 CATTLE 142. PDA. STEERS: couple Choice 68.00 & 70.75, few Select 58.00-65.00. HOLSTEINS: few Choice 65.00-66.00, Select 60.75-64.00, few Standard 56.50-58.00. COWS: Breaking Utility and Commercial 46.00-49.00, Cutter and Boning Utility 45.00-48.75, couple 49.75, Canner and Low Cutter 40.00-44.50. Shells down to 38.00. BULLS: Yield Grade No 1 1050/2360 lbs. 55.00-57.00. FEEDER CATTLE: Steers & Bulls: few Large Frame No. 2 310/410 lbs. 72.00-84.00; Heifers: few Medium Frame No. 1 450/815 lbs. 62.00-70.00, few Large Frame No. 2 450/620 lbs. 80.00-106.00.

CALVES 134. FARM CALVES: No. 1 90/125 lbs. Holstein bulls 125.00-165.00, No. 2 85/120 lbs. 100.00-125.00, few down 72.50; No. 1 Holstein heifers 85/120 lbs. 185.00-242.50. Few Beef cross bulls and heifers 70/100 lbs. 185.00-230.00, couple 100.00.  
 HOGS 35. BARROWS & GILTS: few US 1-2 250/260 lbs 40.50-41.50, one 1-3 205 lbs. 37.00. SOWS: few US 1-3 300/410 lbs. 32.50-32.75.  
 FEEDER PIGS 22. Few US 1-3 18/25 lbs. 20.00-27.00. --- per head.  
 SHEEP 0. NO MARKET TEST!  
 GOATS 11. Few Medium & Large 25.00-47.50. --- per head.

**Keisters Livestock Auction**

MIDDLEBURG, PA  
 May 3, 1994  
 CATTLE 428. PDA. .sl. steers mostly 2.00 lower, cows about steady. STEERS: few High Choice and Prime 72.25-73.50, Choice 1100/1450 lbs. 68.00-72.75, few to 73.50, Select 62.50-68.50. HOLSTEINS: Choice 1100/1400 lbs. 61.00-63.50, couple 65.00, Select 58.00-62.00, Standard 51.50-56.00. HEIFERS: Choice 1000/1300 lbs. 65.50-69.50, couple to 71.75, Select 59.50-65.00, few Select and Choice Holsteins 60.00-62.50. COWS: Breaking Utility and Commercial 46.00-49.75, Cutter and Bon. Utility 45.00-48.75, Canner and Low Cutter 38.50-44.75. Shells down to 32.00. BULLOCKS: few Select and Choice 62.00-67.75. BULLS: Yield Grade No. 1 1050/1850 lbs. 53.25-65.75, few No. 2 1350/1950 lbs. 50.00-53.00. FEEDER CATTLE: Steers: Medium Frame No. 1 300/700 lbs. 74.00-90.00, couple to 105.00, Large Frame No. 2 400/875 lbs. Holsteins 57.00-80.00; Heifers: Medium Frame No. 1 450/750 lbs. 59.00-71.00; Bulls: Large and Medium No. 1 400/800 lbs. 60.00-77.00.  
 CALVES 181. VEALERS: Standard and Good 75/100 lbs. 65.00-85.00. RETURNED TO FARM: No. 1 Holstein bulls 90/125 lbs. 125.00-145.00, No. 2 80/120 lbs. 80.00-120.00; No. 1 Holstein heifers 85/115 lbs. 195.00-250.00, No. 2

70/100 lbs. 112.50-180.00, couple down to 80.00. Beef cross bulls and heifers 75/100 lbs. 105.00-182.50.  
 HOGS 429. (5/02 & 5/03/94). Bulk of supply sold on Monday and reported by auction. BARROWS AND GILTS: US 1 230/250 lbs. 43.50-44.50. US 1-2 220/250 lbs. 41.75-43.00. US 2-3 210/290 lbs. 38.00-41.50. SOWS: US 1-3 400/525 lbs. 32.50-38.50, 300/525 lbs. 30.00-34.00. BOARS: 220/580 lbs. 26.50-30.00.  
 FEEDER PIGS 118. US 1-3 25/45 lbs. 25.00-40.00. --- per head.  
 SHEEP 105. Spring sl. lambs: few High Choice and Prime 10/25 lbs. 140.00-220.00, Choice 35/75 lbs. 75.00-100.00. Slaughter sheep: 16.00-46.00 mostly 20.00-30.00.  
 GOATS 12. Few Large 43.00-84.00, few Small Kids 15.00-28.00. --- per head.

**Okla. City Feeder Cattle**

OKLAHOMA CITY  
 WEDNESDAY MAY 4, 1994  
 Compared to last week: Feeder steers \$1.00-\$3.00 lower. Feeder heifers weak to \$2.00 lower. Few stocker cattle \$1.00-\$2.00 lower. Demand moderate. Supply continues to be cattle off graze-out wheat. Wheat has matured as much as two weeks early due to dry conditions in late winter and early spring. Weigh-ups gaunt to average and greatly improved for buyers from last week. Flesh conditions also positive for buyers with many steers now in average flesh. Buyers very selective with heavy fleshed cattle at full declines. Quality plain to average, few attractive. Receipts reduced by heavy rains Friday thru Monday. Slaughter cows \$.50- \$1.00 lower. Slaughter bulls \$2.00 higher. 329 cows and bulls sold with over 2/3rds of these stock cows or pairs. Receipts this week 9,325; last week 13,599; last year 8,999. Supply consisted of 90 percent yearlings over 600 lbs.; 6 percent stockers and calves under 600 lbs.; 4 percent cows and bulls. Prices follow with weighted average weight and price in parenthesis.  
 Feeder Steers: Medium and Large

Frame 1: 500-550 lbs. (\$29 lbs.) \$96.25-\$105.00 (\$101.02); 550-600 lbs. (\$61 lbs.) \$88.50-\$94.25 (\$91.49); 600-700 lb. stockers (650 lbs.) \$84.50-\$89.50 (\$85.80); 650-700 lb. feeders (677 lbs.) \$79.75-\$85.50 (\$81.76); 700-800 lbs. (750 lbs.) \$76.50-\$80.50, several thin and gaunt \$80.50-\$83.75 (\$78.96); 800-850 lbs. (826 lbs.) \$73.50-\$77.50 (\$75.80); 850-900 lbs. (876 lbs.) \$71.00-\$74.75 (\$73.20); 900-950 lbs. (922 lbs.) \$70.00-\$73.50 (\$71.61); 950-1000 lbs. (965 lbs.) \$67.50-\$71.25 (\$70.11). Holstein Steers: Large Frame 2: 700-800 lbs. \$56.00-\$60.00; 875 lbs. \$54.35; 925 lbs. \$50.25.

Feeder Heifers: Medium and Large Frame 1: 500-550 lbs. (\$21 lbs.) \$83.50-\$85.75 (\$84.94); 550-600 lbs. (\$87 lbs.) \$79.00-\$83.50 (\$80.57); 600-650 lbs. (625 lbs.) \$76.00-\$81.75 (\$78.04); 650-700 lbs. (674 lbs.) \$73.00-\$77.75 (\$75.51); 700-800 lbs. (750 lbs.) \$72.75-\$74.75 (\$73.40); 800-900 lbs. (850 lbs.) \$68.00-\$70.25 (\$68.80).

Slaughter Cows: Cutter, Boning and Breaking Utility, Y.G. 1-4 average dressing \$44.50-\$47.25; high dressing \$48.00-\$51.00, very high dressing \$51.75-\$53.75.

Slaughter Bulls: Y.G. 1, 1300-1875 lbs. few average dressing \$61.00- \$61.50; high dressing \$64.50-\$66.50; low dressing \$55.50-\$58.50.

Replacement Cows: Pretested for Bangs, pregnancy, and age: Medium and Large Frame 1 average and high quality: 2-5 year old 1000-1250 lbs. 3-8 months bred \$820.00-\$850.00 per head 6-7 year old 950-1200 lbs. 5-8 months bred \$650.00-\$745.00 per head

Pairs: Medium and Large Frame 1-2 pkg 3 year old 1000 lb. Black Limousin cows with 200-250 lb. calves \$1000.00 per pair, 3-6 year old 850-1050 lb. cows with 100-325 lb. calves \$890.00-\$935.00 per pair; 7-8 year old 950-1150 lb. cows with 125-250 lb. calves \$800.00-\$850.00 per pair.

**FARMER BOY AG. INC.**

410 E. LINCOLN AVE. MYERSTOWN, PA 17067  
 CALL TODAY 717-866-7565



Full Line Of Parts In Stock For Your Poultry And Hog Needs

Hours: M-F 7:00-5:00; Sat. 7:30-11:30

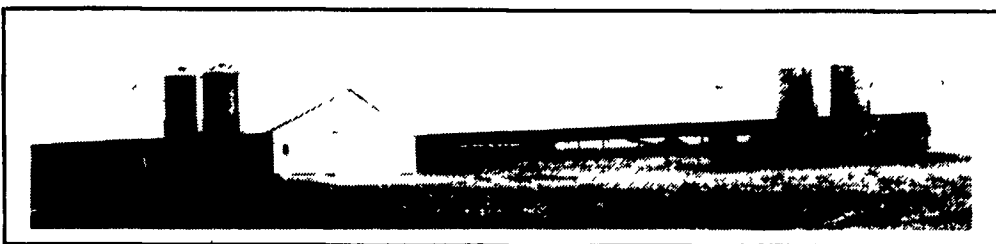
Check Our Warehouse Prices

WE SHIP UPS



5-7

**ADD INCOME TO YOUR FARM**  
**Poultry & Hog Contracts Available**



This 2-stage facility features a 50'x215' brooder building and a 50'x520' growout building.

FARMER BOY AG. Swine Stabling

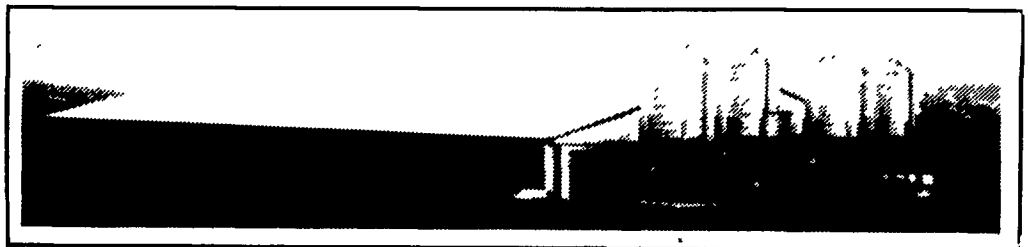


BOSS HOG



Heating Systems

Woven Wire Flooring



This Hog Finishing Facility features 2 Rooms of 1,000 head each



AGRI-PLASTICS Swine Feeding & Confinement Equipment



Stainless Steel Hog Feeders

**EXISTING PRODUCERS ARE EXPERIENCING THE FOLLOWING:**

- EXCELLENT SUPPORT SERVICE BY CONTRACT COMPANY
- EXCELLENT HEALTH & DISEASE PROGRAM SUPPORT

**CONTACT FARMER BOY AG...YOUR PROFESSIONAL COMPANY**

- CUSTOM DESIGN • NUTRIENT MANAGEMENT PLANNING
- ASSISTANCE IN PLANNING YOUR FINANCING
- SERVICING BUILDING PERMITS & INFORMATION REQUIREMENTS