

**32 MISCELLANEOUS**

1300 foot of 6 foot chain link fence with 1 set of 14 foot gates, (1) set of 20 foot gates with 15 foot extensions with electric controls and opener. (1) 14 foot gate, (1) 3 foot gate. Buyer to remove. \$3500. 717-932-9900.

18" Rotary table, \$795; Cross slide table 6"x12", \$150. 814-344-8447 after 4PM Cambria Co.

200 amp Miller-matic mig-welder w/cart and tank, excellent condition, \$1,200 OBO Call after 6pm, (410)648-5725.

20HP 2-phase hydraulic unit w/controls, \$350; 5HP 3-phase hydraulic unit, \$250, 15HP phase converter \$750. 908-453-2088.

5 speed trans from '81 GMC 6500 series, low miles, asking \$250; various barn beams up to 50'; approx 10 pole barn poles \$20 each; (6) 50lb. boxes sheet rock nails, \$10/each. 2 1 5 / 9 3 2 - 3 9 7 7 . 215/932-4513 Chester Co.

Automatic copy lathe, like new, hydraulic or electric operated, extra heavy duty, best offer David Swarey, RD#3, Meyersdale, PA 15552

BOLTS Various sizes, grade 5, large or small quantity, \$.80/lb. (717)733-7968.

Farm Toys-Collector Series, Show Tractors, Pedal Tractors, Trucks-for sale at all times. Visit our large display during business hours Wengers Farm Machinery, Inc., 251 S. Race St, Myerstown, PA 717/866-2130.

FISHING TACKLE WANTED: Old reels, wooden lures, rods, nets, advertisements. 610-660-9995.

For Sale: Perflex EC-65 Pool Filter, Kreepy Krauly Pool Cleaner, Versa 185B Pool Heater, Like New. (717)225-4442. York County.

Horse Harness to be sold at Dffenbach Auction, May 13, 1994. For sale at my home: Butcher Stove (cow-heads), restored, complete thermopane, Patio Sliding Doors, 6x8, white, Hand Blown Window Panes. Chester County.

Large steel cage w/door 30x 29x 45; truck insert b/d/ table, BO. (610)286-0263.

"LINCWELDER" 250 Amp, PC 3 Phase, Brand New. \$500 (301)862-4260.

**34 AUTOS**

1990 GMC Safari conversion mini van, loaded, best offer over \$9,500. (610)285-2611.

'84 Plymouth Horizon, 4 cyl, automatic, PS, PB, runs good, new tires, new brakes. 717-922-4294.

**35 TRUCKS & TRAILERS**

24' Custom Made Aluminum Flatbed (717)259-7823.

32' STECO DUMP TRAILER; 28' TRAILWAY DUMP TRAILER. BOTH GOOD CONDITION 814-793-3874.

69 Ford 950 cabover, 34,000 GVW, air brakes, new rubber, w/Stoltzfus lime spreader, \$2800. 717/742-2712.

'73 Mack Tandem w/ Wetline, 297 Engine w/ Recent Engine Overhaul, \$5900; MGS tandem trailer, 8x16, like new, \$1200. (609)935-0348.

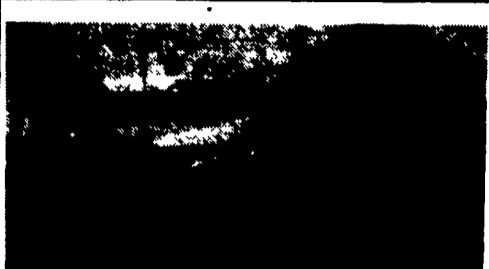
**32 MISCELLANEOUS**

**LIVE GAME FISH** Fingerlings and Adults, Large and Small Mouth Bass, Spotted and Rock Bass, Bream Crappies, Trout, Channel Cats, Bullheads, Walleyes, Perch, Minnows, Northern, Pickerel, Muskies, Red Gills, Mullet, Carp, Eels, Turtles, Frogs, Israel Carp. Also Aquatic Plants and Water Lilies. COLORFUL CATALOG \$2.00.

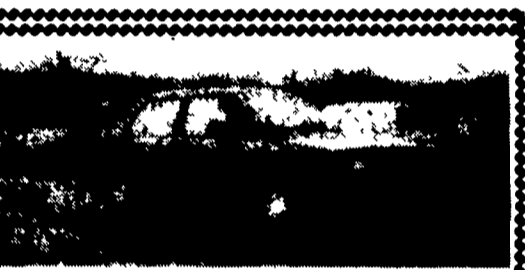


Truck, Air and Parcel Post Delivery.  
ZETTS FISH HATCHERIES  
DRIFTING, PENNA. 16834  
Phone: 814-345-8357

**34 AUTOS**



**1984 DODGE CARAVAN**  
4 Cyl., 5 Speed, PS, PB, Air Cond., AM-FM Stereo, 7 Passenger, 1-Owner Trade  
**Only \$2,995**  
Countryside Auto Sales  
Office (717) 664-2170  
Home (717) 865-3488



**1988 VW JETTA GL**  
F.I. 4 Cyl., 5 Speed, PS, PB, AM-FM Cass., Air Cond., Grey Cloth Int., Blk Finish 58,000 Miles, Good Condition  
**Only \$5,800**  
Countryside Auto Sales  
Office (717) 664-2170  
Home (717) 865-3488

**35 TRUCKS & TRAILERS**

**TRUCKS**

- 89 F250 4x4 SUPER CAB XLT A.C. 351 V.8 A.O.D.
- 92 DODGE DAKOTA Sport V.6 A.C. 5 Spd
- 89 F250 XLT 4x4 351 V.8 AT A.C. 7 Tone
- 89 DODGE D250 Turbo Diesel AT A.C.
- 89 GMC 1500 4X4 SLE A.C. AT V.8
- 91 RANGER 1X4 SUPER CAB V.6 A.O.D. A.C. XLT
- 92 F150 1x1 Nite V.8 5 Spd. A.C.
- 92 RANGER XLT 4X2 V.6 A.O.D. A.C.
- 90 RANGER XLT A.C. V.6 A.O.D. 19,000 Miles
- 91 F150 4X4 XLT V.8 5 Spd. A.C.

**PRE-OWNED CARS**

- 91 CHEVY CAMARO RS V.8 5 Spd. A.C.
- 90 TEMPO ALL-WHEEL DRIVE 2.3L AT A.C.
- 93 T BIRD LX V.6 A.O.D. A.C. Only 11,900 Miles
- 91 T BIRD SUPER COUPE A.O.D. A.C. Loaded 1 Owner
- 93 TAURUS GL SW V.6 A.O.D. A.C. Power Equipment
- 89 PROBE LX A.C. A.O.D. Ready for Spring
- 92 MAZDA FAX 6 A.C. 5 Spd. 31,000 Miles
- 90 MUSTANG LX 2.3L A.C. A.O.D. 29,000 Miles
- 90 TAURUS GL SDI 3.0L V.6 A.O.D. A.C.
- 91 LINCOLN CONTINENTAL Fully Equipped. Only 15,000 Miles.

**MPV'S**

- 92 EXPLORER 1 DR XLT 4.0L A.C. A.O.D. 21,000 Miles
- 91 EXPLORER XLT 1 DR A.O.D. A.C.
- 91 BRONCO XLT A.C. 351 V.8 A.O.D. 12,000 Miles
- 91 EXPLORER 1 DR XLT A.C. 5 Spd
- 92 JEEP WRANGLER 6 Cyl. 5 Spd. Soft Top
- 90 ALROSTAR EXTENDED Ledge Bumper Dual A.C. & More
- 89 JEEP CHEVROLET 1 Dr AT A.C.
- 93 DODGE GRAND CARAVAN SE A.C. 10,000 Miles
- 93 PLYMOUTH GR. VOYAGER V.6 A.C. SE 17,000 Miles
- 92 WRANGLER 6 Cyl. 5 Spd. Soft Top

**ENGLE-RISSINGER AUTO GROUP**

Rt. 147 Just North of Halifax  
Halifax, PA 17032  
The Calls On Us 1-800-242-8075  
1-717-896-3421

**TRUCK CRAFT**



**PICKUP INSERT DUMPER**  
For FREE brochure, call toll free 24 hr.  
1-800-755-3867

**WHY?**

...is Your Competition Driving Isuzu Trucks?

**Less Down Time & Increased Profits!**

Isn't It Time For An Isuzu For Your Business?

**1994 ISUZU NPR**

11,050 GVW, diesel, auto trans, AM/FM cassette, power steering & brakes, tilt steering wheel, 33 gal fuel tank #3148



**\$19,992**

Plus Tax & Tags

**717-354-4901**  
**New Holland**  
**FORD • ISUZU TRUCK**  
Rte 23, New Holland, PA

**WILLIAM H. WESSELS USED CARS**

811 Route 15 Dillsburg, PA  
1-800-440-4433 1-717-432-2918  
Notary Public - Temporary Tags



**'91 CHEV C-10 CARGO VAN**  
4-3-V-6, Auto, PS  
63,740 Miles  
**\$7,900**



**'90 FORD 15 PASSENGER VAN**  
V-8, Auto, AC  
73,208 Miles  
**\$8,900**



**'90 FORD F-350 4X4 CREW CAB**  
w/Enclosed Utility Box - 460 EFT Auto, PS & Air High Miles  
**\$13,900**



**'87 CHEV C-30 DUMP**  
350 V-8, 4 SPEED  
**\$10,900**



**'85 CHEV CAB**  
Diesel, Auto, Dump Stake  
**\$7,900**



**'81 IH DUMP**  
9. Liter, Auto; PS  
**\$8,700**



**'86 FORD F-350**  
6 Cyl; Auto 60" C to A As Trade  
**\$2,990**



**'86 FORD E-350**  
14' Cargo Van, 460 V-8 Auto, 133,206 Miles  
**\$5,900**

**SUNDAY SHOPPER WELCOME NO SALES**

ALL VEHICLES PRICED & UNLOCKED FOR YOUR CONVENIENCE

**WILLIAM H. WESSELS USED CARS**

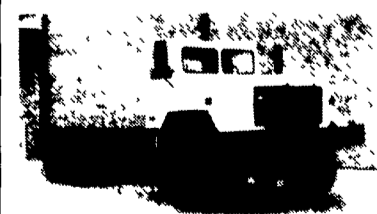
811 Route 15 Dillsburg, PA  
1-800-440-4433 1-717-432-2918  
Notary Public - Temporary Tags

**ARMY TRUCK PARTS**

CHAMBERSBURG, PA

SERVING THE NORTHEAST OVER 40 YEARS

THE NATION'S LARGEST ARMY TRUCK and PARTS DEALER



GMC - REO - 5 TON  
DODGE 3/4 TON  
KAISER - JEEP 1 1/4 TON  
ALL 6x6 & 4x4

ENGINES  
TRANSMISSIONS  
TRANSFER CASES  
DRIVE TRAIN  
CAB KITS

Request Our Free Army Truck Parts Catalog

**MEMPHIS EQUIPMENT**

821 Lincoln Way West  
P.O. Box M  
Chambersburg, PA 17201

717/263-4194 FAX 717/263-4555

ART WELLER, GEN. MGR.  
MARK SIPES, PARTS MGR.