

Revised Fungicide Label Gives Growers Options

GREENSBORO, N.C. — Tilt® fungicide now joins corn growers in the battle against leaf blight and rust. Earlier this month, the Environmental Protection Agency (EPA) approved the addition of seed and sweet corn to the fungicide's label, giving growers

another option to control disease. Field corn and popcorn also were added to the Tilt label.

"The systemic action of Tilt means no wash off," said Eric Kuhn, Tilt product manager. "Since Tilt is absorbed by the plant, it provides longer-lasting

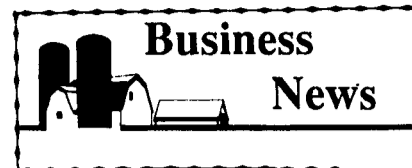
protection and superior control, which maximizes yields and seed quality. And Tilt is not only a protectant, it can stop disease after infection, too."

Below are the recommended treatments for each disease.

• **Northern and southern leaf blight.** For control of leaf blight caused by *Helminthosporium maydis*, *H. turcicum*, and *H. carbonum*, two- to four-ounce-per-acre applications of Tilt should be made when disease symptoms first appear. Applications should continue on a seven- to 14-day schedule.

• **Rusts.** When rust pustules caused by *Puccinia* spp. first appear, a four-ounce-per-acre application of the fungicide should be made with identical applications made on seven- to 14-day intervals.

Do not apply more than 16 ounces of Tilt per season. Always read and follow label directions.



Woods Equipment Introduces Cutters

OREGON, Ill. — Two new, dependable rigid cutters engineered for superior cut quality, durability, and value are the latest additions to Woods Equipment Company's line of high-performance tractor-powered attachments.

The Woods Model 3168 14-foot cutter, ideal for heavy-duty row crop shredding, features a tip speed of 15,560 feet-per-minute (fpm), ensuring excellent, dependable cut quality.

The Woods 3168 is also available with an optional shredder kit

of seven stationary knives, providing 19 cutting edges. This, in combination with the baffle design on the underside of the mowing deck, maximizes the shredding action and ensures neat, even distribution of the cut material.

The Woods Model 2126 (15,925 fpm), with a 10-1/2 foot cutting swath, efficiently tackles general purpose mowing, including weeds, grass, brush, and orchard and pasture maintenance, in addition to row-crop mowing. The cutter is designed to cut brush up to two-and-a-half inches thick.

Product Advisory Council Plans Badger Northland's Future

KAUKAUNA, Wis. — When Badger Northland recently assembled its 1994 Product Advisory Council, John Kreider, Jr. of Show-Ease Badger, Lancaster, Pa., was there.

Kreider starts a three-year period as a member of the council. Kreider is one of nine dealers from North America asked to serve on the council.

"The Product Advisory Council's input is helping us decide what products Badger will market 10 and 15 years in the future," said

Stan West, Badger Northland vice president of sales and marketing. "They have accepted the responsibility to help us prioritizing development projects and to make sure that we respond quickly to the needs of farmers throughout North America."

Three new members will be added to the advisory council each year. The rotation of one third of the council will ensure that Badger and its dealers have a shared vision of the future.

FARMER BOY AG. INC.

LUMBER & BUILDING MATERIALS

Call or Stop in & See Our Complete Line of Products



410 Lincoln Ave. Myerstown (Lebanon Co.) PA 17067
717-866-7565

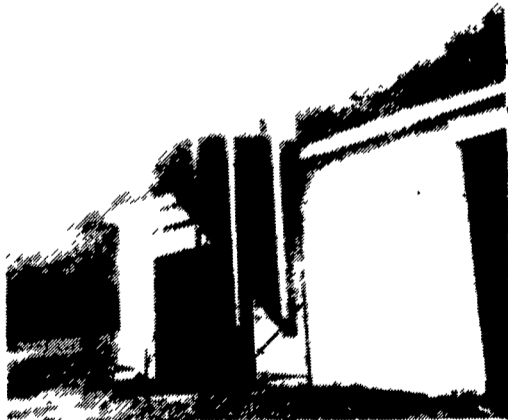
KEN CLUGSTON
(717) 665-6775

CRAFT-BILT CONSTRUCTION INC.

FARM-HOME BUILDING
1242 Breneman Road
MANHEIM, PA 17545
PH: (717) 665-4372

BUILDING & REMODELING FOR—
DAIRY RESIDENTIAL
SWINE POLE BUILDINGS
BEEF STORAGE

CUSTOM MADE FEED BINS FOR FARMS — FEED MILLS



- Made of 13 gauge Steel
- All welded seams
- Gravity Flow or Auger

Free Estimates

Also - Steel Roof Trusses for Buildings - Portable Hog Buildings - Bucket Elevators - Grain Augers Distributors - Flow Pipes & Accessories

We Sell, Service & Install

Ph: 717-345-3724

Fax: 717-345-2294

STOLTZFUS WELDING SHOP

Owner - Samuel P. Stoltzfus

RD 3, Box 331

Pine Grove, PA 17963

Thrifty King™ ENERGY FREE UNITS

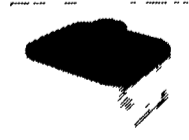


Model CT1 Cattle One Drink
Part No. 16271
28" x 20" x 12"
Capacity: 50 cattle

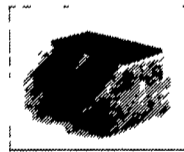
Model CT2 Cattle Two Drink
Part No. 16229
42" x 24" x 19"
Capacity: 100 cattle



Electric-free fountains that live up to the Ritchie® name.



Model CT4 Cattle Four Drink
Part No. 16272
42" x 25" x 12"
Capacity: 200 cattle



Model HG2 Hog Two Drink/One Side
Part No. 16298
31 1/2" x 24 1/2" x 8"
Capacity: 80 hogs



Model HG2 Hog Two Drink
Part No. 16259
31 1/2" x 20" x 8"
Capacity: 80 hogs



Model HG4 Hog Four Drink
Part No. 16258
31 1/2" x 31 1/2" x 8"
Capacity: 160 hogs

RELAX... Ritchie® WATERS 'EM RIGHT

RYDER SUPPLY CO.

P.O. Box 219
Chambersburg, PA 17201-0219
Phone 717-263-9111

ALL UNITS IN STOCK

ALSO AVAILABLE

Ritchie WATER THAT WON'T QUIT.



THE CHEAPEST THING TO GIVE YOUR COWS... WATER

FOR MORE MILK!!!

Give your cows lots of water from Ritchie Fountains

Water Is Cheaper Than Feed!



Recapping Your Ritchie Fountains Makes Sense... And Saves Money!



3 Cattle Fountain
Designed for hog service in small pens. Waters up to 100 head.
Part No. 11257
17" x 28" x 26" high
Electric (1286W CSA approved) or Gas



2AC Multi-Purpose Fountain
Waters calves, sheep and goats. Perfect for box stalls, small lots or fences.
Waters up to 40 cattle/100 calves.
Part No. 12295
10" x 24" x 18" high
Electric (1286W CSA approved)