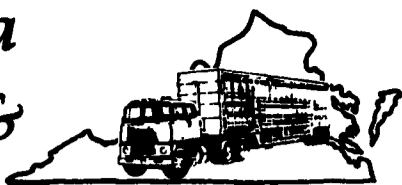


Virginia Cattle & Hogs



North Virginia

RICHMOND VA
APRIL 28, 1994

SOUTHSIDE (BLACKSTONE) VIRGINIA ON 27-APR-94 PRICES BASED ON IN WEIGHTS.

SLAUGHTER CATTLE 49 HEAD
SLAUGHTER COWS 45 HEAD
COWS BREAKING UTILITY & COMMERCIAL 2-4 39.50 - 43.00 HIGH DRESSING 43.00 - 46.00 CUTTER & BONING UTILITY 1-3 35.00 - 41. HIGH DRESSING 40.00 - 43.50 CANNER AND LOW CUTTER 1-2 33.75 - 36.00

SLAUGHTER BULLS 4 HEAD BULLS Y.G. 1-2, 1600 LBS. & OVER 56.00 - 60.00

LAMBS TOTAL RECEIPTS 18 HEAD SLAUGHTER EWES & RAMS 18 HEAD EWES UTILITY & GOOD 1-3 19.00 - 25.00

FEEDER CATTLE 244 HEAD STEERS 72 HEAD MED&LARGE 1 SMALL 1 MED&LARGE 2 300-400 - 93.00 - 94.00 89.00 - 93.00 400-500 85.00 - 93.50 85.00 - 88.50 85.00 - 97.50 500-600 90.00 - 95.00 - 80.50 - 89.50 600-700 83.50 - 78.00 - 81.50

HOLSTEIN 13 HEAD STEER MED & LARGE 2 1100+ 52.00 - 54.50

HEIFERS 82 HEAD MED & LARGE 1 SMALL 1 MED & LARGE 2 200-300 86.00 - 90.00 - 80.00 - 84.00 300-400 77.00 - 85.50 - 72.00 - 79.00 400-500 79.00 - 85.50 - 74.00 - 79.50 500-600 - - 69.50 - 74.50 600-700 62.50 - 72.00 - -

BULLS 77 HEAD MED & LARGE 1 SMALL 1 MED & LARGE 2 200-300 - - 98.00 - 103.00 300-400 90.00 - 100.00 83.50 - 89.50 91.50 - 94.00 400-500 85.00 - 91.00 - 81.50 - 87.00 500-600 78.50 - 83.50 - - COWS WITH CALVES AT SIDE 2 PAIR - M-1, 6-10 YRS OLD 950-1100 LBS WITH CALVES 200-300 LBS \$700.00 PER PAIR. BABY CALVES RETURNED TO FARMS 7 HEAD OVER 100 LBS \$102.50-137.50 PER CWT. DC

ORANGE, VIRGINIA ON 27-APR-94 PRICES BASED ON IN WEIGHTS.

SLAUGHTER HOGS 17 HEAD BARROWS AND GILTS US 1-3, 200-250 LB. 40.00 US 2-4, 250-300 LB. 35.00 US 1-3, 180-200 LB. 32.00 - 33.00 SOWS US 1-3, 300-500 LB. 31.00 US 1-3, 500 LBS. & OVER 33.50 - 34.35

SLAUGHTER CATTLE 75 HEAD SLAUGHTER STEERS & HEIFERS 5 HEAD HEIFERS STANDARD 1-2, 850-1100 LB. 48.50 - 52.50

SLAUGHTER COWS 65 HEAD COWS BREAKING UTILITY & COMMERCIAL 2-4 43.50 - 45.25 HIGH

DRESSING 46.00 - 46.50 CUTTER & BONING UTILITY 1-3 42.50 - 43.50 HIGH DRESSING 44.00 - 44.50 CANNER AND LOW CUTTER 1-2 35.00 - 42.50

SLAUGHTER BULLS 5 HEAD BULLS Y.G. 1-2, 900-1300 LB. 56.50 - 57.00

LAMBS TOTAL RECEIPTS 5 HEAD SLAUGHTER LAMBS 5 HEAD WOOLED CHOICE FEW PRIME 1-2 FEW 3 90-105 LB. 56.00 - 61.00 GOATS 10 HEAD BILLIES LARGE 55.00 PER CWT NANNIES MEDIUM 27.50-38.00 PER HEAD KIDS 11.00-20.00 PER HEAD

FEEDER CATTLE 292 HEAD STEERS 97 HEAD MED & LARGE 1 SMALL 1 MED & LARGE 2 200-300 - 93.00 - 95.00 89.00 - 100.00 300-400 90.00 - 100.00 93.00 - 94.00 89.00 - 101.00 400-500 94.00 - 105.00 71.00 - 84.00 89.00 - 98.50 500-600 85.00 - 94.00 - 78.00 - 92.00 600-700 71.00 - 78.50 - -

HOLSTEIN 25 HEAD STEER MED & LARGE 2 200-300 76.00 - 79.00 300-500 70.00 - 79.00 500-700 61.00 - 62.00 HEIFERS 107 HEAD MED & LARGE 1 SMALL 1 MED & LARGE 2 200-300 - 79.00 - 80.00 - 300-400 80.00 - 83.50 64.00 - 72.00 75.00 - 82.50 400-500 81.00 - 85.00 61.00 - 67.00 73.00 - 83.00 500-600 71.00 - 76.00 52.00 - 65.00 73.00 - 75.00 600-700 - - 66.00 - 72.00

BULLS 63 HEAD MEDIUM 1 LARGE 1 SMALL 1 MED & LARGE 2 200-300 102.00 - 109.00 - - 300-400 91.00 - 97.00 - 74.00 - 79.00 82.00 - 93.00 400-500 82.50 - 95.00 86.50 - 91.00 - 79.00 - 84.00 500-600 86.00 - 90.00 - - 600-700 - - 61.00 - 70.00 COWS RETURNED TO FARMS 33 HEAD - S-1, 15-18 YRS OLD 800-950 LBS \$280.00-430.00; M&L-1&2, 3-12 YRS OLD 950-1100 LBS \$450.00-510.00 PER HEAD. COWS WITH CALVES AT SIDE 9 PAIR -

M&S-1, 12-15 YRS OLD 800-1100 LBS WITH CALVES 95-150 LBS \$470.00-550.00; M&L-1, 8-10 YRS OLD 1000-1150 LBS WITH CALVES 100-200 LBS \$750.00-870.00 PER PAIR. BRED HEIFERS 5 HEAD - L-1, 1000 LBS \$520.00 PER HEAD. BABY CALVES RETURNED TO FARMS 17 HEAD NEWBORN TO 4 WEEKS OLD \$97.50-105.00 PER HEAD. OVER 100 LBS \$97.50-134.00 PER CWT. LR

Shenandoah Valley Livestock

Harrisonburg, Va.
April 23, 1994

Report supplied by auction

STEERS: M&L-1 300-500 LBS. 101.00-110.00; 500-700 LBS. 85.00-105.00; 700-900 LBS. 70.25-76.00; HOLSTEIN 300-1000 LBS. 56.00-92.50. S-L & M&L-2: 300-500 LBS. 88.50-99.00; 500-700 LBS. 80.00-91.00; 700-900 LBS. 61.50-69.00.

FEEDER BULLS: 300-500 LBS. 85.00-98.00; 500-700 LBS. 82.00-88.00. S-L & M&L-2: 300-500 LBS. 84.00-96.00; 500-700 LBS. 65.00-72.50. HEIFERS: 300-500 LBS. 81.00-88.00; 500-700 LBS. 73.00-79.00; 700-800 LBS. 65.00-69.00.

S-L & M&L-2: 300-500 LBS. 71.00-79.00; 500-700 LBS. 71.00-78.00.

STOCK COWS: BEEF 435.00-580.00; BEEF COWS WITH CALVES 600.00-910.00; BABY CALVES 60.00-102.50.

SLAUGHTER COWS: UTILITY AND COMMERCIAL 2-4 43.00-48.00; CANNER AND CUTTERS 1-3 36.00-44.00.

SLAUGHTER BULLS 1&2: 53.50-60.75.

LAMBS: BLUE O HIGH CHOICE AND PRIME WOOL 67.75; RED O CHOICE WOOLED 72.50; FEEDER LAMBS CHOICE 77.00; SLAUGHTER EWES 16.00-18.00.

Dewart Livestock

Dewart, Pa.

Monday, April 25, 1994

Report Supplied by PDA

STEERS: 60.00-68.75. HEIFERS: 58.00-65.00. GOOD COWS: 42.00-50.00. CANNERS AND CUTTERS: 38.00-42.00.

BULLS: 54.00-58.00. VEALS 90-190 LBS. 99.00-240.00, 70-90 LBS. 50.00-99.00.

HOGS: 38.00-40.00. SOWS: 32.00-39.00.

FEEDER PIGS: 10.00-25.00 PER HEAD.

"OPENING DAY AUCTION"

Buffalo Valley Produce Auction, Inc.
5 miles West of Lewisburg, PA. Turn left on Dreisbach Church Rd. Go 1/2 mile to intersection. Turn right onto Furnace Rd. Travel 300 yards, turn left onto Violet Rd. Auction on right.

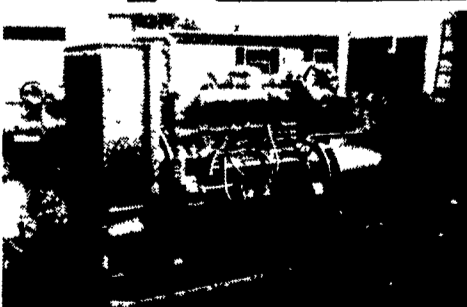
Tuesday, May 3, 1994 • 10:00 a.m.
(Every Thursday and Tuesday Thereafter)
We will be selling a large selection of flowers, hanging baskets, bedding plants, shrubs, potted trees and produce.
Central PA's "Largest and Fastest Growing Produce Auction"
For More Information Call (717) 966-1151
• Neil Courtney, Manager

FARM, LAWN & GARDEN CARTS



- Big #26 Cart, capacity 400 lbs., 14 bushels, 26x2.125 pneumatic wheels, pressure treated plywood, removeable front.....Unassembled \$122.00
 - #26 Cart Kit (plywood not included)\$87.00
 - #20 Cart, capacity 8 bu., 300 lbs., 20x2.125 pneumatic wheels w/removeable front...\$90.00
 - #20 Cart Kit (plywood not included)\$70.00
 - 26x2.125 Pneumatic Wheels w/1/2" bearing.....\$46.00 set
 - 20x2.125 Pneumatic Wheels w/3/4" bearing.....\$42.00 set
- Add 10% Postage and 6% Sales Tax
For PA non-farm use.

Dealers Welcome
FARMWAY MFG.
ELAM S. NOLT
493 Linden Rd., East Earl, PA 17519
(717) 445-7101



GENERATORS

Sales ★ Service ★ Rentals
* Complete Generator Systems
* PTO * Portables * 2-1600 KW
"We Service It If You Have It
And Sell It If You Need It"

34 W. Mohler Church Rd.
Ephrata, PA 17522

Tel: 717-738-0300
Fax: 717-738-4329

"I
GOT A
500 LB. PER ACRE
INCREASE
IN MY CABBAGE."

CHARLES ATTUMUS
ATTUMUS FARMS
PENN RUN, PA



Put down Early Edge, crop starter fertilizer— and get out of the way! Plants come up fast, so you get to market faster. And with no caking or clogging, handling is the easy part. Get the edge on early market premium prices. Call your Agway Crop Sales Specialist for all the details.

