

MAIL BOX MARKET WANTED

Seeking person(s) interested in farming partnership, small business, farming, real estate or others. I have a beef herd. Lanc. Co. 717-872-5712.

Reg. hol. heifer calves from AI sires & dams colstum feed early 3 days to 2 wks. Cumb. Co: 717-532-6618.

Used 9x36 10-36 tire-tube thread not important. Hunt. Co. 908-782-5889.

Loader bucket 6' & 14.9x28 chains for MF 65 fair cond. York Co. 717-227-0513 after 5 or weekend.

JD 420W tractor, in good cond. Cumb. Co. 717-249-2591 after 5 p.m. No Sunday calls.

Miniature mares also possibly colts & fillies also AKC female Huskys, Chocolate Labrador puppies, also Sussex. 201-398-7954.

Grove wagon rear axle 1 1/2 inch diameter bolt on type. 610-987-3082.

Com silage Lab. Co. For Sale: 12' flat bed truck body with utility boxes. 717-865-3919.

40 or 50 hp, 3 phase motor, 875 RPM Lanc. Co. 717-354-9835.

Tobacco lath also 2 bottom Oliver 12" trailer plow. Christ S. Fisher, 1226-A Goshen Mill Rd., Peach Bottom, Pa. 17563.

Seat and fenders for Farmall M or H or tractor for parts. Also hay tedder. Lanc. Co. 717-665-2442.

Good semen tank with canisters also supply box. Lanc. Co. 717-445-5697.

Front end loader for Massey Ferguson 14 or 16 HP or tiller "88" Toyota Celica Car that needs motor or trans. Bucks Co. 215-968-5604.

Farmall M and 400 carburetor parts to rebuilt my carburetor. Also engine for 400. Union Co. 908-439-2428 days

Fertilizer tank for 1240 corn planter, fiberglass measures 41" by 21" new or good used. Bucks Co. 215-766-8130.

International 1/2 ton pickup 1931 to 1941 restorable or restored. Suffolk Co. 516-941-9357.

Good 18.4x38" tires or 30" rims with tires for AC 185. For sale 10 ton feed tank \$650. 85 Ply Horizon \$1400. Carroll Co. 410-756-2087.

Registered shetland sheep dog puppies wanted, good prices paid. Waco Farm, 16912 Bealle Hill Rd., Waldorf, Md. 20601. 301-292-8981.

Skeleton hay elevator, 18' or 20' long. Lanc. Co. 717-445-5112.

JD KBA disc; 24 blade. Jonathan Esh, 374 King St., Myerstown, Pa. 17067. Leb. Co.

Ford loader model 770B - Call Ed Sr. 908-873-8840.

Long term employment for familyman on dairy, can provide references as to ability. Would need housing for large family. 717-676-5798.

MAIL BOX MARKET NOTICE

Free for removal, chicken pen two story 100x36 lots of good lumber. 717-668-1549.

I will be unable to do my regular service work for the next month or so Lloyd H. Ranck, 447 Strasburg Rd., Paradise, Pa. 17562.

Boarding, box stalls, daily turn out to pasture with stream, full care \$125 a month. Sch. Co. 717-345-8091.

Free 275 gal. oil tank, also free 7'x8' ft. storage shed, both must be removed. A.S.P. Montg. Co. 610-631-1890.

Man who has Gravelly backhoe & Gravelly trencher please call again! Gravelly mowers, rototillers 4 sale. 410-398-7680.

Yard sale Sat. May 7th, three families, three miles East of Elverson Village, Rt. 23, Warwick Township, Chester Co. 610-286-0263.

Lost 300 lb. holstein heifer calf. Write to: Christ J. Beiler, Box 149 Atglen, Pa. 19310. Chester Co.

Free mushroom houses, 3x4s, 2x6s, taxi furnished, maybe trucking, big round barn, S. of Oxford, Henry F. Stoltzfus, 24 Queen Rd., Gordonville, Pa. 17529.

Grit's black streaker Tennessee walking horse stud service, Contact Sharon Farmer, Middlesex Co. Sportswood NJ 908-521-4969 or 908-251-3273.

Sale Reports

FOUST SALE

A Public Auction of machinery was held April 20 by John "Butch" and Sharon Foust, 6 miles east of Milton, Pa. along Mexico Road.

Some items sold were: J.D. 7000 6-row corn planter \$6600, N.H. 358 grinder-mixer \$9800, N.H. 855 round baler \$7400, Versatile 700 tractor \$6000, Int. 1066 tractor \$9900, J.D. 3010 tractor \$4200, J.D.

6600 combine w/grain head \$5300 and Hagie 470 4 wheel drive self-propelled sprayer truck \$5600.

Fraley Auction Co. conducted the sale.

EBERLY ESTATE SALE

A Public Auction of real estate and furniture was held April 23 for the estate of Lydia B. Eberly, 545 Sandy Hill Road, Stevens, W. Cocalico Twp., Lancaster Co., Pa. There were 300 people attending the sale and 152 were registered.

The 1 1/2 story brick and frame house and 1 car in Stevens was sold for \$123,000 to Betty Frederick of Denver, Pa.

Other prices included: Sessions mantel clock \$650, miniature jewelry chest \$225, crystal sugar bowl \$175, Empire dresser \$200, oak double bed \$700, walnut extension table \$825, 6 arrowback chairs \$100 each, 2 walnut arm chairs \$175 ea., blanket chest \$300, mahogany slant-top desk \$500, oak bow-front china closet \$700, and General Electric refrigerator \$350.

Kline, Kreider and Good were the auctioneers.



FARM EQUIPMENT AUCTION

MAY 13, 1994 9:00 A.M.

TRACTORS- JD 4400 Combine D; Farmall A w/Plow & Cult; Long 560 4x4; AC-C. **FARM EQUIPMENT**- JD 3800 Harvester; JD 1240 Planter; Woods 0121 Mower; NI 3632 Spreader; JD 640 Rake; NH 456 Mower; NH 311 Baler; Hesston 1071 Haybine; NH 853 Baler; NH 273 Baler; Dunham 6 R Cult. w/Danish Tines; 16' Cardinal Elevator; Dried Cherry, Walnut & Poplar Lumber in various Sizes.

EQUIPMENT SOLD DAILY ALL ADVERTISING SUBJECT TO PRIOR SALE

RECEIVING DAYS - MONDAY THRU THURSDAY, MAY 9 THRU MAY 12 - 7 A.M. TO 5 P.M.

SALE ORDER:

9:00 A.M.- SALE STARTS
9:30 A.M.- LARGE EQUIPMENT
12 NOON- FARM TRACTORS
12 NOON- LAWN & GARDEN EQUIP.
1:00 P.M.- SHRUBBERY
2:00 P.M.- LAWN FURNITURE

A & C DIFFENBACH AUCTION INC.
100 W. JACKSON ST., PO BOX 186
NEW HOLLAND, PA. 17557
(717) 355-7253
FAX# 355-9547

ALAN DIFFENBACH AUCT.- AU2258-L

PUBLIC AUCTION

WOOD & METAL WORKING EQUIP., AIR COMPRESSORS & AIR TANKS, FORKLIFTS, WELDERS, TOOLS, & OFFICE SUPPLIES

MON., MAY 9, 1994 - 2:00 P.M.

Held At
Difffenbach's New Holland Auction Center
- 100 W. Jackson St., New Holland, Pa.
SALE FOR: STOLTZFUS HARDWARE

A. & C. Difffenbach Auction, Inc.
100 W. Jackson St., Box 186
New Holland, PA. 17557
Phone: (717) 355-7253

Alan Difffenbach Auct. - AU2258-L

IMPORTANT PUBLIC AUCTION

VALUABLE FARMETTE • FARM TOOLS • FARM EQUIPMENT • ANTIQUES • FURNISHINGS • FINE CHAMPLEVE ENAMEL VASE
JUNE 11, 1994 9:00A.M.

Located at 114 Race St., Lititz, PA in the Village of Lexington, Lancaster County Pennsylvania, Just North of Lititz Borough

Real Estate to be offered at 11:00A.M.

Consists of a Parcel of Land Containing 2.75 Acres M/L Thereon Erected a Real Neat Set of Farm Buildings that exist as follows: A 2-Story Frame House with 5 Bedrooms 1 1/2 Baths, Large Living Room and Family Room, Dining Room, Kitchen and Mud Room. Various Closets, Lots of Extras. Large Bank Barn, 2-Story Concrete Block Poultry House. Various Parochial Schools in area. Warwick School District. This is Likely as Nice a Cozy Farmette as You Can Find Anywhere in Lancaster County.

INSPECTION OF REAL ESTATE

SATURDAY MAY 21 & 28. 1:00 P.M. til 3:00 P.M.

PERSONAL PROPERTY Auction will

Begin with Farm Related Tools and Equipment at 9:00A.M. Includes JOHN DEERE MDL M. TRACTOR, Cultivator, Plow, Disc Harrow, J.D. SPRING Harrow, Spike Harrow, Drag Harrow, Corn Planter (2 row), Small Oliver Manure Spreader, Steel Wagon Wheel Chassis, Milk Cans, Straw-Cutter, English Saddle, Cast Iron Troughs, WOODEN Wheelbarrow, Cast Iron Dinner Bell, Bridle, Collars, Harness, Single and Double Trees, Forks, Wooden Rakes, One-hole Cast Iron Corn Shellers, Anvil, Blacksmith Tools, Cross-cut Saw, Chain Saw, 10" Skil Saw, Shovels, Vise, Corn Grinder for Chick Feed. Chain Hoist, Platform Scale, Beam Scale, Metal Feed Scoops, Metal Nest, Metal Rabbit Hutch, Feed Carts, Traps, Ice Tong. Iron Pot, Two-hole Corn Sheller, Wooden Pulleys, Keg, Sleds, Metal Farm Equipment Seats, Iron Hinges, Watering Cans, Fuel Cans, Bag Cart, Weed Eaters, Park Bench, Chains. Two Wheel Lawn Cart, Bag Cart, Barrel, 2+ Cords Dry Split Wood, 5 Gallon Fuel Cans, Lawn Mowers, Electric Sander, Horse Drawn Plow, Snow Fence, Chestnut Rails (4x4x12'). Hand Tools, Misc Garden Tools. 18HP DYNAMARK Riding Mower "Nice".

HOUSEHOLD & COLLECTIBLES:

Civil War Sword, Lanterns, Grandmothers Hall Clock, Singer Sewing Machine, Modern Dry Sink, Wall Mount Etagere, Wash Bowl, Crocks (variety of sizes), Jugs, GI & Steamer Trunks, Glass Jar Churn, Irons, Large Buck Table & Benches "Nice", Agate Dishes and Utensils, Bed Side Commode, Desk, Day Bed, Maple Chest of Drawers and Beds, MORAVIAN STAR, Percussion 12 Gauge Double Barrel Shotgun, 12 Gauge Single Barrel. King Size Bedroom Suite, Linens, Valet. Various items of Value not listed.

AUCTION FOR: Ike Blenden

Gibble, Kraybill & Hess, Atty
E.M. Murry Associates

10 S. Broad St.
Lititz, PA 17543
Ekmur Murry 626-2636
Richard Murry 626-8175
Ken Miller
Professional Auctioneers,
Appraisers and Advisors
Since 1953

AU-00648-L

AUCTION SALE

RESTAURANT EQUIPMENT, FORKLIFT KITCHEN CABINETS, FURNITURE CARPET, RUGS, APPLIANCES, DOORS, TILE, SIDING PARTS

TUESDAY, MAY 3 - 10 A.M.

ON PREMISES

1825 E. BOSTON AVE., PHILA., PA

SALE FOR ACCOUNT OF UNDERWRITERS AND OTHER ACCOUNTS COMPRISING IN PART

CABINETS, CARPET, VCR'S, MICROWAVES
275 Wood kitchen Cabinets - Wall, Base, Sink, Corner, Utility & Lazy Susan To Be sold In Sets, Vanities & Vanity Tops, Counter Tops, 2500 Pcs. 2'x2' Commercial Carpet Tiles, 110 Rolls Broadloom Carpet Remnants, (2) 6'x9' Handmade Tufted Rugs, (5) 6'x9', 8'x10' & 9'x12' Wooden Dhurmes, 27 Rolls 6'7" Width Commercial Carpet, Shower & Tub Fiberglass Modules, Steel Bathtubs, Shower & Tub Enclosures, Sink Inserts, Medicine Cabinets, Vinyl Flooring, GE & Sharp Microwaves, GE & RCA Video Cassette Recorders

DOORS, WINDOWS, TILE, SIDING PARTS

25 Pre-hung Steel Entrance Doors, 5 Bow Windows, Wood Interior & Exterior Doors, Anderson Windows, Wood Burning Stove w/Chimney Pipe & Glass Enclosure, Ceiling Tile 12" x 12" & 2'x2', 720 Boxes 8" x 8" Ceramic Tile, 65 Boxes Ceramic Tile 12" x 12" Door Weather Stripping, Insulation, Roofing & Drywall Nails, Quantity of Vinyl Siding Parts - Corner Posts & Channel, Storm Doors, Screens

FURNITURE, STAIRWAYS, HARDWARE

Imp lacquer Wardrobes, Glass Top Dining Tables, Uph Chairs, Sofas, Loveseats, Computer Tables, 15 Wood Curio Cabinets, Leather Work Gloves, Sliding Door Hdwe, Locksets, Pine Stairways & Starter Stairs, Balusters, Newel Posts, Stair Parts, Shop Vac, Elect. Sanders, Elec. Saw, Carded Hardware, Hand Tools, Utility Knives, Tape Rules, Wire Brushes, Hinges, Glue Guns, Hanging Light Fixtures, Trac Lights

RESTAURANT EQUIPMENT

Hobart Upright Dble (Solid) Dr Freezer, Perlick Low Boy Refrig., Cleveland 2 Comp. Steamer, Vulcan 3 Ft Gas Grill, Traulsen Refrig, Orange Juice Machine, Elect. Barb-B-Q Machine, 4 Ft Hood, Pronto Steamer/Convection, Roll Warmer, 15 Lb Deep Fat Fryer, Beer Cooler, Commercial Laundry Washer, 20 Qt Blakeslee Mixer, Berkel M/N 915 Corn Beef Slicer, Gas Fired Broaster, Bally Ice Cream Cabinet, New Hot 36" Hot Dog Roller Grill, Leather Mates & Captains Chairs, Wood Swivel Stools, Qualheim Food Cutter/Slicer, Sharp Microwave Oven

1985 FORD THUNDERBIRD, 2 Dr. Coupe, All Power, A/C
1978 JEEP 4 Wh. Drive, 6 Cyl. 3 Sp.

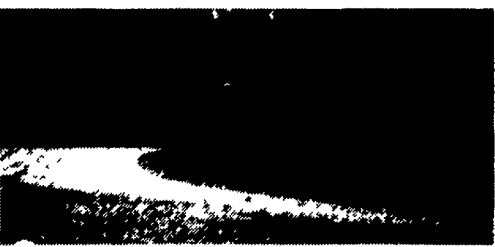
INSPECTION: MONDAY, MAY 2 - 9 A.M. - 4 P.M.
TERMS: CASH OR CERTIFIED CHECK - 25% DEPOSIT
REQUIRED (MINIMUM \$100.00)

ESTABLISHED IN 1884
COMBY Auctioneers
1825 East Boston Avenue
Philadelphia, PA 19128
(215) 634-2500 (215) 634-0498 Fax
PA AUCTIONEERS LICENSE NO. 070000011

5 Acre Country Property NEAR BOWMANVILLE PUBLIC AUCTION FRI., MAY 27, 1994

Auction time 3:00 P.M.

Directions: From Shillington take Rt. 625 South 3 miles past Knauers to property on left, OR from Bowmanville take Rt. 625 North 1 mile to property on right. Brecknock Twp. Lancaster Co.



1422 Reading Road

Large 2 Story Home with approx. 2350 sq. ft. of living area containing large modern eat-in kitchen with large pantry and built-in desk, formal dining room, family room with large stone fireplace and french doors, living room, laundry room, and full bath on 1st floor. UPSTAIRS: has 4 bedrooms and full bath includes master bedroom with 1/2 bath and double closets. 2 car garage. Full basement, oil H.W. baseboard heat, Glenwood wood and coal stove, cold cellar.

Special Features

- * All Pella windows
- * Plastered walls
- * Totally Landscaped
- * Lots of Closets
- * All solid wood interior doors
- * Well water
- * 5 Acres Mostly Wooded
- * Maintenance Free Home

Large Storage shed with 8 run dog kennel. See this beautiful home at OPEN HOUSE: Saturday, May 7, 1:00 P.M. to 3:00 P.M. Saturday, May 14, 1:00 P.M. to 3:00 P.M. Or by appointment. For appt. or assistance to obtain financing, Call Aaron E. Martin, Auct. at (717) 733-3511.

Terms: 10% down payment day of auction, balance at final settlement on or before July 15, 1994.

Auction by
AARON R. & CHRISTINE W. MARTIN
Michael P. Kane, Attorney



Aaron E. Martin Richard L. Stauffer
(717) 733-4168 (717) 733-0296