

DEPENDABLE MOTOR CO.

East Main St., Honey Brook, PA
610/273-3131 or 610/273-3737

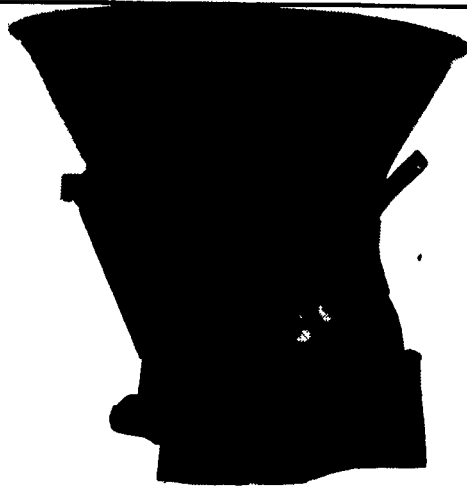
NH 311 Baler w/70 Thrower	NH 478 Haybine
Ford 532 Baler	NI 206 Ground Drive Spreader
NH 310 Baler	NH 770 Harvester
NH 30 Forage Blower	NH 8 Forage Box
NH 770 Pick-Up Head	w/Tandem
Butler 28' Pit Pump	NH 1499 2 Year Old Haybine
NI 1R Corn Picker	Grim 8' Tedder
NH 474 Haybine	Mustang 1200 Skid Loader

New Demco 500 Gallon Sprayer
45' Hyd. Fold Boom, Cyn. Pump,
Elec. Controls
\$7,120

WE REBUILD
489 WOBBLE BOXES



DEALER FOR
Roskamp



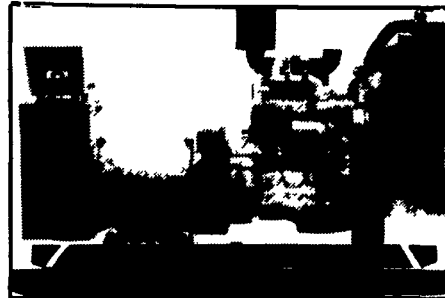
3 Pt. Fertilizer Spreader
600 Lb.....\$375
1000 Lb.....\$395
KUTZ FARM EQUIPMENT
Pine Grove, PA
717-345-4882

TANKS

20,000 Gal. Steel, Excellent w/Saddles.....	\$3,000
1500 Gal. Steel (Pressure).....	\$700
1000 Gal. Steel & Fiberglass (New) Double Wall.....	\$600
2000 Gal. Steel w/Dyke.....	\$1,000
300 & 550 Gal. Steel (New).....	\$400/ea.
500 Gal. Steel (Pressure) w/Tar.....	\$500

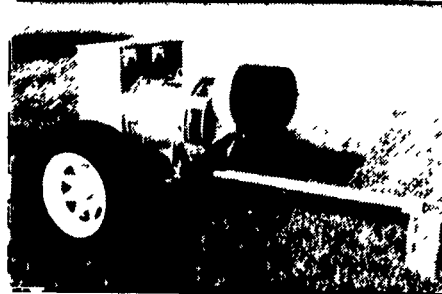
Call Alan Anytime 410-337-3570

GENERATORS



**AUTOMATIC and
MANUAL SYSTEMS**

DIESEL
L.P. GAS
NAT. GAS
NEW & USED



**LEROY SOMER
PTO ALTERNATORS**

BRUSHLESS
INDUSTRIAL GRADE
11 to 60 KW

READY FOR THE NEXT STORM?

For Sales and Service Call The People Who Know Generators

MARTIN ELECTRIC PLANTS

280 Pleasant Valley Rd., Ephrata, PA 17522-8620

Tel: 717-733-7968 Fax: 717-733-1981

PRESEASON SALE ON KUHN GROUND DRIVE GYRORAKES



The Kuhn GYRORAKE will make this year a vintage year for your hay crop

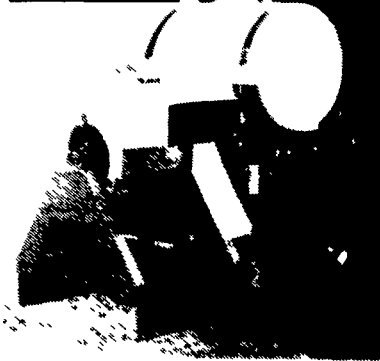
- **CLEANER** - gets all your crop ready to take in.
- **GENTLER** - special "Flex Tines" save all the nutrients
- **STABLE** - perfect for rough ground or steep slopes.
- **FASTER** - get raking sooner and have your hay dry earlier than conventional rakes

Sale Price \$3,290⁰⁰ Good Until May 31, 94

I&J Manufacturing
5302 Amish Road,
Gap, PA 17527
717-442-9451
(Call between 8:45-9:00 AM
weekends, ask for Jake)

110 S. Railroad Ave.,
New Holland, PA
17557
(717) 354-4191
Mon. thru Fri. 7:30-5:00
Sat. 7-Noon

AG-AIR Mist Sprayer



**AG-AIR 150 Gal. CANNON
MISTBLOWER SPRAYER**
\$3,900⁰⁰

GREAT FOR: Sweet Corn, Vegetables,
Trees, Nurseries, Follar Fertilizer

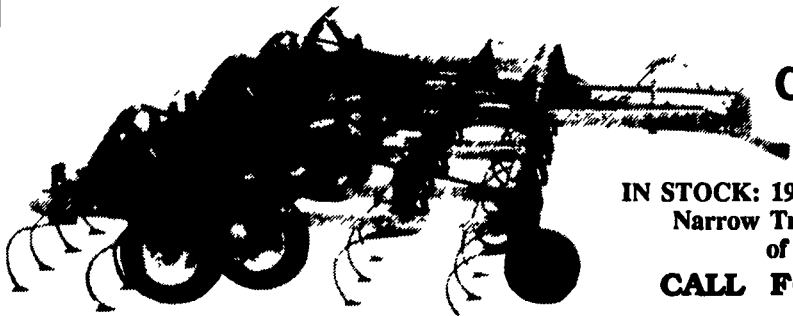


110 South Railroad Ave.
New Holland, PA 17557
(717) 354-4191
Monday Thru Friday 7:30-5:00
Saturday 7-Noon



BRILLION YIELD-ENHANCING TILLAGE TOOLS

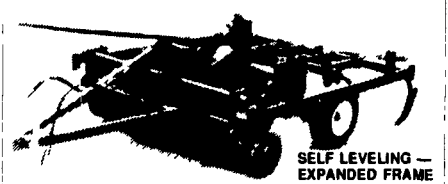
BRILLION HFC HIGH CLEARANCE FIELD CULTIVATOR



IN STOCK: 19'6" HFC 19 with a
Narrow Transport Width
of 13'10"
CALL FOR PRICE

DESIGNED TO HANDLE LARGE AMOUNTS OF SURFACE RESIDUE
Shank clearance is 26" from the bottom of the frame to the sweep tip to handle maximum trash conditions with ease. Shank trip height is 13/14. The lengthened frame w/32" spacing between shank bars (30" on the rear bar) promotes free trash flow.

Brillion SUPER SOIL BUILDERS



SELF LEVELING —
EXPANDED FRAME

The SUPER SOIL BUILDER has an expanded frame — 139" front to back — with three ranks of chisel shanks for smooth and easy flow of residue through the machine. The SUPER SOIL BUILDER is self-leveling, regardless of working depth.

Other features include a 4"x4" square tube weighted frame with 20" diameter coulters slicer blades. The machine depth control hydraulic cylinder is equipped with an adjustable depth stop. Hydraulic hoses to the tractor are included.

IN STOCK
HSB71 7 Shank Super Soil Builder
Sale Price \$7,690 (1 Only)

Brillion DEEP TILLS

penetrate the soil as deep as 18 inches to break up plow sole and hardpan.

Moisture from snow and rain is absorbed deep into the soil. Topsoil is left rough and a certain amount of residue remains to combat wind and erosion



IN STOCK Model BT53 3 Shank, 7'6"
With Extra Springs and Wear Strips
Sale Price \$2,875 (1 Only)

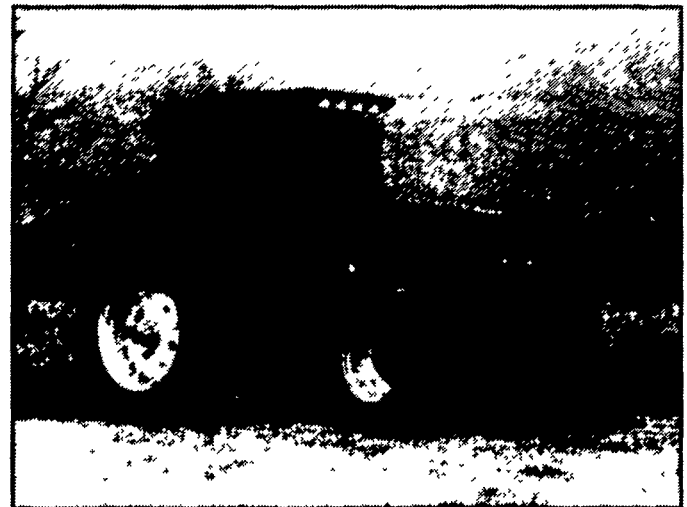


110 South Railroad Ave.
New Holland, PA 17557
(717) 354-4191



For The Way You Farm Today

Fingertip Powershift Control, Improved Field
Visibility and The Most Comfortable Cab Ever



Model 9650
147 PTO HP (109.7 kW)

With their new 18x9 speed full powershift transmissions that electronically control the engagement of massive gears with just the tap of a hand... their cab-forward design that permits a clear, unobstructed view of the field in all directions... and their roomy, comfortable cabs, that feature a unique swivel, air-ride seat and an exclusive seat-mounted control console, the new 9600 Series tractors are clearly ahead of the time.

Every component — from the sleek, sloping hood, to the rugged, cast-iron mainframe to the world-proven air-cooled diesel engines, that require less maintenance — has been designed to match the way you farm today. The result is greater comfort, better performance and improved productivity.

Compare the features and specifications for yourself. Better yet, stop by your AGCO Allis dealer soon and try out one of the 9600 models for yourself. You have to drive it to believe it.

LAWN
&
GARDEN