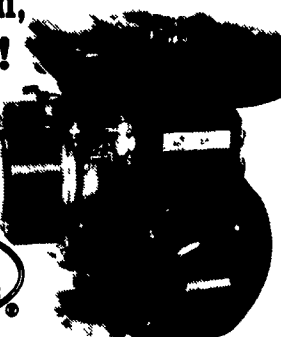


**If we could build a better Robin,
we would! AND WE DID!**

Try the new Robin! (Formerly Wisc-Robin). Same quality features they always had but now with Overhead Valves and all the latest technology. All this plus a much lower price (Due to more direct marketing) makes it today's best engine buy.



SPECIAL INTRODUCTORY PRICES UNTIL APRIL 30, 1994

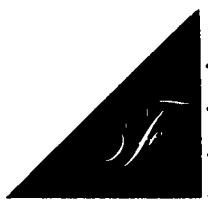
All Models Feature Low Oil Shutdown & Heavy Duty Air Cleaner

EH 12.....4 HP.....	\$259.00	EH 25.....6.5 HP.....	\$439.00
EH 12.....6 HP.....	\$279.00	EH 30.....9.5 HP.....	\$449.00
		EH 34.....11 HP.....	\$509.00

Guarantee: If Not Completely Satisfied Return Engine Within 30 Days, And We Will Replace It With A Comparable Kawasaki Or Honda Engine.

Authorized Service Center

- Complete Rebuilding
- Large Parts Inventory



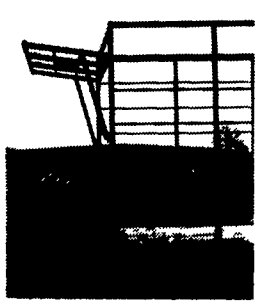
**FISHER
ENGINE
SERVICE**

3141 Old Philadelphia Pk. • Bird-In-Hand, PA 17505

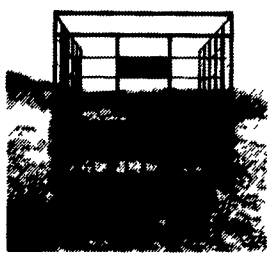
**WISCONSIN
REPLACEMENT
ENGINES**
New & Rebuilt Short Block

• Special Prices On 30 HP
VH4 Crank Start Engines -
No Tank.....\$1,945

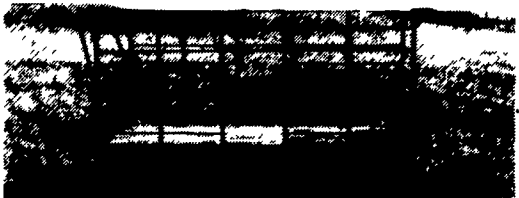
DUTCH BROTHERS



**Unique
Rear Unloading**



**Options:
Running Gears
& Flat Beds**



- 18' x 8' inside
- 14 ga square tubing, for extra strength and long life
- Front and rear openings need only 38" clearance
- End gates made of extra heavy expanded metal, and spring loaded latches
- Beds built of all oak

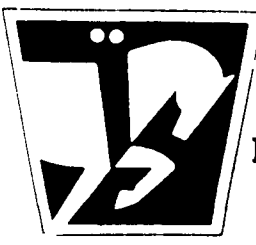
**New Chain
Release
Side
Opening**

- 3" x 8" main beams
- 2" x 5" cross member
- Nailed with galvanized nails
- Bolted with plated bolts
- Fabricated side rail for extra strength
- 8 ton gear
- 11L tires & tubes
- Extension tongue
- Built to last

**HAY
SEASON
SPECIAL**

Dutch Brothers
(717) 776-7465 or
(717) 776-3363

**WISCONSIN HEAVY
DUTY ENGINES**
REPLACEMENT ENGINES
REPLACEMENT SHORT BLOCKS
Trade-In Available - Large Parts Inventory
Complete Rebuilding



MAY SPECIALS

WISCONSIN ENGINES & SHORT BLOCKS

V465D, 65.9 HP, Elec Start, Low Hrs.....	As Low As \$1750.00
W41770, 35 HP, Elec Start.....	As Low As \$1995.00
VH4D 30 HP, Elect. Start.....	As Low As \$1850.00
VH4D, 30 HP (Low Hours) Repl Engine.....	As Low As \$595.00
TJD 18.2 HP, Elec. Start.....	As Low As \$1700.00

Rockford & Twin Disc Clutch Parts

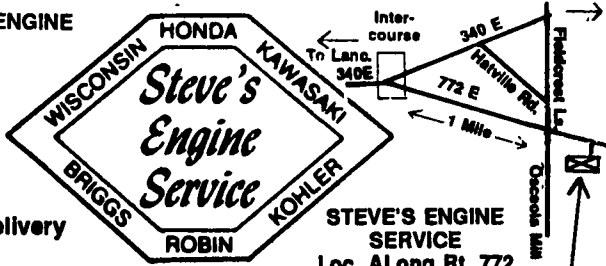
Honda SPECIAL
2.2 HP to 20 HP Engines

Kohler SPECIAL
8-25 HP Engines & Short Blocks,
25 HP As Low As \$1125.00

Check Our Prices & Save Up To 40% Off

We Also Sell & Service The Following: Tecumseh - Briggs & Stratton - Kawasaki - Wisconsin Robin - Onan • Industrial: Ford & Continental Engines, Honda, Lincoln, Hobart, Miller Welders • Parts & Service

FOR ALL YOUR ENGINE NEEDS CALL:
717-768-7669
3618 E. Newport Rd.
Gordonville, PA 17529



- U.P.S. Daily
- Pick-up & Delivery Available

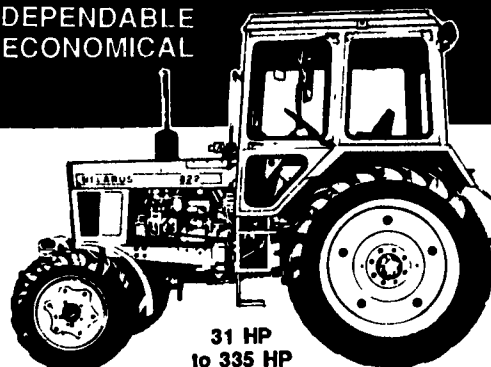
**STEVE'S ENGINE
SERVICE**
Loc. A Long Rt. 772

Belarus

NINETEEN SUCCESSFUL YEARS
IN AMERICA!

Outstanding Parts Availability

DEPENDABLE
ECONOMICAL



31 HP
to 335 HP

QUALITY TRACTORS BARGAIN PRICES!
Full Year Warranty on Parts and Labor
Join The Move To Belarus

31 HP Diesel w/ROPS.....	\$7,095
36 HP Diesel 4 WD w/ROPS....	\$9,995
57 HP Diesel, 4WD w/ROPS..	\$14,200
65 HP Diesel 4WD w/Cab.....	\$16,600
81 HP Diesel 4WD w/Cab.....	\$18,800
100 HP Diesel 4WD w/Cab.....	\$22,700
185 HP Diesel 4WD w/Cab.....	\$38,800

Husco Hydraulics

Now Available On Belarus Tractors

Serving Southern Pennsylvania and Maryland
ANDERSON TRACTOR SALES, INC.

Front End Loader Specialists
536B South Main St. | 4600 Breidenbaugh Lane
Shrewsbury, PA | Glenarm, MD
717-235-0213 • 235-5483 | Toll Free 1-800-457-5705

Best Buys in Used Equipment

CONSTRUCTION EQUIPMENT

- Case 580E, 4WD, Cab, Clean
- Case 580K, 4WD, Cab, Ext. Hoe, Low Hrs.
- Case 1845 Unloader, Diesel

USED FARM TRACTORS

- Magnum 7110, 2WD, 1100 Hours
- Maxxum 5130, MFD, Cab, Loader
- Case 1190, 43 H.P. Low Hours
- Ford 1510, 22 H.P., 2WD, Low Hours
- Ford 1910, 28 H.P., 2WD, w/Loader

MANURE SPREADERS

- NI 3626 Box Spreader, 260 Bu. \$ 3,495
- MF 110, Small PTO Spreader \$ 1,795
- Gehl 329 Scavenger, 2900 Gal. \$ 6,900

HAY & FORAGE

- Vicon 240 Disc Mower, 7' \$ 2,895
- NH 315 baler w/thrower \$ 4,495
- NH 273 Baler w/thrower \$ 1,995
- New Holland 1495 self-propelled, gas \$ 4,500
- IH 100 Sickle Bar Mower, 3 Pt. \$ 495
- JD 1327 Discbine \$ 4,900
- Hesston 1014 Haybine \$ 795
- Gehl TR680, 2RW row crop..... \$ 395
- New Idea 456 round baler, 5x6 \$ 2,200
- Gehl 810 Forage Box..... \$ 1,295

MISCELLANEOUS

- IH 550 Plow, 5 Btm. \$ 895
- IH 510 Drill, 21x7 DD, Press Wheels..... \$ 3,500
- JD 215 Disk, 14', Very Good \$ 2,695
- JD 8350 Drill, 18x7 w/Fertilizer..... \$ 2,800
- MF 52, transport disk, 12' \$ 395
- IH 800 corn planter, 4RN \$ 1,995
- GMC, V6, diesel engine, overhauled..... \$ 2,000

A.L. HERR & BRO.

Park Ave., Quarryville, PA 17566
(717) 786-3521
We Ship Parts U.P.S.



HOT DEALS
On Quality Equipment

We Have A
LARGE SELECTION
of 4x4 Compact Diesels w/Loaders
For Sale, Rent or Lease!

SPECIALS

For The Best Prices
Call Now & Ask For
Chet or Joel



Kubota L245 4x4



Allis Chalmers B w/5'
Woods Belly Mower & Plow



Kubota L2650 4x4
w/Loader, 400 Hrs.



Massey Ferguson 1035
4x4 w/Loader, Low Hours

- Ford 1510 w/Loader
- Ford 1720 4x4 w/loader, 80 hrs., like new
- Klotl 17 HP 4x4 - 3 Pth
- Klotl 22 hp w/Loader
- Yanmar 276 w/Loader 4x4, 500 hrs.
- JD 305 Rear, 5 Gang Reel Mower
- JD 855 w/Loader & Belly Mower
- JD 1050 4x4 w/Loader
- New Pro 6 Harley Rock Rakes
- PTO Driven TracVac & Cart for Compact Tractor
- Kubota F2100 w/72" Mower, Low Hrs.
- Kubota B7200 HSE, 2WD, Low Hrs.
- Kubota L245 4x4 w/Ag Tires, w/Loader
- Kubota B20 w/Loader
- Kubota L2550 4x4 w/Loader
- Kubota L2650 4x4 w/Loader, 400 Hrs.
- Kubota L295 w/Blade
- Bobcat Ransome 60" 3 Wheel Mower

New 3 pt. Hitch Rear Blades 5', 6', 7' & 8' In Stock

• Financing And Leasing Available
Factory Certified Service Available



Goosen 8" Vac
w/Honda Engine



Ford 340 Ind. With
Loader, 1500 Hrs.



White 16 HP 4x4,
Turf Tires



Klotl LB 2204, 4x4
w/Loader, Low Hrs.



Yanmar w/Blade &
Belly Mower

NICARRY EQUIPMENT, INC.
RD #2, Box 2008, Reading, Pa. 19605
610-926-2441

Located: 4 Miles North of Reading On Rt. 61
3 Miles South of Leesport
Reg. Hours: Mon. thru Fri. 8 to 5; Sat. 8 to 3

Kubota

Full Service,
Parts And Rental