

33 RECREATIONAL VEHICLES

Honda 250 SX 3 Wheeler, Hitch and Snow Plow. (610)488-7880.

1980 Ford LT9000, 10 wheeler, cab, chassis, 10 speed, very good condition, \$15,000 OBO. 717-664-4587.

1988 16' dual axle Moritz stock trailer, 7' high, 6' wide, center gate, cattle door, paneled, smoked glass inserts, spare tire, dual brakes, 10,000 GVW, used very little, \$2,500. (717)354-7451.

1988 Ford F250 7.3 diesel pickup, A/T, P/S, P/B, low miles, excellent shape, runs great, \$6,995. (908)735-5532.

1988 GMC 6000 Cattle Truck, 16' Eby Body w/ Warn Winch. Excellent Condition, Recently Inspected. Bradford County. (717)297-3580

1988 Gooseneck Livestock Trailer, 24' Inside Box, Excellent Condition. (717)259-7644.

1988 Trailer, 16' Gooseneck, Combination Camper and 2-Horse Trailer, 16' Awning, Excellent Condition, Just Inspected. (717)862-3203.

'86 International DT466, air, 32800 GVW, 9 speed, 16' Agway feed box dump, blower, open top, extra clean. 412-588-8470 Serious inquiries only.

'88 Ford XLT E150, 7 passenger, 351 EFI, auto, PB, PS, PW, PDL, cruise, tilt, dual air, AM-FM cassette stereo, privacy glass, towing package, 2 tone blue, 32,000 local 1 owner miles, like new 717-733-2873

'90 Dodge D250, 3/4 ton club cab, 318 EFI, auto, PB, PS, AM-FM, 7,400 GVW, 36,000 miles, new radials, silver & white, excellent condition, \$11,900. 717-733-2873

'90 Ford F250 XLT Lariat, 7.3 liter diesel, auto, PS, PB, PW, PDL, cruise, tilt, air, AM-FM cassette, new radials, 43,000 miles, brown & white, 1 owner, excellent condition, \$13,900 717-733-2873

'90 Ford XL F150, 300 6 cyl EFI, 5 spd, PS, PB, AM-FM cassette, dual tanks, Rally Whls, 45,000 1 owner miles, black, \$8,300. 717-733-2873

'72 Ford, 145 Cat engine, 33,000GVW, 5 speed w/ split rear, engine is bad, dump works, dump bed in fair to poor condition, \$800 OBO. Lancaster, PA 717/656-7270

1981 GMC-7000 Diesel Dump Air-Brakes \$6900/BO; 1978 FORD F-600 Dump 5300 mi \$3500/BO; 1977 INT Dump 466 V8 5&2 \$3900; 1972 MACK Gas Dump Air Brakes \$5500/BO (609)466-2953

1990 Aluminum Featherlite Gooseneck Cattle Trailer, Excellent Condition, \$10,000 (717)263-0416.

1990 Moritz heavy duty bumper pull stock trailer, 16'Lx6'W, 10,000 lb. axles, like new condition, \$2800 OBO. 304-735-5151

1992 Ford F250 Custom 7.3 Liter Diesel, 5Spd. Overdrive, New Tires, 33,000 Miles, White, 1 Owner, Like New. \$15,000. (717)539-4064.

1993 Ford Ranger, 4x4, stepside, 5-speed, air, V-6, \$17,000 price negotiable. 717-349-7924 after 5PM

Sprout Waldren
bulk feed trailer,
5 compartments,
tandem axle, PTO
driven
Highway tandem
axle flat w/5'
removable sides

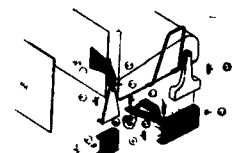
Esbenshade
Turkey Farm
717-687-7631

Lancaster Farming, Saturday, April 30, 1994-C35

'92 Chevy Silverado 3500, dual whl. ext. cab, 454 auto, PB, PS, PW, PDL, cruise, tilt, air, AM-FM cassette, towing package, 12,000 miles w/balance of factory warranty, like new 717-733-2873

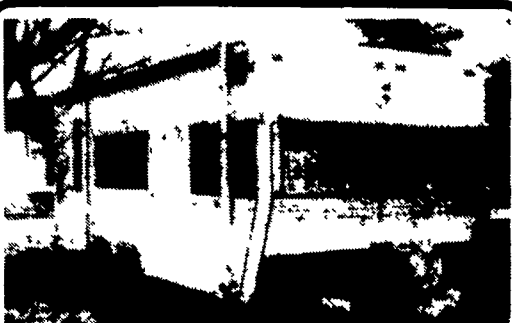
(2) 77 Mack Milk Trucks w/Tanks 1 has 5300 gal. tank, other has 4000 gal. tank Plus 1 extra 4000 gal. tank. 717/582-2355 after 7:30 pm

Ford Super Cab Rear Seat Lift Kit



Raises seat 4" for more comfort includes all hardware & instructions. \$79.95 Free Shipping! PA Residents Add \$4.80 Tax
Weaver
Distributing
1-800-WEAVER-D
RD 2 Box 479
Fredericksburg, PA 17088

Coachman Motor Home
30' Dual Air, Microwave, Generator, Awning, Good Condition
Asking \$9,500
610-942-2591
610-942-2271



Terry Camper Sleeps 6
Awning, Nice
\$1,250
(301) 898-7426

34 AUTOS

1974 Lincoln Continental 4-door, loaded, 39,200 miles, showroom condition, garage kept. 717/328-3417, 717/328-3846 8am-5 15pm Franklin Co

1989 Buick Skylark, 4 Door, 4 Cyl., Fuel Injection, Automatic, Air, New Inspection, 52,000 Miles, 1984 Skylark, 4 Door, Automatic, New Inspection, 1985 T-Bird, Loaded, Air Automatic, New Inspection Windy Spring Farms (215)536-8624

35 TRUCKS & TRAILERS

1950 Chevrolet truck parts for sale. Interior, chassis and mechanical 1955 GMC truck engine. Fair prices. 215/843-6276.

1966 Ford 4WD, dual wheel truck, needs inspection, \$895. 717-927-6658.

1968 C60 Chevy truck for parts, good 5+2 trans and rear, 20,000 miles or rebuilt 366 motor Must take whole truck! (717)859-1662

1968 Int. Dump Truck, 450 gas engine, 10 speed, 33,000lb gross, would make great farm truck, \$3000 firm. 215/933-8557.

1968 International Loadstar Dump Truck, 24,000 GVW, Good Hoist, Good Rubber, Fair Engine, Good For Farm Work, \$400. (717)456-7409.

1970 Ford LT8000, 14' steel dump, tandem axle, Cat diesel engine 717/365-3137

1971 Lane gooseneck trailer, 28', 9,000 GVW, good condition, \$1,500. (717)993-6098.

1974 Ford F700 dump truck with feed blower, new inspection. 610-589-4308.

1979 Ford 56,000 GVW, 18' flat bed dump, 4' sides, 3208 CAT diesel engine, new tires, new clutch, rebuilt transmission, \$9,600. Phone (717)547-1101.

1979 R Model Tandem Axle Mack Tractor, 300 Engine, 60 Transmission, 11R24 5 Rubber w/ Wetline \$7500. (215)383-7042.

1978 Autocar, tandem axle, Cummins power, long frame, new 17 yard dump and hoist, air and hyd. to rear for low-boy Excellent condition, \$14,500 215-598-3768

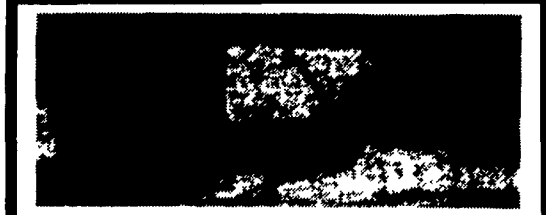
1987 Morgan refer body, 14', excellent condition, choice of two units. Lackawanna County. (717)586-9503.

1984 S model int., 466 engine, long wheel base, air brake, \$7500, 1980 Mack U Model Tandem, 300 PS, \$4500; Also 300 Mack Engine and 290 Cummins Engine (610)944-9871

1987 Ford F350, 4x4, dump, 460, 4 speed, red, very good condition, \$11,000 OBO 717-664-4587



1986 Triggs 26 Ft. Horse Trailer
Fiberglass, Side Door & Rear Vacuum Brakes, Michelin Tires, Good Condition
717-354-7992



Lime Truck, Trailer And Extra Stoltzfus Hydraulic Lime Body Original Owner.
\$15,000 OBO
Will Sell Separately
(717) 225-1002

1976 INTERNATIONAL GRAIN TRUCK

345 C-AS, 4-Speed, Hyd. Brakes, 20,000 GVW, New Paint, New Knaphelde 14' Grain Body with Double Rear Doors and 40" High Sides. New Knaphelde Scissor Hoist. New Inspection
\$7,500



Hostetler Truck Bodies & Trailers
Rt. 322 Milroy, PA 17063
(717) 667-3921



TIBROOK 20' Aluminum Dump Bed with Hoist 72" Sides \$4,500

Call 1-800-345-2829
Curry Supply Co.
Curryville, PA 16631

R & R CAR AND TRUCK CENTER
1657 Rohrerstown Road, Lancaster, PA

Vans, Reefer, Platforms & Dumps, Many Sizes To Choose From
Call For Details



1981 IHC S1854, DT466, 5 Spd., P/S, Hyd. Brakes, 32,000 GVW, 20' C&C, New Paint, Very Clean \$7,500

1988 Ford L8000 24' Cab & Chassis, 210 NP. Ford Diesel, 5 & 2 Spd., P/S, A/B, A/C, 33,000 GVW, Low Miles, Clean \$17,900



Call Ray Leed 717-560-4901

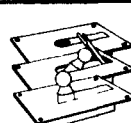
Replacement Truck Bodies

Standard Features Include:

Headboard (Square or Tapered), Stake Pockets, Rubrail, Diamond Plate or 2" Wood Floor, Heavy Duty Construction

Length	Width	Frame Width	Price
7 Ft	66 or 78"	34, 38 or 40"	\$595
8 1/2 Ft	80 or 90"	34 or 38"	\$595
10 Ft	90"	34 or 38"	\$725
11 Ft	90"	34 or 38"	\$950
12 Ft	90"	34 or 38"	\$995
14 Ft.	90"	34 or 38"	\$1100
16 Ft	90"	34 or 38"	\$1300
18 Ft	90"	34 or 38"	\$1500
20 Ft	90"	34 or 38"	\$1800

Plastic Wood Slat For Body Racks



Goose Neck Ball Hitches



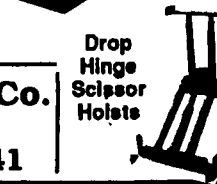
Trailer Hitches



Truck Tool Boxes



Lift Gate



Drop Hinge Scissor Hoists

Ringo Hill Farms Equipment Co.

1624 Route 212 Quakertown, PA 18951
(610) 346-7340 Fax (610) 346-8041

CASH FOR USED DIESEL TRUCKS!

WE NEED 1/2 TON TO ONE TON:

- FORD DIESELS
- SUPERCABS
- CREW CABS
- DODGE CUMMINGS
- 2WD or 4x4
- DUALIES
- DUMPS
- UTILITY BODY
- FLAT BEDS
- CAB & CHASSIS

PLEASE! PLEASE! PLEASE!

Before you sell or trade your diesel in somewhere else for LESS, CALL US!

We Pay More For Used Diesel Trucks Than Anyone.

TRY US!

717-949-2000
Ask for Smokey or Kay



KELLER BROS.

RD 7, Box 405
Lebanon, PA 17042

EZ Dumper

TURN YOUR PICKUP INTO A DUMP TRUCK IN LESS THAN ONE HOUR.

Sale

\$1895

