

# Huntingdon Equipment

Rentals Available **GOOD USED EQUIPMENT**

Huntingdon Valley, PA • 215-672-9667 • 1-800-543-3833 • Eddie



One Of Two 1987 Ford F-350, 460 Eng, 4 Spd., Great For Pulling Trailers



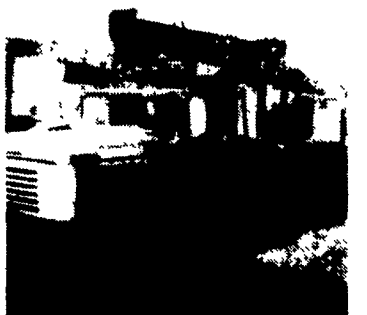
1970 Ford 800 V8 5 Speed with Aux. Trans, 39,000 GVW, VAC Brakes 13'4" Fran Fleet Maintained, 73,000 Miles.



International Presser Digger This Unit Is Ready To Work, Priced For Quick Sale ~~\$9,500~~ \$8,500



Holan 70' Double Bucket 75' working height mounted on 1981 Western Standard, 6x6 Flatbed, CAT 3208, Auto.

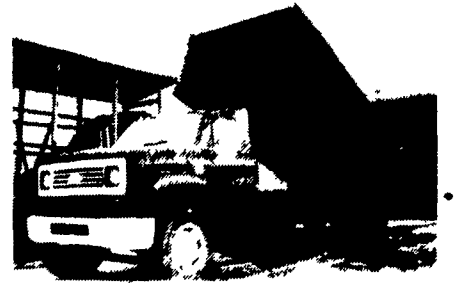


Need a Lift? We Have A Large Selection Of Boom Trucks Up To 14,000 lbs. Cap. Some With Post Diggers.



Bucket Trucks 28' to 65' Gas and Diesel. Call For Details.

## DIGGER DERRICKS/AERIAL BUCKETS/UTILITY EQUIPMENT



1973 C65 Chevy 16 Ft. Flatbed Dump, 366 Gas, 5 Speed, 2 Speed AB \$5,200 OBO Columbia Co. 717-799-5202 After 6

Northwestern Track Crane; good operating cond. Detroit Diesel with a 40' Boom ~~\$7,500~~ \$6,500 Tankers (8) alum tank trailers (6,000-8,000 Gal.) All in good condition, Road Worthy and Currently Working. Prices range from \$3,500 to \$6,500 Winch 35 ton Good Condition ..... \$250 Mack Rears (38,000 lbs) with Camelback suspension 3:87 Ratio; cut off Front and Rear ..... ~~\$1,850~~ \$950 '81 Mack R-model; Custom Interior, 12 sp, 300 wetline; P/S ..... \$13,000 '83 Int. H S1600; 20ft flatbed, 5 sp, P/S, Hydraulic lift gate 6.9; only 30,000 miles ..... ~~\$6,500~~ \$4,500 '74 Mack R-Model; P/S; 6 sp, '81 300 motor ... \$12,000 '79 KW-450 HP Detroit; 8V92 wetline; 15 sp; exc all around condition, spent over \$6,000 on eng. .... \$19,500 Cat D8-SN9A1712 series also Cat pan; SN # 70 scraper capacity 33,000 lbs. Good Cond. .... ~~\$16,000~~ \$14,000 Crane Link Belt Model MS85 SN#9LM1570; self-propelled; Max-L Crane Carner Model #64E SN#CC1721 Very Good Condition ..... \$9,500 '47 Chevy Coupe 2-Dr, Mid-Western Car, Real Good Cond, Original. .... ~~\$5,000~~ \$4,500 '55 Cad'l Coupe de Ville (power everything) Good Condition, Runs, needs restoring ..... ~~\$9,500~~ \$1,500 Amish Buggy Genuine in Excellent Condition ..... \$2,500 '82 GMC P/Up 3/4' 350V8; 4 sp with a granny-low ..... \$2,800

**Whiteford Construction Co., Inc.**  
1605 Dooley Road, Whiteford, MD 21160

Whiteford Office Aberdeen Office  
Ph: 301-838-1470/879-0563 Ph 301-273-6657  
Fax: 301-836-5604 Fax: 301-272-8032

# JONES BEST BUY USED TRUCKS

**JONES** PONTIAC • HONDA  
**GMC TRUCK**  
1335 Manheim Pike, Lancaster  
LANCASTER'S LARGEST Truck Dealer & We're Getting Bigger!  
Prices based on straight sale, Tax & Tags extra.  
Trades accepted at actual cash value  
Must present this ad at time of purchase for sale price.  
717-394-0711

<p><b>'93 GMC CUBE VAN</b> AT, 350, AC, 14' Gruman Olson #7986 Was \$21,900 <b>SALE \$17,700</b></p>	<p><b>92 CHEV K1500</b> 4x4 350, Silverado, AC, 5 Spd. #5059 Was \$17,700 <b>SALE \$16,100</b></p>	<p><b>'87 CHEV SUBURBAN</b> 1/2 Ton, Silverado, AT, AC, 350, Trailer Package #5096 Was \$10,900 <b>SALE \$9,000</b></p>	<p><b>'92 GMC K15</b> 4x4 Club Cab, 350 SLE, AT, AC #5011 Was \$20,900 <b>SALE \$18,400</b></p>	<p><b>'89 CHEV SUBURBAN</b> 4x4, AT, AC, Scottsdale, #5028 Was \$14,995 <b>SALE \$11,700</b></p>
<p><b>'84 CHEV SUBURBAN</b> 4x4 AT, AC, 350 #5083 Was \$6,995 <b>SALE \$4,550</b></p>	<p><b>'89 CHEV S10 BLAZER</b> V6, AT, AC, Tahoe, 60,000 Miles, 2 Wheel Drive #5088 Was \$10,900 <b>SALE \$9,400</b></p>	<p><b>86 CHEV SUBURBAN</b> 3/4 TON 454, AT, 9 Pass., Silverado, 60,000 Miles #5118 Was \$10,900 <b>SALE \$8,250</b></p>	<p><b>83 CHEV S10 BLAZER</b> 4x4, V6, 4 Spd., Tahoe #5124 Was \$4,900 <b>SALE \$3,700</b></p>	<p><b>'91 GMC SUBURBAN</b> SLX, 9 Pass., Frt. &amp; Rr. Air &amp; Heat, AT #5108 Was \$14,900 <b>SALE \$13,100</b></p>
<p><b>'90 DODGE CARAVAN</b> AT, AC, 7 Pass, Dk. Blue #5032 Was \$12,000 <b>SALE \$8,900</b></p>	<p><b>'86 CHEV BEAUVILLE VAN</b> Diesel, 8 Pass, AT, AC, Rear Air &amp; Heat #5131 Was \$8,900 <b>SALE \$5,900</b></p>	<p><b>'88 FORD F150</b> 4x4 V8, AT, PS, Service Bins #5127 Was \$7,900 <b>SALE \$5,900</b></p>	<p><b>'91 GMC K1500 4x4</b> Southern Coach, AT, AC, 350, SLE, 39,000 Miles #5044 Was \$17,100 <b>SALE \$15,300</b></p>	<p><b>'91 GMC K15 XCAB 4x4</b> 5 Spd., AC, SLE, #5147 Was \$18,900 <b>SALE \$17,100</b></p>
<p><b>'91 CHEV S10 BLAZER</b> 4 Door, 4x4, AT, AC, V6, Tahoe #5060 Was \$15,900 <b>SALE \$14,100</b></p>	<p><b>'92 FORD RANGER X-CAB</b> V6, 5 Speed, XLT, AC, 24,000 Miles #5112 Was \$11,995 <b>SALE \$9,900</b></p>	<p><b>'92 CHEV K BLAZER</b> 350, AT, AC, Silverado, #5142 Was \$21,900 <b>SALE \$19,800</b></p>	<p><b>'94 GMC RALLY STX VAN</b> AT, AC, 350, Rr. Heat, 7500 Miles, Solid Black, #5120 New \$21,180 <b>SALE \$18,300</b></p>	<p><b>'88 FORD F150</b> Cap, 300 6 Cyl., 5 Spd. #5066 Was \$7,990 <b>SALE \$6,100</b></p>