

**New Wilmington Livestock Auction**

New Wilmington, Pa.  
Monday, April 18, 1994  
Report Supplied by PDA

CATTLE 262.. PDA ..Compared with last Monday's market..slaughter cows steady.

STEERS: couple Select 64.25 & 65.00. HOLSTEINS: one Select 61.25, few Standard 52.00-57.50. HEIFERS: couple Select 60.00 & 65.00, couple Standard 50.00. COWS: few Breaking Utility and Commercial 45.50-48.75, Cutter & Boning Utility 42.00-48.50, Canner and Low Cutter 39.00-42.75. Shells down to 30.00. BULLS: few Yield Grade No 1 1280/1640 lbs 58.50-61.25, Yield Grade No. 2 900/1710 lbs. 48.75-57.00. FEEDER CATTLE: Steers: few Medium Frame No. 1 490/585 lbs. 67.00-77.00, few 260/450 lbs 70.00-95.00, few Large Frame No. 2 520/680 lbs. 56.00-68.50; Heifers: Medium Frame No. 1 280/630 lbs. 64.00-75.00, few Large Frame No 2 440/780 lbs 60.00-70.00, few 205/315 lbs 70.00-103.00, Small Frame No 2 140/365 lbs 44.00-78.00; Bulls: few Medium Frame No 1 355/750 lbs 59.00-86.00.

CALVES 149..VEALERS: one Choice 200 lbs 115.00, Standard and Good 60/85 lbs 30.00-47.50, Utility 50/60 lbs 27.50. FARM CALVES: No. 1 Holstein bulls 120/125 lbs. 117.50-125.00, 95/115 lbs. 132.00-142.50, 85/90 lbs 125-137.50, No. 2 95/115 lbs. 95.00-120.00; No. 1 Holstein heifers 85/105 lbs 195.00-220.00, No 2 75/105 lbs 100.00-145.00. Beef cross bulls and heifers 75/165 lbs. 115.00-212.50.

HOGS 392..Barrows and gilts 1.00 to 1.50 Higher. BARROWS AND GILTS: US 1-2 220/270 lbs. 42.50-43.50, US 1-3 220/260 lbs 42.00-42.60, US 2-3 240/260

lbs. 41.00-41.50, US 1-3 200/210 lbs. 39.00-42.00. SOWS: US 1-3 330/480 lbs. 34.00-39.75, 490/650 lbs. 40.00-44.25. BOARS: couple 375/455 lbs. 30.25, few 195/260 lbs. 28.00-31.00.

FEEDER PIGS 25...US 1-3 30/50 lbs. 26.00-40.00... per head.

SHEEP 212..Spring sl lambs: Choice 35/50 lbs. 90.00-112.50, few to 125.00, 50/60 lbs. 87.50-104.50, 60/98 lbs 82.00-94.00, Good & Choice 40/70 lbs 70.00- 85.00; Woolled SI Lambs 60/80 lbs. 60.00-85.00. Slaughter sheep: 13.00-35.00 mostly 18.00-22.00.

GOATS 28...few Medium 28.00-37.50, few Small 19.00-34.00, Large Kids 17.50-33.00, few Small Kids 9.00-12.00. -- per head.

**Mercer Livestock Auction**

Mercer, Pa.  
Tuesday, April 19, 1994  
Report Supplied by PDA

CATTLE 231.. PDA ..Compared to last Tuesday's market..sl. steers steady to instances of 2.00 higher, sl. cows 1.00 lower. STEERS: few High Choice and Prime 1265/1445 lbs. 70.00-72.50, Choice 1005/1360 lbs. 70.10-74.75, couple 77.60, Select 64.00-69.85. HOLSTEINS: one Select 56.25, few Standard 52.00-55.50. HEIFERS: Choice 1120/1450 lbs. 70.00-73.85, few Select 63.25-69.85, few Standard 53.50-58.85. COWS: few Breaking Utility and Commercial 45.00-46.50, Cutter and Bon. Utility 43.00-49.25, Canner and Low Cutter 40.00-44.75. Shells down to 36.25. BULLOCKS: one Select 1205 lbs. 63.50. BULLS: couple Yield Grade No. 1 1175 & 2195 lbs. 58.60 & 63.50, No. 2 1070/1715 lbs. 54.35-57.00. FEEDER CATTLE: Steers: few Large

Frame No. 1 575/660 lbs. 81.00-85.00, Medium Frame No. 1 455/855 lbs. 69.00-78.00; Heifers: Large Frame No. 1 425/650 lbs. 67.00-76.00, few Medium Frame No. 1 400/560 lbs. 70.00-73.00, Large Frame No. 2 450/880 lbs. 47.00-56.00; Bulls: few Medium Frame No. 1 380/500 lbs. 70.00- 76.00, few Large Frame No. 1 670/730 lbs. 63.00-67.00, one Large Frame No. 2 at 78.00.

CALVES 82..VEALERS: couple Choice 190 & 200 lbs. 109.00 & 120.00, Standard and Good 60/135 lbs. 40.00-70.00, Utility 60/85 lbs. 40.00-42.50. RETURNED TO FARM: few No. 1 Holstein bulls 120/130 lbs. 110.00-142.50, 85/110 lbs. 140.00-160.00, No. 2 85/135 lbs. 80.00-130.00; few No. 1 Holstein heifers 85/115 lbs. 200.00-225.00; one No. 2 75 lbs. 100.00. Beef cross bulls and heifers 75/95 lbs. 110.00-180.00.

HOGS 153..Barrows and gilts 1.25 to 1.75 higher. BARROWS AND GILTS: US 1-2 220/270 lbs. 42.85-43.85, US 1-3 220/270 lbs. 41.00- 42.75, few US 2-3 230/285 lbs. 37.00-40.75. SOWS: few US 1-3 275/345 lbs. 36.00-38.00, one 710 lbs. 42.00. BOARS: one 330 lbs. 22.00.

FEEDER PIGS 0...NO MARKET TEST!  
SHEEP 0...NO MARKET TEST!  
GOATS 0...NO MARKET TEST!

**MILK.  
IT DOES A  
BODY GOOD.**

**Dewart Livestock Auction**

Dewart, Pa.

Monday, April 18, 1994  
Report Supplied by PDA

CATTLE 141. PDA ..Compared with last Monday's market: Slaughter cows 2.00 higher STEERS: few Select 65.00-69.00, couple Standard 62.00. HOLSTEIN STEERS: few Select 60.50-65.00, few Standard 58.00-59.50. HEIFERS: few Choice 65.00-69.25. COWS: Breaking Utility and Commercial 47.50-50.00, couple 51.00, Cutter and Boning Utility 46.50-49.50, Canner and Low Cutter 40.50-45.50, Shells down to 35.00. BULLOCKS: couple Select 64.50 & 65.00. BULLS: few Yield Grade No 1 1400/1750 lbs. 54.75-58.00. FEEDER CATTLE: Steers: Large Frame No. 2 400/800 lbs. 55.00-70.00; Heifers: few Medium Frame No. 1 400/650 lbs. 65.00-71.00.

CALVES 88..VEALERS: Standard and Good 75/90 lbs. 50.00-60.00. FARM CALVES: No. 1 85/125 lbs. Holstein bulls 120.00-160.00, No. 2 80/120 lbs. 75.00-115.00; few No. 1 Holstein heifers 90/110 lbs. 190.00-240.00. Few Beef cross bulls and heifers 80/200 lbs. 120.00-185.00.

HOGS 73..BARROWS & GILTS: US

1-2 240/255 lbs 39.00-40.75, few 1-3 245/265 lbs. 38.00-38.50. SOWS: US 1-3 320/520 lbs. 33.50-38.00.. BOARS: few 29.00-33.00.

FEEDER PIGS 30...No reported prices. SHEEP 4...One Choice 60 lbs. slaughter lamb 66.00. Slaughter sheep: few 17.00-24.00.

GOATS 5...few Large 22.00-42.50, two Small Kids 36.00...per head.

**North Jersey Livestock**

Hackettstown, NJ

Report Supplied by Auction  
Tuesday, April 19, 1994  
Report supplied by auction

CALVES .40-2.55.  
COWS .20-53% .  
EASY COWS .28-.45.  
HEIFERS .36-.59% .  
BULLS .52% -.65.  
STEERS .45-.77.  
HOGS .28-.45.  
SOWS .27-.35.  
ROASTING PIGS EACH 22.00-41.00.  
BOARS .20-.32% .  
SHEEP .10-.45.  
LAMBS EACH 11.00-70.00.  
LAMBS PER LB. .32-1.04.  
GOATS EACH 17.00-120.00.  
KIDS EACH 13.00-76.00.  
TOTAL 1225.

**CRAIG'S HOG BUYING STATIONS**

Four Locations To Serve You!

Receiving Butcher Hogs:



SHIPPENSBURG  
Wed. & Sat.  
(717) 532-5224

All Stations Open 7:30 am to 11:00 am



GREENCASTLE  
Mon., Wed., Sat.  
(717) 597-2315



MARTINSBURG  
Saturday  
(814) 793-2311

We Still Buy Hogs The "Old Fashioned Way"



THOMASVILLE  
Wednesday  
(717) 792-2248

- No Advance Scheduling
- No Consignment Too Small Or Too Large
- Weighed & Paid For Upon Arrival
- Competitive Prices Paid For Light Weight Hogs, Sows & Boars

For More Information Contact Jeff Craig At (717) 532-5224

**HESS MILLS  
SUPER EXT 24**

**BRINGS OUT THE BEST  
IN YOUR COWS!**



- ☑ Cows Love To Eat It
- ☑ Cows Milk Great On It
- ☑ Cow's Body Condition Improves
- ☑ Reproduction Improves

**GIVE US A CALL AND  
WE WILL RUN YOU A PROGRAM**

**HESS MILLS**



6 S Vintage Rd., Paradise, PA 17562

(717) 442-4183 (717) 768-3301 800-635-3592

™ Trademark of Purina Mills

\* Registered trademark of Ralston Purina Company

**NEED TO CUT THE FEED BILL?**

**NEW DAIRY BLEND COMPLETE  
AND CONCENTRATE FEEDS**

**COMPLETE FEEDS**

#79516  
Dairy Blend Flakes  
16% All Natural  
\$165<sup>75</sup>

#79518  
Dairy Blend Flakes  
18% All Natural  
\$174<sup>25</sup>

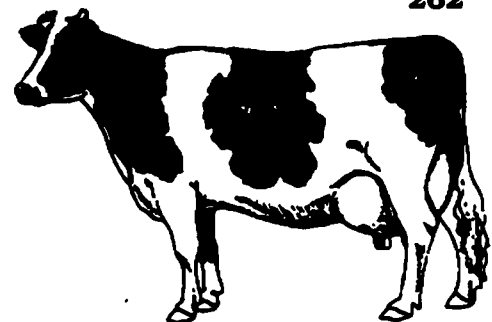
#79520  
Dairy Blend Flakes  
20% All Natural  
\$183<sup>11</sup>

**CONCENTRATE FEEDS**

#51232  
32% All Natural  
Protein Pellets  
\$226<sup>20</sup>

#51238  
38% All Natural  
Protein Pellets  
\$249<sup>25</sup>

#50734  
34% All Natural  
Protein Pellets  
w/Steam Flaked Soybeans  
\$262<sup>22</sup>



Bulk Feed Available in 1 to 24 Ton Loads

Feed prices for Week of April 25 and Subject to Change Weekly with Grain Market. Includes 8 ton volume discount and cash discount of 2% due 15th following month. Deduct additional \$3.00 per ton if paid in 10 days.



**pennfield feeds**