

Excellent Ford Tractors

TW-15 II, cab, air, 4WD, 20.8x38, 1,200 hrs.
 8700, cab, air, DP, weights, 3,700 hrs.
 7710 II, cab, air, 18.4Rx34, 1990 model, 1,100 hrs.
 7600, DP, dual hyd., canopy, 18.4x34, 2,200 hrs.
 6610, 4WD, DP, dual remotes w/Ford 7410 loader,
 2,800 hrs.
 6610, DP, dual deluxe hyd., 18x34, 2,000 hrs.
 6610, DP, dual remotes, roll bar, 18x34, 1,900 hrs.
 5610 II, 4WD, DP, dual deluxe remotes, roll bar,
 canopy, w/Ford QT loader, 750 hours
 5600, factory cab & air, DP, 2 remotes, 540/1000
 PTO, 1,200 hrs., local 1 owner
 5600, DP, dual re. **SOLD** 8.4x30, 3,200 hrs.
 5000, diesel, DP, dual hyd., 540/1000 PTO,
 16.9Rx38, NFE, 4,000 hrs., local 1 owner trade
 4630, 4WD, 8x8 trans., dual deluxe hyd.,
 380 hrs.
 4610 II, syncro trans., 16.9x30, 1,100 hrs.
 4000 SU, gas, 8 spd., 2,700 hrs., 1 owner
 4000, diesel, 8 spd., 16.9x30
 3930, 4WD, 14.9x28 w/Allied 394 loader, 1992
 model w/230 hrs.
 3910 II, 4WD, dual deluxe remote w/Ford 7410
 loader, 750 hrs.
 3910 II, rollbar & canopy w/Ford loader, 550 hrs.
 3910 II, del., roll bar, 13.6x28, weights, 200 hrs.
 3910, diesel, roll **SOLD** x28, 2,100 hrs.
 2600, diesel, 8 spd., LPTO, PS, 3,100 hrs.
 1620, 4WD, hydro w/Ford 72" 914 mower, 130 hrs.
 JD 2955, hi/low, 18.4x38, 1,900 hrs.
 JD 1070, 4WD, **SOLD** s, JD 80 loader, front &
 rear PTO, 250 hrs.

Equipment

FNH 489 haybine, like new
 FNH 824 corn head, like new
 NH 25 forage blower, good condition
 FNH 254 rake & tedder
 Roll bar fits 5000 thru 7610
 Arps 90, 3 pt. backhoe
 JD 403 4' 3 pt. rotary mower

Ford Loaders

7410 QT fits 4WD, 5610 thru 7610

All Tractors Tested On Our Farms.
 — Please Call For Appointment —

Burkholder Bros.
 Lebanon, PA
 717-272-2352 717-949-2123

**FORRESTER FARM
 EQUIPMENT LTD.**

1475 Orchard Rd. Chambersburg, PA 17201
 Phone: 717-263-0705
 Sales - Parts - Service

BEST BUYS IN USED TRACTORS

Ford 8N	10' Ford Field Cultivator
Ford 600, 5 Spd.	10' Brillion Culti- mulcher
Ford 3000 Kelly Ldr. SOLD	Grove 14' Forage Wagon
Ford 3910	NH 479 Haybine
Ford 4000, 1964 Diesel	NH 489 Haybine
Ford 4000	NH 495 Haybine, 12' w/Ldr.
Ford 4610, 4WD w/Ldr.	NH 770 Chopper w/Hay Head & 2 Row Corn
Ford 6610	NH 770 Chopper & Grass Head
Ford 6640S, 4WD	Tye No-Till Drill, Grass & Broom
Ford 7600 w/DP & SOLD remote	NH 278 Baler w/Thrower
JD 4010	NH 315 Baler w/Thrower
S45 Dion Silage Blower	
10' Oliver Transport Disc	
New 6 Row White Cultivator	

Located: 1 Mile Off Exit 8, On 696
 North To Orchard Rd.

Hours: 8:30-5:00 Mon. Thru Fri.
 8:30-12:00 Saturday

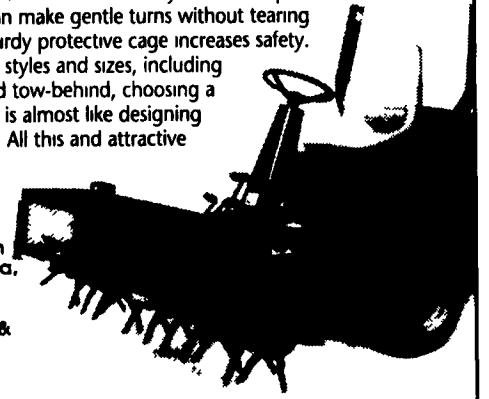
**Put a Front-Mount
 Millcreek Aerator on Your
 Commercial Mower.**

Get more production and profitability from your John Deere, Ford, Kubota or Excel Hustler up-front mowers by attaching a front mount Millcreek core plug aerator.

Millcreek aerators have individually-mounted spoon wheels so you can make gentle turns without tearing turf. And our sturdy protective cage increases safety.

With so many styles and sizes, including 3-point hitch and tow-behind, choosing a Millcreek aerator is almost like designing one for yourself. All this and attractive pricing too. Call today for your free information.

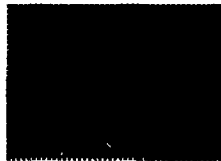
- Fits Ford, John Deere, Kubota, Excel Hustler
- 42", 63", 84"
- 3-point hitch & tow-behind models
- Economy Models Also
- Individual spoon wheels
- Safety cage included



1-800-879-6507

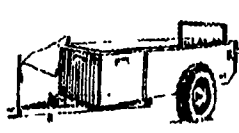
2617 Stumptown Rd
 Bird-in-Hand, PA 17505
 Dealer inquiries invited

**FLEXIBLE
 CHAIN HARROW**



5Ft	\$385	11Ft	\$720
7Ft	\$466	13Ft	\$850
9Ft	\$590	15Ft	\$995

**MANURE
 SPREADER**



25BU	Ground Drive	\$945
50BU	Ground Drive	\$1898
75BU	Ground Drive	\$2100

**ROTARY
 CUTTERS**



4'	\$499
5'	\$535
6'	\$725

Other Sizes Available
 up to 11 Ft

**FINISH MOWER
 3Pt. Caroni**



4'	\$1115
5'	\$1185
6'	\$1465
7'	\$1755

**ROCK RAKES
 3 Pt.**



Size	Price
4 1/2 Ft.	\$265
5Ft.	\$300
6Ft.	\$325
7Ft.	\$350

light duty
 other sizes available
 up to 8ft.

Ringo Hill Farms Equipment Co., Inc.

1624 Route 212 • Quakertown, Pa. 18951
 Phone: (610) 346-7340 Fax: 346-8041

Call or Write For A
FREE Catalog

Sales, Service & Parts For
AGCO Allis, Kubota, Long, Belarus
 New Idea, Hesston,
 Bush Hog And Bandit Chippers

MARSHALL MACHINERY, INC.

Rt 652, Midway Between Indian Orchard and Beach Lake. **Hours: 8-5 Mon.-Sat.**
 Honesdale, PA 18431 (717) 729-7117

WE SHIP PARTS
 DAILY BY UPS.

TRACTORS

AC: 7040 PS; 7040 PS w/Cab; 6080; 6060; 5040 w/Ldr.; 190 Series
 3 w/Cab; 185 w/Ldr.; D17; D12.
 DEUTZ: 6250 w/Loader & Canopy, 4WD; 6260 2WD.
 KUBOTA: M7950; M6950 2WD w/Cab.
 JD: 4250 w/cab 4WD; 4050 w/Cab 4WD; 3020 PS; 3010; 2555
 4WD; 70 Diesel Std.; 520.
 FORD: 7610; 5600; 4000; 601; 8N; 8N w/Ldr.
 MASSEY FERGUSON: 135 w/Ldr. Diesel, 50 w/Ldr., 2135 w/
 Ldr.; 65G; 30 w/Ldr.
 INT: 5088 w/Cab, 3088, 826 Hydro, 806, 686, 574 w/Loader, 544,
 460, M, H, 504 Hi-Clearance, 230, 140 w/Cult., Super A w/Mott
 Mower, 404, Farmall Cub.
 CASE: 1494 w/Quick Attach Ldr.; 1030. VAC: 530. SAME:
 Saturno 80.
 UNIVERSAL: 643.
 Belarus 822 4WD w/Ldr.

MISCELLANEOUS EQUIPMENT

TRAILERS: Large Selection Of New Tag Alongs, 4 To 20 Tons.
 SPRAYERS: Hardy 160 Gal.; Myers 100 Gal. 3 Pth.; JD 535 Trail-
 er, BCI 300 Gal. Tank On Trailer; Century 300 Gal. On Trailer;
 Rotomist 100G Air. Assorted Trailer And 3 Pth. Sprayers.
 FEEDER WAGONS: Schuler 175B; Kilbros 250 Grain Wagon;
 E-X Flow 220 w/Grain Wagon; Knoedler Feeder; Knoedler
 Dial-A-Mix.
 TMR MIXER WAGON: Gehl 7210, Like New; Schwartz 880;
 Artsway 850B w/Scale.
 MISCELLANEOUS: Case/IH 8610 Bale Processor; Agri Metal
 Bedding Chopper; Dynavent 3 Pt. Bale Chopper; Hesston #10
 Stack Hand And #10 Stack Processor; Cardinal Auger Grain
 Elevator; JD 30 2 Row Potato Digger; MC 3 Pth. Lawn Genie
 Pick Up Mower; Schulte Hi Dump Picker; Vail Rock
 Picker; Jobber Rock Windrower; Vermeer Trencher; Vermeer
 Stump Grinder; York Grader (Towable); York Heavy Duty Pull
 Type Road Rake; Ford Lane Paver Model A-2; 4 Wheel Pull
 Type Antique Road Grader; Army GMC Cargo Truck 6x6 2 1/2
 Ton; Fransgard 3 Pt. Log Winch; Kalyon Dump Trailer. Gravity
 Boxes. Large Supply Of Front End Loaders And Cabs For Vari-
 ous Makes Of Tractors.
 Heavy Duty Snowblower Self Powered Industrial Loader Mount-
 ing. Selection Of 3 Pt. Snowblowers.

TINKERER'S ROW: AC D15; AC B; AC 175; Ferguson 20; Far-
 mall H; 460 Diesel; 806 Diesel w/Ldr.; Cub w/Fast Hitch; 404.
 Haybuster No-Till Drill; AC D15 3 Pt. Cultivator & Side Dress-
 er; Case 310C Loader w/Ripper; Auto. Roller Mill. AC 4R No-
 Til Corn Planter.

**"PARTIAL LISTING"
 PLANTING AND TILLAGE**

PLOWS W/SPRG RESET: Int. 735 6X Var. Width, 735 5X Var.
 Width, 725 5X, 724 4X, 450 3 Pth. 3X And 4X. JD: 2500 5X,
 2600 Vari. Width 5X; 3600 4X And 5X Trailer. Large Selection
 Of 1X, 2X, 3X 3 Pth. Plows. Model 125 Int. 3 Bottom Rollover
 Plow.
 CHISEL PLOWS. Brillion 9 Shank Chisel; Int. 5500 11 Shank,
 Like New.
 Case IH 9 Shank Chisel.
 Int. 3 Pth. 5 Shank Ripper; Brillion 16 Ft. Fold Up Transport
 Harrow-Danish Tine. Brillion 10 Ft. Cultimulcher; Brillion 13
 Shank Soilsaver; 8 Ft. And 10 Ft. Cultupackers. Holland 2 Row
 Transplanter; 2 Row 3 Pth. Corn Planters. AC 4 & 6 Row No-
 Till Air Corn Planter. Brillion 8 Ft. 3 Pth. Cultipacker/Seeder. 4
 Row 3 Pt. Cultivator w/Cole Side Dressers. Glenco Series III
 Soil Saver 7 Shank. Like New; Farmhand (Glenco) 3 Shank
 Deep Tillage w/Walking Beams; New Deutz Allis 2500 11'
 Disc w/Rock Flex.
 DISCS: Finishing 6-16' NH, JD, AC, Int., MF & Bush Hog.
 Offset Plowing: Bush Hog Kewanee, 8-12' Miller 11' & 12'.

MANURE EQUIPMENT

LIQUID: Hedlund Martin 2900 Gal. & 2400 Gal.; Clay Honey
 Wagon; Wic 2100 Gal. Tandem.
 SPREADERS: NI: 218 Tandem w/Upper Beater And Tailgate. NI:
 214, 243, 244, 352. NH: 327, 514, 200 Bu. Tank Reconditioned;
 663 Tank. NH 304 Side Delivery, 307 Side Delivery. Gehl 309
 Side Delivery, 524 Tandem Slurry. Millcreek 35 Bu. Spreader.
 JD: Model L 75 Bu. Ground, 660 Tandem, 40.

USED TRACTORS WITH LOADERS

4WD: Deutz Allis 6080 w/Ldr., 85 HP; Deutz Allis 6250 w/Ldr.,
 52 HP; Kubota L4150 w/Ldr., 50 HP; Kubota B8200 w/Ldr., 20
 HP; Bolens w/Ldr., 25 HP; JD 2555 w/Ldr., 65 HP; AC 840
 Payloader 1 1/2 Yds.; Fiat Allis 345B 1 1/2 Yds. Payloader.
 2WD: IHC 2410B w/Ldr.; Ferguson 20 w/Ldr.; Ford 8N w/Ldr.;
 MF 2135 w/Ldr.; MF 135 Diesel w/Ldr.; AC 5040 w/Ldr.; AC
 615 w/Ldr.

**COMPACT TRACTORS AND
 EQUIPMENT**

Int. 234 Tractor w/Snow Blade & Mower. Kubota: L4150 Tractor/
 Ldr./Backhoe; B8200DT w/Ldr.; B8200 w/Mower; B5100 w/
 Ldr.

HAY AND FORAGE

HAYBINES: NH: 469, 472, 474, 477, 489. Hesston: 1070, 1071,
 1090, 1014 Hyd. Swing. NI: 270, 272 Conditioner. Hesston 1050
 Discbine Cuts 9'6". Hesston PT7 Mower/Conditioner.
 RAKES: JD 660 w/Dolly Wheels; NH 258; 56. NEW Deutz Fahr
 KS2.60 Dual Rotary w/Hyd. Fold Up 19 1/2 Ft. Working Width. Vic-
 on 3 Pt. Tedder Rake. NEW Tonititi PTO Trailer Rotary 9' Or
 11'8". NI 406 9 1/2 Ft. Dolly Wheels. Fahr Four Star Centepede
 Tedders.
 ROUND BALERS: Hesston 530, Like New. JD 410, 335, 330. NI:
 483 & 484. NH 847, 855.
 SQUARE BALERS: JD 336; NH 68, 315, 320. Square Balers w/
 Kickers; NH 273, JD 336, 337.
 FORAGE HARVESTORS: NH 718. NH 782 2/824 2 Row Head.
 HESSTON: 2000-100, 7020 w/Choice Of Heads, 7140.
 FLAIL CHOPPERS: NH 36. JD 15A.
 FORAGE BLOWERS: NI: 620, 622. Gehl 1580. NH Super 23,
 28
 Large Selection Of Pick Up And Corn Heads - Call For Your
 Needs.
 NI 310 Picker. JD 3300 Combine w/15' Grain Head. Gleaner K
 Combine w/10 Ft. Grain Head. Kasten 22 Forage Wagon, Tan-
 dem Gear; Lamco Forage Wagon w/Roof, 3 Beater.
 White Top Harvester Silo, 20x32 w/Unloader, Torn Down,
 Ready To Load.
 GRINDERS/MIXERS: Artsway 425A; Gehl 100 Hyd. Drive w/
 Scale; JD 700; IH 1250; NH 355 Like New.

INDUSTRIAL

TRACTOR/LOADER/BACKHOES: AC 715C, D15, Case 580
 w/3 In 1 Bucket; 480.
 DOZERS W/ALL WAY BLADES: Fiat Allis FD7; AC 653; H3.
 JD 350C.
 CRAWLER/LOADERS: Cat 955, 941. Case 450. JD 350.
 ARTICULATING LOADERS: FA 345B. AC 840. Case W7 Dsl.
 Payloader.
 IND WHL LDRS: AC 615. IHC 2410B.
 FORKLIFTS: AC 706, 600, D15. Pettibone 4WD B66 Long
 Reach.
 SKID STEERS: JD 575; Bobcat 743.
 Arps 56 And 728 3 Pt. Hitch Backhoes.
 Kubota KH35 Excavator. Ingersol Rand 250 Air Compressor.

SPECIAL

JOHN BEAN — FMC MODEL 100-G
 ROTO-MIST SPRAYER
\$2,975