

1 - Used Eries Over Belt Magnet  
With Cleaning Belt  
Perfect for Recycling Material  
**Fultz Bros.**  
717-438-3354

## PEQUEA

7 - 9 Ft. Hay Tedders P.T.O.  
16 - 18 Ft. Steel Bale Throw Racks  
3-6-8-10 Ton Wagon Gears  
12 Ton Tandem  
2-4-6-8 Row Cultivators  
3 Pt. Rotary Cutters  
Portable Bunk Feeders

**Used Equipment**  
JD - 3 Pt. Rotary Cutter  
10 Ft. 3 Pt. Field Cultivator

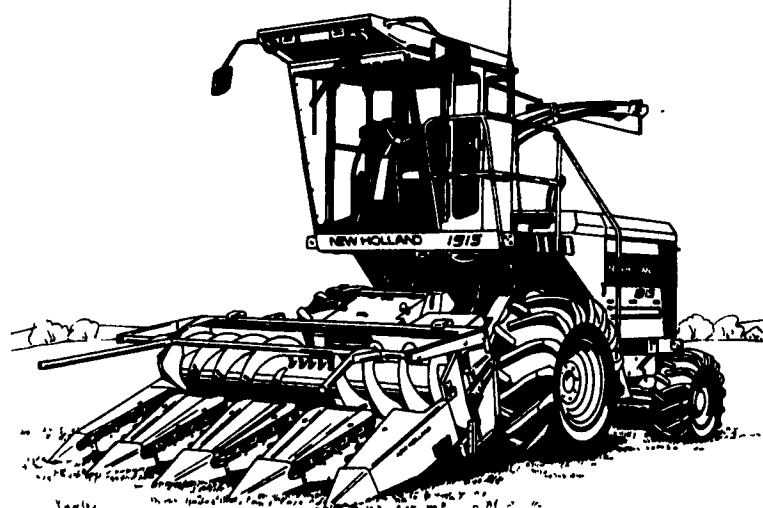
### HENRY HORNING

404 W Newport Rd., Litz, PA 17543  
717-626-5033

## 1 FARM EQUIPMENT

# 1915

**In Stock - READY TO GO!**



## PRECISION HARVESTING

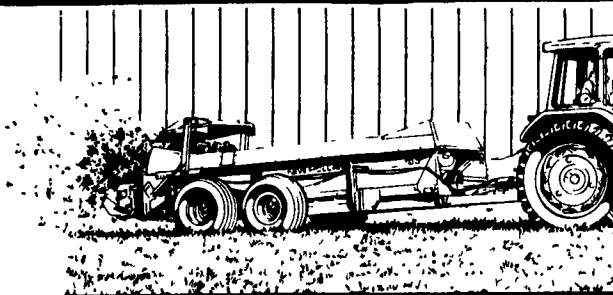
The Model 1915 self-propelled forage harvester makes it easy to make high-quality forage. The rugged 26-inch-wide cutterhead uses 12 full-width knives to deliver a fine, uniform chop for the best quality feed. And, the Accucut™ knife sharpening system makes it easy to chop at peak efficiency.



Stop in and get the details.

**April is Last Month for  
Extra Discounts on 1915 Harvester**

# 185



## NO SPREADER BUILT BETTER

- The New Holland Model 185 is built to last.
- **Strong, corrosion-resistant steel sides.**
- **High-density polyethylene (HDPE) floor.**
- **Lifetime Bonded Protection warranty.**

This 287-bushel spreader features oscillating tandem wheels that allow faster ground speeds with less ground compaction. Get fast, smooth unloading at two spreading rates with the standard worm gear drive.

Stop in and see why this is the best-selling spreader in its class.



## QUALITY USED EQUIPMENT FOR SALE

### SPECIAL MENTION

NH 1495 HAYBINE • Diesel Engine • Hydro • cab • Air Cond.

- (3) NH 489 Haybines
- NH 851 Round Baler
- NH 144 Windrow Inverter
- NH 411 Discbine®
- IH 1086 Tractor
- NH 791 Spreader
- Deutz Allis 6260 Tractor
- NH 315 Baler w/Model 70 Thrower

# DILLER EQUIPMENT

Call Anytime, Except Sunday

Chambersburg, PA 17201

Call or Write For Free Literature (717) 369-2691

(800) 523-8002



### A WAGON BUILT TO LAST- ASK OUR CUSTOMERS

- All steel bed frame - scheduled #40 pipe side racks
- Sides easily removed - Side gates open under pressure
- Treated lumber flooring - screwed down
- Formed steel side rails - steel bumper
- Rear gate swings 270° either way
- Standard size: 8x16, 8x18, 8x20, 9x18, 9x20
- Also just side racks available



### DEALERS

**D.J. Implement**  
Dayton, VA  
(703) 879-9928

**Chambersburg Farm Service**  
Chambersburg, PA  
(800) 447-8830

**Norman Shores Tractor**  
Towanda, PA  
(717) 265-9014

**Binkley & Hurst**  
Litz, PA  
(717) 626-4705

**Brandt Tractor Farm**  
Ottsville, PA  
(215) 795-2281

**Wineland Equipment**  
Martinsburg, PA  
(814) 793-2109

**Snyder's**  
Watsonstown, PA  
(717) 538-5555

**Charles S. Snyder, Inc.**  
Tamaqua, PA  
(717) 386-5945

**Dan's Repair Service**  
Honesdale, PA  
(717) 448-2009

**R & W Equipment**  
Carlisle, PA  
(717) 243-2686

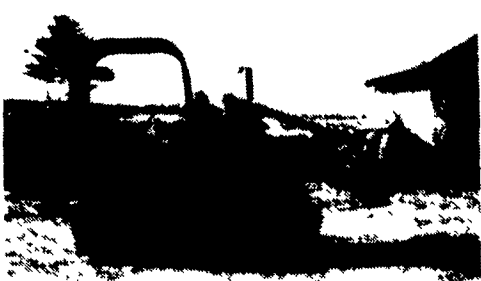
**Enfield Equipment**  
Whiteford, MD  
(410) 452-5252

**Son-Clay Farm Repair**  
Newburg, PA  
(717) 423-6719

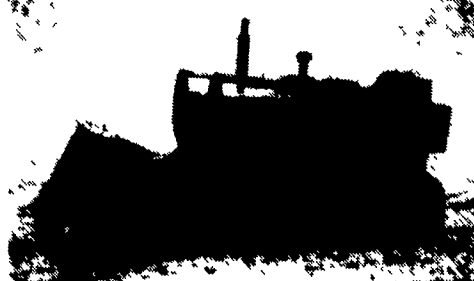
## J & F EQUIPMENT

(717) 859-3283

No Reasonable Offer Refused  
Custom Repairs On All Makes Industrial & Farm Equipment



1981 JD 350C \$13,500  
2 Available



IH 100C Rebuilt Motor \$9,500

### WE ARE BUYERS FOR CONSTRUCTION EQUIPMENT NEEDING REPAIRS

- (2) Case 1835B Skid Loader.....\$7,200/ea.
- Case 850B Crawler Loader, good cond.....\$13,500
- JD 350C crawler loader, good condition.....\$12,000
- JD 350 or 450 ripper, good condition.....\$1,000
- JD 350C Crawler Loader, good condition.....\$13,000
- '84 JD 455D Crawler Loader w/New Tracks, New Paint.....\$19,000
- IH 100C Crawler Loader, Rebuilt Motor.....\$9,500
- Komatsu D65S Crawler Loader.....\$10,500
- Mitsubishi 90 excavator, good cond.....\$18,500



1973 JD 544A \$14,000



Dresser TD7E, Rebuilt Motor,  
New Chains, Rebuilt Blade  
\$14,000

## CONCRETE & LAWN EQUIP.