

North Virginia

Richmond, Va.

Thursday, April 21, 1994

SOUTHSIDE (BLACKSTONE) VIRGINIA ON 20-APR-94 PRICES BASED ON IN WEIGHTS.

SLAUGHTER CATTLE 38 HEAD. SLAUGHTER COWS 36 HEAD COWS BREAKING UTILITY & COMMERCIAL 2-4 39.50 - 45.00 HIGH DRESSING 44.00 - 47.50 CUTTER & BONING UTILITY 1-3 40.50 - 42.00 CANNER AND LOW CUTTER 1-2 34.00 - 38.50.

SLAUGHTER BULLS 2 HEAD BULLS Y.G. 1-2, 1600 LBS. & OVER 62. FEEDER CATTLE 309 HEAD.

STEERS 84 HEAD MED & LARGE 1 SMALL 1 MED & LARGE 2 200-300 - 95.00 - 100.00 300-400 97.00 - 104.00 90.50 - 97.00 - 400-500 93.00 - 105.50 85.00 - 87.00 89.50 - 92.00 500-600 88.00 - 100.00 72.50 - 82.50 86.50 - 88.50 600-700 80.00 - 86.00 - 800-900 66.00 - 73.00.

HOLSTEIN 37 HEAD STEER MED & LARGE 2 300-500 65.00 - 68.50 500-700 64.00 - 65.50 700-900 60.75 - 63.00.

HEIFERS 110 HEAD MED & LARGE 1 SMALL 1 MED & LARGE 2 200-300 - 79.00 - 85.00 300-400 - 79.50 - 85.50 400-500 83.50 - 87.50 68.00 - 75.00 73.50 - 80.00 500-600 74.50 - 83.50 61.50 - 70.50 70.50 - 74.50 600-700 - 62.00 - 66.50.

BULLS 78 HEAD MED & LARGE 1 SMALL 1 MED & LARGE 2 300-400 90.00 - 94.50 84.50 - 90.50 - 400-500 84.50 - 93.50 80.00 - 85.00 - 500-600 - 70.50 - 74.00 73.00 - 75.00 600-700 68.50 - 70.50 - COWS RETURNED TO FARMS 9 HEAD - M-2, 3-6 YRS OLD 800-950 LBS \$350.00-410.00 PER HEAD. M&L-2, 2-4 YRS OLD 750-900 LBS \$47.00-54.00 PER CWT. COWS WITH CALVES AT SIDE 12 PAIR - M&L-2, 4-8 YRS OLD 850-1000 LBS WITH CALVES 70-150 LBS \$510.00-600.00; M&L-1, 4-10 YRS OLD

1050-1200 LBS WITH CALVES 80-200 LBS \$640.00-720.00 PER PAIR. BABY CALVES RETURNED TO FARMS 4 HEAD OVER 100 LBS \$107.00-117.50 PER CWT.

ORANGE, VIRGINIA ON 20-APR-94 PRICES BASED ON IN WEIGHTS.

SLAUGHTER CATTLE 152 HEAD. SLAUGHTER COWS 143 HEAD COWS BREAKING UTILITY & COMMERCIAL 2-4 41.50 - 47.75 CUTTER & BONING UTILITY 1-3 42.00 - 48.00 HIGH DRESSING 47.00 - 51.00 CANNER AND LOW CUTTER 1-2 35.50 - 43.00.

SLAUGHTER BULLS 9 HEAD BULLS Y.G. 1-2, 900-1300 LB. 59.00 Y.G. 1-2, 1300-1600 LB. 58.00 - 58.50 Y.G. 1-2, 1600 LBS. & OVER 58.00 - 59.75.

FEEDER CATTLE 329 HEAD STEERS 107 HEAD MEDIUM 1 LARGE 1 MED & LARGE 2 300-400 106.00-108.00 93.00 - 95.00 - 400-500 105.00 94.00 - 98.00 - 500-600 95.00 - 97.00 92.00 83.00 - 88.00 600-700 - 85.75 - 87.00.

HOLSTEIN 7 HEAD STEER MED & LARGE 2 200-300 81.00 700-900 51.00.

HEIFERS 111 HEAD MEDIUM 1 LARGE 1 MED & LARGE 2 300-400 78.00 - 82.00 - 80.75 400-500 76.00 - 83.00 84.00 71.00 - 75.00 500-600 72.00 - 76.00 77.00 - 80.00 70.50 - 75.00 600-700 61.00 - 65.00 67.50 - 69.00 - 800-900 - 50.00 - 59.00.

BULLS 104 HEAD MEDIUM 1 LARGE 1 SMALL 1 MED & LARGE 2 300-400 93.00 - 99.50 - 67.00 - 76.00 - 400-500 81.00 - 92.00 - 75.00 101.00 500-600 88.00 80.00 79.00 80.00 600-700 - 70.50 - 700-900 - 69.00 - COWS RETURNED TO FARMS 13 HEAD - M&L-1, 4-10 YRS OLD 900-1100 LBS \$450.00-600.00 PER HEAD. COWS WITH CALVES AT SIDE 24 PAIR - M&L-1, 4-10 YRS OLD 900-1100 LBS WITH CALVES NEWBORN TO 200 LBS \$550.00-740.00 PER PAIR.

Leesport Livestock Auction

Leesport, Pa.

Wednesday, April 20, 1994

Report Supplied by PDA

CATTLE 306. PDA ..Compared to last Wednesday's market. Supply included 110 slaughter steers and heifers and 65 feeder cattle ..sl. steers steady to 2.00 lower, sl. cows steady to strong, sl. heifers mostly steady. STBERS: Choice 1080/1555 lbs. 67.75-71.00, one 74.00, Select 1095/1700 lbs. 63.50-68.00, Standard 52.50-64.50. HOLSTEINS: High Choice and Prime 1165/1540 lbs. 64.25-67.00, Choice 1235/1550 lbs. 61.50-64.75, Select 56.00-62.50. HEIFERS: Choice 1080/1360 lbs. 65.50-70.00, Select 60.00-64.75, Standard 55.00-58.00. COWS: Breaking Utility and Commercial 46.00-52.00, Cutter and Bon. Utility 44.00-49.50, Canner and Low Cutter 40.00-45.75. Shells down to 23.00. BULLS: Yield Grade No. 1 1190/2300 lbs.

58.75-63.25, one 69.25, No. 2 1020/1485 lbs. 53.00-57.50. FEEDER CATTLE: Steers: Medium and Large Frame No. 1 465/825 lbs. 70.00-73.00, Large Frame No. 2 370/650 lbs. 62.50-66.00; Heifers: Medium Frame No. 1 480/ 575 lbs. 58.00-67.00, Large Frame No. 2 405/567 lbs. 46.00-65.00; Bulls: Large Frame No. 1 & 2 515/943 lbs. 55.00-63.00, few Small Frame No. 2 345/410 lbs. 41.50-45.00.

CALVES 100..VEALERS: few Standard and Good 80/110 lbs. 50.00-65.00, Utility 65/105 lbs. 20.00-55.00. RETURNED TO FARM: No. 1 Holstein bulls 80/125 lbs. 135.00-164.00, No. 2 70/110 lbs. 70.00-115.00; No. 1 Holstein heifers 90/120 lbs. 200.00-230.00, few No. 2 80/90 lbs. 165.00-180.00. Few Beef cross 70/115 lbs. 85.00-140.00.

HOGS 125..Barrows and gilts .25 to .50 higher, sows 1.50 to 2.00 higher. BARROWS AND GILTS: US 1-2 220/270 lbs. 41.75-44.00, US 1-3 220/299 lbs. 37.10-

41.50, few US 1-3 125/195 lbs. 27.50-38.50. SOWS: US 1-3 335/480 lbs. 33.50-39.00, 500/555 lbs. 41.75-42.75. BOARS: few 375/590 lbs. 30.75-31.75.

FEEDER PIGS 71...Few US 1-3 46/73 lbs. 57.50-82.50, Utility 20/40 lbs. 50.00. --- per cwt.

SHEEP 645..Spring sl. lambs: High Choice and Prime 35/55 lbs. 115.00-150.00, 50/70 lbs. 92.50-132.50, 80/85 lbs. 80.00-84.00, Choice 20/40 lbs. 87.50- 130.00, 40/60 lbs. 85.00-112.50, 60/90 lbs. 75.00-102.50, Good and Choice 20/50 lbs. 65.00-85.00, 60/85 lbs. 65.00-77.50. Woolled sl. lambs: Good 25/88 lbs. 50.00-65.00, Good and Choice 70/115 lbs. 55.00-78.00. Lambs under 20 lbs. 5.00-18.00... per head. Slaughter sheep: 18.00-36.00.

GOATS 143...Large 42.50-76.00, few to 90.00, Medium 35.00-50.00, Small 20.00-47.50, few to 67.50, Large Kids 30.00-42.50, Small Kids 10.00-38.00... per head.

K

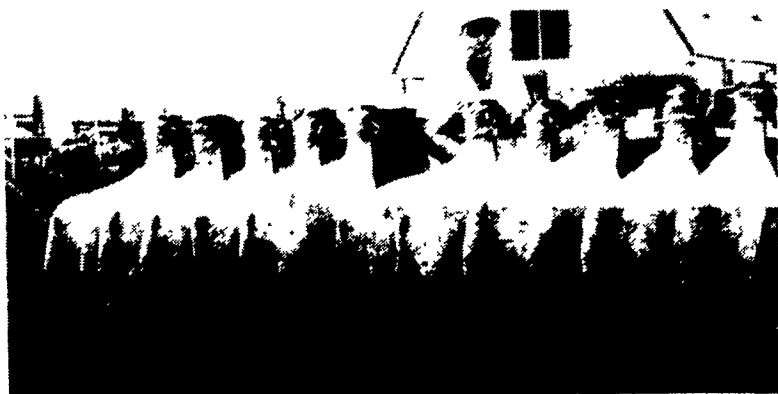
EYSTONE CONCRETE PRODUCTS INC.

477 East Farmersville Rd.
New Holland, PA 17557
(717) 535-2301

"WAFFLE SLAT"
Syll Con Corporation



MEAT MATTERS MOST



Lambs Out Of My National Champion Ram "LIMO" Look Great. I Have Several Super Wether Lambs and Ewe Lambs. I Have Saved A Few Outstanding Ram Lambs. Call Now For An Appointment

1994 LAMBS ARRIVE NOW!
Robert Dinsmore

5842 Broad Run Rd., Jefferson, MD 21755

1-800-331-9122 Evenings 301-371-4483

GREENCASTLE LIVESTOCK MARKET, INC.

Off Exit 3 of I-81
GREENCASTLE, PA. 17225

**SALES EVERY
MONDAY at 2:00 P.M.
THURSDAY at 1:00 P.M.**

HAY & STRAW SALE EVERY MONDAY at 10:00 A.M.
GRADED FEEDER CATTLE SALES EVERY MONDAY

of Every Month
FEEDER CATTLE SALE 1st Friday of Every Month at 9:15
Poultry, Eggs, Rabbits & Produce Sale
Every Wednesday at 8:00 P.M.

Charles "Jim" Metz,
OFF. MGR.
Res. (301) 739-4470

Jeffrey S. Craig,
OWNER
Res. (717) 532-5224

OFFICE - 717-597-2171



"FEEDER CATTLE SALE"
FRIDAY EVENING, May 6 - 7:15 P.M.
1000 Head

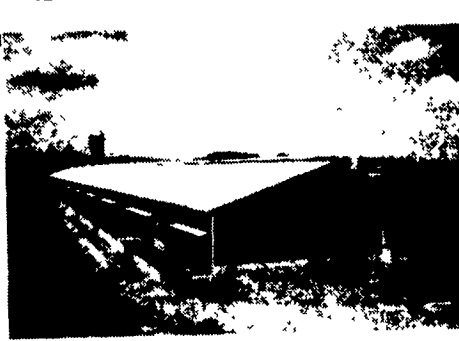
Slatted Hog Barn



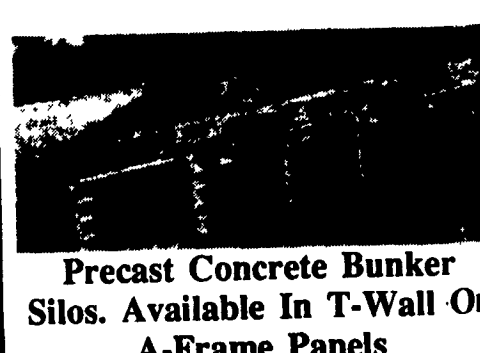
Slatted Heifer Barn



Slatted Beef Barn



Bunker Silos



Precast Concrete Bunker Silos. Available In T-Wall Or A-Frame Panels