

35 TRUCKS & TRAILERS

9" Ford Posi rears, also 3/4 ton Dana rears. (717)769-6720.

Carrier electra trailer refrigeration unit, refrigerated or frozen applications, unit in good condition Phone (717)788-2427.

Diesel Engines. Detroit, 318, 16V71, 12V71, 671, V-653, 6V92, 8 2, Chev diesel 6 2 Other engines and truck parts Reasonable prices Call after 6PM, (610)944-9871

FOR SALE Horse Trailer Thoroughbred size with roof hay rack, solid floor, rubber mats, older model in good shape, ready for Spring rides Asking \$1,000 (717)949-2089

Ford Dump L800 10'x7 1/2' box, 391 gas engine, 36,000GVW, air run to rear for pulling lowboy, pindle hitch. \$4500 717/682-9337

For Sale: 10,000 lb. flatbed trailer, with pockets and 6000 16 Ramsey winch tandem axles and brakes, \$1,750. (717)367-4068.

WANTED TO BUY: Snowplows, parts, pumps, mounting frames, blades, whatever you may have! 717-726-7545

Wet line, PTOs to fit Mack 7 speed, Spicer 7 speed, Fuller 9 speed, 18,000 lb front axle (717)382-4881.

MOTORS
New & Rebuilt
350, 366,
427, 454
6.2 Diesels
Rebuilt & Used
Will Install
Roll Back Service
(at cost)
717-762-6415

1978 FRUEHAUF REEFER TRAILER FOR SALE

Refrigerated 43 Ft. Traller
With Roll-up Door

CALL ZOOK MOLASSES CO.
610-273-3776 or
800-327-4406
or stop by our office located on
W. Main St., Honey Brook, PA

TRUCKCRAFT



PICKUP INSERT DUMPER
For FREE brochure, call toll free 24 hr.
1-800-755-3867



USED EQUIPMENT

GOOSENECKS

New Eby 24'x7'x8'6"
1992 Eby 20'x8'x7' Deck
Rail
1988 Barrett 24'x8'x6'6"

BODIES

28 Ft. Eby Aluminum Double Deck Livestock Body
21 Ft. Eby Body on International Chassis
16' Midwest Grain Body
(2) 12' Eby Aluminum Cattle Body
1982 20 Ft. Hostetter Cattle Body on '82 GMC Truck

HORSE TRAILERS

1990 Eby 33'x8'x7'6" GN 6 Horse & Carriage
1988 Phillips 14'x6'x7'6" GN 2 Horse Exc. Condition
1989 S&S 18'x7'6"x7' BH Horse Carriage Combo
1979 Kingston 14'x6'x7' BH 2 Horse With Tack Room

M.H. Eby, Inc.

1194 Main Street (Route 23)
Blue Ball, PA 17506
(717) 354-4971 (800) 292-4752
FAX: (717) 355-2114
4435 State Route 29
West Jefferson, OH 43162
(614) 879-6901 (800) 752-0507
FAX: (614) 879-6904

Agriculture Moves on EBY Bodies

M.H. Eby custom-builds aluminum truck bodies for the agri-transportation market. Nobody offers more sizes and options in:

- **LIVESTOCK BODIES** - Lengths to 32', choice of heights and widths.
- **GRAIN BODIES** - Lengths to 24'; landscape and general purpose dumps to 12'.
- **FLATBED BODIES** - Lengths to 32', choice of 5 widths.

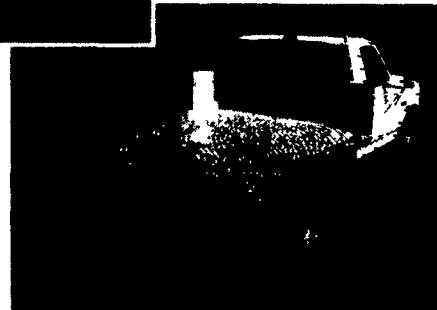
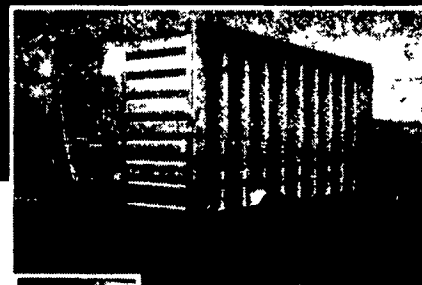
For greater payload capacity, Eby's aluminum design is equal in strength to steel and up to 40% lighter. Our corrosion-resistant components never need painting. That means minimum maintenance, improved appearance and higher resale value.

Eby products have superior standard features. And we offer custom options for virtually any application. Agriculture is your business- building bodies to haul it is ours.



M.H. EBY, INC.

1194 Main Street (Rt. 23) • Blue Ball, PA 17506 • 800/292-4752 • 717/354-4971 • FAX 717/355-2114
4435 State Route 29 • West Jefferson, OH 43162 • 800/752-0507 • 614/879-6901 • FAX 614/879-6904



Let EBY custom build one for you.

ATTENTION

SAM'S
Club Members:

NEW FORD CARS & TRUCKS
USED VEHICLES ALSO

WHY PAY RETAIL?
1-800-856-0032

Sam's Club Members Only!

HEAVY DUTY • LIGHT DUTY • DUMP BODIES • STAKE BODIES • UTILITY BODIES • VANS • CHASSIS CABS • CUBE TRUCKS

<p>NEW '94 CHEVY K3500 Extended Cab 4x4 6.5 turbo diesel, auto, 4.10 rear, 10,000 GVW, off road skid plate, slide rear wind #4703 \$25,995</p>	<p>NEW '94 CHEVY C3500 with 12' Reading Stake 350 V8, auto, 4.10r, HD chassis, 11,000 GVW, \$18,995</p>	<p>NEW '94 CHEVY C3500 Heavy Duty 15,000 GVW, 6.5, Turbo diesel, 4.63 rear, auto trans, AM/FM stereo, #4747 \$22,995</p>	<p>NEW '94 CHEVY K2500 4x4 305 V8, auto, snow plow prep, 3.73 rear, AC, stereo, HD, front springs, tachometer, #4752 \$18,995</p>	<p>NEW '94 CHEVY K1500 4x4 Silverado Turbo Diesel 4x4, 6.5 turbo diesel, trailering equip, AC, cruise, tilt, wind & locks, Loaded! #4065 \$22,295</p>	
<p>NEW '94 CHEVY CREW CAB 4x4 Diesel Silverado 6.5L, turbo, diesel, auto trailer pkg, 4.10 rear, dual rear whls, 10,000 GVW, #4764 \$31,995</p>	<p>NEW '94 CHEVY K3500 Turbo Diesel 4x4 6.5L, 10,000 gvw, locking differential, HD trailering equip, silverado, Loaded! #4684 \$28,995</p>	<p>OVER 200 TRUCKS AVAILABLE</p>		<p>NEW '93 CHEVY C2500 Heavy Duty Silverado 6.5 turbo diesel, auto, 4.10 rear, lock differential, 8600 GVW, pwr lcks & wind, trailer pkg, #3330 \$18,995</p>	<p>NEW '94 CHEVY CREW CAB "Centurion Conversion" 6.5L, turbo diesel, 10,000GVW, Austin Pkg, diamond plate run boards, More! #4522 \$31,995</p>

FRED BEANS CHEVROLET TRUCKS
Rt. 611 North Doylestown, PA

Call Our Commercial Truck Dept...
(215) 348-3586
1-800-341-3232

\$100 TRAVEL EXPENSE VOUCHER

Pay To The Order Of _____

Good for travel expense if you live more than 30 miles from Fred Beans Chevrolet Oldsmobile with the purchase of a new or pre-owned car or truck. One voucher per customer only. Must be authorized by your salesperson. A check for \$100 will then be mailed to you.

Salesperson Authorization _____