

es About Beef During Tour

Oley Valley. Reider said there are elements of how a farm operates and how animals use feed in the growth cycle that he can use in teaching high school science.

With the participation of the beef commodity promotion organizations, including the Berks Southeast Cattlemen's Association and the Pennsylvania Beef

Council, there were demonstrations of how cow-calf and finishing farms operate.

The Beef Council supplied handouts. In addition, a Beef Council nutritionist, Barbara Ford, spoke about the significance of using nutritional educational materials available from the Council as part of classroom activities.

Palmer and Son Farm

Bill Palmer helps manage the W.T. Palmer and Son farm in Shartlesville, which finishes out

about 150 head of cattle a year. They maintain about 300 acres (280 tillable) and finish off Simmental/Angus crosses.

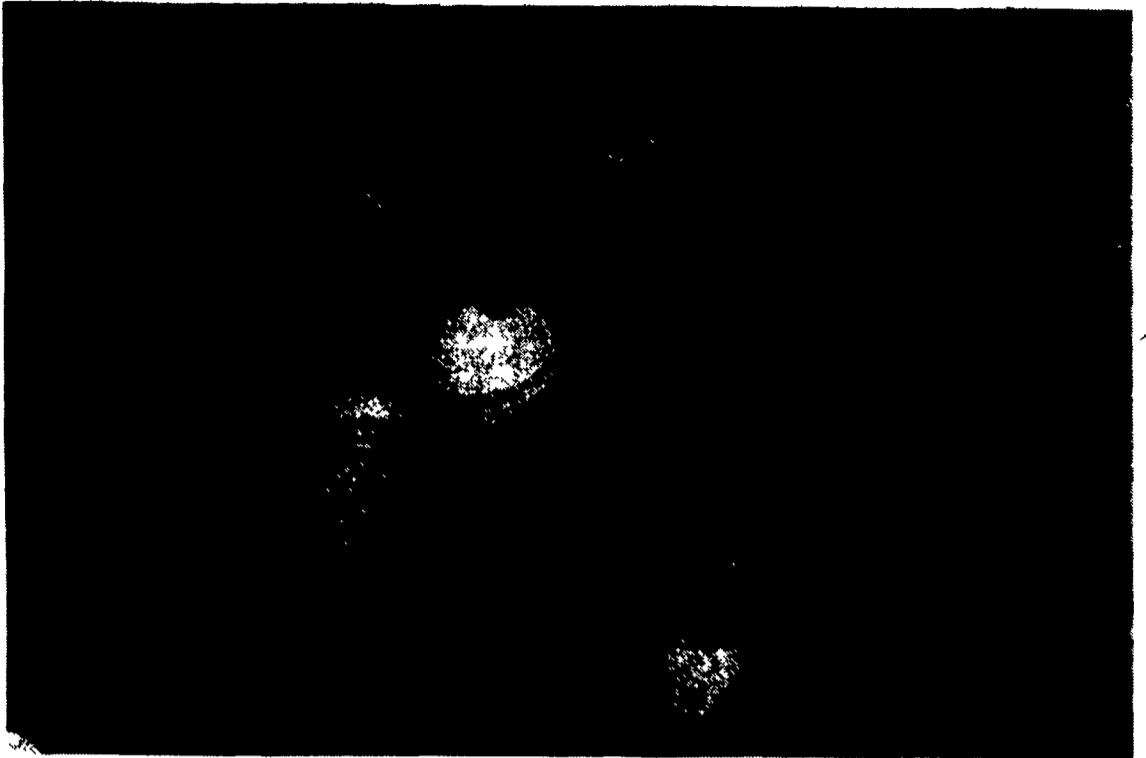
Palmer said his farm hosted the Farm-City Day on a weekend last

November, of which 400 toured the facilities. "Some of them never saw a cow or steer before," he said. "They asked all kinds of questions."

(Turn to Page A24)



Barbara Ford, coordinator of the health/nutrition programs for the Pennsylvania Beef Council, showed the many different types of student instruction packages available.



Bill Palmer showed the teachers the types of feed used and provided information on how that feed is used by the animals at different stages of growth. Here he shows a container of soybeans.

PARTS COUNTER

Because the work is never done, you need performance you can count on to keep you moving. Make sure your engines are up to the task with quality John Deere maintenance parts and lubricants.

Hard-working engines deserve the extra protection of John Deere Torq-Gard Supreme® Plus 50 oil. Tests show it reduces engine wear as much as 30 percent and oil change intervals can be extended 50 hours. Check our low "out-the-door" prices.

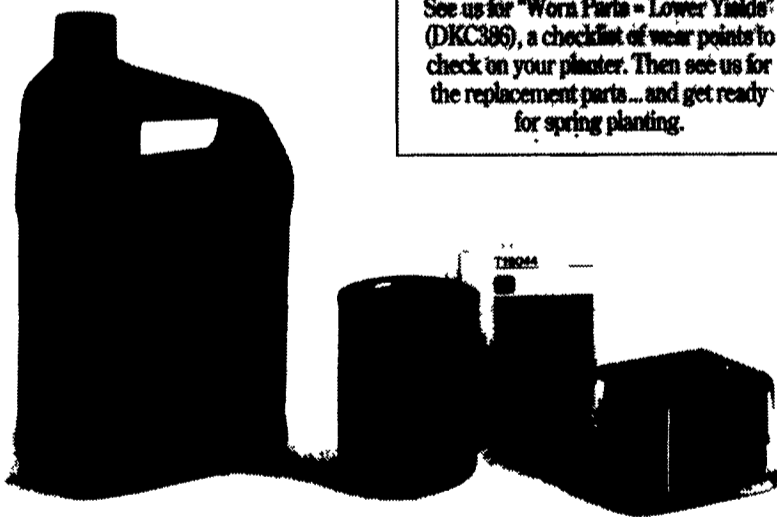
Trap dirt and other engine contaminants with this genuine John Deere oil filter for most John Deere 10, 20, 30, 40, and 50 Series Utility Tractors. Only \$3.62* (T19044)

Keep engines running dependably and efficiently with this John Deere fuel filter that fits many John Deere tractors, combines, windrowers, and forage harvesters.

Only \$8.69* (AR50041)

* John Deere dealers are independent retailers who determine their own prices, so actual selling prices may vary from the prices shown. Offer good through April 30, 1994

Check Your Planter Now!
See us for "Worn Parts - Lower Yields" (DKC386), a checklist of wear points to check on your planter. Then see us for the replacement parts... and get ready for spring planting.



Included in the tour was an explanation of the steps involved in stunning, cleaning, cutting, and further processing. Working on carcass is Rex Peters, and in foreground is Clyde Myers, Berks extension agent.



Rex Peters, center in white coat, was on hand to show the teachers how steers are stunned at the processing facility in Lenhartsville.

LAND... INC.
Lanc... PA
717-...
LE... AG
EQUIPMENT
AM... PA
610-...
LO... PLE
SALES SERVICE
New A... PA
412-...
LO... EK
IM... NT
Oak... PA
717-...
MIL... INC.
Ber... PA
717-...

MILLER'S
EQUIPMENT
RD #1 Rt. 66
Fairmount City, PA

PIKEVILLE
EQUIPMENT INC.
Oley, PA
610-987-6277

POLE TAVERN
EQ. SALES CORP.
Elmer, NJ
609-358-2880

SCHEFFEL
EQUIPMENT CO.
Red Goose Rd.
Somerset, PA
610-445-6500

GEORGE V. SEIPLE
& SON
Easton, PA
610-258-7146

SMITH'S
IMPLEMENTS, INC
Mercersburg, PA
717-328-2244

S.P.E., INC.
Rd. 1, Box 157
Towanda, PA
717-285-4440

TOBIAS
EQUIPMENT CO., INC.
Hallfax, PA
717-382-3132

JOHN DEERE



WALTEMYER'S
SALES & SERVICE
Red Lion, PA
717-244-4168

WINELAND
EQUIPMENT, INC.
Martinsburg, PA
614-793-2109

M.S. YEARSLEY
& SONS
West Chester, PA
610-696-2990

