

National Grain Market

St. Joseph, Mo.

Wednesday, April 6, 1994

DAILY NATIONAL GRAIN SUMMARY GRAIN AND SOYBEAN PRICES CONTINUED TO CLIMB ON TUESDAY'S CLOSING STRENGTH. WHEAT 2 TO 8 CENTS HIGHER. CORN 1 TO 2 CENTS HIGHER. SORGHUM 2 TO 3 CENTS HIGHER. SOYBEANS 4 CENTS HIGHER. EXPORT DEMAND AND OPTIMISM FOR CHINA'S BUSINESS CONTINUED TO SUPPORT WHEAT PRICES. SOME CONCERNS OVER FREEZING TEMPERATURES IN SOUTHERN PLAINS AREAS, ADDED TO PRICE GAINS. RECENT SNOW COVER, HOWEVER, IN DRY AREAS OF KANSAS, LIMITED UPTURN. CORN PRICES INCHED SLIGHTLY HIGHER, ON INCREASED FARMER SELLING. SLACK EXPORT DEMAND AND SPILLOVER STRENGTH FROM WHEAT AND BEANS PRICES, UNDERPINNED PRICES. REPORTS THAT PORTUGAL WILL TENDER FOR 70,000 METRIC TONS U.S. CORN THIS WEEK LENT SOME SUPPORT. HIGHER SOYBEAN PRICES WERE INFLUENCED BY LIGHT EXPORT INTERESTS AND FUND BUYING ON THE BOARD. RAIN DELAYED HARVEST IN BRAZIL AND FORECASTS FOR ADDITIONAL WETNESS THERE GAVE U.S. BEAN PRICES A BOOST.

EXPORT NEWS: USDA ACCEPTED ONE BID TO SELL 30,000 TONNES HARD RED WINTER WHEAT TO YEMEN UNDER BFP FOR MAY/JUNE SHIPMENT. JAPAN BOUGHT 57,141 TONNES DARK NORTHERN SPRING

WHEAT AND 38,094 TONNES HARD RED WINTER WHEAT FOR MAY SHIPMENT. TAIWAN BOUGHT 54,000 TONNES NO. 2 YELLOW SOYBEANS FOR APRIL/MAY SHIPMENT.

DATE CHANGE YEAR AGO TRUCK BIDS: 04/06/94 04/05/94 04/07/93 WHEAT: KANSAS CITY 3.64-3.66 UP 6 3.62-3.65 MINNEAPOLIS 4.53 1/2 UP 4 3/4 3.95 PORTLAND 3.50-3.52 UP 3-2 3.73-3.76 ST. LOUIS 3.38-3.42 UP 8 4.02-4.05.

CORN, U.S. NO. 2 YELLOW: KANSAS CITY 2.81-2.83 UP 1 2.31-2.33 MINNEAPOLIS 2.71 3/4 UP 1 1/4 2.28 1/2 SO. IOWA 2.79-2.80 UP 2 2.34-2.38 OMAHA 2.67-2.68 UP 2 2.18-2.20.

SOYBEANS, NO. 1 YELLOW: KANSAS CITY 6.72-6.73 UP 4 5.90-5.93 MINNEAPOLIS 6.52 UP 4 5.85 1/4 SO. IOWA 6.57-6.61 UP 4 5.91-5.95 C. ILL. PROCESSORS 6.64-6.70 UP 4 5.95 1/4-6.05 1/4.

*TRUCK BIDS FOR KANSAS CITY, US NO. 1 HARD RED WINTER WHEAT, ORDINARY PROTEIN. MINNEAPOLIS, US NO. 1 DARK NORTHERN SPRING WHEAT, 14% PROTEIN. PORTLAND, NO. 1 SOFT WHITE WHEAT, ST. LOUIS, NO. 2 SOFT RED WINTER WHEAT.

FUTURES CLOSE: KANSAS CITY (MAY) WHEAT 3.43 3/4 UP 5 3/4 3.30 3/4 MINNEAPOLIS (MAY) WHEAT 3.48 1/2 UP 4 3/4 3.35 CHICAGO (MAY) WHEAT 3.46 1/4 UP 8 1/2 3.44 1/2 (MAY) CORN 2.77 3/4 UP 1 1/4 2.31 1/2 (MAY) SOYBEANS 6.58 UP 4 5.97 1/4.

EXPORT: BARGE OR RAIL, PORT OF NEW ORLEANS OR NORTH TEXAS GULF. NO. 1 HARD RED WINTER WHEAT ORDINARY PROTEIN 3.95 3/4 UP 8 3/4-7 3/4 3.95 3/4-3.97 3/4 NO. 2 SOFT RED WINTER WHEAT 3.71-3.72 1/4 UP 8-6 1/2 4.24 1/2-4.29 1/2 NO. 2

YELLOW CORN 3.00-3.01 UP 2 1/2-1 1/2 2.58 1/2 NO. 2 YELLOW SORGHUM RAIL 5.07 UP 3 BARGE 5.08 NC 4.37-4.40 NO. 2 YELLOW SOYBEANS 6.84-6.85 UP 3-1 6.20-6.20 1/4 BIRD.

THIS REPORT A SERVICE OF U.S. DEPARTMENT OF AGRICULTURE, LIVESTOCK AND GRAIN MARKET NEWS, ST. JOSEPH, MISSOURI.

25; Select and low Choice 2-3 1050-1425 lb 66.75-71.00.

HOLSTEINS: Choice 2-3 1185-1565 lb 62.00-63.75; few High Choice and Prime 2-3 1200-1550 lb 63.75-66.00; Select 1-3 1100-1450 lb 59.00-61.50.

SLAUGHTER HEIFERS: Choice 2-3 950-1250 lb 66.50-72.25; couple lots mixed Choice and Prime mostly 3 1050-1100 lb 72.85-73.00; few Choice 2 1200-1350 lb 72.75-74.50; Select 1-3 950-1150 lb 62.00-65.00.

COWS: LOW DRESSING BULK HIGH DRESSING Breaking Utility & Commercial 2-3 46.00-48.00 48.50-49.00 Cutter & Boning Utility 1-2 43.00-47.00 Canner & low Cutter 38.00-40.00 40.00-43.00.

BULLOCKS: Choice 2-3 1100-1400 lb 66.00-69.50, few 70.25-74.75; Select 1-3 1050-1350 lb 61.75-63.75.

BULLS: Yield grade 1 1200-2100 lb 60.00-67.75, couple 69.00-69.50, five head 1585-2000 lb 70.00-76.25; Yield grade 2 1000-1550 lb 57.50-60.50, few low dressing 55.00-57.00.

CALVES: Vealers not fully tested, few high Good and low Choice 80-110 lb steady.

VEALERS: Few high Good and low Choice 80-110 lb 45.00-55.00.

HOGS: Barrows and gilts 1.00-1.50 higher; sows 50-1.000 higher.

BARROWS AND GILTS: US 1

220-245 lb 44.00-45.00. US 1-3 210-260 lb 41.50-43.00.
SOWS: US 1-3 300-500 lb 36.00-38.00. 500-650 lb 40.00-42.50.
BOARS: All Weights 30.00-31.50.
SHEEP: Woolled lambs 5.00-10.00 higher; New Crop Lambs mostly steady; slaughter ewes firm to 5.00 higher. Supply included 50% woolled lambs, 20% new crop lambs, with the balance slaughter ewes.
WOOLED LAMBS: Choice 2-3 80-100 lb 55.00-65.00, 100-130 lb 50.00-55.00, few 60-80 lb 60.00-75.00.
NEW CROP LAMBS: Choice 1-2 50-80 lb 70.00-100.00, 25-50 lb 80.00-110.00.
SLAUGHTER EWES: Choice 1-3 30.00-40.00; Utility and Good 1-3 18.00-35.00.
GOATS: All goats sold by the head.
BILLIES: Bulk 75.00-100.00, few 50.00-75.00. NANNIES: Bulk 40.00-45.00, few 30.00-40.00. YEARLINGS: Choice 40.00-45.00; Good 35.00-40.00. KIDS: Choice 25.00-35.00; Good 15.00-25.00.

Leesport Livestock Auction

Leesport, Pa.

Wednesday, April 6, 1994

Report Supplied by Auction

CATTLE 340.. Supplied by the auction .. Supply included 84 feeder cattle .. Compared to last Wednesday's market..sl. steers steady to 1.00 higher, sl. cows 1.00 to 1.50 lower. STEERS: Choice 71.00-73.75, Select and Low Choice 68.00-72.50, Select 66.00-70.00. HOLSTEINS: High Choice and Prime 65.00-67.75, Choice 63.00-66.00, Select

58.00-63.50, Standard 55.00-60.00. HEIFERS: Choice 66.00-71.75, Select 63.00-67.25, Standard 53.00-60.00. COWS: Breaking Utility and Commercial 43.50-48.25, Cutter and Bon. Utility 44.25-48.75, Canner and Low Cutter 38.00-44.25. BULLS: Yield Grade No. 1 60.00-64.00, No. 2 53.00-58.50. FEEDER CATTLE: Steers: Large Frame No. 1 & 2 350/565 lbs. Holsteins 69.00-78.00, one Large Frame No. 2 800 lbs. 59.75-62.25; Heifers: Medium Frame No. 1 400/600 lbs. 60.00-75.00, Medium Frame No. 2 500/800 lbs. 45.00-60.00; Bulls: Large Frame No. 1 & 2 600/874 lbs. 57.00-60.00. CALVES 104..VEALERS: Choice 150/250 lbs. 80.00-105.00, Standard and Good 65/105 lbs. 45.00-60.00. RETURNED TO FARM: No. 1 Holstein bulls 85/125 lbs. 129.00-143.00, No. 2 80/110 lbs. 95.00-135.00; No. 1 Holstein heifers 90/120 lbs. 170.00-217.50. Beef cross bulls and heifers 70/95 lbs. 105.00-170.00.

HOGS 256..Barrows and gilts 1.00 higher than last week. BARROWS AND GILTS: US 1-2 225/260 lbs. 41.50-43.75, US 1-3 228/272 lbs. 38.75-41.25. SOWS: US 1-3 300/410 lbs. 32.00-36.50, 425/660 lbs. 42.00-44.00, US 2-3 270/380 lbs. 28.00-33.00. BOARS: all weights 28.50-32.00.

FEEDER PIGS 282.. 50% sold for slaughter only ..US 1-3 22/60 lbs. 63.00-85.00, one lot 115.00--- per cwt.

SHEEP 52..Choice 20/80 lbs. Spring sl. lambs 70.00-92.50, few Choice 150/175 lbs. Woolled sl. lambs 45.00-55.00. Slaughter sheep: 15.00-26.00.

GOATS 11..Medium 30.00-65.00, few Large Billies 99.00, few Small 25.00-30.00. -- per head.

A & C

Diffenbach Auction Inc.

100 West Jackson Street • Box 186 • New Holland, Pennsylvania 17557

Office: (717) 355-7253 • FAX: (717) 355-9547

HAY & GRAIN SALE EVERY MONDAY - 10:00 A.M.

SAT. ALSO	APR. 23	SPRING TRACTOR SALE	10:00 A.M.
	APR. 23	ABSOLUTE AUCTION OF FARM EQUIP. FOR ABC GROFF INC.	11:30 A.M.
WED.	MAY 4	WINROSS TRUCKS & TOYS	6:30 P.M.
FRI.	MAY 13	FARM EQUIP, TRACTORS & SUPPLIES	9:00 A.M.

EQUIPPED FOR AN AUCTION AT YOUR PLACE OR OURS

ALAN DIFFENBACH AUCTION - AU2258-L

Kilm Dried WOOD SHAVINGS and SAWDUST

- Great for dairy or horses
- Delivered in trailer load lots
- Year round supply
- Reasonably priced

717-653 5935

J.D. Martin Inc.

Mount Joy, PA



Hay And Straw Sales Will Start At 10 A.M. Every Wed.

GOOD'S AUCTION

11 North Maple Ave.

Leola, PA 17540

717-656-8911

717-656-9554

NEW HOLLAND SALES STABLES INC. THE ACTION AUCTION

LIVESTOCK IS OUR ONLY BUSINESS

MONDAY

SLAUGHTER HOGS
EARLY BIRD HOG SALE
7:30 A.M.

Sell Your Hogs At New Holland Sales Stables, Inc.
See them weighed, sold and pickup your check.



10:00 A.M.
HORSES
MULES



1:30 P.M.
BEEF SALE
SHEEP
GOATS
CALVES



WEDNESDAY

HEIFER SALE 11:00 A.M.
COW SALE 12:00 NOON



We have the usual run of 50 to 100 Heifers, all ages. Loads of fresh cows and springers from our regular shippers. Also some local fresh cows and springers.

THURSDAY

Beef Auction 10:00 A.M.



BULLS, STEERS,
BEEF COWS



1:00 P.M.
STOCKERS & FEEDERS



11:30 A.M.
SHEEP
GOATS
CALVES



1:30 P.M.
FEEDER PIG SALE



Pigs are accepted after 6:30 A.M. State graded from 8 to 12. Dairy Barn and Feeder Pig Barn are cleaned and disinfected weekly for your protection.

NEW HOLLAND SALES STABLES, INC.

12 Miles East of Lancaster Off Route 23, New Holland, Penna.

MANAGERS

Norman & David Kolb - 717-397-5538

Field Representatives

Luke Eberly - 215-267-6808 738-1865

Homer Eberly - 215-267-3047

Ron Ranck - 717-666-9849

Sale Barn Office Manager

Roger Floyd - 717-354-4341

FAX #717-355-0708

Order Buyer

Paul Good - 215-445-8882

NEED TO CUT THE FEED BILL?

NEW DAIRY BLEND COMPLETE AND CONCENTRATE FEEDS

COMPLETE FEEDS

#79516

Dairy Blend Flakes
16% All Natural
\$165⁷⁵

#79518

Dairy Blend Flakes
18% All Natural
\$174³³

#79520

Dairy Blend Flakes
20% All Natural
\$183¹¹

CONCENTRATE FEEDS

#51232

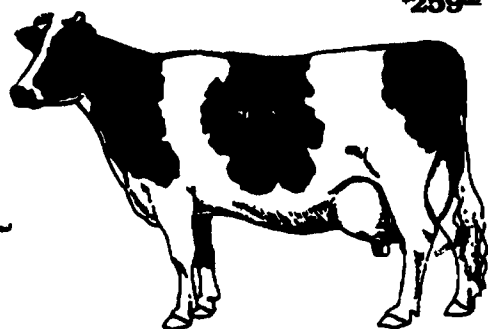
32% All Natural
Protein Pellets
\$222²²

#51238

38% All Natural
Protein Pellets
\$246²²

#50734

34% All Natural
Protein Pellets
w/Steam Flaked Soybeans
\$259²²



Bulk Feed Available in 1 to 24 Ton Loads

Feed prices for Week of April 11 and Subject to Change Weekly with Grain Market

Includes 8 ton volume discount and cash discount of 2.5% due 15th following month. Deduct additional \$3.00 per ton if paid in 10 days



pennfield feeds