

## Public Auction Register

Closing Date-Monday 5:00 P.M.  
of each week's publication

FRI SEPT. 9 - 1:30PM, State Graded Feeder Pig Sale Located At Carlisle Livestock Market, Inc. Exit 12 South Off I-81 Left Onto Alexander Spring Road (717) 249-4511

SAT SEPT 10 - 3:30 PM Pa Yorkshire/Duroc/Hampshire Assoc fall sale, Lebanon Area Fairgrounds, Leb Pa Harry H Bachman, auct.

SAT SEPT. 12 - 9AM Lebanon Valley Auction Co fall machinery consignment

auction, Lebanon area fairgrounds, Lebanon, Pa Harry H Bachman, auct

SAT, SEPT. 17 - 10AM, Mel's Stable Selected Consignment Horse Sale Located At 834 Wallace Rd., New Holland, Pa From Rt 23 in New Holland, Go South On Brimmer Ave Go 2 Miles South On New Holland Road To Hill Rd Turn Left On Hill Rd Proceed 1.2 Miles To Sale On The Left. From Rt 340 East Of Intercourse

Take New Holland Rt. 2.5 Miles to Hill Rd., Right On Hill Rd to Sale On Left. Mel Hoover, Auctioneer.

FRI. SEPT. 23 - 1:30PM, State Graded Feeder Pig Sale Located At Carlisle Livestock Market, Inc. Exit 12 South Off I-81. Left Onto Alexander Spring Road (717) 249-4511

FRI. SEPT. 23 - 7PM Disaster Relief heifer auction, Lebanon Area Fairgrounds, Lebanon, Pa Harry H Bachman, auct

SAT SEPT 24 - 10AM, Heifer Sale Reg & Grade Hols Located New Holland Sales Stables Inc., 101 W Fulton St., New Holland, Pa. Norman Or David Kolb, Aucts

WED SEPT. 28 - 34 Acre farm Farm machinery, personal property, antiques. From Rt 897 in Fivepointville, take Fivepointville Road approx 2 1/2 miles to farm on right Brecknock Twp Lanc Co Also known as 888 Fivepointville Rd By Daniel H and Lydia W Martin Kline, Kreider, Good, aucts

FRI SEPT 30 - 7PM, Feeder Cattle Located New Holland Sales Stables Inc., 101 W. Fulton St., New Holland, Pa Norman Or David Kolb, Aucts

## OCTOBER

SAT. OCT. 1 - Farm Equipment, Orchard Equipment, Personal Property. Located From Bowmansville Take Route 625 North Approximately 1 1/4 Mile Turn Left On E. Bowmansville Road To T Turn Right Onto Bowmansville Road To Orchard Road Turn Left Go Approximately 3/4 Mile To Property On Right (Known As 390 Orchard Road). Terms By, Amazie Zimmerman. Kline, Kreider & Good Aucts.

FRI. OCT. 7 - 6PM Hampshire & Yorkshire Keystone Classic, KILE, Farm Show Complex, Harrisburg, Pa. Harry H. Bachman, auct.

FRI. OCT. 7 - 7PM, Horse Sale. Located New Holland Sales Stables Inc., 101 W. Fulton St., New Holland, Pa. Norman Or David Kolb, Aucts.

FRI. OCT. 14 - 1:30PM, State Graded Feeder Pig Sale. Located At Carlisle Livestock Market, Inc. Exit 12 South Off I-81. Left Onto Alexander Spring Road. (717) 249-4511.

FRI. OCT. 14 - 7PM, Feeder Cattle. Located New Holland Sales Stables Inc., 101 W. Fulton St., New Holland, Pa. Norman Or David Kolb, Aucts.

SAT. OCT. 15 - Arnold Hog Production Sale, Lebanon

Lancaster Farming, Saturday, April 9, 1994-E37

Area Fairgrounds, Lebanon, Pa. Harry H. Bachman, auct.

SAT., OCT. 22 - 10AM, Mel's Stable Selected Consignment Horse Sale. Located At 834 Wallace Rd., New Holland, Pa. From Rt 23 in New Holland, Go South On Brimmer Ave. Go 2 Miles South On New Holland Road To Hill Rd. Turn Left On Hill Rd. Proceed 1.2 Miles To

Sale On The Left. From Rt. 340 East Of Intercourse Take New Holland Rt. 2.5 Miles to Hill Rd., Right On Hill Rd. to Sale On Left. Mel Hoover, Auctioneer.

WED. OCT. 26 - 11AM, Sale. Judging 9AM. Annual Dairy Show & Sale. Located New Holland Sales Stables Inc., 101 W. Fulton St., New Holland, Pa. Norman Or David Kolb, Aucts.

## Complete Herd Dispersal

### Belleville Livestock Market

### Wednesday, April 13, 1994

### 1:30 P.M.

A Clearfield County herd of 83 registered and grade Holsteins consisting of 45 cows - 16 registered, 8 bred heifers, 30 open heifers & calves - 20 registered.

**Selling are:** A Berlin Dau. fresh Dec. milked 110 lbs. on March test. Proj. over 25,000.

A Chairman Dau. Due July - March test 72 lbs. Proj. 22,900. Her 3 milking daughters & 2 open daughters also selling - nice family.

A Cleateus Dau. due April - real nice. A grade family, Dam - fresh Jan. 99.1 lbs. March test. 1st daughter just fresh - last lactation 29,500 - 377 days. 2nd daughter Proj. over 27,000 lbs.

Lots of production, rolling average 19,390m, 660f, 613 Pro - 65.4 lbs daily on milking cows. 14 cows currently Proj. 20,000 - 27,800.

D.H.I.A. transfers sale day. Health charts, certified and accredited.

Consigned by: **Curtis Yaple**  
Yaple Family Farm

For more information call:  
**Gene Gluck 717-667-2703**  
Test your heifers now for the  
Spring Heifer Sale On  
Friday, April 29

## CONSIGNMENT SALE

### OF FEEDER PIGS & FEEDER CATTLE

### FRIDAY, APRIL 15, 1994

at 6:30 P.M. Sharp

Held at **Keister's Middleburg Auction Sales, Inc.**, Rt. 522, 3 miles east of Middleburg, PA., 5 miles west of Selinsgrove, PA.

Early consignments accepted  
Bring a load - buy a load

For information call  
717-837-2222, 717-966-2856  
or 717-523-0360  
Terms: Cash



Owners,  
**DON & WALT KEISTER**

Auctioneers:  
**Bryan Ines & Ray Long**  
Restaurant Open

110 REGISTERED & GRADE HOLSTEINS



HERD DISPERSAL

## THURSDAY, APRIL 14 \* 11 AM

Intercourse, PA  
FEATURING A HERD DISPERSAL

Milking herd dispersal for Laine Heillein, Buckingham, Pa! 40 High Production Young Cows In All Stages Of Lactation!  
Herd Average 19,500 Milk 3.7% Fat 3.3% Protein BAA 104.2% \* Low Somatic Cell Count \* Herd Is Johns Free

\* A SAMPLING OF THIS FINE HERD \*

- \* A VG-88 Starbuck sells fresh milking 100 lbs./day! Born 1/20/90!
- \* A VG-86 Starbuck sells due 10/10 to Benchmark with 3-04 23,682M 3.5% 828F 3.3% 781 Protein!
- \* A VG-85 Beautician dtr. sells due 7/26 to Merrill & Finishing with 17,000M 4.0%F 3.3%P at 2-08!
- \* A Fresh VG-87 Mandingo sells with 4-02 23,226M 4.0%F 929F 3.3% 766P!
- \* A VG-87 Vanguard dtr sells with 4-02 19,212M 4.4% F & bred to Slocum!
- \* A Tong dtr. sells fresh after making 2-00 17,640M 3.1%P!
- \* Chairman dtr. sells with 3-06 22,589M 4.1%F, on service to Merrill!
- \* Fresh Blackstar dtr sells milking 75 lbs./day!
- \* A Fresh Imprint 2 yr. old sells milking 60 lbs./day!

### MORE HIGH PRODUCTION CONSIGNMENTS

- \* Schultz Brothers are sending 4 very special young cows! A fresh Count sells milking 91 lbs. 3 9%F! Last record 3-04 308D 18,319M 4.1% 746F! Fresh Vanguard 3 yr. old sells milking 92 lbs. after making 2-02 366D 20,217M 3 6% 732F! Dam of the Count & Vanguard has 29,152M 3.5% 1018F! Also sending a Fresh Chairman 3 yr. old with 2-00 347D 15,258M 3.9% 595P and a Fresh Tong dtr. milking 71 lbs./day that made 2-00 365D 19,019M 3.8% 722F!
- \* Keystone Farm sends 4 high quality cows & bred heifers with records on dams exceeding 31,300M 3.3% 1015F!
- \* Hand selected from Shadowave, a tremendous group of young fresh cows and springing heifers with great production! Including
- \* A Fancy Calypso due after sale from a GP-83 dam with 19,690M. Grdam is VG-85 with 21,150M 4 0% 813F & 3rd dam is VG-85 with 27,570M 886F!
- \* A fancy Prelude dtr. born 4/93 sells from a GP dam with 17,412M 3.9%!
- \* Fresh Jubilant dtr sells milking 65 lbs.! Dam has 15,700M 3.6%F!
- \* A Fresh Aerostar dtr sells! Dam is GP-80 with 23,270M 3.5%F!
- \* A Fresh Tradition dtr sells from 3E-91 Swampy Hollow Sugar with 24,130M 5.2% 1263F & 19,000LT!
- \* A Fancy fresh United Nick dtr. sells milking 75 lbs./Day!
- \* Wea-Land Farm is sending a flashy Prelude dtr. from a VG-86 Dam with 4-04 342D 25,668M 3.5% 907F 3.4% 873! Grdam has 31,209M 3.4% 1174F!

\*\*\* Some Fancy yearlings and calves will be offered from high production dams! Grades and registered alike. The quality will be deep!\*\*\*

### SEMEN, EMBRYOS & SEMEN TANK SELL!

- \* 4 Embryos sell by Mandingo and 4 by Enhancer from an EX-90-GMD-Dom Conductor dtr with 4-06 365D 32,460M 3 7% 1201F 3 4% 1109P & 3 more records over 1000 Fat! Next dam is EX-90-GMD-DOM with 36,900M and 1086F 1160P & 3rd dam is EX-90!
- \* Semen selling includes 4 Jubilant, 4 Nittany, 2 Benchmark, 1 Mascot, 1 Fancy Paul, 4 Mark IV, 1 Blackstar & More!

### 3 SERVICE AGE SIRES SELL

- \* A Leadman son sells born 6/93 from a VG-87 dam with 2 records over 30,000M!
- \* A Prelude son sells born 1/93, ready to go! Dam is VG-88 with 26,338M 3.8% 1003F! Next 2 dams are VG & EX with records to 27,863M 1172F!

Sale held at the Ben K. Stoltzfus Farm, 1st farm East of Intercourse, Pa. on Rt. 340.  
\* Cattle are tested for immediate interstate shipment & inoculated against shipping fever!

\*\* Long distance trucking available \*\* Lunch \*\* Catalogs at ringside \*\*

\* As always, the great buys will be here! Many dairymen consider this sale the finest source of replacement cattle in the state! All cattle are represented honestly & accurately!

**Stonehurst Farm**

31 Lime Valley Road  
Lebanon, PA 17078  
Phone: Don Walk 717/667-7478  
717/667-8834

**The CATTLE EXCHANGE**

Dave Rama RD 2 Box 79 Delhi, NY 13753  
Ph 607/746-2226 Fax 607/746-2911



## Advance Notice Complete Dispersal

Something Special -  
E. Barnard Baily

### Pocopson Meadow Farm

Grade Herd of Dutch Belt Cows and Heifers. Records from 12,000 to 18,000m. Fresh cows, bred back cows, heifers 4 to 6 mo. old - Bred Heifers and calves.

To be held at Smoketown Quality Dairy Sales, Smoketown, PA Rt. 340, 5 miles East of Lancaster.

Friday, April 22, 1994  
8 P.M. D.S.T.

Sires - Best Yet James - Dutch Belt bulls out of Dutch Belt herd cows.  
Bred to Best Yet Bigo and Belted Bulls out of Belted Herd Cows.  
Also Selling 2 Line Back Bulls.

More Details Next Issue

Sale Managed By

**SMOKETOWN QUALITY DAIRY SALES**

Gordon & Helen Fritz

717-393-0930

## BROWNAWELL'S ANNUAL FEEDER CATTLE AUCTION

Friday Evening, April 29th, 1994  
6:30 P.M.

Located In Perry County, Approx. 3 1/2 MI. West of Dromgold's Corner, Off Pa Rt. 850 & 34, on Pisgah State Rd., West to Reiber's Church Rd., First Farm Past Reiber's Church.

**SELLING: 85 HEAD - FEEDER CATTLE**  
(10 HEIFERS - 75 STEERS)

All Wormed And Dehorned - Clean, Well - Fed, Top Quality Cattle. Approx. 1/2 Cattle Selling Are Holstein Or Holstein Cross, Balance Beef Breeds - Herefords, Black/White Face, Charolais, And Others. (Ranging In Wt. From 300 To 800 Lbs., Av. Wt. 400 To 500 Lbs.)  
**SALE MANAGER'S NOTE:** Norman has put together a fancy group this year, as in the past - the Holsteins are the right kind - the breeds are tall and big-boned cattle that are ready to take heavy feeding. Don't miss this Sale if you need some homegrown, acclimated feeders.

OWNER:

**Norman (Son) Brownawell**  
R.D. 1, Box 607, Shermansdale, Pa.  
717-582-2497

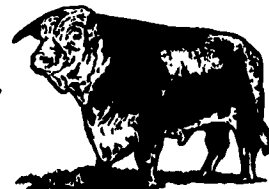


Sale Managed By: Killing's Auctions, Inc. Landisburg, Pa. 17040  
License #0500, Office #717-789-3883, I.D. Required for Bidder's Number, Not Responsible for Accidents.

## GREENCASTLE LIVESTOCK MARKET, INC.

Off Exit 3 of I-81  
GREENCASTLE, PA. 17225

**SPECIAL BROOD COW & BULL SALE**  
FRIDAY EVENING  
APRIL 15 at 7:15PM



**We Sell All Kinds of Beef Types**

- Breed Cows
- Calving Pairs
- Open Cows & Bulls

**Cows Will Be Pregnancy Checked Day of Sale**

**Charles "Jim" Metz,**  
OFF. MGR.  
Res. (301) 739-4470

**Jeffrey S. Craig,**  
OWNER  
Res. (717) 532-5224

OFFICE - 717-597-2171