

**NEW ITEM DISCOUNTS**

- 1 - Imperial 16 Ton Feed Bin
- 1 - Patz 98C Silo Unloader
- 1 - Patz 8810 Center Drive Silo Unloader
- 1 - Houle 32' Lagoon Pump (Demo Unit)
- 1 - Houle 20" Maxi Pump
- 1 - Fidelity 50 KW pto Generator

**USED ITEM DISCOUNTS**

- 1 - 3200 Gallon Harvestore Tank Spreader
- 1 - Patz Standard Drive Unit w/2HP Motor
- 1 - 25 KW Onan pto Generator
- 1 - 15 KW Onan pto Generator



**WITMER IMPLEMENT SERVICE**

**HOULE**

**Patz**

1896 BEDFORD ROAD • SHIPPENSBURG, PA 17257  
PHONE: (717) 532-6139 OR (800) 377-3011

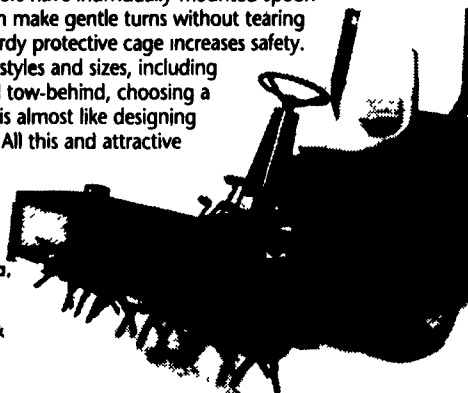
**Put a Front-Mount Millcreek Aerator on Your Commercial Mower.**

Get more production and profitability from your John Deere, Ford, Kubota or Excel Hustler up-front mowers by attaching a front mount Millcreek core plug aerator.

Millcreek aerators have individually-mounted spoon wheels so you can make gentle turns without tearing turf. And our sturdy protective cage increases safety.

With so many styles and sizes, including 3-point hitch and tow-behind, choosing a Millcreek aerator is almost like designing one for yourself. All this and attractive pricing too. Call today for your free information.

- Fits Ford, John Deere, Kubota, Excel Hustler
- 42", 63", 84"
- 3-point hitch & tow-behind models
- Economy Models Also
- Individual spoon wheels
- Safety cage included



**1-800-879-6507**  
2617 Stumptown Rd.  
Bird-in-Hand, PA 17505  
Dealer inquiries invited



- ✓ A 6-inch hydraulic operated brass valve for unloading
- ✓ Has 3 different manure spreading patterns
- ✓ Tank has a float level indicator and sight glass
- ✓ A 20-inch rear manhole for easy access to tank
- ✓ Tanks are made of 5/16 thick metal
- ✓ Large air-cooled vacuum pump

**Special \$6675**

**THE SLURRY MIXER**

is built to handle your liquid manure agitating problems.



This 3 point hitch Slurry Mixer's large 22" propeller produces a strong undercurrent that moves liquids, floating chunks of crust, weeds, bedding and dried manure into the propeller that chops, mixes and blends your manure into an even liquid slurry.

**Priced at \$2,495**

**SLURRY BUGGY EQUIPMENT**

327 Stackstown Rd.  
Marietta 17547  
717/426-4919



**NEW EQUIPMENT SPECIALS**

- Kubota B2150 HSD
- Kubota M8580 DT, Hyd. Shuttle, 80 HP
- Kubota M7580 DT, Hyd. Shuttle w/Loader
- Kubota B1750 DT, 20 HP

**NEW HESSTON EQUIPMENT**

- 540 Round Baler, 900 Lbs.
- 4750 Mid Size Big Square Baler
- 4570 Baler w/Thrower

**USED EQUIPMENT**

- Dion Forage Wagon, 3 Beater, Roof
- 20' Turner Rear Mount Boom Mower
- Hesston 4600 In-line Baler w/Thrower
- (2) KM 321 Vicon Disc Mower/Conditioners
- JD 260 8' 3 Pt. Disc Mower
- Ford 6610 Tractor
- NI 621 Blower
- Haben 5' Sickle Bar, New Demo
- MMU 1941
- Hesston 4800 Big Square Baler
- 489 NH Haybine, Good Condition
- Donahue Windrower Trailer
- Hesston PT10 Windrower
- 3 Pt. 12' Weeder
- 3 Pt. 214 Plow
- Bush Hog 2615, 15 Ft., 1000 RPM Wing Mower

**LAWN & GARDEN**

- Kubota B6100E, 48" Deck, 15 HP
- Grasshopper 612, 44"
- JD 212 w/Snow Blade
- JD 175 Hydro w/Catcher
- Steiner 220 60" Mower w/Catcher
- Grasshopper 718, 52"
- Grasshopper 721D, Dsl., 61"
- Cub Cadet 1860 Hydro w/Catcher

**STOLTZFUS FARM SERVICE**

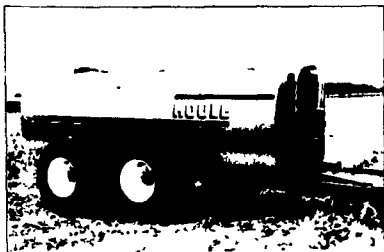
Cochranville, PA 215-593-2407

**CAN'T WAIT? RENTAL PUMPS AND TANKS AVAILABLE**

**HOULE**

**LIQUID MANURE SPREADER**

5 YEAR AXLE, HUB AND UNDER CARRIAGE WARRANTY



WITH FLOTATION TIRES TO MINIMIZE SOIL COMPACTION

MODEL SHOWN: 4800 US GALLONS WITH 28Lx26 FLOTATION TIRES

- Exterior finish: epoxy primer and urethane paint.
- Available with inside epoxy coating including a 10 year warranty against rust out.
- Size of Tank: 2350 - 2700 - 3150 - 3600 - 4250 - 4800 and 5350 US gallons.
- We also manufacture truck mount models

- Unique shape of tank offering greater resistance to stress related tractors.
- Low profile tank for maximum visibility and stability.
- "V" shape bottom for more complete clean out.
- Pump bearing housing assembly built with tapered roller bearings in oil bath protected by 3 greasable seals.

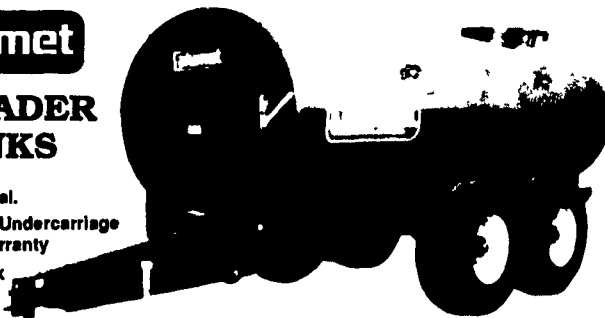
**LIQUID MANURE PUMPS**

- Available in 6 versions for inground or above ground tanks as well as lagoon storage areas.
- Excels as a stationary P.T.O. driven pump to agitate and transfer manure with straw and hay
- Agitation-up to 18,000 G.P.M. with moveable propeller.

**Calumet**

**SPREADER TANKS**

- 1500-5000 Gal.
- Heavy Duty Undercarriage w/5 Year Warranty
- 10 Year Tank Warranty



Available With Rear Slinger Or Front Mount Pump

**Calumet**

**VACUUM TANK**

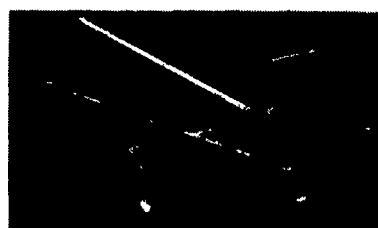


- 1500 to 5000 Gal.
- 10 Year Tank Warranty
- 4 Shank Rear Injector

- Commercial Duty Shut-Off And Vac Pump
- 28 Ply Flotation Tires

**HOULE**

**32' TRAIL PUMP FOR DEEP LAGOON**



Fastest agitation by the nozzle located over the heavily settled manure. Constant homogenization of bottom sediments by the propeller displacing up to 18000 G.P.M.

- Controls hydraulically operated from tractor seat
- Horizontal nozzle operating radius: 330'
- Vertical nozzle use: 60'
- Horizontal pump allowing to pump more slurry

- Hydraulic hinged trailer frame mounted on flotation tires
- Possibility to maintain propeller at crust level
- Filling pipe with standard tripod or with front tractor mounted stand for faster set up.
- Recommended HP: 70 to 120 HP on 540 R.P.M. — 150 H.P. minimum on 1000 R.P.M.

**2 FARM EQUIPMENT WANTED**

John Deere 4400 combine need of repairs, preferable engine repair. (814)674-8119.

Narrow row snapper head for 1890 or 1895 NH, sp. harvester. 814-942-0288.

NH #254 Tedder/Rake. (413)562-1266.

PTO shields for: Farmall 350, Case 800, Oliver 550, Int. 1066 (dual PTO). (412)258-3557.

WANTED: Farmall A to operate Woods belly mower, with or w/o mower; or engine from Farmall A. 717/795-9946 after 6pm.

WANTED: Ford 7600 tractor, must be in good condition. 814/796-4542.

WANTED: IH 1000 loader for Farmall Cub. 516-333-9021 ask for Bob JR.

WANTED: Int. Utility Gas 350 or 450 tractor, fast hitch, power steering, good working condition. 908/782-2429.

WANTED: Porsche one cylinder (Junior) tractor. Restored through Stuck. 304/725-8444.

WANTED TO BUY: Sawmill, Woodmizer or Kasco. 717/362-4119.

WANTED: Tree shear for Case 450 loader and logging forks w/top clamp for Case 450. 215-935-8733 After 6PM.

WANTED: Tractor/loader, w/2/3 yd. bucket, 4WD, 3pt, PTO, 40-50HP. Prefer Kubota, JD. Will consider Gehl skid loader. 908-446-7888 After 9PM.

WANTED: Used set of 24.5-32 Firestone all traction, field and road, 10 ply tires. 717-265-6784.

**WANTED:**

**USED FORD & KUBOTA TRACTORS**

Call 717-949-2000 Daytime

TRADE-IN'S WELCOME  
RD 3, Box 84  
Mifflinburg, PA  
17844

**SNOOK'S EQUIPMENT**

Your Complete Liquid Manure Equipment Dealer For 21 Years!

Daily U.P.S. Parts Service  
717-966-2736  
Ask For Ernest or Dean