

- IH Super C, new rubber.....\$1,900
 - IH 460 Utility w/loader.....\$4,500
 - IH 666.....\$9,500
 - Bush Hog 2400 loader for IH tractors.....\$2,750
 - (2) IH 966.....\$11,000
 - (2) year round cabs.....\$1000 & \$1,500
(trading your fenders)
 - IH 786 w/roll bar, new TA & clutch, excellent condition.....\$11,900
 - IH 1586 cab & air, new rubber, new paint.....\$12,500
 - IH 966 black stripe, new rubber, TA, clutch & paint.....\$11,500
- Financing Available
717-776-5291
JEFF SHOWAKER
- Clean off-the-farm, field test tractors
Most Reconditioned And
Sold With Warranty
Positively no out-of-state
Personal checks

SPRING SPECIALS

Tractors

- White 2-70 w/loader, low hrs.....\$9,950
- Mustang 442 Unloader, Kubota diesel.....\$7,500

Harvesting Equipment

- MF hay head, Fits 200 harvester.....\$450
- Fox SRN head, belted.....\$ 850

Planting & Tillage

- MF 57 3-16" rollover plow.....\$2,450
- Oliver 4-16" reset plow.....\$1,625
- IH 3 btm. semi mount regular trip plow \$850
- Oliver 4 btm. semi mounted plow, regular trip \$975
- Brillion Packers 11' & 12'.....\$975
- IH 12' Vibra Shank w/leveler, 3 pt.....\$1,150

Miscellaneous

- JD 660 rake w/dolly wheel.....\$1,850
- Ford 3 pt. post hole digger.....\$575
- J&L Feeders, Hay Savers.....\$725
- Double 8 Hay Feeders.....FOB-PA \$595
- Bale-Eze Grabbers w/cylinder, for plastic wrap bales.....\$995

D. J. IMPLEMENTS OF PA & VIRGINIA



*Village of Reistville

** VA Sales Lot

Call Dan Rhodes
8 a.m. to 5 p.m.

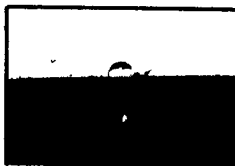
703-879-9926

**SUPER TARP™
SLEEVE STYLE
TIE DOWN METHOD**



A QUALITY PRODUCT AT A REASONABLE PRICE

- * 5 to 7 years of service (when secured properly)
- * Triple sewn seams
- * Silver on outside to reflect sunlight
- * Long life UV fabric
- * One of the heaviest materials on the market



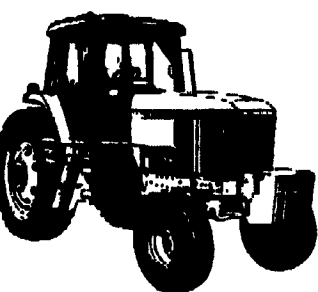
SLEEVE GOES FULL WIDTH OF THE SUPER TARP™ SO PIPE CAN BE USED TO TIE DOWN TARP

ADVANCED SCIENTIFICS, INC.

RD 2, Box 52, Millersburg, PA 17061

1-800-724-4158

Dealers Wanted In Many Areas



New JD 7600 Tractor, 110 HP
List \$62,521.00

Cash \$49,999.00

NEW GEHL EQUIPMENT

- Model FB1540 Blower.....\$3,200
- Model 1267 12 Ton Wagon w/Tires.....\$1,875
- BU970 16' Forage Box w/Roof.....\$5,995
- MS322 Spreader.....\$11,900
- QC2360 MoCo.....\$12,500

NEW BRILLION EQUIPMENT

- BRS 6302 6R Cultivator.....\$2,525
- SSLP Grass Seeder.....\$1,775

USED TRACTORS

- JD 235 loader.....\$18,900
- IH 3088 w/cab.....\$18,900
- JD 2440 w/145 loader.....Coming In
- White 2-85 w/Cab.....\$11,500
- JD 3020 Weights & Roll Guard, Side Console.....\$6,500

USED EQUIPMENT

- NI 214 spreader.....\$895
- NH 55 hay rake.....\$695
- JD 4400 Combine w/13' Head.....\$8,900
- JD 670 Hay Rake.....\$1,850
- Kasten 250 Spreader.....\$895
- JD 8350 Drill.....\$3,995
- JD 244 Cornhead.....\$895
- JD 3R Head.....\$2,975
- Gehl 1200 Harvester, 2 Heads.....\$3,595

GUTSHALLS, INC.

Carlisle Loyesville

(717) 249-2313 (717) 789-4343



Liquid Manure Pumps
Portable & Stationary

CASE IH 485 TRACTOR
4 WD, With Loader
\$15,500

- IH 684 Tractor.....\$9,800
- IH 1486, 4WD, w/Duals, all new rear radial tires, cab & air, 2700 hrs.\$18,900
- Case IH 1494, 4WD, Cab & Air, 900 Hrs.....\$16,500
- IH 1466 Tractor.....\$8,900
- IH 1256 Tractor.....\$7,900
- JD 20 Ft. Transport Rotary Hoe, w/All New Wheels.....\$1,850
- NH 489 Haybine.....\$3,900
- NH 456 Mower.....\$1,650
- NH 402 Crimper.....\$1,050



MILLER'S REPAIR

1 Mile North of Bird In Hand
8 Miles East of Lancaster

Ph. 717-656-8100

ECCO INC.

**SMALL ENGINES
PARTS • ACCESSORIES**

Briggs & Stratton
Honda
Kohler • Tecumseh

**LAWN & GARDEN
EQUIPMENT
Parts & Service**
MTD • Air Cap • Murray

**IRRIGATION PUMPS
SUPPLIES • PIPE • HOSE**

Gorman Rupp, Hale, Hypro, Blue Angel,
Scot, Berkeley, Pierce, Pacer,
Traveler (Hobbs/Amadas)

**FARM • CONSTRUCTION SITE •
NURSERY • QUARRY • GOLF
COURSES • ATHLETIC FIELD**

Preventive flood control, water damage control. *Price to call Call today!*

LARGE INVENTORY



4021 North Sixth Street
Harrisburg, PA 17110-1000
Ph. 717-238-4424 • 800-780-3228
Showroom & Counter Sales Welcome! M-F: Mon.-Fri. 8 to 5

24 HOUR
FAX
SERVICE
717-238-7635

Yanmar Tractor, 4WD,
15hp, diesel, 440hr, gar-
age kept, loader,
48" Woods mower, \$7800.
304/788-5634.

Zook 1500 gallon semi-
solid manure spreader
\$1,200, very good condi-
tion. (717)687-8008.

Wood to build wooden
horse trees, cut 2 sizes.
717-786-7363 leave mes-
sage 7:30AM-8AM

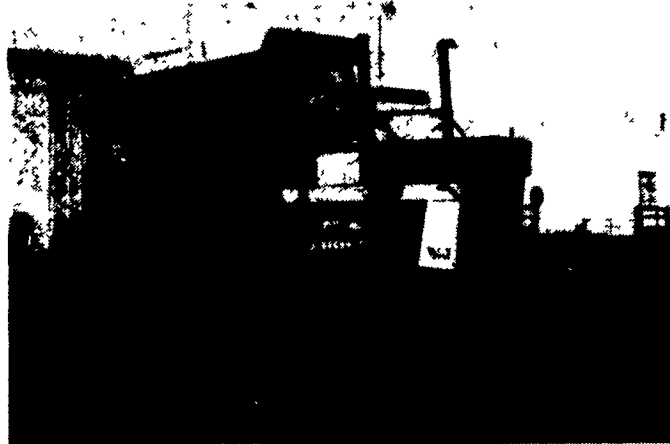
TANKS



- 20,000 Gal. Steel, Excellent w/Saddles.....\$3,000
- 1500 Gal. Steel (Pressure).....\$1,000
- 1000 Gal. Steel & Fiberglass (New) Double Wall.....\$1,200
- 2000 Gal. Steel w/Dyke.....\$1,000
- 300 & 550 Gal. Steel (New).....\$400/ea.
- 500 Gal. Steel (Pressure).....\$500

Call Alan Antyime 410-337-3570

**INVESTMENT TRACTORS
FOR SALE**



IH 1568 - With Duals - As We Received It - Nothing Special -
Runs - Don't Be Afraid To Make An Offer On This One -
It's Red - Not Green - Must Go!
ASKING \$5,900

- 18532 56 Ferg 35 New (0 Hours) Not Redone- Brand New!!!.....\$24,500
- 22045 75 IH 1568 Cab-Air Runner- With Duals.....\$ 5,900
- 54 IH S-H Last Year Super H In Restorable Condition.....\$ 1,700
- 19577 57 JD 320S 3 Pt-Clean Original- Above Average.....\$ 6,900
- 21618 57 JD 320U Clean 1 Owner- Fair Repair- Easy Restore.....\$ 6,500
- 21607 59 JD 330S Runs Good- Nicely Redone- Good Tag.....\$10,500
- JD 420 Crawler Dozer.....Coming In
- 21207 60 JD 530 3 Pt- Power Steering- New Frt Tires- Redone.....\$ 4,900
- 19672 57 JD 620S Standard- Nicely Redone- Well Above Average.....\$ 5,900
- 22520 56 JD 70S Standard- Diesel- Good Tin- Good Rubber.....\$ 3,200
- 21903 58 JD 720 Pony- WF- 3 Pt- Runs OK- Nicely Redone.....\$ 5,100
- 21699 59 JD 730S Pony- Standard- Nicely Redone.....\$ 5,900
- 21339 55 JD 80 Off Farm Condition- Fair Tires- Good Tin.....\$ 4,600
- 21930 57 JD 820 Pony- PTO- Needs Restored- As Is.....\$ 2,500
- 22050 58 JD 820 Runs- No Pony- Poor Tires- Fair To Gd Tin.....\$ 2,900
- 22051 59 JD 830 Pony- Poor Tires- Good Tin- Runs.....\$ 5,300
- 21702 59 JD 830 De-Overhauled- 80% Tires- Good Tin- Redone.....\$ 8,900
- 23043 36 JD A Unstyled- Runs Good- Easy Restore- Good Tin.....\$ 2,700
- 23122 35 JD A Unstyled- Good Tires & Tin- Decent Paint.....\$ 3,100
- 37 JD A Unstyled- Factory Steel- Runs Good.....\$ 3,200
- 21968 36 JD A Unstyled- Factory Round- Runs Good.....\$ 3,500
- 23073 51 JD AR Styled- Nicely Painted- New Rear Tires.....\$ 4,900
- 21542 50 JD AW WF- Fenders- Clean- \$2000 Engine Work Done.....\$ 3,900
- 21722 38 JD B Unstyled- New Paint- Spokes- Runs Good.....\$ 3,200
- 23120 37 JD B Unstyled- New Rear Tires- Decent Paint.....\$ 3,500
- 23044 37 JD B Unstyled- Spokes- Nicely Redone- Gd Tin.....\$ 4,200
- 22146 47 JD D Styled- Loose But Not Running.....\$ 1,750
- 21965 49 JD D Styled- Runs- As Received.....\$ 2,500
- 21228 41 JD D Styled- Hand Start- Good Tin- Decent.....\$ 2,700
- 21966 49 JD D Styled- Runs- Nicely Redone.....\$ 3,950
- 21908 50 JD G Try- Decent Tin- Runs Good- Needs Paint.....\$ 2,700
- 21967 51 JD G Runs- As Received.....\$ 2,900
- 23107 48 JD G Good Tin- Runs Good- New Tires- Nicely Redone...\$ 4,650
- 23108 38 JD G Unstyled- Good Tires- Good Tin- Runs Good.....\$ 5,200
- 23121 41 JD G Unstyled- Last Full Year Of Prod.- Nice Unit.....\$ 5,300
- 22160 51 JD GW WF- As Received.....\$ 4,600
- 22171 45 JD H PTO- Hyd- Starter- Running Condition.....\$ 2,300
- 21787 50 JD M Good Tires- Fair Tin- Runs Good- To Restore.....\$ 1,400
- 23070 49 JD MT Fenders- Weights- Fair Tin- To Restore- Runs.....\$ 1,600
- 22021 50 JD MT Widefront- Runs- To Restore.....\$ 1,800
- 21931 53 JD R Runs- Needs Restored.....\$ 2,800
- 23124 51 JD R Overhauled- Good Tin- Repainted- Good Cond.....\$ 4,900
- 22052 63 MF 97 4x4- Cab- Runs- Good Tires- Good Tin.....\$ 4,900
- 21969 61 MF 98 GM Diesel- Runs Good- Thin Paint.....\$ 4,800
- 23074 60 MF 98 GM Diesel- Runs Good- Nicely Redone.....\$ 5,900
- 21608 53 OL 66 Widefront- Fenders- Nice Tin- 2 Remotes.....\$ 1,800
- 21897 57 OL 880 Diesel- Standard- New Tires- Very Nice.....\$ 4,900
- 22053 60 OL 990 GM Dsl- Poor Tires- Good Tin- Runs Good.....\$ 4,900

I Will Buy Clean Or Odd John Deere's. Buy-Sell-Trade.
Lots Of Older Sales Literature, Toys And Pedal Tractors For Sale.
Lots Of Owners Manuals/Parts Book — Call.

LLOYD WENGER

251 S. Race St., Myerstown, Pa. 17067
717-866-2130 Days 717-866-7147 Evenings