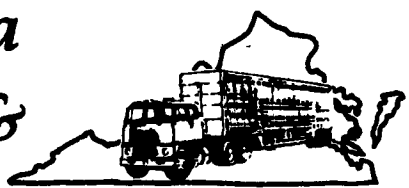


# Virginia Cattle & Hogs



## Virginia Weekly

Richmond, Va.

Wednesday, March 30, 1994

WEEKLY REVIEW IN VIRGINIA REVIEW OF VIRGINIA DIRECT HOGS FOR THE PERIOD MARCH 23-29, 1994. RECEIPTS FOR COUNTRY BUYING STATIONS IN VIRGINIA FOR THE PERIOD TOTALED 1027 HEAD.

RECEIPTS FOR DELIVERY TO THE PLANT (WITHIN A 30 MILE RADIUS) TOTALED 3022 HEAD. THE VIRGINIA DIRECT HOG MARKET FOR TUESDAY, MARCH 29, 1994 CLOSED \$2.00 LOWER COMPARED TO LAST TUESDAY'S TRADING.

BARROWS AND GILTS: VIRGINIA COUNTRY POINTS U.S. 1-3 220-250 LBS 39.00-41.50.

LOCAL PLANT DELIVERED (30 MILE RADIUS).

US 1-2 220-250 LBS. 39.50-40.50 FEW 41.50 US 2-3 220-250 LBS. 38.50-39.50.

SLAUGHTER STEERS AND HEIFERS 0%; SLAUGHTER COWS 10% SLAUGHTER BULLS 1%, SLAUGHTER CALVES AND VEALERS 0%; FEEDER CATTLE UNDER 600 LBS 68%, OVER 600 LBS 21%.

PRICE RANGES FOR VIRGINIA WEEKLY AUCTIONS: SLAUGHTER STEERS & HEIFERS: TOTAL HEAD

COUNT 0 HEAD STEERS: CHOICE 2-3 1150-1300 LBS ---- SELECT 2-3 1200 LBS & OVER ---- HEIFERS: SELECT 2-3 1100-1300 LBS ---- STANDARD 1-2 850-1100 LBS.

SLAUGHTER COWS TOTAL HEAD COUNT 775 HEAD, UTILITY & COMMERCIAL COWS 40.00-51.00.

SLAUGHTER BULLS: HEAD COUNT 105 HEAD BULLS - 1-2 900-1300 LBS 51.50-66.00 1-2 1300-1600 LBS 54.50-69.00 1-2 1600 LBS & OVER 53.50-65.00.

SLAUGHTER CALVES & VEALERS TOTAL HEAD COUNT -- HEAD CALVES - GOOD AND CHOICE 250-500 LBS ---- VEALERS - GOOD AND CHOICE 200-350 LBS.

SLAUGHTER LAMBS TOTAL HEAD COUNT 511 HEAD NEW CROP CHOICE & FEW PRIME 1-2 FEW 3 92-120 LB. 57.00-67.00 GOOD & FEW CHOICE 1-2 85-95 LB. 48.00-55.00 (OLD CROP) WOOLED CHOICE & FEW PRIME 1-2 FEW 3 105-122 LB. 51.00-64.00 GOOD & FEW CHOICE 1-2 77-92 LB. 46.50-52.50.

SLAUGHTER HOGS TOTAL HEAD COUNT 28 US 1-3 200-250 LBS 35.00 US 2-4 250-300 LBS 31.00 SOWS US 1-3 300-500 LBS 28.50-35.00 500 LBS & OVER 32.00-36.50.

FEEDER CATTLE TOTAL HEAD

COUNT FOR ALL WEIGHTS 7001 HEAD.

STEERS: MEDIUM 1 300-400 100.00-115.00 FEW 91.50 400-500 95.00-113.00 FEW 93.00 500-600 85.00-99.00 600-700 76.00-91.50 700-800 72.00-81.00 800-900 67.50-76.00 900-1000 64.25-72.75.

HEIFERS: MEDIUM 1 200-300 84.00-102.00 300-400 80.00-97.00 400-500 78.50-95.00 500-600 72.00-86.00 600-700 70.00-81.00 700-800 64.50-66.00.

## North Virginia

Richmond, Va.

Thursday, March 31, 1994

SLAUGHTER CATTLE 70 HEAD.

SLAUGHTER COWS 57 HEAD COWS BREAKING UTILITY & COMMERCIAL 2-4 50.00 - 53.50 CUTTER & BONING UTILITY 1-3 41.50 - 44.50 HIGH DRESSING 46.00 - 50.00 CANNER AND LOW CUTTER 1-2 33.50 - 40.75.

SLAUGHTER BULLS 13 HEAD BULLS Y.G. 1-2, 1300-1600 LB. 54.75 - 56.00 Y.G. 1-2, 1600 LBS. & OVER 57.50 - 62.00.

GOATS 20 HEAD KIDS - 15.00 - 21.00.

FEEDER CATTLE 154 HEAD.

STEERS 52 HEAD MEDIUM 1 LARGE 1 SMALL 1 300-400 92.50 - 105.00 - 88.00 - 100.00 400-500 94.00 - 95.00 78.00 - 103.00 - 500-600 84.50 - 95.50 - 600-700 76.50 - 88.00.

HEIFERS 55 HEAD MEDIUM 1 LARGE 1 SMALL 1 MED & LARGE 2 300-400 - 85.00 - 88.00 70.00 - 75.00 - 400-500 74.50 - 80.00 83.50 - 87.50 - 74.50 - 82.00 500-600 79.00 - 81.50 - 62.50 - 65.00.

BULLS 42 HEAD MEDIUM 1 LARGE 1 SMALL 1 MED & LARGE 2 200-300 -

- 85.00 - 99.00 300-400 89.00 - 107.00 - 93.00 - 111.00 400-500 83.00 - 94.00 - 65.00 - 83.50 85.50 - 88.00 500-600 79.50 - 87.50 78.50 - 82.50 - COWS RETURNED TO FARMS 3 HEAD - M-1, 9-12 YRS OLD 900-1000 LBS \$500.00-550.00 PER HEAD. COWS WITH CALVES AT SIDE 6 PAIR - M&L-1, 5-8 YRS OLD 1000-1200 LBS WITH CALVES 150 LBS \$600.00-700.00; S-1, 10-20 YRS OLD 750-850 LBS WITH CALVES 75 LBS. \$410.00-500.00 PER PAIR. BABY CALVES RETURNED TO FARMS 10 HEAD NEWBORN TO 4 WEEKS OLD \$77.50-102.50 PER HEAD.

## Mercer

### Livestock Auction

Mercer, Pa.

Tuesday, March 29, 1994

Report Supplied by PDA

CATTLE 200. PDA .sl. steers 1.00 to 2.00 higher, cows stronger to 1.00 higher. STEERS: High Choice and Prime 1050/1400 lbs. 72.00-74.50, Choice 1110/1490 lbs. 71.00-75.10, few 1500/1540 lbs. 67.00-70.00, Select 64.00-68.75, couple to 72.0, Standard 56.00-64.00. HOLSTEINS: few Choice 1295/1360 lbs. 62.00-66.00, couple Select 60.00 & 63.25. HEIFERS: few High Choice and Prime 1130/1465 lbs. 66.60-68.85, few Choice 1060/1190 lbs. 67.75-69.00. COWS: few Breaking Utility and Commercial 45.00-48.00, Cutter and Bon. Utility 43.00-46.75, few 48.75, Canner and Low Cutter 40.00-44.00. Shells down to 32.00. BULLS: few Yield Grade

No. 1 1180/1630 lbs. 58.75-67.00, No. 2 1030/1575 lbs. 49.50-56.35. FEEDER CATTLE: Steers: one Large Frame No. 1 620 lbs. 85.00, few Medium Frame No. 1 300/715 lbs. 66.50-81.00; Heifers: few Large Frame No. 1 430/620 lbs. 75.00-77.00, few Medium Frame No. 1 320/570 lbs. 63.00-70.00; Bulls: few Medium Frame No. 1 435/715 lbs. 63.00-76.50, few Large Frame No. 2 530/855 lbs. 45.00-55.00.

CALVES 130. VEALERS: Standard and Good 65/115 lbs. 40.00-64.00, few Utility 50/80 lbs. 20.00-32.50. RETURNED TO FARM: few No. 1 Holstein bulls 120/130 lbs. 80.00-105.00, 95/115 lbs. 122.50-140.00, 80/90 lbs. 112.50-125.00, No. 2 120/200 lbs. 65.00-82.00, 90/115 lbs. 70.00-112.50; couple No. 1 Holstein heifers 90 & 125 lbs. 225.00 & 235.00, few No. 2 125/200 lbs. 113.00-125.00, 70/100 lbs. 95.00-160.00. Beef cross bulls and heifers 75/110 lbs. 100.00-170.00.

HOGS 215. Barrows and gilts steady 2.00 to 3.00 lower. BARROWS AND GILTS: US 1-2 240/260 lbs. 41.60-42.00, US 1-3 230/270 lbs. 39.00-40.85, US 2-3 220/240 lbs. 37.00-39.10, US 1-3 200/210 lbs. 37.00-38.00, SOWS: US 1-3 250/415 lbs. 33.00-37.00, few Medium 250/385 lbs. 31.00-34.00. BOARS: few 290/575 lbs. 25.00-28.00.

FEEDER PIGS 20... Few US 1-3 30/40 lbs. 22.00-24.00.-- per head. few US 1-3 85/130 lbs. 42.00-45.00. -- per cwt.

SHEEP 46... Choice 50/90 lbs. Spring sl. lambs 50/90 lbs. 84.00-98.00, few Choice 60/70 lbs. Woolled sl. lambs 55.00-70.00. Slaughter sheep: 16.00-25.00.

GOATS 8... Few Large 20.00-60.00, one Small Kids 17.00.-- per head.

## See Your AGCO White-New Idea Dealer Listed Below.

### New Jersey

#### Bridgeton

Leslie G. Fogg

#### Columbus

Reed Brothers Equipment

#### Shiloh

Farm Rite

### Pennsylvania

#### Airville

Farmers Equip & Supply

#### Bechtelsville

Miller Equipment

#### Belleville

Ivan J. Zook & Sons

#### Bethel

Zimmerman Farm Service

#### Bloomsburg

William F. Welliver

#### Chambersburg

Chambersbrg Farm Service

#### Cochranville

Stoltzfus Farm Service

#### Dover

George N. Gross

#### Everett

Sollenbergers Equipment

#### Gettysburg

Yingling's Implement

#### Honesdale

Marshall Machinery

#### Klingerstown

Stanleys Farm Service

#### Lebanon

Umbergers of Fontana

#### Mahaffey

Hutton Farm Equipment

#### Mercer

Ralph W. Kyle

#### Oakland Mills

Peoples Sales & Service

#### Quakertown

C. J. Wonsidler Brothers

#### Quarryville

A L Herr & Brother

#### Somerset

Lincoln Supply & Equipment

#### Tunkhannock

Acc Jurista

## Slices through lush stands while gently crimping stems.

New Idea 5200 Series Disc Mower Conditioners swiftly slice through the toughest conditions while gently crimping stems.

And reducing mowing time while reducing leaf loss is critical in maximizing the relative feed value (RFV) of your crop.

Best of all, the low maintenance, shaft-driven self-contained disc modules get you through spots that stop others in their tracks.

Select the best width for your operation: 9'3" or 11'9". Then see one at your White-New Idea dealer or call 1 800 767-3221.



**NEW IDEA**  
BY AGCO WHITE-NEW IDEA

## FOR SALE - MANURE

20-25 ton trailer loads  
\$6 to \$8/per ton depending  
on distance

### VINTAGE SALES STABLES, INC.

Paradise, PA 17562

215-458-5060 - 717-442-4181

L. Robert Frame, President

## WHAT'S AHEAD FOR CORN & SOYBEAN

- We Deal In Futures And Options
- Our Only Business Is Commodity Futures And Options
- Same Location And Principals For Over 20 Years
- When Buying options, your risk is limited to the loss of the premium paid plus all transaction cost. Buying futures and options have inherent risk and should be done only with risk capital.

FOR INFORMATION...LITERATURE...

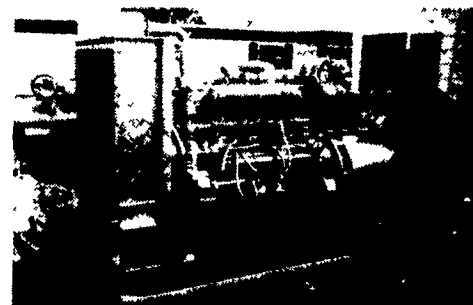
CHARTS... PLEASE CALL

215-821-8111 800-543-8939

### LEHIGH VALLEY FUTURES INC.

Suite LL6, 2200 Hamilton St., Allentown, PA 18104

The risk of loss in trading futures and options on futures can be substantial. Futures and options trading may not be suitable for everyone. You should carefully consider the risks in light of your financial condition in deciding whether to trade.



## GENERATORS

Sales ★ Service ★ Rentals  
★ Complete Generator Systems  
★ PTO ★ Portables ★ 2-1600 KW  
"We Service It If You Have It  
And Sell It If You Need It"

34 W. Mohler Church Rd.  
Ephrata, PA 17522

Tel: 717-738-0300

Fax: 717-738-4329