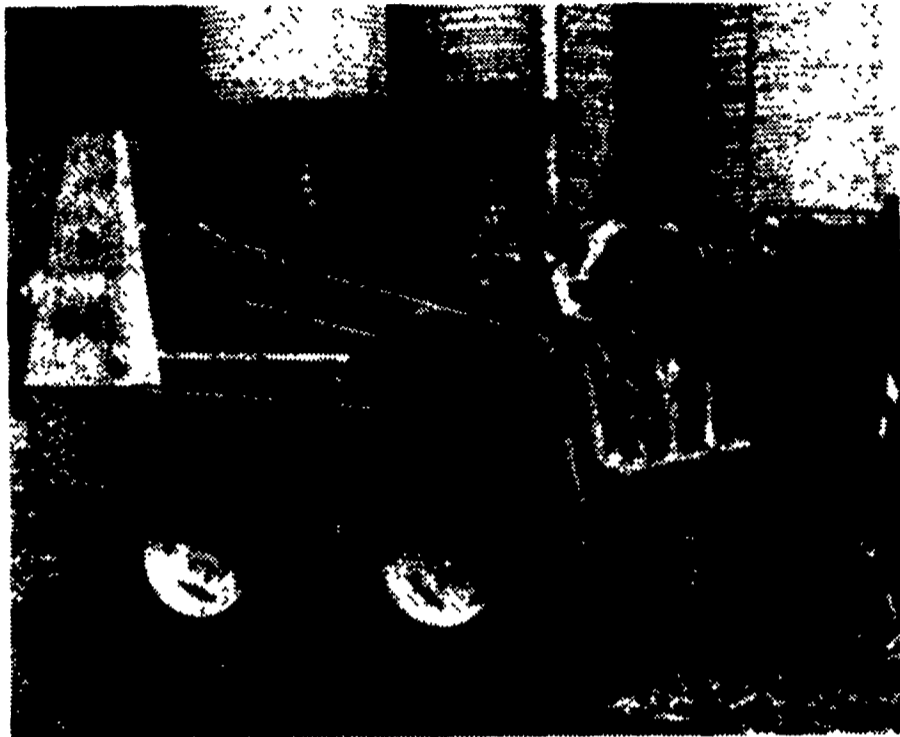


# Best Values in New Equipment

# 1840

The Case 1840 skid steer delivers a rated operating load of 1350 pounds.



- Heavy-duty**
- Compact**
- Reliable**
- Built to last**
- Well balanced**
- Versatile**
- Easy to operate**
- Easy to service**

## BIG productivity, small package

### Compact but powerful

54" wide • reliable 50 net hp Case diesel engine • 3066 lbf breakout force

### Easy to use

Hand or foot controls • low-maintenance hydrostatic drive • easy access to service points

### Productive

Dual bucket cylinders for maximum breakout force • excellent balance for bucket penetration

### Versatile

Quick-change coupler system for fast attachment of buckets, forks, augers and blades

## SEE THESE CASE IH DEALERS

### PA DEALERS

**ERB & HENRY EQUIP., INC.**  
New Berlinville, PA

**HETRICKS FARM SUPPLY**  
New Bethlehem, PA

**ROUTE 45 SALES & SVC**  
Spring Mills, PA

**MIFFLINBURG FARM SUPPLY**  
Mifflinburg, PA

**ECKROTH BROS. FARM EQUIP.**  
New Ringgold, PA

**A.L. HERR & BRO.**  
Quarryville, PA

**CHAMBERSBURG FARM SERVICE, INC.**  
Chambersburg, PA

**BINKLEY & HURST BROS.**  
Lititz, PA

**BANGOR IMPLEMENT**  
Bangor, PA

**INCH EQUIPMENT CO.**  
McAllisterville, PA

**HINES EQUIPMENT**  
Cresson, Pa. & Beltwood, Pa.

**MESSICK FARM EQUIP.**  
Elizabethtown, PA

**C.H. WALTZ SONS INC.**  
Cogan Station, PA

**M. J. SHEFFER, INC.**  
Hanover, PA

**MORRIS INTL. INC.**  
Everett, PA

**ZIMMERMAN FARM SERVICE**  
Bethel, PA

**CARLISLE FARM SERVICE**  
Carlisle, PA

**W.C. CRYTZER EQUIP., INC.**  
Kittanning, PA

### NJ DEALERS

**FARM-RITE INC.**  
Shiloh, NJ

### MD DEALERS

**BIGGS INCORPORATED**  
Rising Sun, MD

