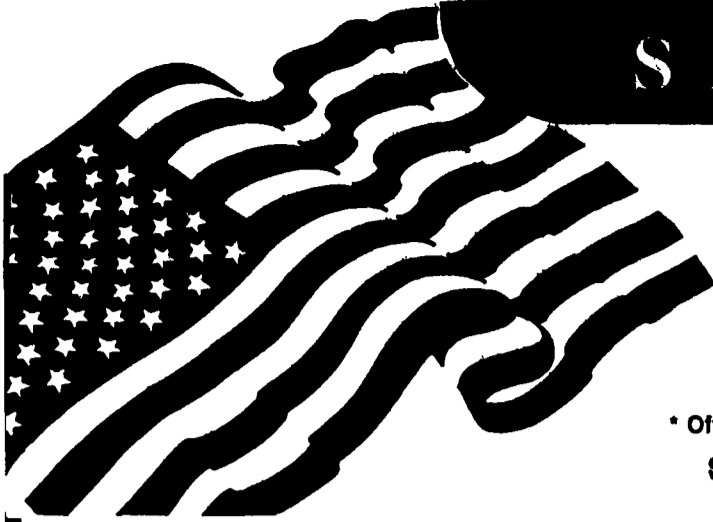


# SAFEMARK



**\$50 U.S. SAVING BOND\***

**When You Purchase Two Rear Farm Tires Listed In This Ad!**

\* Offer Limited To Four Savings Bonds Per Customer

**See Your Safemark Dealer For Details Offer Expires 4-15-94**

## MULTI-ANGLE MB

- \* Excellent drawbar pull with long-bar, short-bar lugs for improved traction.
- \* Designed for improved stability and roadability, plus reduced vibration.
- \* Strong angle-braced lugs have self-cleaning design.
- \* High-strength polyester cord body and heavy duty rim shield help protect tire from damage.



**Example Savings: 15.5x38 6 Ply**  
 Price \$299.00  
 U.S. Savings Bond -25.00  
**Final Price: \$274.00**

Size	Ply	Price
18.4x34	6	\$379
18.4x38	6	\$419

Size	Ply	Price
18.4x38	8	\$449
20.8x38	8	\$599

## POWER MARK L/S RADIAL II

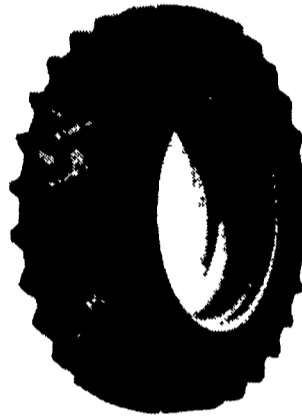
- Radial performance at a significantly lower price
- New cavity shape for low carcass stress and long, narrow footprint, improved durability
- Unique longbar/shortbar tread design with increased lug count for excellent roadability
- Continuous no-splice tread improves tire uniformity and eliminates open tread splices
- Belt package gives excellent bruise and puncture resistance
- Engineered to full Tire and Rim dimensions
- Heavy duty trash shield for extra bead area protection with pry notch
- Size markings on lug face for easy identification in storage



Size	PRICE
15.5R38 ★	\$359.00
18.4R34 ★	\$449.00
18.4R38 ★	\$519.00
20.8R38 ★	\$669.00
18.4R42 ★ ★	\$669.00

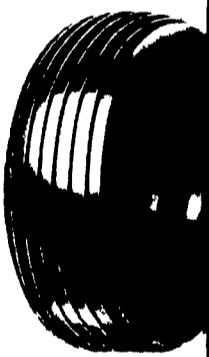
## POWER MARK L/L RADIAL

- Radial performance at a significantly lower price
- New cavity shape for low carcass stress and long, narrow footprint, improved durability
- Unique longbar/longbar tread design with increased lug count for excellent roadability
- Continuous no-splice tread improves tire uniformity and eliminates open tread splices
- Belt package gives excellent bruise and puncture resistance
- Engineered to full Tire and rim dimensions
- Heavy-duty trash shield for extra bead area protection with pry notch
- Size markings on lug face for easy identification in storage



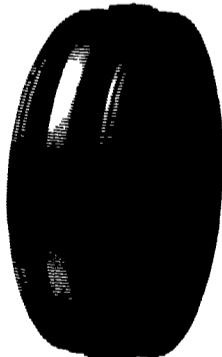
Size	PRICE
15.5R38 ★	\$359.00
18.4R34 ★	\$449.00
18.4R38 ★	\$519.00
20.8R38 ★	\$669.00
18.4R42 ★ ★	\$669.00

## FARM UTILITY WAGON TIRES



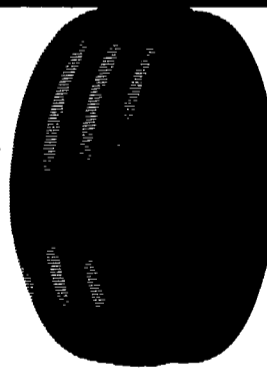
Size	Ply	Price
9.5L-14	8 Ply	\$44.00
9.5L-15	8 Ply	\$44.00
11L-15	8 Ply	\$46.00
12L-15	8 Ply	\$62.00
12L-15	14 Ply	\$89.00

## FRONT TRACTOR 3-RIB



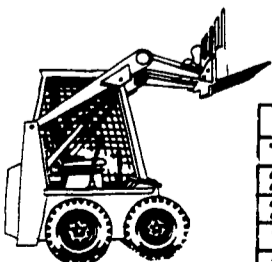
Size	Ply	Price
5.00-15	4 Ply	\$31.00
6.00-16	4 Ply	\$35.00
6.00-16	6 Ply	\$39.00
6.50-16	6 Ply	\$46.00
7.50-16	6 Ply	\$59.00
10.00-16	8 Ply	\$85.00

## POWER GLIDE 4 Rib



Size	Ply	Price
9.5L-15	6 Ply	\$75.00
11L-15	8 Ply	\$98.00
7.50-16	6 Ply	\$69.00
10.00-16	8 Ply	\$89.00
11.00-16	8 Ply	\$109.00

## SKID LOADER TIRES



Size	Ply	Price
7.00x15	6 Ply	\$ 63.00
27x8.50-15	4 Ply	\$ 63.00
27x10.50-15	6 Ply	\$ 79.00
10x16.5	6 Ply	\$ 69.00
12x16.5	8 Ply	\$102.00

## INDUSTRIAL R4



Size	Ply	Price
14.9-24	8 Ply TT	\$259.00
17.5L-24	8 Ply TT	\$259.00
16.9-24	8 Ply TL	\$279.00
16.9-28	8 Ply TT	\$320.00

## Participating SAFEMARK Dealers

- Adams**  
 Mar-Bar Tire Service  
 Hanover, PA 17331  
 (717) 633-6412
- Biglerville Tire & Auto**  
 Biglerville, PA 17307  
 (717) 677-8338
- Bedford**  
 Randy's Tire Service  
 New Enterprise, PA 16664  
 (814) 766-3889
- Blair**  
 Ake's Mobile Service  
 Williamsburg, PA 16693  
 (814) 832-3251
- Rhode's Farm Supply**  
 Williamsburg, PA 16693  
 (814) 832-2491
- Bradford/Sullivan**  
 Histand Farm & Home Service  
 Rome, PA 18837  
 (717) 744-2371
- Bradford**  
 Isaac's Tire Sales  
 Canton, PA 17724  
 (717) 673-8121
- Centre**  
 Dunkle & Grieb  
 Centre Hall, PA 16828  
 (814) 364-1421
- Chester/Delaware**  
 J&L Tire Service  
 Chatham, PA 19318  
 (215) 869-0450
- S.G. Lewis & Sons**  
 West Grove, PA 19390  
 (215) 869-2214
- Stoltzfus Farm Service**  
 Cochranville, PA 19330  
 (215) 593-2407/2408
- Chester**  
 Enfield Equip., Inc.  
 Oxford, PA 19350  
 (610) 932-8858
- Clinton**  
 Dotterer Equipment, Inc.  
 Mill Hill, PA 17751  
 (717) 726-3471
- Columbia**  
 Steve Shannon Tire Co., Inc.  
 Bloomsburg, PA 17815  
 (800) 343-TIRE
- Rte. 487, Benton, PA**  
 (717) 925-2821
- Cumberland**  
 Barrick Tire Sales  
 Newville, PA 17241  
 (717) 776-5782
- Erie**  
 Mike's Auto Repair  
 North East, PA 16428  
 (814) 725-9091
- Franklin**  
 Forrester Farm Equip., LTD  
 Chambersburg, PA 17201  
 717-263-0705
- Stoneham's**  
 Waynesboro, PA 17268  
 (717) 782-3814
- Bruce B. Gamble & Sons**  
 Concord, PA 17217  
 (717) 348-2670
- Fulton**  
 Clugston Farm Equipment  
 Needmore, PA 17238  
 (717) 573-2215
- Greene**  
 Burns Tire Service  
 Waynesburg, PA 15370  
 412-827-8263
- Lancaster**  
 Leola Tire Service  
 Leola, PA 17540  
 (717) 656-2574
- Messick**  
 Farm Equipment  
 Elizabethtown, PA  
 (717) 367-1319
- Lebanon**  
 Amtire Corp.  
 Palmyra, PA 17078  
 (717) 838-5491
- Jonestown Auto & Farm Service**  
 Jonestown, PA 17038  
 (717) 865-4939
- Lebanon Valley Implement Co., Inc.**  
 Richland, PA 17087  
 (717) 866-7518
- Lehigh Co.**  
 Kermit K. Kietler  
 Lynnport, PA 18066  
 (215) 298-2011
- Joe's Battery & Tire**  
 Allentown, PA 18103  
 (215) 437-4961
- Luzerne**  
 Pittson Tire Co.  
 Pittson, PA 18640  
 (717) 665-8181
- Mifflin**  
 Miller-Lake, Inc.  
 Belleville, PA 17004  
 (717) 935-2335
- Northampton/Monroe**  
 Northampton Farm Bureau  
 Tatamy, PA 18085  
 (215) 759-3254
- Northumberland**  
 Rovendale Supply  
 Watsonstown, PA 17777  
 717-538-5521  
 717-742-7521
- Schuylkill**  
 Charles Snyder, Inc.  
 Tamaqua, PA 18252  
 (717) 386-5945
- Somerset**  
 Maple City Tire  
 Maysdale, PA 15552  
 (814) 634-0545
- Union**  
 Mifflinburg Farm Supply, Inc.  
 Mifflinburg, PA 17844  
 (717) 966-3114/3115
- Washington**  
 Canonsburg Supply & Equipment Co., Inc.  
 Canonsburg, PA 15317  
 (412) 746-2500
- Wyoming Co.**  
 J. Roberts & Son Tire Co.  
 Meshoppen, PA 18630  
 (717) 833-5582
- York Co.**  
 Al Tire Co., Inc.  
 York, PA 17454  
 (717) 792-0332
- Corn Hill Farm, Inc.**  
 Ebers, PA 17319  
 (717) 938-2012
- NEW JERSEY**  
 Farmers' Brokerage & Supply, Inc.  
 Allentown, NJ 08501  
 (609) 259-7324



# SAFEMARK

Division of Pennsylvania Farm Bureau  
 Camp Hill, PA 17011  
 CALL TOLL FREE  
 1-800-PFA-TIRE  
 For Dealer Nearest You

A Proud Tradition of Quality, Value and Service.

- QUALITY
- SERVICE

- DEPENDABILITY
- ECONOMY

**NOW SERVING NEW YORK, NEW JERSEY & CONNECTICUT**