



# HAPPENINGS

## Dairy Youth Weekend

The first-ever dairy youth weekend is being organized to expand the knowledge, experiences, and opportunities for Maryland's future dairy leaders. The event is set for Saturday and Sunday, June 4 and 5, at the Frederick County 4-H Camp and Activities Center near Jefferson.

Registration for the "Udderly Awesome Adventure" is set for 9 a.m. Saturday and the seminar will wrap up at noon Sunday. All youth, ages 8 to 18, that have an interest in the dairy industry are invited to attend.

Dairy leaders will speak on show preparation, show ethics and sportsmanship, reading pedigrees and DHIA papers, careers in agriculture, dairy judging, dairy breed and product promotion, milk and fitness, animal activists, agriculture in the classroom, international opportunities, time manage-

ment, artificial insemination industry, and embryo transfer.

The program will also include motivational speakers, a barbecue lunch, snack and swimming break, your own videotaped commercial, pizza party, dance, movie and Sunday breakfast.

Cost for the all-inclusive dairy adventure is only \$15 per person for registration received by May 21. Late registration cost is \$20 per person by June 1.

The program is a project of past 4-H members and current volunteers, Susan G. Summers and Rebecca Long, along with county and state extension personnel.

"We are thankful for the opportunities that we received in the 4-H dairy program and we are eager for the present members to have some of those great experiences," said Long.

"This is a time where we can give back to a program that gave

so much to us," said Summers. "We are hopeful that this weekend seminar will open new doors for 4-H'ers."

For more information, contact Summers or Long at (301) 662-1177. Checks should be made payable to the Maryland Brown Swiss Juniors and sent, along with name, address, phone-number and age to Rebecca Long, 103A East 8th Street, Frederick, Md. 21701.

## Crawford County 4-H Dairy Scholarship

Crawford County 4-H dairy leaders announce that applications for the 4-H Dairy Scholarship Award are available. The dairy leaders have established a scholarship fund from which scholarship awards are made. This scholarship was established to recognize the achievements of the Crawford County dairy youth and to encourage their attending college.

### Requirements:

• Applicant must be a member or past member of Crawford County 4-H Dairy and must have been in the program for a minimum of five years. (All five years need not be in Crawford County.)

• Applicant may be currently enrolled or planning to attend a four year school, two year school, technical school, short course, breeding school, computer school, etc.

• Applicant must have completed a 4-H Dairy Scholarship Application and be available for a personal interview, which may be conducted at the Scholarship Review Committee's discretion.

• Applicant must be at least a senior in high school.

• Applicant must submit either a high school transcript or college transcript with current grade point average to date.

Last year's winners included Michelle Lyons of Cochranon, John Mark Evans of Conneautville, and Jason Hayes of Edinboro.

To apply, call the Crawford County Cooperative Extension Office, at (814) 333-7460 or (800) 982-9019, ext 460. Applications must be received in the office by May 1.

# Bloomin' Garden

(Continued from Page B18)

vital to create a healthy, low-maintenance water garden. The following is a formula for success with a typical water garden.

• Cover 50-75 percent of the surface with water lilies.

• Stock 1 submerged plant per 1 or 2 square feet of surface area.

• Stock 1 scavenger per 1 or 2 square feet.

• Stock no more than 1 inch of fish per 5-8 gallons of water.

• Recirculate and filter the total volume of water once every 2 to 6 hours.

Although a pump is not essential, it is beneficial for clearer water, water falls, conditioning for fish, and proper balance.

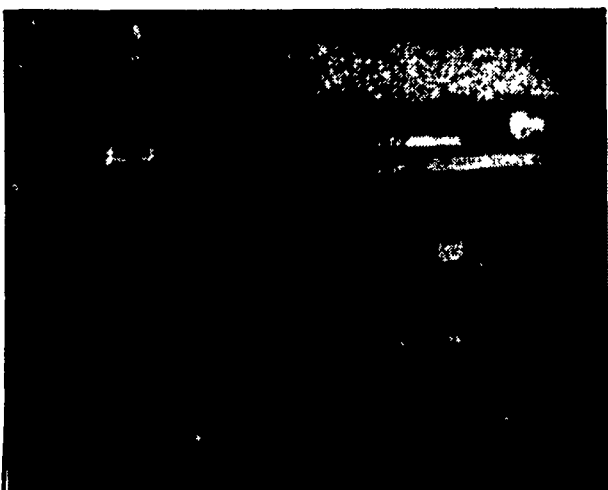
Before digging to install a lily pond, take a hose or rope and lay in the shape and spot desired. Step back and think about the impact of the pond in that position. If you don't like it, switch it around before digging.

Dig out. Level it. Insulate with sand. Line, and fill.

Maintenance is minimal. There is no weeding and no daily watering. Fertilize water lilies and lotus once or twice a month during the growing season. Feed the fish once or twice daily what they will consume within 5-10 minutes, if you want to tame them. Rinse the filter and pump regularly.

# I.H. RISSLER -TMR MIXERS-

## Stationary Mixer



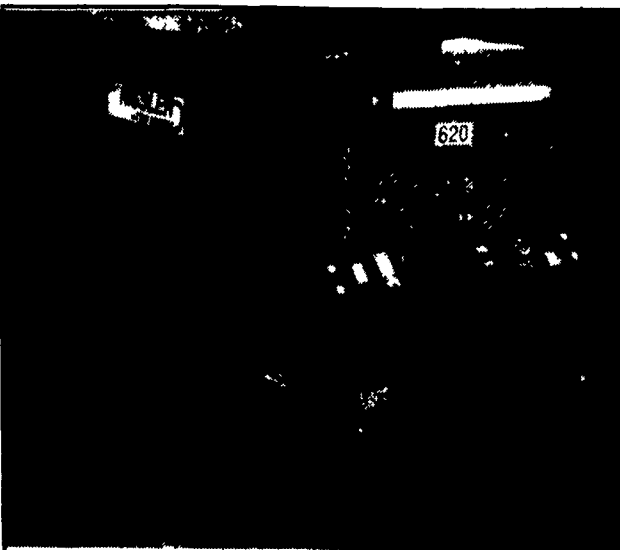
- 11 Sizes To Choose From And 7 Sizes Hay Processing

### STANDARD FEATURES

- 10 Year Warranty On Mixing Box
- Open Top-Easy Filling
- Magnets On Discharge Chute
- Stainless Steel Floor And Auger Trough

**WE CAN CUSTOM BUILD TO FIT YOUR NEEDS**

## TMR HYDROSTATIC FEED CART



- Power Steering With Joystick
- 7.9 Kawasaki With 2 Year Warranty
- Electric Start
- No Moving Parts In Drive Train
- Beam Scale With Beeper
- 5 Year Warranty On Box
- Dual Wheel Swivel
- Magnets On Discharge Chute
- Hour Meter
- 8 Models For Your Convenience

**NEW OPTIONS!** OPTIONS: Hay Knives For Alfalfa Mixing Front Discharge For Feed Bunks, 8 Other Options To Choose From

**Call Your Local Dealer For A FREE Color Brochure!**

**CALL OR VISIT ONE OF OUR AUTHORIZED DEALERS**

**BADGERS AGR. SERVICE**  
Dillsburg, PA 17019  
717-432-8377

**218 DAIRY SUPPLY**  
Berlin, PA 15530  
814-445-8842

**HOUGHTALINGS GARAGE**  
Middlebury Center, PA  
16935  
717-376-2825

**McDOWELL FARM EQ.**  
Grove City, PA 16127  
814-786-7855

**ED RISSLER MFG.**  
New Enterprise, PA  
16664  
814-786-2246

**R.L. BAUGHMAN & SONS BARN EQ.**  
Townville, PA 16360  
814-967-4115

**ART DETWEILER**  
Danboro, PA 19916  
215-348-3117

**JOHN JONES**  
Mechanicsburg, PA 17055  
717-766-8582

**MENDENHALL DAIRY SUPPLY**  
Brookville, PA 15825  
807-735-9858

**WILLIAM ROMBERGER**  
Pitman, PA 17964  
717-648-2081

**C & C EQUIPMENT CO.**  
Elwood City, PA 16117  
412-752-8871

**FRANKLIN FARM SERVICE**  
Laceyville, PA 18623  
717-869-2407

**M & M BARN SALES**  
Westfield, PA 16905  
814-334-5452

**DONALD HESSLEY**  
Willow Street, PA 17584  
717-786-7854

**SHERMAN FARM SERVICE**  
Ablon, PA 16401  
814-756-4143

**CEDAR CREST EQ.**  
Lebanon, PA 17402  
717-297-8600

**GRAHAM DAIRY SUPPLY**  
Greensburg, PA 15601  
412-834-3162

**MARTIN EQ.**  
Chambersburg, PA 17201  
717-263-3505

**ORNDORF FARM SERVICE**  
Howard, PA 16841  
814-625-2808

**R.E. SMELTZER**  
State College, PA 16801  
814-238-8275

**COLUMBIA CROSSROADS EQ.**  
Columbia Crossroads, PA 16914  
717-297-2991

**HESS EQ. SALES & SERVICE**  
Millinburg, PA 17844  
717-868-2720

**JOE MARKOVITCH**  
Montrose, PA 16801  
717-278-3637

**PRINGLE FEED STORE, INC.**  
Greenville, PA 16125  
412-588-7950

**TOM ZARTMAN**  
Ephrata, PA 17522  
717-733-1050

**McMILLEN BROS.**  
Loyalsville, PA 17047  
717-789-3981

**IVAN ZOOK & SONS**  
Belleville, PA 17004  
717-935-2158

**KEN CLUGSTON**  
(717) 665-6775

## CRAFT-BILT CONSTRUCTION INC.

**FARM-HOME BUILDING**  
1242 Breneman Road  
MANHEIM, PA 17545  
PH: (717) 665-4372

**BUILDING & REMODELING FOR—**  
DAIRY RESIDENTIAL  
SWINE POLE BUILDINGS  
BEEF STORAGE

## Poly Square Means Healthier Calves



The Poly Square Big Foot is constructed of Opaque material to eliminate the solar effect. It blocks out sunheat-not sunlight. Poly Square's inverted ribs and 5" (W)x7'6"(L) make it the biggest unit on the market today and extremely wind resistant. It has no pop rivets which means no breaks or cracks for snow and rain to sift in. The unit weighs 100 pounds plus manger & buckets. And Poly Square Big Foot is large enough so your calf can lay in the center, away from cold walls in the winter.

**New Side Hay Feeder - Made especially for Poly Square Big Foot, no other unit has this feature. Also has a center roof vent for better air movement.**



**For Healthier Calves Call: TOM ZARTMAN**  
Ephrata, Pa.  
717-733-1050

**Also Ask About Poly Domes, Silo Chute Hoppers, Silo Chute Liner And Foot Bath**

**Call Now For Great Prices On I.H. Rissler TMR Mixers**

**I.H. RISSLER MFG.**

448 Orchard Rd  
Mohnton, PA 19540-9422

**717-484-0551**