

Public Auction Register

Closing Date Monday 5:00 P.M.
of each week's publication

PUBLIC AUCTION

**MARTIN BROS.
8th ANNUAL
HEIFER DISPERSAL
200 ~ HOLSTEIN DAIRY
CATTLE ~ 200**

Located on the Carson Martin Farm, 4 miles SW of Kantz, PA, 4 miles S. of Selinsgrove. Watch for auction arrows off RT 35 (first road W of Kantz) a Martin's Farm Market or off RTS. 11 & 15 bypass.

Friday, April 8, 1994
Sale Starts At 11:00 A.M.



200 ★ HOLSTEIN DAIRY HEIFERS ★ 200

Consists of 50 from Shortbreds to Springers. 100 from 500-800 lbs. and 50 from 300-500 lbs.

30 Day Health Charts • Interstate Shipment 95% Calfhood Vacc. Preg. Checked • Shipping Fever Shots

Dairy Sale Under Cover

Three month old bull calf by Choice from a Bel with over 30,000.

The Martin Boys have put together an exceptional group of cattle for this year's sale. If you need replacements, don't miss this sale. Also big strong heifers, just ready for pasture. Still accepting a few choice acclimated consignments.

TERMS: Cash or good check day of sale. Out of state buyers must have current bank letter of credit guaranteeing funds.

TERMS BY:

Ethan & Carson Martin
RR 3, Selinsgrove, PA



(717) 546-6907

Licensed & Bonded - Lic. #RY-71L
RR 4, Box 328, Muncy, PA 17756

AUCTION

MEAT PROCESSING PLANT,
Rising Sun, Maryland

After 75 years the Shallcross & Son Meat Processing Plant has closed their doors and will sell the entire contents of the plant on:

FRIDAY, APRIL 15th
At 10 A.M.

Inspection: April 10th 1 to 3 P.M.
ON THE PREMISES: 305 WEST MAIN STREET, RISING SUN, MD.

All Equipment Including: Black Cast Iron Kettles w/mixers; S/S Cookers w/baskets, Meat/Product Chipper, Pump with S/S pipes-3 hp. motor, Elgin Filler, 1/2 ton electric hoist, scrapple racks, Buffalo Grinder-Model 63B-20 hp motor, frozen meat slicer, S/S buckets with 500 lb. dump, dip bucket, floor fan, Multi Vac 70, molds, cutters, stainless steel cutting table, stainless steel tables, #500 S/S Stuffer w/Rockford fillers (small & large, foot operated), #200 Stuffers (valves & horns), Butcher Boy Grinders, Butcher Boy Mixer (lift type), Holleymate 500 with 6 plate, conveyor, Farmco Linker, S/S Stuffing Table, Scales, Sterilizer racks, hand carts, rolling skids, large carts w/tongues, platform scale (200 lb. capacity, Bird Model 33 Saw, Bird Model 34 Saw, cutting table, Bird Grinder Model 34750, Beriez Digital Scales, tables, cooler, large scale, storage racks, sterilizer, paper holders (freezer paper), galvanized rack, label racks, pallets, large rack & legs, S/S tubs (with wheels), 2 industrial tub boilers, 3 hp., 5 hp., and 25 hp. air compressors, personal lockers, table & brushes, portable refrigerated display case, security camera & recorder, desks & chairs, desk cabinet, calculators, filing cabinets, printer, cash register, time clock, large chair, coffee table, chairs, book shelf, refrigerator, typing table, floor lamp, desk lamps, hose reel, lamps.

Real Property: Prime high traffic, Main Street location with frontage, town water and sewer. Masonry building consisting of 10,000 square feet more or less, refrigerator/freezer rooms, loading docks, office space.

TERMS: Cash, certified funds on equipment & furniture, immediate removal requested. Real Estate \$20,000.00 at time of Sale, settlement within 60 days. Immediate possession available to qualified purchaser. Real Estate subject to prior sale.

The information contained herein was obtained from reliable sources and are for advertising purposes only. Accuracy cannot be guaranteed.

R.C. BURKHEIMER & ASSOC.
AUCTIONEERS-APPRAISERS
"TRI-STATE'S FOREMOST AUCTION FIRM"
(410) 287-5588 * FAX (410) 287-2029
1-800-233-4169

Dairy and Livestock Sales

SAT., JUNE 4 - 10AM, Mel's Stable Selected Consignment Horse Sale. Located At 834 Wallace Rd., New Holland, Pa. From Rt. 23 in New Holland, Go South On Brimmer Ave. Go 2 Miles South On New Holland Road To Hill Rd., Turn Left On Hill Rd. Proceed 1.2 Miles To Sale On The Left. From Rt. 340 East Of Intercourse Take New Holland Rt. 2.5 Miles to Hill Rd., Right On Hill Rd. to Sale On Left. Mel Hoover, Auctioneer.

SAT. JUNE 4 - 10AM, Reg. Heifer Sale. Located New Holland Sales Stables Inc., 101 W. Fulton St., New Holland, Pa. Norman Or David Kolb, Auctions.

TUES. JUNE 7 - 7PM Har-

old Write Auction Of Dairy Herd, Silos, Bulk Tank, Pipeline, Barn And General Equipment. Located Tyrone, N.Y. Pirrung Auctions, Inc.

FRI. JUNE 10 - 1:30PM, State Graded Feeder Pig Sale. Located At Carlisle Livestock Market, Inc. Exit 12 South Off I-81. Left Onto Alexander Spring Road. (717) 249-4511.

FRI. JUNE 10 - 7PM, Horse Sale. Located New Holland Sales Stables Inc., 101 W. Fulton St., New Holland, Pa. Norman Or David Kolb, Auctions.

SAT. JUNE 11 - 9AM, 4th Annual Central Berks Co. Spring Farm Toy & Toy Truck Show. Located Lees-

port Market & Auction, Leesport, Pa. (Rt. 61, Approx. 10 Mi. N. Of Reading). Contact Glenn D. Jacoby, 610-488-6162 Eve., 610-562-3747 Days.

SAT. JUNE 11 - 9AM Farmette, Farm Eqpt., Antiques and Furnishings, 114 Race St., Lititz (Lexington) Pa. Ike Blender owner. E.M. Murry Assoc., Auctions.

SAT. JUNE 11 - 2PM, Real Estate, 13 Acre Farmette With 2 Bay Truck Garage. Parcel #1 Buildings With 2 Acres. Parcel #2 11 Acre Lot. Located 2 Miles From Ephrata At 660 Schoenck Rd., W. Cocalico Twp. Auction By Melvin & Laura Weaver. Aaron E. Martin Auction Service.

SAT. JUNE 11 - 6PM Arnold Hog Production Sale, Lebanon Area Fairgrounds, Leb., Pa. Harry H. Bachman, auct.

MON. JUNE 13 - 10AM Clarks Summit, Penna. Vegetable Farming Equip. Auction, Pirrung Auctions, Inc.

WED. JUNE 15 & THURS. JUNE 16 - Large Two Day Sale Of Farm Equipment, Etc., At Our Place Of Business Six Miles South Of Chambersburg, Pa. And One Mile East Of Marion, Pa. Owners And Managers, Marion Auction Service, 5174 Horst Rd., Chambersburg, Pa. 17201.

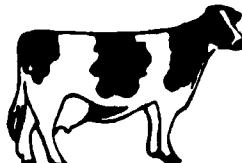
FRI. & SAT. JUNE 17 & 18 - 3-D Picture, Quilts, Crafts, Furniture, Tools. Located At Ephrata Mennonite School, 598 Stevens Rd., Ephrata. Proceeds To Benefit The School. Local Auctions.

FRI. JUNE 17 - 1:30PM, State Graded Pig Sale. Located Westminster Livestock Auction, Westminster, Md.

SAT., JUNE 18 - 10AM, Mel's Stable Selected Consignment Horse Sale. Located At 834 Wallace Rd., New Holland, Pa. From Rt. 23 in New Holland, Go South On Brimmer Ave. Go 2 Miles South On New Holland Road To Hill Rd., Turn Left On Hill Rd. Proceed 1.2 Miles To Sale On The Left. From Rt. 340 East Of Intercourse Take New Holland Rt. 2.5 Miles to Hill Rd., Right On Hill Rd. to Sale On Left. Mel Hoover, Auctioneer.

SAT. JUNE 18 - 10AM, Public Auction Of Driving Horses, Antiques, HH Goods, Blacksmith Tools, Carriage. Located Along Rt. 897 In The Village Of Springville, Lanc. Co. Pa. For Jonas & Elizabeth Beiler. Snyder's Auction Service.

SAT. JUNE 18 - 11AM Tim Cantwell's Complete Line Of Like New Potato Farm Equipment. Located Richfield Springs, N.Y. Pirrung Auctioneers, Inc.



ABSOLUTE AUCTION

**"WAGNER FARM"
DAIRY DISPERSAL
ASHTABULA COUNTY, OHIO
110 HEAD QUALITY HOLSTEINS**

Successful operation. Home raised and bred for 40 years. Owners changing operations, all sells at the farm: 6672 - ST. RT. 322, WILLIAMSFIELD, OH. Directions: Take St. Rt. 7 north of Kinsman or south of Andover to Williamsfield and Rt. 322 then east 1 mile to farm. Watch for KIKO signs....

TUESDAY - APRIL 5, 1994
- 11:30 A.M.

Good young herd consisting of 75 adult cows of which 25 were recently fresh the past 60 days, 26 are dry and springing. Mostly 1st., 2nd. and 3rd lactation. 32 head pasture bred heifers. Very close up with several fresh by sale day. Currently averaging over 50 lbs. in the tank. 3.64 fat, 3.28 P. All home raised, real good feet, legs and udders. Cows milked in stanchions but turned out daily to loafing shed and feed lot. They will adapt to any type setup. They're in good flesh and look real milky. Owner sampler records. Monthly herd check. Health papers furnished. They all had Horizon 9 way shots. Real good commercial herd that paid the bills! Also selling (2) 2 1/2 year old herd bulls. If your looking for spring milk, better plan to attend. Lunch by the Wagon Wheel. **TERMS ON CHATTELS:** Cash or check w/proper I.D. auction day.

AUCTIONEER/REALTOR: Rusty Kiko, C.A.I. (216) 525-7420 - Merle Coy, Pedigrees (216) 863-0086.

**AUCTION BY ORDER OF:
WAGNER FARMS -**
Butch, Sharon & Bob Young, Owners

RUSSELL KIKO ASSOC. INC. AUCTIONEERS
(216) 455-9357



RICHARD T. KIKO AGENCY REALTORS
(216) 453-9187

2805 FULTON DR. N.W. CANTON, OHIO 44718

COMPLETE HERDS FOR SALE

We Have Over 15 Herds Listed For Sale At Private Treaty At Any One Time! Low Somatic Cell Counts! Herd Averages Between 18,000 Lbs. To 23,000 Lbs. Milk! Registered And Grades! Both Tie Stall And Freestall Herds Are Available. Herd Sizes Range From 25 To 200 Cows!

If You Need A Quality Herd, Give Us A Call Immediately. We Have Already Inspected The Cattle And Eliminated The Goose Chases For You.

We Would Be Happy To Bring You To The Herds To Inspect Or Ship Upon Approval!

YOU CAN'T BEAT OUR PRICES!

****HAPPY CUSTOMERS ARE OUR TRADEMARK****

Stonehurst Farm

1561 Lime Valley Road
Selinsgrove, PA 17879
Telephone: Dan Walk 717/687 7476

The CATTLE EXCHANGE

Dave Rama RD 2 Box 79 Delhi, NY 13753
Ph. 607/746-2226 Fax. 607/746-2911
AU-602463-L

LEBANON CO. SPRING PROMISE SALE

April 14, 1994 7:30 p.m.
Lebanon Area Fairgrounds Lebanon, PA

28 Registered Calves and Heifers

Selected Especially for 4-H & FFA Projects

8 Mar. '94 calves 3 Dec. '93 calves 2 Born Sept. '93
Aryshire Holstein Brown Swiss

Sires: Polo 2, Tesk, Bova Glow, Jess, Blackstar, Belltone, Jed, Cleitus 2, Mark Horace, Broker

Sponsored by Lebanon Area Fair Dairy Committee, Lebanon Co. Holstein Club

Auctioneer:
Harry H. Bachman
138 N. College Ave.
Annville, PA
717-867-1809

Pedigrees:
Dale L. Hoover
517 Horseshoe Pike
Lebanon, PA
717-867-2489