

**Public Auction Register**

Closing Date Monday 5:00 P.M.  
of each week's publication

SAT. APR. 23 - 9AM At Miller's Auct. Center, Bethel, Pa. Liquidation of Local contractor equip. Dwight Miller, auct.

SAT. APR. 23 - 9AM Farm equip., shop equip. & antiques. RD Mt. Pleasant Mills, Pa. Luella Smith & the late J. Brooks Smith. Hassinger/Courtney, aucts.

SAT. APR. 23 - 9AM Antique tools, antiques, personal property. At Liberty Fire Hall, 339 E. Main St., New Holland, Pa. By Ruth M. Buckwalter. Leary, aucts.

SAT. APR. 23 - 9AM Tractors, combines, farm equip, riding mowers, car, misc. Southern York Co., Pa. From I-83 exit #2 (Glen Rock) follow Rt. 216W ±3.2 mi to sale on left. Owner: Delores (Debbie) Dehoff. Melvin Haines, Ralph Bronneman, Russell Wright, auct.

SAT. APR. 23 - 9AM, Real Estate, Household Goods, Antiques & Avon Items. Located Along Rt. 322, 5 Miles East Of Honey Brook, N. Brandywine Twp., Chester Co. Open House April 9th From 1-3 P.M. Terms By, Estate Of Ruth N. Lapp.

SAT. APR. 23 - 9AM, (Nice 12-Acre Farmette), Farm & Lawn Equip., Power & Hand Tools, Housegoods & Furn. Located 1680 Robert Fulton Hwy., East Drumore Twp., Lanc. Co., Pa. (Approx. 5 Mi. S. Of Quarryville Along Rte. 222). Sale By, Joseph H. & Roberta L. Schneider. Roy & Eric Probst, Aucts.

SAT. APR. 23 - 9:30AM Real estate, car, riding mower, household goods, antiques, tools Located at 30 Graybill Rd., Bareville, Pa. close to Harry's Furniture store, 3 blocks off of Rt. 23 Lanc. Co. By Susie K. Reasler. Snyders Auction Co.

SAT. APR. 23 - 9:30AM Real estate, antiques, HH goods, tool and lawn equip., furniture, appliances and more. 1717 Bannister St., York, Pa. From York take Carlisle Ave. West (Rt. 74) past York fairgrounds turn left onto Bannister St., go approx. 3 blocks, look for signs. All American Auction Service.

SAT. APR. 23 - 9:30AM, Milk Bottles, Winross Trucks, Books, Dudley Watch, Antiques & Household Goods. Selling From Vanheim, E-Town & Mt. Joy Households. Located Farmersville Fire Hall. E.M. Mury, Assoc. Aucts.

SAT. APR. 23 - 9:30AM Landscape equip. & tools. From Lanc. take 340 E. to 3rd-in-Hand, turn left on Beechdale Rd. to auction

on left. For Stoltzfus Landscape. Aaron E. Martin, auct.

SAT. APR. 23 - 9:30AM, Liquidation of landscape equip, trucks, skid loader, -785 NH, Hydroseeder & land tools. Auction to be held at 346 Beechdale Rd. 3rd-in-Hand, Lanc. Co., Pa. Aaron E. Martin & Richard L. Stauffer, aucts.

SAT. APR. 23 - 10AM Valuable Real Estate. 545 Sandy Hill Rd., Stevens, W. Jocalico Twp, PA. Rt. 272 N. from Ephrata turn left onto Mt. Airy Rd. approx. 1 1/2 miles, turn right onto Sandy Hill Road. By Lydia B. Eberly Estate. Randal V. Kline, Lloyd Kreider, Roy E. Good, auct.

**OUTSTANDING PUBLIC AUCTION**

SALE NUMBER ONE-Two day session of complete BREWERIANA dispersal of the large extensive collection of Statues, Trays, Tin Over Cardboards Clocks, Tin and Cardboard Signs, Large and Small Animated items, Large Amount Various Sizes Domestic & Foreign Beer Cans, Large Amount Other Brewery Items owned by:

**KENNETH R. HOSTETTER**  
4855 Hanover Road  
Hanover, PA 17331  
**DUE TO FAILING HEALTH,**  
**THE FINE COLLECTION OF**  
**MR. HOSTETTER'S WILL BE**  
**SOLD AT**

**REDDING AUCTION SERVICE**  
1085 Table Rock Road  
Gettysburg, PA 17325  
Telephone 717-334-6941  
FAX 717-334-3525

**AUCTION DATES**  
**FRI., APRIL 29, 1994**  
4:00PM  
**SAT., APRIL 30, 1994**  
9:00AM

Sale Preview, Beginning Friday  
at 11:00 AM

Ron Kikta, Technical Advisor, Telephone  
Evenings 814-749-7183

Member of NABA, ECBA, ABA, BCCA

C. David Redding, Auctioneer  
PA License No. 742-L  
1085 Table Rock Road, Gettysburg, PA 17325

FOR PARTIALLY ILLUSTRATED ITEMIZED  
SALE CATALOG OF OVER 700 LOTS, SEND  
\$9.00 TO REDDING AUCTION SERVICE AT  
ABOVE ADDRESS

Clip Ad for Reference

**PUBLIC AUCTION**  
**POND-DALE FARM**  
**TUES., APRIL 12**  
At 10:00 A.M.

Located in Centre County, 6 miles West of State College, Pa., turn South off Route 322, onto Route 550, travel 9 miles or 4 miles North of Warriors Mark, Pa.; on Route 550.

**FARM MACHINERY**

NH No. 1495 gas 12 ft. haybine (good engine), Gehl No. 4600 dsl. skid loader, Farmall 400 gas tractor, I.H. no. 856 dsl. tractor (crank shaft broken), I.H. no. 806 dsl. tractor (engine tight), I.H. no. 540-4-16 in. semi mount plow, Taylor Way 10 tooth (10 ft.) chisel plow, I.H. 9 ft. disk, Hesston no. 1520 (2000 gals.) liquid manure spreader, N.H. no. 357 grinder-mixer w/21 in. hammermill, Gehl no. 1200 harvester w/pickup and new 2 row corn heads, Gehl no. 99 hi-throw blower, 2 Gehl No. 920 forage wagons w/roofs (1 tandem axle), N.H. forage wagon, 2 gravity bin wagons, bale rack wagon, flat bed wagon, wagon chassis, N.H. no. 256 rake, N.I. no. 323 picker, A.C. 4 row no-till planter w/insecticide boxes, I.H. grain drill, Century 300 gals. field sprayer, Mayrath elevator, set of 34 in. snap on tractor duals, bedding chopper w/Honda 7 h.p. engine, Rissler 230 bu. stationary feed mixer, two 300 gals. fuel tanks, the usual wagon w/ misc. farm items.

TERMS: CASH OR GOOD CHECK  
Food stand

**DENNIS AND MARY BURNS**  
R.R. 1, Box 83  
Warriors Mark, Pa.  
814-692-8317

Mark Glick- Auctioneer  
AU-349-L

**PUBLIC SALE**

Lot, Riding Mower, Wood Working Equip., Tools, Antiques  
**Sat., April 16, 1994**  
9:30 A.M.

Sale to be held at Rear of 29 E. Main St., Reinholds, Pa. Lanc. Co., Pa.  
Lot approx. 1/4 acre located in rear of 29 E. Main St. Reinholds to be sold at 11:00 A.M. lot adjoining Keystone night wear.

**Solo Electric Riding Cart**  
1 Yr. Old  
11 hp. 1 Yr.  
**Old Yardman LT 11-36**  
**Riding Mower w/Bagger**

18" electric B&D mower, chipmate shredder new, new portable air tank, Belsaw 1/4 hp grinder on stand, Craftsman jig saw, Craftsman grinder, Rockwell sander grinder, Craftsman 1/4 hp table saw, Craftsman circular saw, Delta jig saw, Dormeyer radial arm saw 6 1/2", Craftsman sabre saw 3 speed, Craftsman planer, B&D 1/2" hand drill, B&D 1/4" drill stand, Sunbeam gas grill like new, 2 Stricker axes, Kelly Hatchet, craft kits, woodworking patterns, hand saws, levels, c-clamps, files, extension cords, block & tackle, vise, tool boxes, drop light, hand drills, variety of nails & screws, lumber, work benches, saw horses, chisels, Toro electric weed eater, paneling, hand truck, wooden plane, dollie casters, battery charger, old implement wrenches, New Perfection kerosene stove, door knobs, 20" 3 speed window fan, padlocks, gas heater, sm. cheese boxes, meat grinders & parts, shoe lathes, MB Holstein Richland brass hand pump, lanterns, New Holland feed mill wrench, wooden boxes, AW Eberly Store sign Reinholds and oil can & other pcs., iron trough, cigar cutter, sm. iron kettle, wooden butchering canning case, skillets, flat irons, crow nuts show case, showcase, cast iron waffle irons, adv. signs, marbles, depression glass, hallware, drop leaf table, hunting knives, cedar wardrobe, 2 lg. polar bear ice chests, 1 sm. cooler and many more articles, Mowers & Electric riding cart sold at 12:00 p.m.

Terms by, **RUTH FASNACHT**  
Snyders Auction Service  
Paul (717) 733-7052 AU-873-L  
Michael (717) 291-5749  
Richard Funk Atty.

Out of state buyers need current bank letter of credit or cash.

Refreshments

**PUBLIC AUCTION**

**REAL ESTATE**  
**96.3 ACRE FARM**  
**RD 1 PALMYRA, PA**



**SAT., APRIL 30, 1994**  
**TIME: 12 NOON**

**DIRECTIONS: From Harrisburg, PA, Rt 22 East (Allentown Blvd.) to the traffic light at Rt 743 (East Hanover Twp.). Go South on Rt 743 approx. 3 miles to the auction. Signs posted.**

The farm house has 4 bedrooms and bath upstairs. The 1st floor has a large kitchen, dining room, living room and sitting room. The house has oil hot water baseboard heat, basement, attic, well and spetic. There is a 3 bay garage, barn with pole building attached, wagon shed and chicken house.

Shown by appointment only. Call McNeal's Auctioneering at 717-545-5911.

**TERMS: Cash or Certified Check in the amount of \$10,000.00 made payable to McNeal's Auctioneering for the down payment. Settlement within 45 days. Other terms and conditions to be read the day of the auction.**

**NOTE Farm equipment to be sold on April 30, 1994 at 1:00 PM. Full sale bill to follow.**

**The Estate of Henry (Junior) Turns**

**Auctioneers:**  
**Richard and Rick McNeal**  
**Lic.#s AU-001380-L**  
**AU-002189-L**  
**PHONE: 717-545-5911**

**"HORST AUCTION CENTER"**  
**PUBLIC SALE**  
**ANTIQUES, HOUSEHOLD**  
**GOODS, ANTIQUE GUNS**  
**& TOOLS**

**WED., APRIL 6, 1994**  
**AT 2:00 P.M. GUNS 7:30 P.M.**

Sale to be held at the Horst Auction Center, located at the corner of Rt. 322 & Durlach Rd. (approx. 2 1/2 miles west of Ephrata), Ephrata, Lancaster County, PA.

**FURNITURE**

Grained Wood Chest; Blanket Chest; Empire Bureau; OAK - Knockdown Wardrobe; Plant Stands; Clothes Tree; Pressed Back Chairs; MAHOGANY - Gov. Winthrop Desk, Server, Double Bed, Chairs; Depression Bedroom Suite; Hutch; Bookcase; Maple Dinetto Set; Cherry Desk; LANE SOFA w/ RECLINER ENDS; Swivel Rockers; Wing Back Chair; Sofa Bed; Recliner; Living Room Suite; Patio Table & Chairs; Gilder; Filing Cabinet.

**APPLIANCES:** Washer; Dryer; Upright Freezer; **ELECTRIC ORGAN;** Sewing Machine; Microwave; Sweeper; Air Conditioner; Kerosene & Electric Heaters; Dehumidifier; Typewriter; Lamps; Mirror & Sconces; Antique Projector & Movies; Kitchen Appliances; Agate Kettles; Waffle Iron; Flat Irons; Bake Oven; Flatware; Sterling Candlesticks; Brass Candlesticks; Column Mantel Clock.

**CHINA & GLASSWARE**

Transfer China; "Blossom" Plates, Cups & Saucers; Bavarian China; German China; Bone China Cups & Saucers; Hummel Plates; Pressed & Pattern Glassware; Pink Depression; Opalescent Vaseline; Carnival Glass; Collection of Bells; Crocks & Jugs; Dairy Bottles.

**LINENS:** Doilies & Fancywork; Bedspreads; Blankets; Wool Shawl; Rag Carpet; Baskets; Records; Accordion; Hess Trucks.

**ANTIQUe GUNS**

**RIFLES:** U.S. Springfield Model 1873 .45 Cal.; U.S. Model 1873 .45 Cal.; Remington Arms Co. U.S.N. #2526 .45 Cal.; J. Stevens .22; PA Rifeworks .35 Cal.; Flintlock - U.S.M.T. Wickham 1833 Phila. .70 Cal.

**SHOTGUNS:** Winchester Repeating Arms Co. 12 Ga.; P. Simpson Double Barrel Hammer; V.J. Renkin Double Barrel Hammer.

**PISTOLS:** Colt Cap & Ball Pistol; Smoker #1 .22; U.S. ARM CO. .22 CAL. POCKETKNIFE PISTOL.

**TOOLS:** Hand Tools; Hardware; Fishing Rods & Reels; Lantern; Bow & Arrow Set; Iron Kettle; Canning Jars.

No out of state checks unless accompanied by a current bank letter or prior arrangement with auction service.

Sale For

**MARGARET MARTIN,**  
**JOHN JACOB-HOOVER**

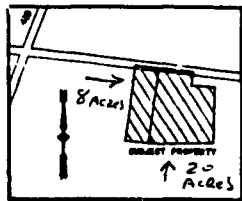
**HORST AUCTS.**  
AU438L  
T. Glenn (717) 858-1331 - (717) 738-3080  
Timothy G. Fax # (717) 738-2132  
Thomas A. "VOICES OF EXPERIENCE"

**AUCTION**

**REAL ESTATE and CONTENTS**  
**SAT., APRIL 9th** at 9:00 AM  
Real Estate Sold at 12 Noon

Selling for the estate of Vernon Snyder.

LOCATION: Tulpehocken Twp. Berks Co., PA From I-78, take exit #8, go south on Rt. 419 about 2 miles. To crossroad, turn left to sale on right. Half way between Strausstown and Rehrersburg. Watch for auction arrows.



REAL ESTATE 1 1/2 story house, with kit. L.R.m, office, laundry on 1st floor. Upstairs has two bedrms. & full baths, oil hot water heat, own well & septic system. Property also has a bank barn, 3 car garage, two story summer house, other buildings on property. Never failing spring. For appointment, call Mrs. Snyder at (717) 933-8519 or auctioneer at (717) 933-5736. NOTE: Property will be offered as 8 acre tract & then 20 acre tract, then property will be offered as one parcel. TERMS: 10% down day of sale, bal. in 45 days or less.

10" Craftsman table saw, bench vise, bench grinder, storage bin, c-clamps, forks & shovels, butcher top bench, SS table, misc. nuts & bolts, brass fittings, 25 cu' chest freezer, pipe wrenches, like new wheelbarrow, masonry tools, weedwacker, elect chain saw, Craftsman drill, sander, jig saw, hand saws, hatchet, tin snips, levels, window fans, log chains, chicken catchers, chicken crates, cast iron water trough, elect. fence chargers, JD #140 riding mower, JD snow blade for mower, JD #80 garden trailer, Parker lawn sweeper, misc. lumber, step ladder, turkey items, floor model safe, two hole corn sheller, Rem. 22 pump mod. 21, Rem. 410 mod. 11-18, Old wicker doll coach, child's wicker rocking chair, 2 cedar chests, wood chest drawers, old peanut dolls, old hand painted etched egg, 1883 & signed, file cabinet, oak office chair, old redware plate, few carnival pcs., green depression glass, old pictures & frames, wooden benches, Zenith floor model radio, oak flat top desk, oct. shape cement flower stand w/stain glass, assorted coins, davenport pcs. many other misc. items to be sold, don't miss this auction.

Note: If you are looking for a nice farmette, take a look at this one.

Auction For **MABEL SNYDER**

Auctioneer AU-2414-L  
Dwight D. Miller AU002414L Call (717) 933-5736  
Terms: Cash or PA Check.

