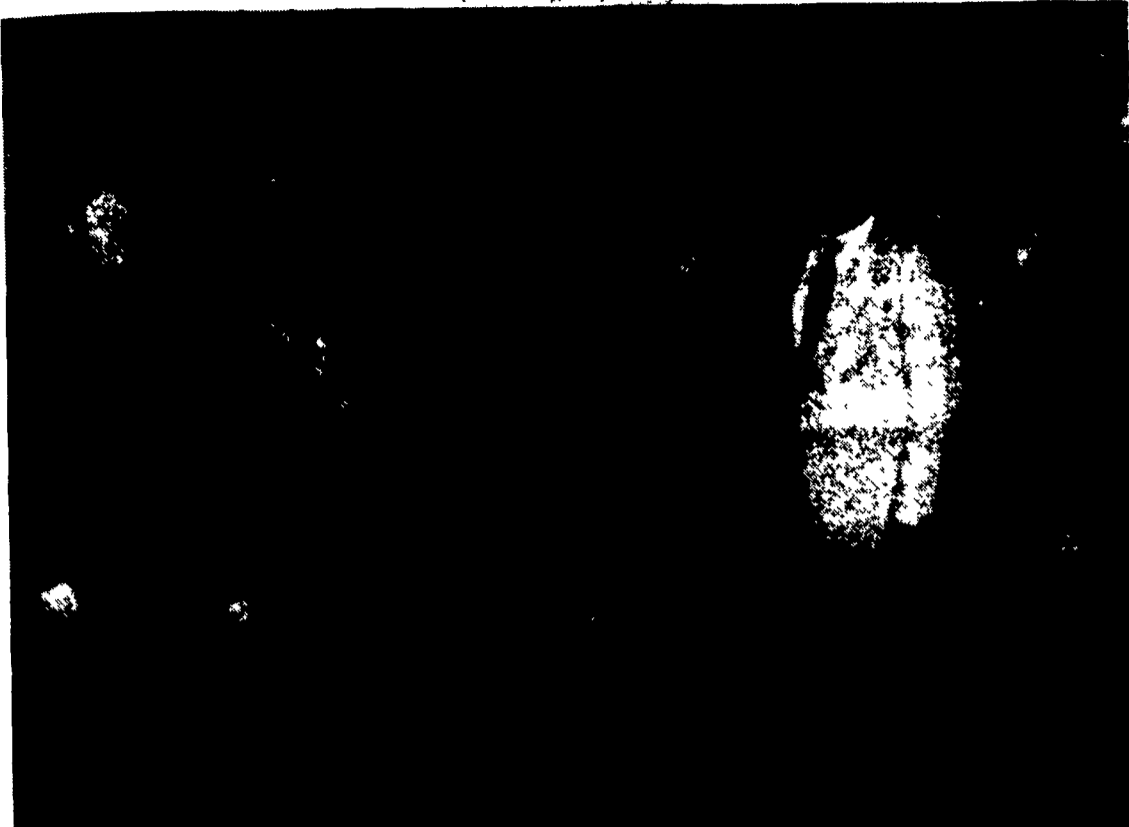


New Luzerne County Extension Director



Michael J. Martin, third from right, is the new Luzerne County extension director. From left, Eugene R. Klein, chief clerk/administrator; Rose Tucker, Luzerne County commissioner; Frank Crossin, Luzerne County commissioners chair; Michael J. Martin, Luzerne County extension director; Jim Phillips, Luzerne County commissioner; and James Brozena, trustee, Penn State Wilkes-Barre campus.

WILKES-BARRE (Luzerne Co.) — Michael J. Martin has been named county extension director for Penn State Cooperative Extension of Luzerne County.

Martin comes to Luzerne County from the University of Vermont Extension System, where he served as a regional extension specialist for 4-H youth and volunteer development. Martin also served as the state 4-H camping specialist and adviser to the statewide 4-H shooting program.

Martin earned an associate of arts degree in environmental science from Berkshire Community College, Pittsfield, Mass.; a bachelor's in communication studies from Oberlin College, Oberlin, Ohio; and a master's of education from Cambridge College, Cambridge, Mass. He also holds a certificate in management of volunteer programs from the Norwich University Center for Volunteer Administration.

Polled Hereford Sire Summary Available

KANSAS CITY, Mo. — The spring Sire Summary of Polled Hereford bulls is available from the American Polled Hereford Association (APHA).

This seedstock selection tool lists nearly 1,600 progeny-proven sires. In the main listing are 816 sires with sufficient progeny proofs to insure accuracies of .6 and up. Sires with fewer progeny are listed in the young sire section.

"This edition contains not only expected progeny differences (EPDs) and accuracies, but also includes numbers of progeny and herds as well as numbers of daughters for each sire," said Dr. John Hough, APHA's vice president for education and research. "And for the first time, confidence intervals are included to describe the relative accuracy of each EPD."

EPDs and accuracies are published for birth weight, weaning weight, maternal milk, milk and growth, scrotal circumference, and yearling weight.

"EPDs in a sire summary are useful for purebred and commercial producers to use in minimizing genetic risk and improving profitability," Hough said. They describe the genetic value of an animal much like a feed tag describes the contents of a sack of feed."

The Polled Hereford Sire Summary carries complete explanations of EPDs, traits, and how to use the numbers. They're available at no charge from American Polled Hereford Association, 11020 NW Ambassador Dr., Kansas City, MO 64153, (816) 891-8400.

YOUR POST FRAME BUILDING HEADQUARTERS

Wickes Lumber is the place to turn for all your packaged building needs. We offer a wide selection of sizes and styles of buildings, perfect for a variety of needs. We also carry a complete assortment of steel for siding and roofing, quality lumber, treated posts, heavy-duty hardware and all the extras. Add delivery and credit plus attentive, knowledgeable

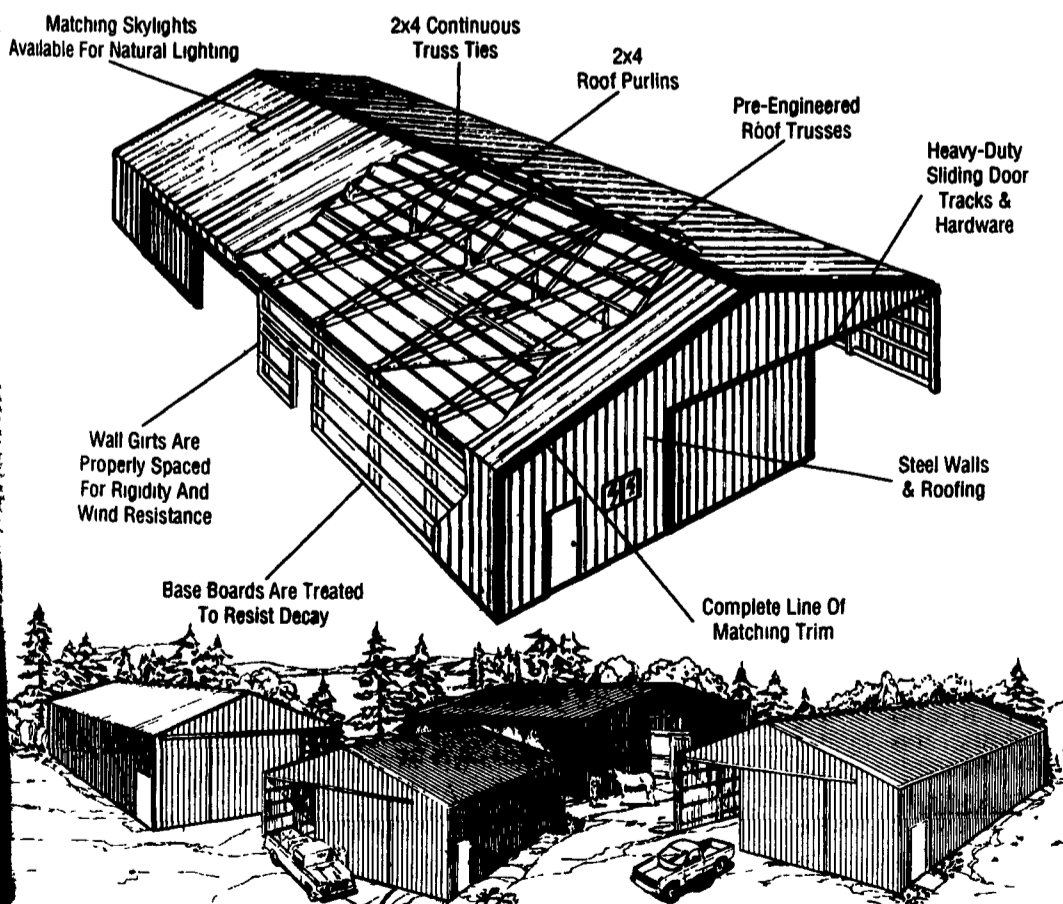
salespeople and you've got it all!

Computer Aided Customizing!

Any of our package designs can be tailored to suit your needs with our Computer Aided Design capabilities. Ask a Wickes Lumber associate for details!



EVERYTHING YOU'LL NEED!



Wickes Lumber

- | | | | | |
|--|--|--|---|---|
| Allentown, PA
681 State Road
(215)967-3181 | Ephrata, PA
82 Garden Spot Rd.
(717)733-6521 | Exton, PA
145 S. Whitford Rd.
(215)363-9550 | Frederick, MD
5219 Urbana Pike
(301)662-4107 | Greensburg, PA
Route 136
(412)527-3531 |
| Harrisburg, PA
451 Amp-Wick Dr.
(717)564-4453 | Phillipsburg, PA
199 Strykers Rd.
(908)859-3600 | Reading, PA
2591 Centre Ave.
(215)921-0606 | Succasunna, NJ
39 Route 10
(201)584-6630 | Swedesboro, NJ
Rt. 322
(609)467-0846 |



Let Your Crops Dine On Alpine

The Company That Offers You High Quality Plant Food At Competitive Prices



Talk To Us About Seed Banded Plant Food And Follar Feeding

Place Phosphorus Where It Does Most Good (Seed Banded)

6-24-6 9-18-9 3-18-18 5-15-15

Check Early Order & Quantity Price

Zimmerman Lime & Fertilizer, Inc.
(717) 733-7674

235 W. Burkholder Dr.

Lititz, PA 17543



MAHONING OUTDOOR FURNACES

"The Natural Way To Heat Your Home"

Burns Coal, Wood, Oil or Natural Gas
FUEL USED IN STANDARD UNIT: WOOD & COAL & WOOD BY-PRODUCTS (SAWDUST, PAPER, ETC.) FUEL USED IN MULTI-FUEL MODEL: SAME AS ABOVE INCLUDING OIL, PROPANE, NATURAL GAS

efficiency Rating 83% to 85% - Cut Emissions by 90%
3-Year Warranty Except Electrical Components (1 Year)

PROUDLY BUILT IN CLEARFIELD COUNTY, PENNSYLVANIA
100,000 - 500,000 BTU 24" - 60"

- ★ The only outdoor furnace made with a Catalytic Combuster ★
- Mahoning Catalytic Combuster Will Help In The Following Ways
- | | |
|---|---|
| 1 Burn one cord of wood which equals 166 gallons of oil | 4 You get more heat from a log compared to the non-cat furnace! |
| 2 Your fuel source becomes enormous, inexhaustible and poses few risks to public safety | 5 More burn time - less reloading time! |
| 3 Over all efficiency of 85% which means the heat no longer goes up the chimney! | 6 Zap 90% of pollutants made from fire source |
| | 7 Saves you a lot of money! |
| | 8 User friendly - emits no smoke! |

CLYDE K. ALDERFER (717) 539-8456
Box 246, Rt. #1, Mt. Pleasant Mills, PA 17853