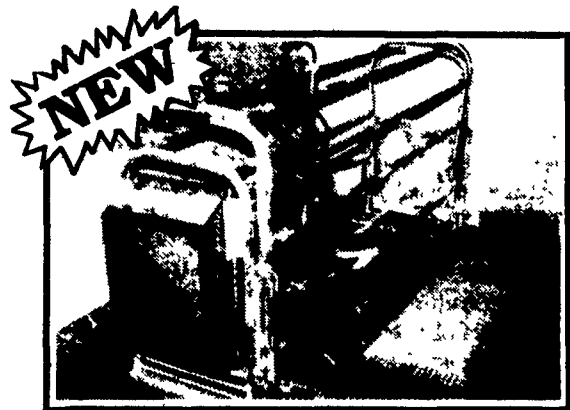


FARMER BOY AG INC.

Your Complete Poultry & Swine Building & Equipment Center



FARROWING CRATE
Adjustable Swing Side w/Pig Saver Bar

HOG CONFINEMENT EQUIPMENT



BREEDING/GESTATION STALLS



HORIZONTAL FENCING
Also: Vertical Fencing

QUALITY
GSI
BINS

We Assemble, Deliver & Set-Up Bins On Your Farm



The Sunne TF115 Thermostat Has A Sealed Mided Plastic Case With All Exposed Metal Parts Of Stainless Steel, Intended For Applications That Need A Rugged Weatherproof Type Control Suitable For Either Heating Control Or Cooling Control.

PUMP OUT PIT FAN



FAN SIZE	FAN MODEL	MOTOR H.P.	PROP RPM	0	05
8"	POPF-8	1/15	3400	585	570
10"	POPF-10	1/6	3400	1155	1140

Many manure storage pits have been constructed without providing for ventilation of the pit, particularly in buildings constructed several years ago when pit storage was first popular. A non-ventilated pit results in a build-up of harmful caustic gases, such as carbon dioxide, hydrogen sulfide, methane, ammonia and mercaptans. Hydrogen sulfide and carbon dioxide are heavier than air and, as the level of pit waste rises closer to the slats, the gases are forced closer to the animals. Results of inhaling these gases may be deep, fast breathing from CO₂. Hydrogen sulfide is one of the most toxic gases to animals and humans associated with liquid manure storage. This gas can cause severe irritation to the eyes and respiratory system and sometimes can result in death.



HEAT LAMPS

FLOORING

TANDEM PRODUCTS, INC.
LIVESTOCK EQUIPMENT



Tenderfoot/NS

For Small Animals Up To 100 Lbs. Tenderfoot/NS (Nursery) is specifically designed for use in standard nurseries and will accommodate pigs up to 100 lbs. Tenderfoot/NS is also used for many other small animal applications such as zoos, dog kennels, etc.



A Safer Warmer Bedding-Type Environment. When installed in the outer edge of crate area of a farrowing crate, Tenderfoot/NS will protect your newborn piglets with a soft, warm bedding type environment. Those painful and costly bruises, abrasions and other disconcerting problems are greatly reduced. Tenderfoot/NS's gauge expanded metal has hole openings that measure 1/2" x 1/2".

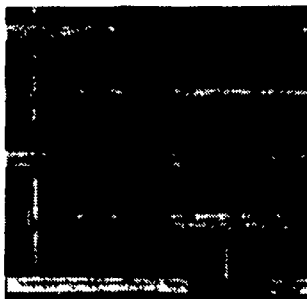
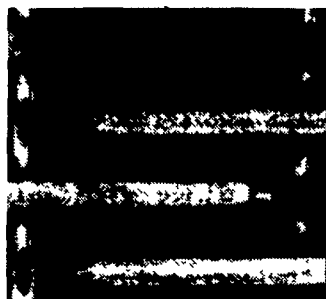
It's Time To Change Your Bulb® PAR HEAT LAMP

Features/Benefits

- 175 W
- 30% Wattage Reduction. Savings Of Over \$37 Per Lamp Over The Life Of The Lamp = Energy Saving • Long Life

BOSS HOG FLOORING FOR ALL CONFINEMENT NEEDS

Woven Wire "New" Size 3/8"x3" - 5/16" Wire In Stock
3/8"x2" - 5/16" Wire
3/8"x1 1/2" - 243" Wire



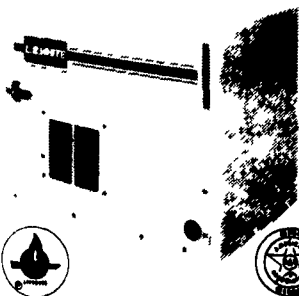
Spring Clearance

On L.B. White Heaters

AGRICULTURAL HEATERS (45,000-75,000 Btuh) with Hot Surface Ignition

- Durability • Performance • Safety • Quality

"Master Control" Panel--All control components totally enclosed for protection from dust, dirt and moisture.
• Totally Enclosed Case--Suitable for washdown
• Hinged Access Panels--Quick and easy access to all components for fast service
• Variable BTUH Output--Let's you adjust from 75,000 BTUH (maximum) down to 45,000 BTUH (minimum)
• Exclusive "System II" Hot Surface Ignition (HSI) Featuring:
• "6-16 LED Analyzer"--6 distinctive light combinations pinpoint up to 16 possible operation interruptions
• Self-Diagnostic Monitoring--Continuously monitors all primary functions
• 15-Second "Chill Guard"--Shuts down fan for 15 seconds during start-up sequence preventing chilling animals
• Auto Fan Shut-Down--If burner shuts down, system automatically stops fan preventing drafts

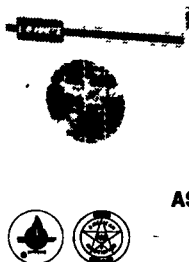


Model AS040

Variable BTUH (15,000-40,000) Pilot Light Ignition

- Dependable • Safe • Durable

- Features:**
- Pilot Light Ignition
 - Fully Protected Gas Valve
 - Variable BTUH Output
 - Eyebolt and Chain Mounting System
 - Internal Gas Pressure Tap
 - Ten-Year Warranty



MODEL AW 230 Agricultural Heater

Variable 100,000-230,000 Btuh

Features:

- Variable Btuh Output
- Totally Enclosed Case
- Fully-Hinged Access Panels
- Eyebolt and Chain Mounting System
- "Master Control" Panel
- 24 v. Control System
- "System II" Hot-Surface Ignition (HSI) System
- Versatile

Demand Quality... Demand The Best... Demand



Full Line Of Parts In Stock For Your Poultry And Hog Needs

Hours: M-F 7:00-5:00; Sat. 7:30-11:30

Swine & Poultry Systems Specialists

FARMER BOY AG.

410 E. LINCOLN AVE. (RT. 422)

MYERSTOWN, PA 17067

PH. 717-866-7565

Check Our Warehouse Prices

WE SHIP UPS

SEE JAY, PAUL OR STEVE FOR YOUR



JAY ZIMMERMAN Sales

PARTS AND EQUIPMENT NEEDS



PAUL HIGH Sales



24 Hour Service