

Top Pennsylvania DHIA Herds By County For February

(Continued from Page B22)

PAUL MANNING	45.5	18425	709	3.8	607	3.3
REBECCA DARLING JER	22.7	17339	713	4.1	566	3.3
ELWOOD WHITE	35.8	16843	532	3.2	526	3.1
HARRY ALLAN MC LAIN	44.3	15360	544	3.5	492	3.2
LEE COURTRIGHT	34.3	14099	517	3.7	456	3.2
CARL J ROSIAK	37.1	13135	500	3.8	428	3.3
MERLE + ROBERT LEWIS	53.3	11988	426	3.6	369	3.1

J ROBERT KINDIG	56.3	19522	738	3.8	622	3.2
NELSON R HABUCKER	68.3	19035	724	3.8	619	3.3
GLENN R BINKLEY	32.0	19822	697	3.5	617	3.1
MERVIN R STOLTZFUS	36.0	19736	724	3.7	616	3.1
TOM + DALE SMITH	23.6	19159	666	3.5	610	3.2
DALE DAVIS	48.8	18974	672	3.5	604	3.2
HAR-VIL ACRES FARM	46.8	19279	689	3.6	595	3.1
RAYMOND H GOOD	74.1	19099	675	3.5	588	3.1

SNYDER DAIRY FARM	100.7	19749	740	3.7	649	3.3
RED SPRINGS FARM	52.6	20007	832	4.2	648	3.2
JOE HAMMERSCHIDT	62.3	19261	660	3.4	635	3.3
KENLAND FARM	79.7	20129	723	3.6	632	3.1
KAMADU JERSEYS	56.2	16585	777	4.7	628	3.8
LEPT-MAC FARM	62.7	20005	749	3.7	628	3.1
S WELLS MC CREADY	72.5	19961	686	3.4	627	3.1
GREEN LANE FARM	58.5	19510	687	3.5	614	3.1

LANCASTER

J HAROLD FRITZ	151.4	22777	826	3.6	727	3.2
WILMER L HORST	56.7	21082	752	3.6	658	3.1
SINGING MAPLE FARMS	78.4	20664	763	3.7	657	3.2
PAUL H ROHRER & SONS	166.0	20977	733	3.5	646	3.1
LOG HOUSE FARM	55.8	20228	669	3.3	637	3.1
CHRIST F KING	40.3	20488	697	3.4	623	3.0
FRANKLIN VIEW FARMS	123.3	19368	717	3.7	622	3.2

LAWRENCE

TROTACRE FARMS	44.3	24415	885	3.6	768	3.1
MIKE BOHONIK	34.4	23292	747	3.2	740	3.2
PAUL LAWRENCE	50.3	21224	748	3.5	675	3.2
WILSONS DAIRY FARM	45.3	21156	697	3.3	672	3.2
B TIMOTHY STURGBON	55.7	20586	771	3.7	660	3.2
RICHARD J KIND	177.4	20509	736	3.6	656	3.2

(Turn to Page D2)

Lancaster County To Conduct Sheep Shearing School

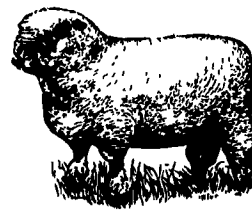
LANCASTER (Lancaster Co.) — Once again, the Lancaster County Sheep and Wool Grower's Association and Penn State Co-operative Extension will conduct a two-day Sheep Shearing School for area shepherds.

The school will be held on Friday, April 8 and Saturday, April 9 from 9 a.m. to 4 p.m. both days at the Rod Nissley Sheep Flock near Campbelltown, Lebanon County. Mike Fournier, Bucks County extension agent, will serve as instructor for the school.

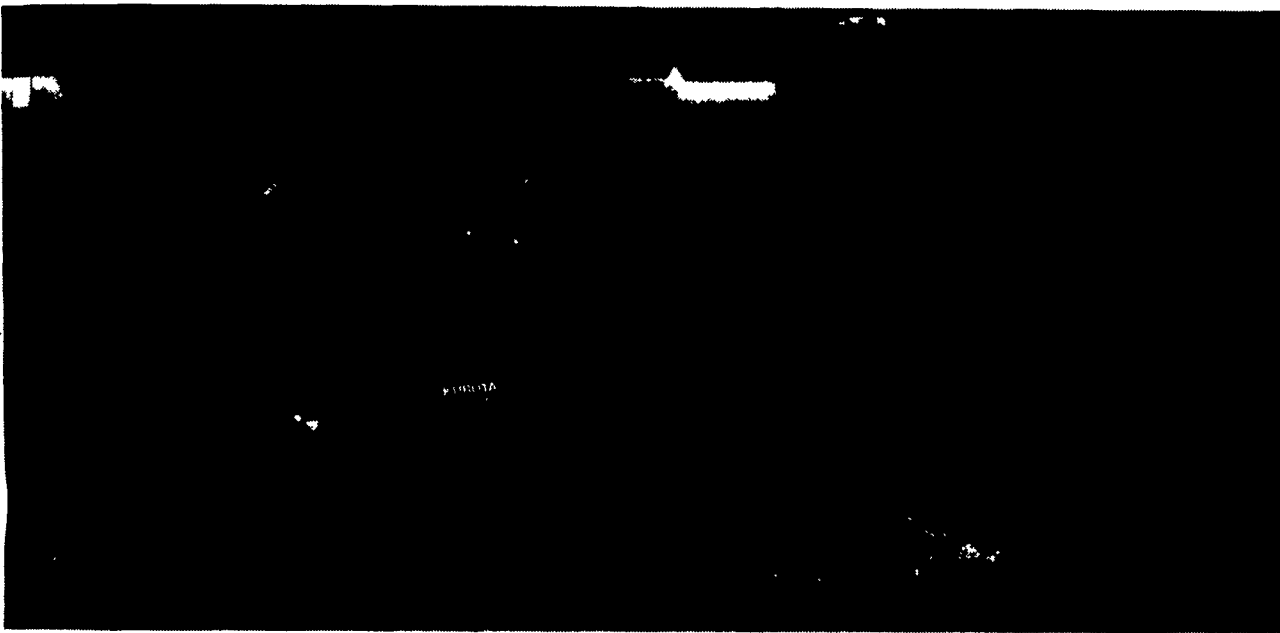
Cost for the school is \$15 for members of LCSWGA and \$25 for non-members. Shearing equipment will be provided by Penn State University.

During the past seven years, 116 individuals have been instructed in the art of sheep shearing at the Lancaster County School.

For more information and registration details, call Chester D. Hughes, Lancaster County extension livestock agent at (717) 394-6851 before April 4.



THE ONLY THING SHAKING IS THE COMPETITION



Introducing Kubota's new Grand L-Series diesel tractors. Four compact models with 25 to 37 PTO HP. Designed to take on any job that demands power and mobility.

Available in 2WD and 4WD, the Grand L-Series features Kubota's new ETVCS diesel engines that run quietly with cleaner emissions. Operator friendly with power steering, tilt wheel and enclosed muffler for greater visibility. The roomy flat operator's deck is ISO mounted to greatly reduce vibration.

The Grand L-Series has a choice of transmissions, the new fully synchronized main transmission with Synchro-shuttle allowing shifting-on-the-go through the 4 main gears, or the new GST (Glide Shift Transmission) which allows shifting-on-the-go through all 8 speeds. Both run smoothly and efficiently with the new larger diameter, larger capacity clutch.

The Grand L-Series powerful hydraulic system, independent rear PTO and 3-point hitch hook up to a wide range of quick-attach implements to handle any job.

Power and mobility: Kubota's Grand L-Series has it covered.

Kubota Tractor Corporation markets a full line of tractors through a nationwide network of over 1,000 dealers



See Your Local Kubota Dealer

PENNSYLVANIA

- Avondale**
THOMAS POWER EQUIP., INC.
215-268-2181
- Bloomsburg**
TRACTOR PARTS CO.
717-784-0250
- Chambersburg**
STOFFER BROS., INC.
717-263-8424
- Cochranville**
STOLTZFUS FARM SERVICE, INC.
215-593-2407

- Elizabethtown**
MESSICK FARM EQUIP. INC.
717-367-1319
- Jersey Shore**
THOMAS L. DUNLAP
717-398-1391
- Honesdale**
MARSHALL MACHINERY, INC.
717-729-7117
- Lebanon & Lancaster**
KELLER BROS. TRACTOR CO.
717-949-2000
717-569-2500

- Mifflinburg**
MIFFLINBURG FARM SUPPLY, INC.
717-966-3114
- New Berlinville**
ERB & HENRY EQUIPMENT, INC.
215-367-2169
- Reading**
NICARRY EQUIPMENT, INC.
215-926-2441
- Stroudsburg**
SEBRING'S POWER HOUSE
717-421-8980

- West Chester**
WENNER FORD TRACTOR, INC.
215-399-9615
- York**
YORK TRACTOR, INC.
717-764-1094
- MARYLAND**
Hagerstown
ARNETT'S GARAGE
301-733-0515

NEW JERSEY

- Flemington & Clinton**
PONIATOWSKI BROS. EQUIP. CO. INC.
908-735-2149
- Hainesport**
MATERIAL HANDLING SYSTEMS
609-267-6100
- DELAWARE**
Newark
NEWARK KUBOTA, INC.
1-800-955-3031

STOLTZFUS SPRAY PAINTING

Specializing In Farm Buildings
And houses

- Stone & Brick Restoration
- Sandblasting
- Pressure Washing
- Aerial Ladder Equipment

"I personally price and do the work
so let my experience work for you"

CALL FOR FREE ESTIMATE

139 Newport Rd., Leola, PA 17540

717-656-8003

HERNIA?

No hernia is unreparable, even after several previous failed attempts. We specialize in outpatient hernia repairs, and most patients are able to return to full work within several days.

PLEASE CALL COLLECT OR WRITE FOR MORE INFORMATION
MID ATLANTIC SURGICAL SERVICES

217 Harrisburg Ave., Suite 201
Lancaster, PA 17603

(717) 295-5454

MOST INSURANCE ACCEPTED