

National Grain Market

St. Joseph, Mo.

Wednesday, March 23, 1994

DAILY NATIONAL GRAIN SUMMARY GRAIN AND SOYBEAN PRICES REGAINED SOME OF TUESDAY'S MODERATE DECLINES, SUPPORTED BY DRY WEATHER CONDITIONS IN WHEAT AREAS, GOOD DOMESTIC DEMAND AND LIMITED FARMER SELLING. WHEAT 1 TO 4 CENTS HIGHER. CORN 1 TO 2 CENTS HIGHER. SORGHUM 1 TO 3 CENTS HIGHER. SOYBEANS 7 TO 10 CENTS HIGHER. EXPORT WHEAT DEMAND HAS BEEN FAIRLY ACTIVE THE PAST FEW DAYS AND REPORTS EGYPT IS SEEKING 500,000 TONNES EEP WHEAT, BOOSTED PRICES. SOUTHWESTERN GREAT PLAINS AREAS CONTINUE DRY. CORN PRICES CLIMBED ON SLIGHT FUND BUYING, LIGHT FARMER SELLING AND SPILL-OVER STRENGTH FROM BEAN PITS. FARMERS PREPARING EQUIPMENT AND ANXIOUS ABOUT BEGINNING PLANTING. SOYBEAN PRICES ALSO ADVANCED ON FUND BUYING ON THE BOARD AND LIMITED FARMER SELLING. STRONG SOYBEAN USAGE ADDED STRENGTH

TO BEAN PRICES.

EXPORT NEWS: USDA ACCEPTED ONE BID TO SELL 6,000 TONNES HARD RED SPRING WHEAT TO NICARAGUA UNDER EEP FOR JUNE SHIPMENT. USDA'S CCC BOUGHT 20,000 TONNES SOFT RED WINTER WHEAT FOR DONATION TO PAKISTAN FOR APRIL SHIPMENT. THE CCC BOUGHT 10,000 TONNES SOFT RED WINTER WHEAT FOR DONATION TO AFGHANISTAN FOR APRIL SHIPMENT.

DATE CHANGE YEAR AGO TRUCK BIDS: 03/23/94 03/22/94 03/24/93 WHEAT: KANSAS CITY 3.50-3.51 UP 4-3 3.75-3.77 MINNEAPOLIS 4.33 3/4 UP 3 1/2 3.90 3/4 PORTLAND 3.46-3.47 UP 1 3.87-3.88 ST. LOUIS 3.25-3.31 UP 3-4 4.14-4.17.

CORN, U.S. NO. 2 YELLOW: KANSAS CITY 2.85-2.87 UP 1 2.28-2.29 MINNEAPOLIS 2.77 UP 1 1/4 2.18 3/4 SO. IOWA 2.83-2.85 UP 1-2 2.27-2.30 OMAHA 2.70-2.71 UP 1 2.15-2.17.

SOYBEANS, NO. 1 YELLOW: KANSAS CITY 7.06-7.07 UP 10-9 5.84-5.87 MINNEAPOLIS 6.83 1/2 UP 7 1/2 5.76 1/4 SO. IOWA 6.89-6.98 UP 7 5.84-5.88 C. ILL. PROCESSORS 6.99 1/2-7.05 1/2 UP 7 1/2 5.90 1/4-5.99 1/4.

*TRUCK BIDS FOR KANSAS CITY, US NO. 1 HARD RED WINTER

WHEAT, ORDINARY PROTEIN. MINNEAPOLIS, US NO. 1 DARK NORTHERN SPRING WHEAT, 14% PROTEIN. PORTLAND, NO. 1 SOFT WHITE WHEAT, ST. LOUIS, NO. 2 SOFT RED WINTER WHEAT.

FUTURES CLOSE: KANSAS CITY (MAY) WHEAT 3.30 1/2 UP 2 1/4 3.29 3/4 MINNEAPOLIS (MAY) WHEAT 3.33 3/4 UP 3 1/2 3.30 3/4 CHICAGO (MAY) WHEAT 3.33 1/4 UP 3 1/2 3.47 1/2 (MAY) CORN 2.84 UP 1 1/4 2.28 3/4 (MAY) SOYBEANS 6.93 1/2 UP 7 1/2 5.92 1/4.

EXPORT: BARGE OR RAIL, PORT OF NEW ORLEANS OR NORTH TEXAS GULF. NO. 1 HARD RED WINTER WHEAT ORDINARY PROTEIN 3.78 1/2 UP 2 1/4 4.04 3/4-4.06 3/4 NO. 2 SOFT RED WINTER WHEAT 3.58-3.59 1/4 UP 3-DN 3/4 4.42 1/2 NO. 2 YELLOW CORN 3.05-3.06 1/2 UP 2-2 1/2 2.51-2.52 NO. 2 YELLOW SORGHUM RAIL 5.18 UP 2 BARGE 5.16 UP 1 4.37 4.44 NO. 2 YELLOW SOYBEANS 7.22 1/2-7.23 1/2 UP 7 1/2 6.12 3/4-6.14 BIRD.

THIS REPORT A SERVICE OF U.S. DEPARTMENT OF AGRICULTURE, LIVESTOCK AND GRAIN MARKET NEWS, ST. JOSEPH, MISSOURI.

Pa. Grain

Monday, March 21, 1994

Report supplied by PDA

COMPARED WITH THE MARKET FOR LAST MONDAY, FOR SOUTHEASTERN, CENTRAL, AND SOUTH CENTRAL PA: CORN UNEVEN, MOSTLY STEADY TO .07 HIGHER, WHEAT STEADY TO .05 HIGHER, BARLEY UNEVENLY STEADY, OATS MOSTLY STEADY, EAR CORN STEADY TO STRONG, SOYBEANS STEADY TO STRONG.

SOUTHEASTERN PENNSYLVANIA CORN NO. 2-Y RANGE 3.15-3.34, AVERAGE 3.23, CONTRACT FOR HARVEST 2.62-2.87; @WHEAT NO. 2 RANGE 3.39-3.64, AVERAGE 3.52, CONTRACT FOR HARVEST 3.16-3.39; BARLEY NO. 3 RANGE 2.40-2.80, AVERAGE 2.63, CONTRACT FOR HARVEST 1.95-2.05; OATS NO. 2 RANGE 1.60-1.95, AVERAGE 1.80; SOYBEANS NO. 1 RANGE 6.75-7.07, AVERAGE 6.86, CONTRACT FOR HARVEST 6.23-6.39; FEW REPORTED GR. SORGHUM #2 RANGE 2.80, AVERAGE 2.80; CONTRACT FOR HARVEST 2.50; FEW REPORTED NEW EAR CORN RANGE 87.00-110.00, AVERAGE 92.86.

SOUTH CENTRAL PENNSYLVANIA

CORN NO. 2-Y RANGE 3.25-3.30, FEW REPORTED 3.00, AVERAGE 3.25; LIGHT GARLICKY & BETTER WHEAT NO. 2 RANGE 3.09-3.40, FEW REPORTED 3.36, AVERAGE 3.27; BARLEY NO. 3 RANGE 1.60-1.90, FEW REPORTED 2.10, AVERAGE 2.45; OATS NO. 2 RANGE 1.60-1.90, AVERAGE 1.78; SOYBEANS NO. 1 RANGE 6.50-6.91, AVERAGE 6.69; FEW

REPORTED NEW EAR CORN RANGE 80.00-100.00, AVERAGE 90.50.

SOUTHEASTERN, CENTRAL & SOUTH CENTRAL SUMMARY CORN NO. 2-Y RANGE 3.15-3.36, AVERAGE 3.35; LIGHT GARLICKY & BETTER WHEAT NO. 2 RANGE 3.25-3.65, AVERAGE 3.44; BARLEY NO. 3 RANGE 2.40-2.80, AVERAGE 2.57; OATS NO. 2 RANGE 1.60-1.95, AVERAGE 1.79; SOYBEANS NO. 1 RANGE 6.50-7.07, AVERAGE 6.81; NEW EAR CORN RANGE 80.00-105.00, AVERAGE 90.50.

CENTRAL PENNSYLVANIA CORN NO. 2-Y RANGE 3.15-3.36, AVERAGE 3.27; LIGHT GARLICKY & BETTER WHEAT NO. 2 RANGE 3.35-3.65, AVERAGE 3.43; BARLEY NO. 3 RANGE 2.40-2.80, FEW REPORTED 3.00, AVERAGE 2.61; OATS NO. 2 RANGE 1.70-1.90, AVERAGE 1.79; SOYBEANS NO. 1 RANGE 6.60-7.00, AVERAGE 6.64; FEW REPORTED NEW EAR CORN RANGE 80.00-90.00, AVERAGE 84.33.

WESTERN PENNSYLVANIA CORN NO. 2-Y RANGE 2.95-3.15, AVERAGE 3.01; LIGHT GARLICKY & BETTER WHEAT NO. 2 RANGE 3.25-3.50, AVERAGE 3.42; BARLEY NO. 3 RANGE 2.40-2.51, AVERAGE 2.46; OATS NO. 2 RANGE 1.40-1.87, AVERAGE 1.65; SOYBEANS NO. 1 RANGE 6.50-6.75, AVERAGE 6.63; FEW REPORTED OLD EAR CORN RANGE 65.00-100.00, AVERAGE 82.50.

MONTH AGO CORN NO. 2-Y 3.28; LIGHT GARLICKY & BETTER WHEAT NO. 2 3.63; BARLEY NO. 3 2.51; OATS NO. 2 1.77; SOYBEANS NO. 1 6.69; FEW REPORTED NEW EAR CORN 88.83.



MILK. IT DOES A BODY GOOD.

CRAIG'S HOG BUYING STATIONS

Four Locations To Serve You!

Receiving Butcher Hogs:

SHIPPENSBURG
Wed. & Sat.
(717) 532-5224

All Stations Open 7:30 am to 11:00 am

GREENCASTLE
Mon., Wed., Sat.
(717) 597-2315

MARTINSBURG
Saturday
(814) 793-2311

We Still Buy Hogs The "Old Fashioned Way"

THOMASVILLE
Wednesday
(717) 792-2248

- No Advance Scheduling
- No Consignment Too Small Or Too Large
- Weighed & Paid For Upon Arrival
- Competitive Prices Paid For Light Weight Hogs, Sows & Boars

For More Information Contact Jeff Craig At (717) 532-5224

Kiln Dried
WOOD SHAVINGS and SAWDUST

- Great for dairy or horses
- Delivered in trailer load lots
- Year round supply
- Reasonably priced

717-653-5935
J.D. Martin, Inc.
Mount Joy, PA

HAY, STRAW & GRAIN SALES

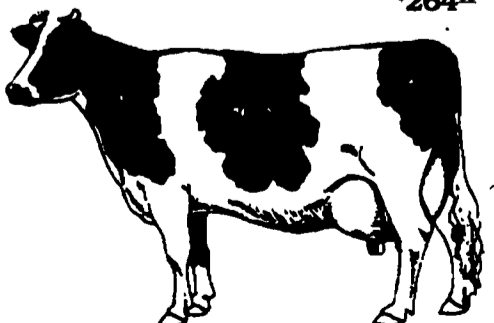
Hay And Straw Sales Will Start At 10 A.M. Every Wed.

GOOD'S AUCTION
11 North Maple Ave.
Leola, PA 17540
717-656-8911
717-656-9554

NEED TO CUT THE FEED BILL?

NEW DAIRY BLEND COMPLETE AND CONCENTRATE FEEDS

COMPLETE FEEDS	CONCENTRATE FEEDS
#79516 Dairy Blend Flakes 16% All Natural \$166 ⁷³	#51232 32% All Natural Protein Pellets \$224 ²⁴
#79518 Dairy Blend Flakes 18% All Natural \$175 ²¹	#51238 38% All Natural Protein Pellets \$251 ³⁶
#79520 Dairy Blend Flakes 20% All Natural \$184 ⁰²	#50734 34% All Natural Protein Pellets w/Steam Flaked Soybeans \$264 ⁰²



Bulk Feed Available in 1 to 24 Ton Loads

Feed prices for Week of March 28 and Subject to Change Weekly with Grain Market

Includes 8 ton volume discount and cash discount of 2% due 15th following month. Deduct additional \$3.00 per ton if paid in 10 days

PENNSYLVANIA CUSTOMER SERVICE DEPARTMENT OPEN 24 HOURS A DAY
FAX 1-800-722-0167 • MAIL DEL. & FAX 1-800-722-0167

pennfield feeds

NEW HOLLAND SALES STABLES INC. THE ACTION AUCTION

LIVESTOCK IS OUR ONLY BUSINESS

MONDAY

SLAUGHTER HOGS EARLY BIRD HOG SALE
7:30 A.M.
Sell Your Hogs At New Holland Sales Stables, Inc. See them weighed, sold and pickup your check.

10:00 A.M. HORSES MULES

1:30 P.M. BEEF SALE SHEEP GOATS CALVES

THURSDAY

Beef Auction 10:00 A.M.

BULLS, STEERS, BEEF COWS

1:00 P.M. STOCKERS & FEEDERS

11:30 A.M. SHEEP GOATS CALVES

WEDNESDAY

HEIFER SALE 11:00 A.M. COW SALE 12:00 NOON

HEIFERS BULLS DAIRY COWS

We have the usual run of 50 to 100 Heifers, all ages Loads of fresh cows and springers from our regular shippers. Also some local fresh cows and springers.

1:30 P.M. FEEDER PIG SALE

Pigs are accepted after 6:30 A.M. State graded from 8 to 12 Dairy Barn and Feeder Pig Barn are cleaned and disinfected weekly for your protection.

NEW HOLLAND SALES STABLES, INC.

12 Miles East of Lancaster Off Route 23, New Holland, Penna.

MANAGERS
Norman & David Koib - 717-397-5538
Field Representatives
Luke Eberly - 215-267-6608 738-1865
Homer Eberly - 215-267-3047
Ron Ranck - 717-656-9849

Sale Barn Office Manager
Roger Floyd - 717-354-4341
FAX #717-355-0706

Order Buyer
Paul Good - 215-445-6662