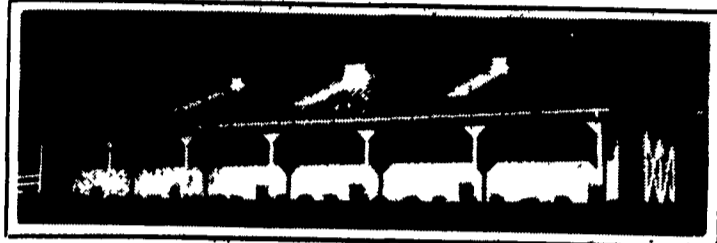


AGRI-INC.

Custom Built Farm Buildings
Designed To Your Needs



DAIRY COMPLEX



HORSE STALL BARN

Let Our Experience Work For You

- Dairy Complexes And Replacement Stock Facilities
- Horse Stall Barns And Riding Arenas
- Workshop And Machinery Storage Buildings
- Timber Column Buildings For Light Commercial

AGRI-INC. The Construction Professionals

151 E. Farmersville Rd., Ephrata, PA 17522
(717) 354-4271

Serving The Agricultural Industry For Over 25 Years



Public Auction Register

Closing Date Monday 5:00 P.M.
of each week's publication

MARCH

SAT. MAR. 26 - 9AM Antiques, oriental rugs, estate jewelry, fine furniture, dolls, glass & china. Bonnie Brae Auction, Rt. 724, Spring City, Pa. (8 mi. W. of Valley Forge, Pa.). Richard J. Moyer, auct.

SAT. MAR. 26 - 9AM Atlas American Legion Post 804 Rt. 61, Atlas, Pa (Next to the Uni Mart as you approach Mt. Carmel). Furniture, collectibles, misc. household. Ray Moncavage, auct.

SAT. MAR. 26 - 10AM Farm machinery, butchering equip, household. Located at 16133 Broadfording Road, Hagerstown, Md. From Hagerstown take Rt. 58 West over I-81 5 miles to Route 63, turn left go 2 miles to Broadfording road;

turn right go 1 1/2 mile, sale on left. Mrs. Phyllis (Donald) Faith. C. Floyd Davis, auct.

SAT. MAR. 26 - 10AM High Clover Farm Machinery & More. Beaver Mt. Farm Antique Tractors, Collectibles & Machinery held at Beaver Mt. Farm, Columbia Co., Rte. 7, Copake, NY. From Rt. 22 Copake, 5 miles west on Cty. Rte. 7; from Ancram, NY, 3 miles E. on Cty. Rte. 7. D. Luther, auct.

SAT. MAR. 26 - 10AM, Approx. 200 Repo's & Off Lease Vehicles. Keystone Public Auto Exchange.

SAT. MAR. 26 - 10AM, Tractors, Trucks, Farm Equipment & A Number Of Different Items. Located Sussex Co. Fairgrounds, Augusta, N.J. Goodrich Auction Service Inc. Aucts.

SAT. MAR. 26 - 10AM Farm auction, tractors, harvestores, line of farm mach. & equip. Located near McHenry, Md. from Washington, Pa. take I-79 S. to Morgantown, WV to I-68 East of US 219 S (Keyser's Ridge) 12 miles to Sang Run Rd. 1 mile to

Lab. Area Fairgrounds, corner of Rocherty and Cornwall Rds., Leb. Co., Leb. Pa. From Rt. 72 S. of Leb. turn left onto Rocherty Rd. or from Rt. 72 N. of Quantin, turn right onto Rocherty Rd. to fairgrounds on right. Lebanon Valley Auction Co.

From Uniontown, PA. take Rt. 40 East to US 219 S. (Keyser's Ridge) 12 miles to Sang Run Rd.; From Cumberland, MD Take I-68 W. to U.S. 219 S. (Keyser's Ridge) 12 miles to Sang Run Rd. From Oakland, MD Take US 219 N. 11 miles to Sang Run Rd. 1 mile to Auction site. L.F. Friend & Son Farms. Customers Auction Service.

MON. MAR. 28 - 12 Noon Dutch Cupboard Restaurant, 523 Baltimore St., Gettysburg, Pa. Refrigeration, Kitchen Majors, Food Service Equip., Furniture. Mark Baranowski, Mark Yelk, aucts.

SUN. MAR. 27 - 1PM Antique Auction at Little Haps Auction, Rt. 22 app. 8 miles E. of Harrisburg at the Rt. 22 Marketplace (Ollies East) Exit 26E off I-81. Little Haps Auction, aucts.

WED. MAR. 30 - 11AM 52 Al Sired Heifers from New England State Herd. To Be Sold at New Holland Sales.

MON., MAR. 28 - 9AM Tractors, tillage, planting & harvesting, other equip.

WED. MAR. 30 - Short Notice Sale, New Holland Sales Stables Inc. Located 12 miles E. of Lanc. Pa just off Rt. 23, New Holland, PA. Owner: Marvin Miller.

THURS. MAR. 31 - 1PM furniture, household, tools, appliances, coins. Estate of Alexander Namet. Located 1 1/10 mile N. of Manchester, along Rt. 181. Turn right at Gray Rock. Rentzel's Auction Service.

PUBLIC AUCTION

Seven and Half Acres Open Land

April 22, 1994

6:30 P.M.

Located in Leacock Township Lancaster County, Pennsylvania. 1 mile East of Bird-in-Hand, half mile North of Rt. 340 on N. Weavertown Rd.

Seven and half acres 278 ft. of road frontage. Creek runs thru East side of property approved for one dwelling and barn.

Terms: 10% down sale day final settlement by June 1, 1994.

Owners

DAVID & SADIE MAE STOLTZFUS

Auct. Steve Steve Jr. Petersheim
AU001349L Info 610-593-2828



A LESSON WELL LEARNED... LANCASTER FARMING'S CLASSIFIED ADS GET RESULTS!

GILMORE FARMS

LARGE PARTNERSHIP DISPERSAL AUCTION

SAT., APRIL 2, 1994 10:00 A.M.

Located in Greenville, Pennsylvania. Take St. Rt. 358 West of Greenville toward the Ohio State Line to N. Stateline Rd., turn North to farm. Or from Ohio take St. Rt. 88 East from St. Rt. 7 at Vernon, Ohio, into Pa. turn North on N. Stateline Rd. to farm. Rt. 358 is accessible from I79 at Exit 34 Clarks Mills, Pa. or Rt. 7 exit in Ohio from I80 (Youngstown-Hubbard) or I90 at the Conneaut, Ohio exit.

Due to health problems we must sell the following:

GOOD LATE MODEL FARM, INDUSTRIAL & DITCHING EQUIPMENT - 7 INTERNATIONAL TRACTORS

7130 Case International front wheel assist w/cab, 18.4x42 direct axle duals in "very good" condition Ser. #JJAD026992 1244 hrs., 1066 International Hydro #2610156U025333, 806 tricycle with the original IH injector pump #238985Y, Farmall MD with 3 pt. conversion kit live hyd., 4366 International 4 wheel drive 20.8x38 duals, 3 remotes, intercooler, 3730 hrs. #297000IU00, Farmall M gas live hyd. #FBK249051X1, Farmall H #321052X1.

SKID LOADER, TILLING MACHINE, DOZERS, BACKHOE

L555 New Holland skid loader w/2 buckets & tire scraper #627596, Buckeye Super D tilling machine, lazer equipped, 3 cyl. Detroit 16" buckets, 6 wheel drive, flotation tires, Lazor alignment LB4 360° receiver #1586 ready to work - sells with a reserve, 450B Case dozer with 6 way power blade and root rake in real good condition #3073224, HD11 Allis Chalmers dozer with root rake and blade #HB4292, 3400 International tractor loader backhoe diesel 15' hoe w/rops.

COMBINE

Gleaner M2 com-soybean special with 4 wheel Drive 30.5x32 tires, 4 row 38" comhead, 15' flexhead with wobble box drive, 15' rigid grain platform #16432 2801 hours, 2 wagon gears made into header carts.

TRUCKS AND TRAILERS

1986 GMC Brigadiere single axle tractor 6V92 Detroit 5x2 26' East aluminum dump trailer w/steel frame, IHC 1700 cab & chassis long wheel base single axle needs motor, GMC 7500 dump truck for on farm use, 8'x24' triaxle Cherokee gooseneck trailer.

TILLAGE EQUIPMENT

IHC 700 7 btd. auto reset pull type plow-field ready, IHC 720 on land 6 btd. auto reset plow, IHC 490 18' manual fold disc, New Holland OD100 10' offset disc, 6' Case pull type offset disc, IHC 45 25' hyd. fold field cultivator, 27' Unverferth rolling basket finisher, 15' Brillion cultimulcher, John Blue 7 shank 3 pt. anhydrous tool bar, Case 10' pull type chisel plow w/coulters, IHC 153 4 row 3 pt. cultivator.

PLANTING EQUIPMENT

IHC 800 4 row 38" corn planter w/dry fertilizer, monitor, insecticide and spray nozzles, Case International Soybean Special 6" spacing grass, seed & fertilizer, Vicon 3 pt. spreader #PS602.

SPRAYING EQUIPMENT

J.D. 200 gal. pull type sprayer 40' booms, set of 200 gal. Snyder saddle tanks w/all the plumbing, 1000 gal. transfer tank, 125 gal. transfer tank on plastic pallet, gas engine transfer pump.

HAYING AND HARVESTING EQUIPMENT

411 New Holland disc-bine good condition, Kuhn 3 pt. Gyro rake, 435 IHC baler w/thrower, 2 Bale King Bale thro wagons, N.H. 28 forage blower, real good, N.H. 26 blower used for H1 moisture com, 782 N.H. forage harvester w/windrow head and 2 row 824 adjustable comhead real good, 94 Gehl forage wagon on 12T gear 16.1x16 tires, good, Gehl box on 10T tandem gear, Gehl box on 8T gear, N.H. 707 1 row mounted chopper good cond., Case 40' hay & grain elevator, 45' mow conveyor, 3 gravity boxes on H.D. gears 10x20 tires 1 w/fertilizer auger, 27' Hutchinson bin sweep, Hutchinson 6"x28' grain auger, Hutchinson 6"x52' auger, H1 Cap grain cleaner w/extra screens and auger.

FEEDING EQUIPMENT

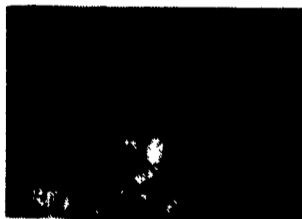
355 New Holland hyd. drive grinder-mixer, Knight 3250 TMR mixer wagon only 3 months old - like new with warranty.

MISC. ITEMS

7' H.D. International 3 pt. rear blade, Woods 72 3 pt. Brushhog, Clay 1000 gal. vac. honey wagon, N.H. 302 1220 gal. slurry spreader, New Idea webb spdr., 3 pt. post driver, flat bed wagon, screw in grain aerators, lots of IHC front suitcase weights, 60 & 120 gal. portable fuel tanks, 15.5x38 - 18.4x38 9 bolt axle duals, bedding chopper with Honda engine, 2 Calf Tel hutches, 4 fiberglass hutches, 6 poly dome hutches, 45-25 PT 31 Winpower PTO alternator, lots of misc. parts.

FEED

200 ton H1 moisture com in 20x60 stave silo. 250 ton com silage in a concrete bunk.



Note: This sale contains some nearly new equipment with the balance used but well cared for - most all of it housed. Gilmores and Shohayda will not be responsible for any accidents. Lunch by the Amish School. Order of Sale: Misc., misc. machinery, haying equip., tractors at 1 P.M. with balance of equipment to follow. TERMS: Cash or check w/proper I.D. and current bank letter of credit.

Owners: **GILMORE FARMS** Arthur, Alvin and John Gilmore Ph. 412-588-6621

Auctioneer: R. Fred Shohayda PA. Lic. #AU-002723-L Ph. 216-772-5905