

Dairy and Livestock Sales

Public Auction Register

Closing Date Monday 5:00 P.M.
of each week's publication

SAT. JUNE 18 - 10AM, Public Auction Of Driving Horses, Antiques, HH Goods, Blacksmith Tools, Carriage. Located Along Rt. 897 In The Village Of Springville, Lanc. Co. Pa. For Jonas & Elizabeth Bell. Snyder's Auction Service.

FRI. JUNE 24 - 1:30PM, State Graded Feeder Pig Sale. Located At Carlisle Livestock Market, Inc. Exit 12 South Off I-81. Left Onto Alexander Spring Road. (717) 249-4511.

JULY

WED. JULY 1 - 7PM, Horse Sale. Located New Holland Sales Stables Inc., 101 W. Fulton St., New Holland, Pa. Norman Or David Kolb, Aucts.

FRI. JULY 8 - 1:30PM, State Graded Feeder Pig Sale. Located At Carlisle Livestock Market, Inc. Exit 12 South Off I-81. Left Onto Alexander Spring Road. (717) 249-4511.

SAT. JULY 16 - 9AM, 106 Acre Farm, Personal Property & Antiques. Located 140 Weaver Rd., Manheim, Pa. Owner, Harry C. Rohrer Trust, Lila & Corene Rohrer Trustees. Kline, Kreider & Good, Aucts.

FRI. JULY 22 - 1:30PM, State Graded Feeder Pig

Sale. Located At Carlisle Livestock Market, Inc. Exit 12 South Off I-81. Left Onto Alexander Spring Road. (717) 249-4511.

AUGUST

FRI. AUG. 5 - 7PM, Horse Sale. Located New Holland Sales Stables Inc., 101 W. Fulton St., New Holland, Pa. Norman Or David Kolb, Aucts.

THURS. AUG. 11 & FRI. AUG. 13 - Martin's Annual Auction Of Carriages, Sleighs And Antiques. Located Lebanon Area Fairground, Lebanon, Pa. Martin Aucts. (717) 768-8108.

FRI. AUG. 12 - 1:30PM, State Graded Feeder Pig

Sale. Located At Carlisle Livestock Market, Inc. Exit 12 South Off I-81. Left Onto Alexander Spring Road. (717) 249-4511.

SAT. AUG. 13 - 6PM Arnold Hog Production sale, Lebanon Area Fairgrounds, Leb., Pa. Harry H. Bachman, auct.

WED. AUG. 17 - 6PM Performance Tested Boar Sale, State College, Pa. Harry H. Bachman, Auct.

SAT. AUG. 20 - 9AM, Holstein Dairy Heifers, Field Crops & Farm Implements. Located Midway Between Fivepointville & Bowmansville, Brecknock Twnshp., Lanc. Co., Pa. Directions: From Bowmansville 625 South, Turn Right On Pleasant Valley Rd., Turn Left On Long Lane Rd. From Fivepointville, Take Rt. 897 South. At Goode Mill Turn Left On Long Lane Rd. Terms By, Henry & Sarah Leid. LeRoy S. Horst & Paul W. Horst, Auct.

PIGS

STATE GRADED SALE
FRI.,
APRIL 1, 1994
1:30 P.M.
AT
WESTMINSTER
LIVESTOCK AUCTION
Westminster, MD
Phone
(410) 848-9820

EQUIPMENT AUCTION

MEAT
PROCESSING
PLANT
FRI.
APRIL 15th
Call For Brochures
R.C. BURKHEIMER
& ASSOC.
Auctioneers
1-800-233-4169

CHESTER COUNTY 4-H CENTER FUND-RAISING DAIRY SALE

Saturday, April 2 11:00 A.M.

Solanco Fairgrounds, Quarryville

40 Registered and Grade Holsteins, Ayrshires, and Jerseys; bred heifers, calves, semen, and dairy-related items.

FEATURES SELLING

CURIOUS BRED HEIFER, due in June to Tesk; Dam has three records over 21,000; second dam over 29,000; third dam over 34,000

STARBUCK BRED HEIFER due in the Spring; dam has 22,800, 3.9%, second dam 2E-91 with 160,000 lifetime.

AYRSHIRE SHOW CALF born in December; sired by Maple-Dell J R; dam VG-87 with 20,500, 4.1% fat, 3.6% protein; second dam VG-87; third dam VG-89.

JERSEY SHOW CALF born March '94; dam a two-year old, winner at numerous Pa. fairs; second dam 86 pts; from a deep, show-winning pedigree.

LINEBACK CALF born March '94; Sired by Rocky; Dam at two years has 11,500 4.0% fat.

From the DUNWOOD GOLDEN FAMILY, a March show-age calf sired by CRACIN ROYAL from a GP-83 BLACKSTAR with 22,300.

Nine month old SKYBUCK from a GP-83 dam with 23,600.

September ASTRE STARBUCK from a two-year old LEADMAN; second dam by SECRET with 23,500, 3.4% protein.

November ELVIN from a two-year old BLACKSTAR with an M.E. of 26,700; second dam by SECRET.

November BELL JOY from a REX with 22,300.

December SHOW-AGE CALVES sell sired by CUBBY, MASCOT, and SWD MARK from high producing pedigrees.

More from top sires such as LEADMAN, MANAGER, WISTER, RAMBO and BATMAN.

BULL CALF SELLING

TESK SON from a VG-88 Valiant with 32,000 milk, born Sept. '93.

SEMEN SELLING

Over 80 units sell including; Slocum, Aerostar, Oscar, Cracin Royal, Luke, Flip, Mark Adam, and Fond Reliance; Also services to Mascot, Leadman, and Belltone.

DAIRY-RELATED ITEMS SELLING

Calf Starter, Milk Replacer, Teat Dip, and Barn-Dri.

For catalogs, call or write:

Tom Barlow
R.D. 2, Box 46-A,
Cochranville, PA 19330
Phone: 610-932-5274

All cattle and items for this sale have been donated, and all proceeds go toward the building of the Chester County 4-H Center.

PUBLIC AUCTION

OF REAL ESTATE

(Nice 12-Acre Farmette),

Farm & Lawn/Equip., Power & Hand Tools, Housegoods & Furn.

SAT., APR. 23, 1994

@ 9:00 A.M.

Loc.: 1680 Robert Fulton Hwy., East Drumore Twp., Lancaster Co., PA. (Approx. 5 mi. S. of Quarryville along Rte. 222).

R.E.: Open house: Sat., Apr. 2 from 1 to Noon. 10% down. Settle 40 days. R.E. sold @ 1:00 P.M.

Sale By:

JOSEPH H. AND
ROBERTA L. SCHNEIDER

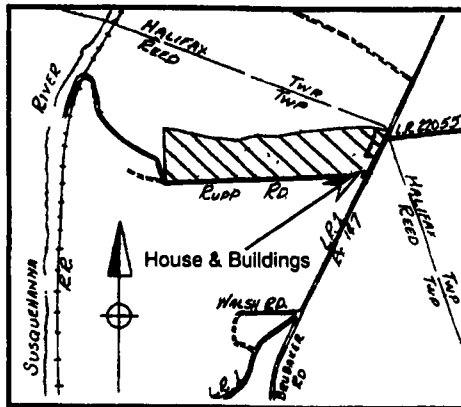
CHARLES FOLTZ HERR, Attorney
ROY & ERIC PROBST, Aucts.
AU000730L, Ph. (717) 464-3190

PUBLIC AUCTION



Saturday, April 30, 1994
At 9:00 A.M.

Located approximately 4 miles north of Clarks Ferry Bridge along Route 147, Reed Township, Dauphin County. Only 12 miles from Harrisburg.



REAL ESTATE

37 ACRE GENTLEMAN'S FARM IN BEAUTIFUL POWELLS VALLEY

Real Estate will be offered at 1:00 P.M.

• 1 1/2 Story Brick Bungalow With Wrap Around Cemented Porch • 1st Floor - Kitchen, Living, Dining (2) Bedrooms & Full Bath; • 2nd Floor - Large Bedroom, Lots of Storage Space; • New Roof & Spouting, New 200 Amp Service; • New Oil Hot Water Baseboard Heat (Ener Royal Boiler); • New Septic System, Drilled Well; • Outbuildings - 30'x30' Cinder Block Garage/Workshop, Cinder Block One-Story Barn, Storage Shed; • Land - 37 Acres, Approx. 21 acres tillable, Balance Woodland. 2,600' Hard Road Frontage on Rupp Road, Road Frontage on Route 147.

TERMS: 10% Down, Balance 60 Days. Additional terms Day of Sale. For inspection Call 896-8406 or 896-8620.

CAR & TRUCK

YARD & FARM MACHINERY,
HORSE DRAWN EQUIPMENT

MECHANICAL, POWER,

GARDEN, HAND

MACHINERY & TOOLS

ANTIQUÉ FURNITURE &

COLLECTIBLES

GLASSWARE, DISHES

& CHINA

HOUSEHOLD GOODS

AUCTIONEER'S NOTE: Auctioneers will split and sell at two locations at same time beginning at 10:00 A.M.

TERMS: Cash or approved PA check by Auctioneer.

Estate of:

HARRY & ARLENE PECK

Executrix: Carolyn A. Foerster

Executor: Robert H. Peck

Attorney: Allen Shaffer

Auctioneers:

David Deibler 896-8530 AU001213-L

Ed Shoop 896-8305 AU000A42-L

37 Sycamore Ave., Halifax, PA 17032

Lunch Stand Reserved

PUBLIC AUCTION

OF REAL ESTATE

(± Farmette w/2 Dwellings)
Farm Mach./Equip. & Tools,
Butchering Tools, Antiques &
Collectibles

SAT., APR. 30, 1994

@ 9:00 A.M.

Loc.: 1147 Scalpy Hollow Rd., Drumore Twp., Lancaster Co., PA. (Dir.: Rte. 272 South of Lancaster approx. 13 miles, 1/2 ml. West on Oregon Hollow Rd., veer left to auction.)

REAL ESTATE: 2 1/2-story frame house w/2-story add., mod. kitch., eat-in din area, liv. rm. w/lot windows. 2nd Fl. w/1 bath + 4 bedrms w/hdwd. firs. Full day-light basement w/hot water htr., well pump, wash area, 1/2 bath. Septic & well sys. Propane gas space heating. Includes 3 or 4 util. outldgs.

TENANT HOUSE: 2-story w/1-story add., w/3 rooms 1st floor, lg. bdrm. & bath 2nd fl. Separate well & septic. Parcel of land lies along both sides of Scalpy Hollow Rd. Lg. percent tillable. Pasture land w/stream.

Open House Dates: Sat., Mar. 26 and April 9, 10 to 12 Noon. 10% down. Settle in 60 days. R.E. to be sold at 1:00 P.M.

Food served. No out of state checks

Sale by:

MRS. ELIAS (REBECCA W.) MILLER

DAVID HOMSHER, Attorney

ROY & ERIC PROBST, Aucts.

AU000730L, Ph. (717) 464-3190

PUBLIC AUCTION

3.2 ACRE FARMETTE WITH
STONE HOUSE
HOUSEHOLD GOODS • FARM
EQUIPMENT • TOOLS

MON., APRIL 11, 1994
4:00 PM

LOCATED: West of York, PA. 4 Miles
Along Rt. 234 • East Berlin Rd. • On Left.

6:00 PM REAL ESTATE

3.2 Acres in Jackson Township, York Co. improved with a 2 story stone house, frame barn with steel siding and 2 car pole building. House has kitchen, dining room, living room, bath and closed-in porch on the 1st floor, 3 bedrooms on the 2nd floor. Cement basement, oil hot air heat and wood stove, all replacement windows and carpet in bedrooms. 231' Road frontage on Rt. 234, fenced in fields.

TERMS: 10% DOWN DAY OF SALE,
BALANCE IN 60 DAYS.
SHOWN BY APPOINTMENT • PHONE
(717) 792-2528

4:00 PM FARM EQUIPMENT • HOUSEHOLD GOODS • TOOLS

Massey Ferguson 135 Gas, 3 Cylinder with 600 hours, 3 pt. Power steering • Purchased New; M.F. 2x16 Trip Back Plow, 3 pt. 2 Row Culti., Black Hawk 2 Row Corn Planter • 3 pt., Drag Disk, Spring Harrow, 2 New Idea 12A Spreaders, Bale Elevator w/Electric Motor, 3 pt. Post Hole Digger, New Holland 68 PTO Baler, Int. 3 pt. Dyna Balancer Mower, Int. Mfg. 5'3 pt. Rotary Mower, 3 pt. 6' Scraper Blade, Co-op Hay Rake, 3 pt. Hitch Arps Snow Blower, Straw Shredder, Echo Weedeater with Brush Head, Home-lite XL903 Chain Saw, New Polan 1800 Chain Saw, Used Polan Chain Saw, 2 Rotary Mowers, Blacksmith Tools, Long Handle Tools, Gas Tank & Pump, Farm Gates, Fencing, Electric Fencer, Tire & Tow Chains, Cable, Horse Culti., Shallow Well Pump, Misc. Lumber, Dog Kennel, Hand Clover Seeder, B&D Hedge Trimmer, Buck Saw, Hudson Sprayer, 2 Man Saw, Stewart Clippers, 3 Western Horse Saddles and Bridles, Misc. Horse Gear, Metal Cattle Rack for Pick-Up, Wrenches and Tools, Etc.

Philco Refrigerator, Admiral Electric Stove, Maytag Wringer Washer, Double Tubs, Kitchen Cabinet, Footlocker, Window Air Conditioner, Kerosene Light, Golf Balls, Hanging Light with red shade & prisms, Misc. Household Goods and other items of interest.

TERMS: CASH OR GOOD CHECK

SELLER:

Elwood L. & Ruth N. Rohrbaugh

R.D. #6, Box 20, York, PA

717-792-2528

AUCTION CONDUCTED BY
Rentzel's Auction Service
Emigsville, PA, PA Lic. # 61
764-6 112