

Greencastle Livestock

Greencastle, Pa.

Report Supplied by Auction
March 21, 1994

SLAUGHTER STEERS: 161 HD. TREND: STEADY TO 1.00 LOWER. HIGH CHOICE AND PRIME 2-4 74.00-75.75; CHOICE 2-3 950-1075 LBS. 69.00-73.50; CHOICE 2-3 1075-1375 LBS. 68.00-74.00; CHOICE 2-3 OVER 1375 LBS. 62.00-68.75; CHOICE 4 ALL WEIGHTS 60.00-66.00; SELECT & CHOICE 1-2 950-1100 LBS. 63.00-69.00; SELECT AND CHOICE 1-2 1100-1375 LBS. 61.00-67.00; SELECT AND CHOICE 1-2 OVER 1375 LBS. 59.00-64.50.

HOLSTEINS: CHOICE 2-3 1050-1450 LBS. 61.50-65.50; SELECT 1-2 1050-1450 LBS. 55.00-61.00.

SLAUGHTER HEIFERS: 82 HEAD, TREND STEADY TO 1.00 LOWER. CHOICE 2-3 850-1000 LBS. 64.00-70.50; CHOICE 2-3 1000-1250 LBS. 68.00-74.00; CHOICE 4, ALL WEIGHTS 60.00-64.00; SELECT AND CHOICE 1-2 850-1000 LBS. 57.00-65.00; SELECT AND CHOICE 1-2 1000-1250 LBS. 59.00-67.00.

HOLSTEINS: CHOICE 2-3 1000-1350 LBS. 57.00-63.50; SELECT & CHOICE 1-2 1000-1350 LBS. 50.00-56.00.

SLAUGHTER BULLS: 34 HEAD,

TREND STEADY TO 2.00 LOWER. YIELD GRADE 1 ALL WEIGHTS 60.00-68.75; YIELD GRADE 2 ALL WEIGHTS 54.00-60.00.

BULLOCKS: 6 HEAD. CHOICE 1-3 950-1150 LBS., NONE; CHOICE 1-3 1150-1375 LBS. 60.00-62.00; SELECT 1-2 950-1250 LBS. 65.00-71.00.

COWS: 387 HEAD. TREND STEADY TO WEAKER. BREAKING UTILITY & COMMERCIAL 43.00-49.00; CUTTER & BONING UTILITY 44.00-51.00; CANNER & LOW CUTTER 44.00 & DOWN.

STOCKER & FEEDER CATTLE RECEIPTS: 160 HD, WEAKER TREND. BEEF TYPES, STEERS 200-400 LBS. 86.00-110.00, BULLS 80.00-105.00, HEIFERS 76.00-94.00; 400-600 LBS. STEERS 80.00-95.00, BULLS 70.00-87.00, HEIFERS 70.00-83.00; 600-800 LBS. STEERS 70.00-81.50, BULLS 65.00-69.00, HEIFERS 68.00-76.00; 800-975 LBS. STEERS 65.00-70.00, BULLS 57.00-62.00, HEIFERS 60.00-67.00.

HOLSTEINS AND DAIRY CROSS, STEERS 200-400 LBS. 72.00-80.00, BULLS 68.00-75.00, HEIFERS, NONE; 400-600 LB. STEERS 65.00-71.00, BULLS 60.00-64.00, HEIFERS, NONE; 600-800 LB. STEERS 60.00-64.00, BULLS 50.00-57.00, HEIFERS, NONE; 800-975 LB. STEERS 50.00-59.00, BULLS 45.00-53.00, HEIFERS, NONE.

CALVES: 496 HEAD, STEADY

TREND. CHOICE, 150-300 LBS. 90.00-109.00; GOOD 150-300 LBS. 85.00-100.00; GOOD, 100-150 LBS. 70.00-90.00; GOOD 80-100 LBS. 60.00-75.00; STANDARD 80-100 LBS. 50.00-65.00; STANDARD, 80 LBS., AND DOWN, 50.00 AND DOWN.

CALVES RETURNING TO THE FARM: STEADY. HOLSTEIN BULLS, OVER 100 LBS., UP TO 133.00, UNDER 100 LBS., UP TO 128.00; HOLSTEIN HEIFERS, OVER 100 LBS., UP TO 240.00, UNDER 100 LBS., UP TO 220.00; BEEF TYPE BULLS, OVER 90 LBS., UP TO 185.00; BEEF TYPE HEIFERS, OVER 90 LBS., UP TO 170.00.

SHEEP AND LAMBS: 141 HEAD, STEADY. CHOICE, 80-100 LBS., 68.00-79.50; 100-120 LBS., 56.00-65.00; 120 AND OVER 42.00-52.00; LIGHT LAMBS 80.00-119.00.

SHEEP: EWES, LEAN 31.00-37.50; EWES, FAT 24.00-30.00; YEARLINGS 39.00-44.00; BUCKS 21.00-26.00.

GOATS: 119 HD., SMALL 20.00-39.00; MEDIUM 35.00-50.00; LARGE 51.00-110.00.

HOGS, SOWS & BOARS: 119 HEAD, TREND 2.00 LOWER. HOGS, BARROWS & GILTS: 210-250 LBS. 41.00-43.00; 250-260 LBS. 41.00-42.00; 260-270 LBS. 40.00-40.50; 270-300 LBS. 37.00-40.00.

LIGHT HOGS: 140-180 LBS. 30.00-34.00; 180-210 LBS. 32.00-39.00.

Lancaster Farming, Saturday, March 26, 1994-A13

SOWS: STEADY. GOOD SOWS UNDER 400 LBS. 33.00-39.00; GOOD SOWS OVER 400 LBS. 37.00-43.00; CULL SOWS, ALL WEIGHTS 33.00 AND DOWN.

BOARS: TREND STEADY. 180-210 LBS. 29.00-31.00; 210-260 LBS. 31.00-35.00; 260-300 LBS. 30.00-31.00; 300 LBS. AND OVER 30.00.

SALE EVERY MONDAY AT 2:00 P.M. & EVERY THURSDAY AT 1:00 P.M.

HAY & STRAW SALE EVERY MONDAY & THURSDAY AT 11:30 A.M. SPECIAL FEEDER CATTLE SALE: FRIDAY, APRIL 1, 1994, AT 7:15 P.M. SPECIAL FEEDER PIG SALE: SATURDAY, MARCH 26, 1994, AT 1:00 P.M.

SPECIAL EASTER LAMB AND GOAT SALE MARCH 24 AT 6:30 P.M.; SPECIAL BROOD COW SALE APRIL 15 AT 7:15 P.M.

Morrison Cove Livestock Auction

Martinsburg, Pa.

Monday, March 21, 1994

Report Supplied by Auction

CATTLE: 222. STEERS: CHOICE 71.00-74.10, GOOD 69.00-70.75. HEIF-

ERS: CHOICE 70.50-73.00, GOOD 68.00-70.00, COWS: UTILITY & COMMERCIAL 44.50-50.00; CANNER AND LOW CUTTER 37.50-44.75.

BULLOCKS: GOOD & CHOICE 60.00-63.00.

BULLS: YIELD GRADE NO. 1 57.00-63.00.

FEEDER CATTLE: STEERS 66.00-89.00, BULLS 63.00-78.00, HEIFERS 60.00-75.00.

CALVES: 180. PRIME NO MARKET TEST, CHOICE 99.00-107.00, GOOD 90.00-97.00, STANDARD 40.00-60.00, HOLSTEIN BULLS 90-130 LBS. 115.00-125.00, HOLSTEIN HEIFERS 90-130 LBS. 140.00-200.00.

HOGS: 92. US NO. 1-2 42.50-44.00, US NO. 1-3 41.50-42.50.

SOWS: US NO. 1-3 32.50-40.00.

BOARS 29.00-32.00.

FEEDER PIGS: 42 HEAD. US#1-3 20-50 LBS. 17.00-29.00.

SHEEP: 180. CHOICE LAMBS 80.00-135.00, GOOD LAMBS 70.00-79.00, SLAUGHTER EWES 18.00-29.00.

GOATS 21.00-70.00.

53 LOADS OF HAY. ALFALFA 83.00-125.00; TIMOTHY 50.00-85.00; 13 LOADS OF STRAW, 75.00-114.00; 3 LOADS OF FIREWOOD, 34.00-56.00.

TRI COUNTY

SALES SERVICE
QUALITY
INSTALLATION

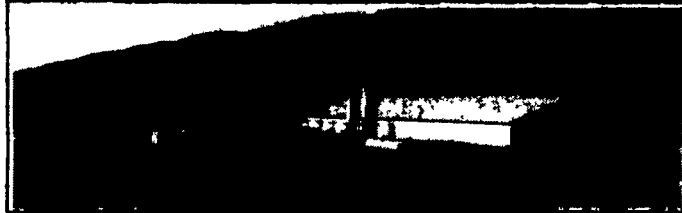
Confinement Systems, Inc.

SWINE CONFINEMENT EQUIPMENT and FACILITIES LEADER



NEW FOR 94

Tri-County "DUTCH CRATE" Pig Saver with Complex New Sow Feeder and Head Gate

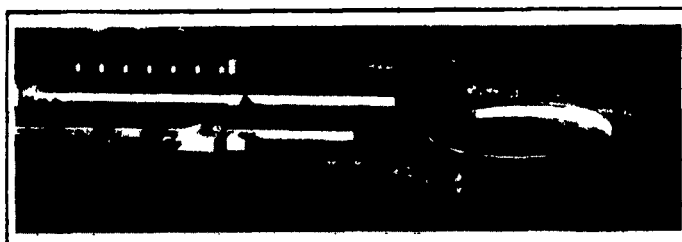


300 Sow Farrow - Feeder Pig Unit

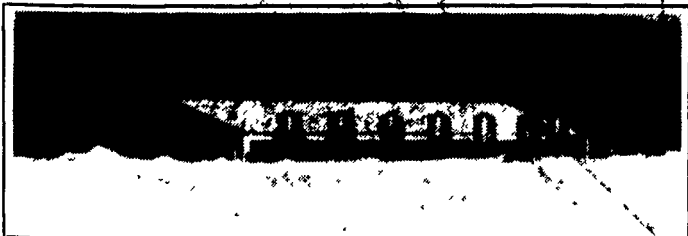


CONFINEMENT STALLS

Developed recently in our R&D farm. Our goals were convenience, safety and durability. The low back and flat top rails are easy to reach over with no sharp edges. Stainless steel rear legs and front feet along with solid steel horizontal rods through punched uprights provide the strongest, most durable stall ever produced by Tri-County (21"-24" O.C. x 86")



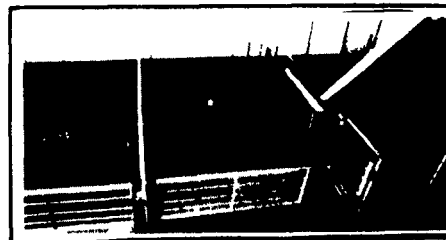
1200 Sow Farrow-Feeder Pig Unit



2800 HP Offsite Nursery (7 Rooms)
(Pull Plug, Preferred Ceiling Ventilated)

NURSERY PENNING

Nursery penning has been improved by the use of an optional solid stainless steel panel on the front gates which keeps walkways clean. Stainless steel verticals on penning eliminate corrosion where penning attaches to the floor. Stainless steel drinker pipes & mounting brackets also increase durability.



FINISHING PENNING

Optional stainless steel verticals and fasteners offer improved durability over other similar types of penning. Loop and flapper latch arrangement eliminates the use of drop pins. Stainless steel fence line feeders provide excellent durability and a minimum of waste.



2000 Head Finisher (2 Rooms)
(Deep Pit, Tunnel Ventilated)

Let Our Experienced Staff Assist In Planning A Successful Facility For You

TRI-COUNTY

CONFINEMENT SYSTEMS INC.

608 E. Evergreen Rd., Lebanon, PA 17042

Ph. 717-274-3488

HOURS:
Mon.-Fri.
7:00 to 4:30;
Sat.
8:00 to 12:00



Natchez Animal Supply

Low Prices

Eqvalan Horse Wormer
(Ivermectin paste 1.87%)
\$9.19 per Tube

• VACCINE • ANTIBIOTICS
• WORMERS • VITAMINS
• INSECTICIDES

PRODUCTS FOR

CATTLE...DOG...CAT...HORSE...SWINE

★ Request ★
New Catalog

P.O. Box 1528V • Natchez, MS 39121
1-800-647-8760
2nd Day and next day air available

Authorized Parts & Service

Kubota

Industrial Diesel Engines
Check Our Prices on New and Used Parts

YANMAR Diesel Engines

Mitsubishi - Satoh Compact Diesel Tractors

Specializing In Complete Service For Skid Loaders and Most Types Of Small Diesel Powered Equipment.

Dismantling For Parts NH L553 Skid Loader Yanmar 155 Tractor

GD Equipment

385 W. Metzler Rd
Ephrata PA 17522

717-859-3533