

Huntingdon Equipment

Rentals Available

GOOD USED EQUIPMENT

Huntingdon Valley, PA

215-672-9667 • 1-800-543-3833

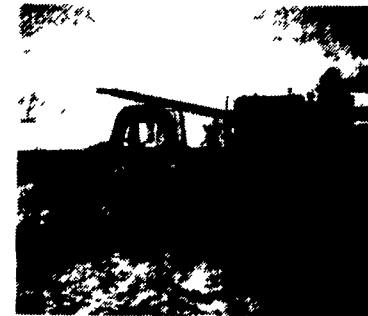
Eddie



One Of Two 1987 Ford F-350, 460 Eng, 4 Spd., Great For Pulling Trailers



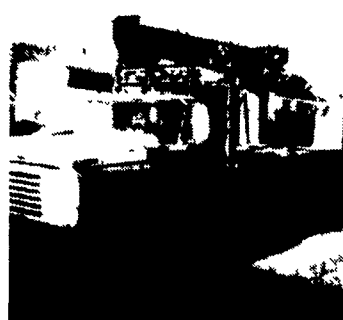
Dump Truck 71 GMC Fleet Maintain with All Service Records, V8, Auto, Insp. & Job Ready.



International Presser Digger This Unit Is Ready To Work, Priced For Quick Sale \$9,500 \$8,500



Holan 70' Double Bucket 75' working height mounted on 1981 Western Standard, 6x6 Flatbed, CAT 3208, Auto.



Need a Lift? We Have A Large Selection Of Boom Trucks Up To 14,000 lbs. Cap. Some With Post Diggers.



Bucket Trucks 28' to 65' Gas and Diesel. Call For Details.

DIGGER DERRICKS/AERIAL BUCKETS/UTILITY EQUIPMENT

Fleet Maintained Tandem Axle Truck Tractors



1980 R686ST - 300 Eng, Extended Range Transmission, Recent Eng. Overhaul - With A Wet Line, Clean Dependable Equipment \$14,500 Other T.A. Conventinals Available Soon! CALL DAVID YERGER FOR DETAILS 717-733-6556 L.R. Summers Inc.

REEDMAN AUTO MALL LEASING 2100 CARS-TRUCKS

* All Cars Below Equipped With Auto Trans, Air Cond, PB, PS, & Stereo.

* '94 NEW JAG XJ6 LUX PKG \$499.00 Per Month For 24 Months. Closed End Lease. Stock #92014 & Cyl VIN RC689717 MSRP * \$54,687 Total Of Monthly Payments \$11,976 With \$2350 Down 15* Per Mile Over 30,000.

* '94 NEW CORVETTE CPE \$399.00 Per Month For 24 Months. Closed End Lease Stock #15007 & Cyl VIN R5100300 MSRP * \$39,419 Total Of Monthly Payments \$8576 With \$3000 Down

* '94 NEW LINC MARK VIII \$392.00 Per Month For 24 Months. Closed End Lease. Stock #98528 & Cyl VIN RY640979 MSRP * \$38,775 Total Of Monthly Payments \$9408 With \$2200 Down 11* Per Mile Over 30,000

* '94 NEW LINCOLN TOWN CAR \$364.00 Per Month For 24 Months. Closed End Lease. Stock #98163 & Cyl VIN RY685208 MSRP * \$35,475 Total Of Monthly Payments \$8736 With \$2200 Down 11* Per Mile Over 30,000 Miles

* '94 NEW LINC CONTINENTAL \$377.00 Per Month For 24 Months. Closed End Lease. Stock #99072 & Cyl VIN RY642636 MSRP * \$34,765 Total Of Mthly Payments \$9048 With \$2200 Down 11* Per Mile Over 30,000 Miles

* '94 NEW CHEV CAMARO \$236.00 Per Month For 36 Months. Closed End Lease. Stock #40088 & Cyl VIN R2107071 MSRP * \$17,427 Total Of Mthly Payments \$8498. With \$2000 Down

* '94 NEW CHRYS LHS \$329.00 Per Month For 24 Months. Closed End Lease. Stock #53071 & Cyl VIN RH113400 MSRP * \$30,178 Total Of Monthly Payments \$7696 With \$2500 Down.

* '94 NEW CHRYS CONCORDE \$283.00 Per Mth For 36 Months. Closed End Lease. Stk #58142 & Cyl VIN RH203381 MSRP * \$22,377 Total Of Mthly Pymts \$10,188 With \$2000 Down

* '94 NEW MERC GRAND MARQUIS GS \$315.00 Per Month For 24 Months. Closed End Lease. Stock #91081 & Cyl VIN RX613148 MSRP * \$21,045 Total Of Mthly Payments \$7560 With \$2500 Down 11* Per Mile Over 30,000

* '94 NEW MERC SABLE GS \$229.00 Per Month For 24 Months. Closed End Lease. Stock #94559 & Cyl VIN RA610080 MSRP * \$19,230 Total Of Monthly Payments \$5496 With \$2000 Down 11* Per Mile Over 30,000 Miles

SHOP REEDMAN BEFORE YOU BUY LEASE OR RE-LEASE A CAR OR TRUCK

FLASH! If You Still Have Payments On Your Present Leased Car Or Truck We Would Like To Bid On Your Lease For A New Vehicle, Individual Lease, Or Company Leasing.

* '94 NEW CHRYS TOWN & COUNTRY \$342.00 Per Month For 36 Months. Closed End Lease. Stock #77025 & Cyl VIN RX142344 MSRP * \$28,014 Total Of Mthly Payments \$12,312 With \$2500 Down

* '94 NEW PLY VOYAGER \$212.00 Per Month For 36 Months. Closed End Lease. Stock #8088 & Cyl VIN RB27947 MSRP * \$17,319 Total Of Monthly Payments \$7632 With \$1500 Down

* '94 NEW CHEV S-10 PICKUP 4x4 1/2 Ton \$279.00 Per Month For 24 Months. Closed End Lease Stk #T-5303 & Cyl VIN RK130481 MSRP * \$18,260 Total Of Mthly Pymts \$6896 With \$2000 Down

* '94 NEW DODGE 2500 Reg P/U \$225.00 Per Month For 36 Months. Closed End Lease Stk #T-9808 & Cyl VIN R9648145 MSRP * \$19,678 Total Of Mthly Pymts \$8100 With \$2500 Down

* '94 NEW LUMINA 4 Dr \$225.00 Per Month For 36 Months. Closed End Lease Stk #35106 & Cyl VIN R1107433 MSRP * \$16,455 Total Of Mthly Pymts \$8100 With \$1500 Down

* '94 NEW DODGE STEALTH \$334.00 Per Month For 24 Months. Closed End Lease Stk #6012 & Cyl VIN RY003694 MSRP * \$24,522 Total Of Mthly Pymts \$8016 With \$2800 Down

* '94 NEW CHEV CAVALIER RS 4 Dr \$198.00 Per Month For 36 Months. Closed End Lease Stk #45177 & Cyl VIN R7170199 MSRP * \$12,100 Total Of Mthly Pymts \$7128 With \$1200 Down

Closed End Leases

First Monthly Payment Plus A Security Deposit Equal To One Monthly Payment Is Required Upon Delivery. Lessee May Have The Option To Purchase The Car At Lease End At A Price To Be Negotiated With The Dealer At Lease Inception. At The End Of The Lease If You Do Not Exercise Your Option To Buy You Will Pay A Mileage Charge Of 10* Per Mile For Each Mile In Excess Of 15,000 Miles Per Year Plus The Costs Of Any Excess Wear Or Tear.

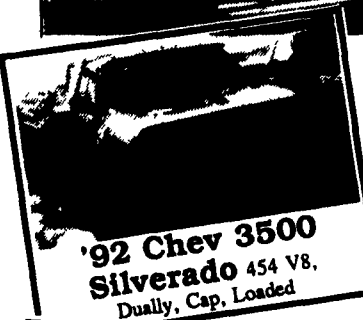
* Price Includes All Cost To Be Paid By A Consumer, Except For Licensing Costs, Registration Fees & Taxes.

Ask For Reedman Leasing. CALL 1-800-919-8200 Reedman Rte 1 Langhorne Pa.

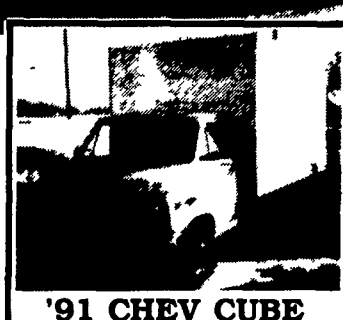


Frederick

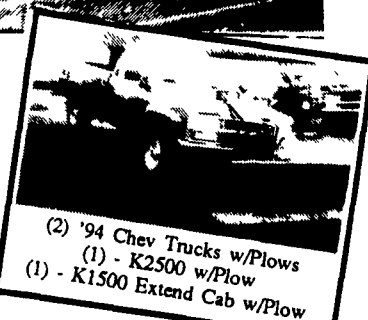
THE TRUCK PLACE



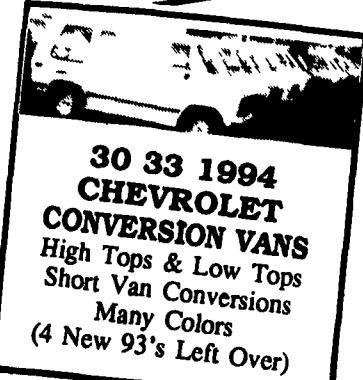
'92 Chev 3500 Silverado 454 V8, Dually, Cap. Loaded



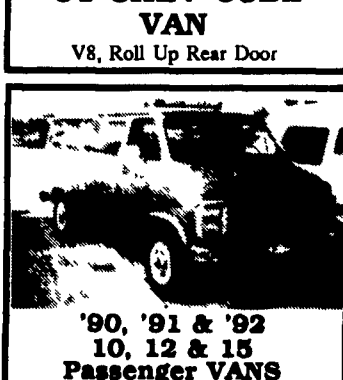
'91 CHEV CUBE VAN V8, Roll Up Rear Door



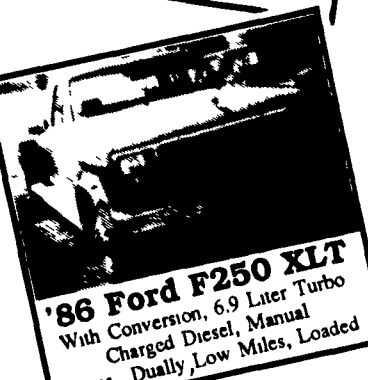
(2) '94 Chev Trucks w/Plows (1) - K2500 w/Plow (1) - K1500 Extend Cab w/Plow



30 33 1994 CHEVROLET CONVERSION VANS High Tops & Low Tops Short Van Conversions Many Colors (4 New 93's Left Over)



'90, '91 & '92 10, 12 & 15 Passenger VANS Low Miles



'86 Ford F250 XLT With Conversion, 6.9 Liter Turbo Charged Diesel, Manual Trans., Dually, Low Miles, Loaded

IF WE DON'T HAVE IT, WE'LL GET IT!

Frederick The SUPERMARKET OF TRUCKS

1505 Quentlin Rd. Rt. 72 - Lebanon SALES HOURS: Mon.-Fri. 9-9 Sat. 9-5

Truck Office - 717-270-2656

(717) 274-1461 • PA (800) 222-5523

Truck Specialists • Barb Keefer • Bill Breault • Bryon Bernhard