

KEIM

YOUR CHEVY  GEO FAMILY

(717) 768-8225
(800) 223-KEIM

RT. 30 Lincoln Highway East
Paradise, PA 17562

YOUR TRUCK, VAN & 4x4
HEADQUARTERS
IN LANCASTER, BERKS AND
CHESTER COUNTIES

1-800-223-KEIM

\$500 OFF A PRE-SEASON INVENTORY REDUCTION SALE IN PARADISE



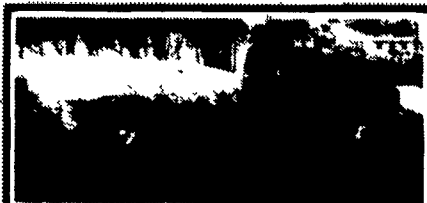
**1988 CHEV 454 V8
EXT. CAB DUALY**
Only 56,000 Miles, Still Under Factory Warranty - Automatic, Air, Tilt, CC, PW, PDL, AM/FM Cass. - Ready For Years of Hard Work



**1986 FORD F-350
CREW CAB DUALY**
Diesel, AT, AC, Only 72,000 Miles, Beautiful Tow Vehicle For The Months Ahead.



**1987 CHEVY CREW CAB
DUALY**
454 V8, Southern Coach Conversion Auto, Air, Tilt, CC, PW, PDL, AM/FM Sharp Truck, Excellent Condition - Ready To Go To Work



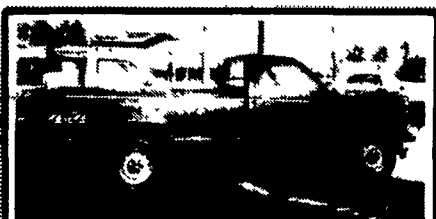
**1985 FORD CAB &
CHASSIS**
Only 65,000 Miles, Automatic, Completely Redone, Excellent Condition, Buy It As Is or We Will Put A Dump Or Stakebody On It For You



**1993 GMC 3500
VANDURA**
Automatic, Air Conditioned, 10,000 GVW, Only 12,000 Miles, Save Over \$6000 Off New. Stop and See Our New And Used Commercial Vehicles.



**1987 CHEV
SILVERADO 4x4**
Auto & Air, Excellent Condition, Years of Service Still Ahead



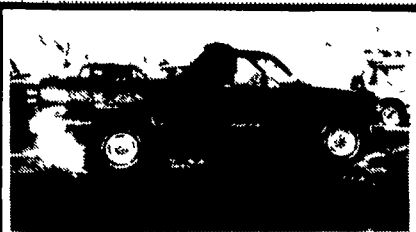
**1990 CHEV DIESEL
4x4 SILVERADO**
Auto, AC, Tilt, CC, PW, PDL, AM/FM, A Rare Combination - Only 55,000 Miles



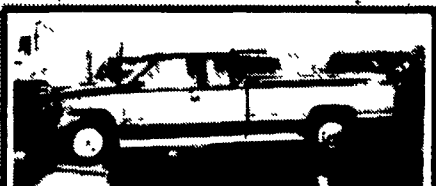
**1992 CHEV
SILVERADO 4x4**
Only 26,000 Miles, Air, Tilt, CC, Showroom Condition, Ready For All Seasons



**1990 CHEV
3/4 TON 4x4 SILVERADO**
Auto, Air, Tilt, CC, PDL, PW, Cass Only 38,000 Miles, Double Batteries & Trans. Cooler, None Nicer Anywhere



**THE WORK TRUCK
THIS 1992 CHEV 454**
V8 Has The Silverado Package, Auto, Air, Tilt, CC, PW, PDL, Cass - A Powerful Work Vehicle That Still Allows The Driver Some Comfort - Only 20,000 Miles.



**1990 CHEV EXT CAB
4x4**
Long Bed, Extra Clean, Auto, Air, Tilt, CC, PDL, PW, Cass. - Hard To Find - But Here For You NOW



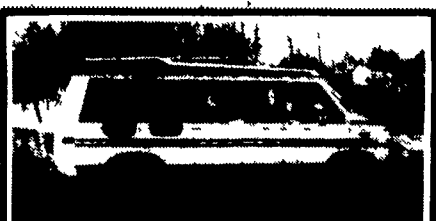
**1991 CHEV SUBURBAN
4x4 SILVERADO**
Only 37,000 Miles On This Auto, Dual AC, Tilt, Cruise, PDL, PW, Cass., Quad Shocks, Skid Plate, Positraction With Trans & Oil Cooler One Owner - Super, Super, Super Nice -



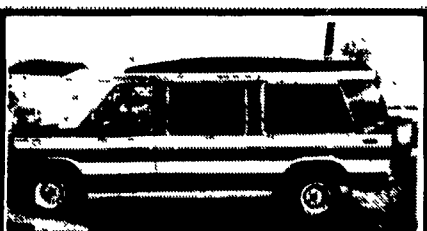
**1988 GMC JIMMY
4x4**
With Only 40,000 Miles - 350, V8, Auto, AC, Tilt, CC, PW, PDL., Cass., This One Will Not Last!



1993 GMC VAN
13,000 Miles, Auto, AC, Save \$4000.00 Off New



**1991 CHEV HI-TOP
CONV VAN**
Only 31,000 Miles On This Sharp Van, Fully Loaded Including TV and VCR



**1988 FORD HI-TOP
CONV VAN**
Fully Loaded, Only 55,000 Miles, Includes TV and VCR



1993 GMC
All Wheel Drive - Only 21,000 Miles, Absolutely Perfect, Ready For All Seasons