

Top Lancaster DHIA Cows By Protein For February

(Continued from Page C2)

EUGENE & SUSAN HESS								
COOKIE	RH	4-0	305	29,521	2.9	856	3.2	953
CARLA	GR-H	3-2	305	26,998	2.9	794	3.5	945
PHILIP G CROUSE								
GRETEL	RH	8-4	305	28,631	3.0	850	3.0	846
NAOMI	RH	5-4	305	26,225	3.1	800	3.6	951
SHELMAR ACRES								
MAXINE	RH	3-3	305	29,318	2.9	847	2.5	742
WILMA6	RH	7-7	305	26,360	3.1	813	3.7	972
MARGE2	RH	6-8	305	25,582	3.0	771	3.6	917
NEVIN S HORNING								
DACRON	GR-H	4-3	305	27,497	3.1	842	3.1	859
JAMES E OBERHOLTZER								
43	GR-H	2-11.	305	25,845	3.3	842	3.1	793
ELAN P KAUFFMAN JR								
CHAMPA	RH	3-7	305	25,199	3.3	841	3.1	790
MARVIN R STOLTZFUS								
HEIDI	RH	3-3	305	24,844	3.4	840	3.1	764
EARL N LANDIS								
SARA	RH	3-0	305	26,335	3.2	833	3.6	960
LOUANN	RH	5-7	305	26,535	3.0	798	3.3	877
TOM BARTMAN								
187	GR-H	4-6	305	25,175	3.3	830	3.2	804
NERVIN S STOLTZFUS								
ROBIN	GR-H	4-2	305	24,913	3.3	830	2.8	691
JOYCE	GR-H	5-1	305	25,223	3.1	781	2.6	665
WEA-LAND FARM								
SISSY	RH	4-2	305	24,581	3.4	830	3.5	866
NELSON + JANE STONER								
20	RH	3-5	305	27,335	3.0	824	2.8	772
JOHN U GLICK								
PEARL	RH	5-0	305	28,236	2.9	824	3.2	905

CURTIS E AKERS								
PRILLY	RH	10-3	305	26,701	3.1	820	3.6	973
NEVIN W MOLT								
56	GR-H	4-0	305	24,457	3.4	820	3.8	925
27	GR-H	4-1	305	24,838	3.1	771	4.0	988
DAVE + JODI FINDLEY								
RUDY	GR-H	4-4	305	27,673	3.0	819	3.3	911
ELMER N HIGH								
13	RH	4-2	305	23,865	3.4	815	3.6	860
WALTER N HURST								
217	GR-H	3-5	305	26,594	3.1	815	3.5	923
EZRA Z HORST								
8	GR-H	4-4	298	23,883	3.4	815	3.5	829
7	GR-H	4-0	305	25,741	3.1	799	2.9	739
LEROY N STOLTZFUS								
KATHRY	RH	4-4	305	26,128	3.1	813	3.1	803
BURNELL W MOLT								
170	RH	4-1	305	26,613	3.1	813	3.9	1026
DAVID & ROBIN DUM								
97	RH	3-2	305	26,201	3.1	813	3.4	878
JOHN J SPEICHER								
33	GR-H	4-2	305	27,956	2.9	812	3.3	926
SUNNY ACRES L								
JOAN	RH	4-6	305	25,301	3.2	811	3.9	987
SAMUEL K LAPP JR								
31	GR-H	5-0	305	24,095	3.4	811	4.3	1031
383	GR-H	5-5	305	26,150	3.0	777	3.2	828

(Turn to Page C4)

YOUR POST FRAME BUILDING HEADQUARTERS

Wickes Lumber is the place to turn for all your packaged building needs. We offer a wide selection of sizes and styles of buildings, perfect for a variety of needs. We also carry a complete assortment of steel for siding and roofing, quality lumber, treated posts, heavy-duty hardware and all the extras. Add delivery and credit plus attentive, knowledgeable

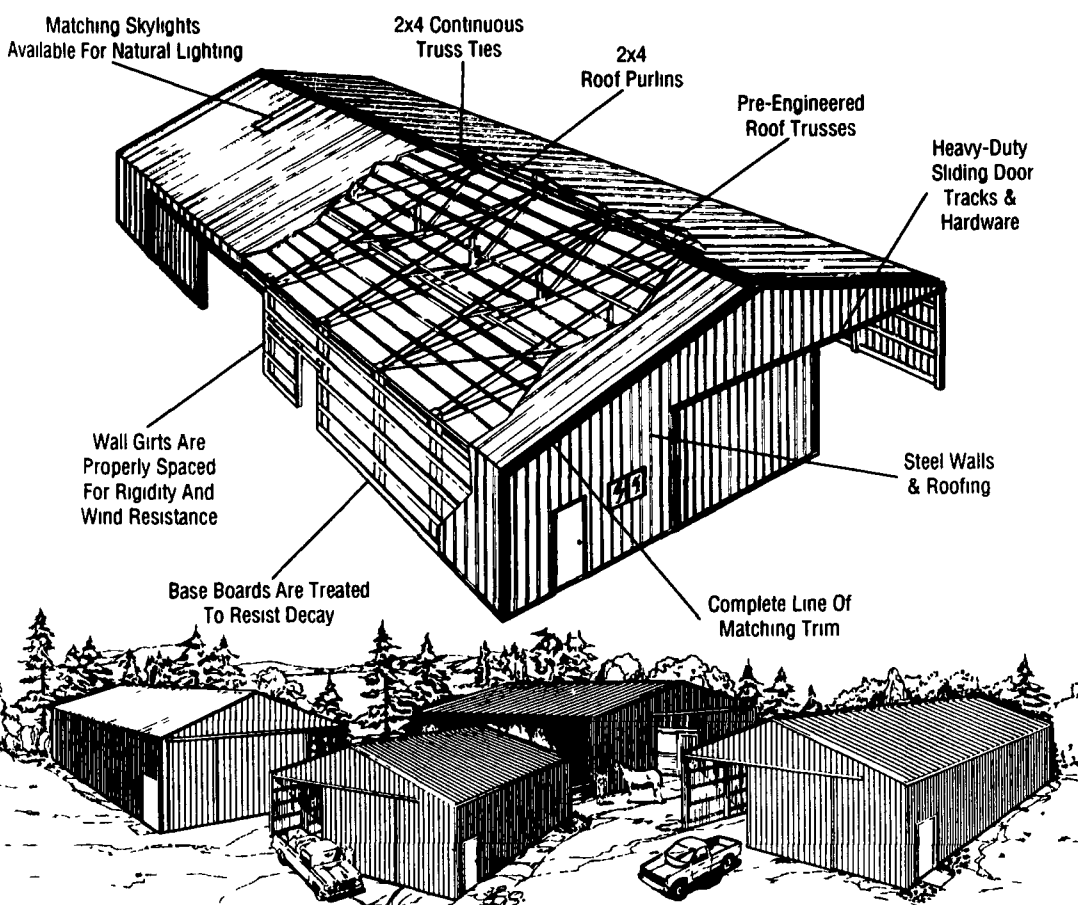
salespeople and you've got it all!

Computer Aided Customizing!

Any of our package designs can be tailored to suit your needs with our Computer Aided Design capabilities. Ask a Wickes Lumber associate for details!

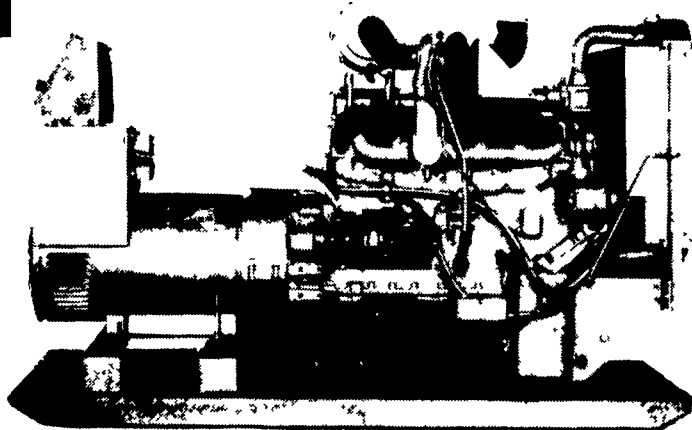


EVERYTHING YOU'LL NEED!



Wickes Lumber

- | | | | | |
|--|--|--|---|---|
| Allentown, PA
681 State Road
(215)967-3181 | Ephrata, PA
82 Garden Spot Rd.
(717)733-6521 | Exton, PA
145 S. Whitford Rd.
(215)363-9550 | Frederick, MD
5219 Urbana Pike
(301)662-4107 | Greensburg, PA
Route 136
(412)527-3531 |
| Harrisburg, PA
451 Amp-Wick Dr.
(717)564-4453 | Phillipsburg, PA
199 Strykers Rd.
(908)859-3600 | Reading, PA
2591 Centre Ave.
(215)921-0606 | Succasunna, NJ
39 Route 10
(201)584-6630 | Swedesboro, NJ
Rt. 322
(609)467-0846 |



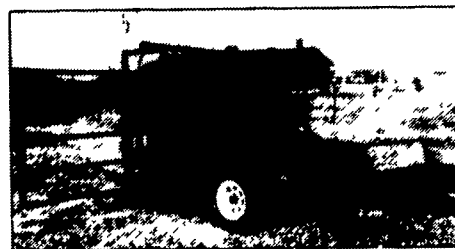
Automatic Systems

- | | |
|--------------------|--------------------------|
| USED | NEW |
| 1 - 15 KW GASOLINE | 1 - 30 KW LP GAS |
| 1 - 15 KW DIESEL | 1 - 60 KW PTO 540 INPUT |
| | 1 - 60 KW PTO 1000 INPUT |

24 HR SERVICE **MAXI-POWER** RADIO DISPATCH

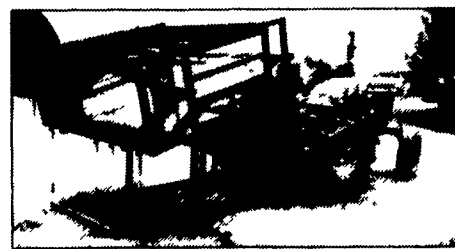
330 Fonderwhite Rd. Lebanon, PA 17042
717-273-4544 1-800-272-MAXI

HEAVY DUTY HOOF TRIMMING TABLES



- 12-year building experience in the tables design
- 2"x2" tube frame chute
- chute measures 75"x28"x 72" high
- 4" casters for cradle fold-up
- Two hydraulic cylinders for extra stability

- 2 10-inch lift belts
- 3500 lb. axle with or without brakes
- tool box for D C pump and battery protection
- manure grate to keep work area clean



- fold away side gate
- removeable head board
- 45 min video from International Hoof Trimming School of Canada

Delivery Available

THREE MODELS TO CHOOSE:
1. PORTABLE 2. STATIONARY 3. 3 POINT HITCH

BERKELMAN'S WELDING
RR 7, AYLMEYER, ONTARIO, CANADA N5H 2R6
(519) 765-4230