

**National
Grain Market**
St. Joseph, Mo.

Wednesday, March 16, 1994

DAILY NATIONAL GRAIN SUMMARY GRAIN AND SOYBEAN PRICES FINISHED MODERATELY HIGHER, WEDNESDAY. WHEAT PRICES WERE BOOSTED BY IMPROVED EXPORT BUSINESS AND CONCERNS OVER DRY CONDITIONS IN THE SOUTHERN PLAINS AREAS. CORN AND SOYBEAN PRICES GAINED SUPPORT FROM SIGNS OF DECREASING SUPPLIES, CONTINUED RAIN DELAYS IN BRAZIL AND LIGHT FARMER SELLING. WHEAT 2 TO 5 CENTS HIGHER EXCEPT MINNEAPOLIS 10 CENTS LOWER. CORN 2 TO 3 CENTS HIGHER. SORGHUM 3 TO 7 CENTS HIGHER. SOYBEANS 3 TO 9 CENTS HIGHER. RECENT DRY CONDITIONS IN SOUTHERN PLAINS AREAS CONCERN TRADERS. EXPORT SALES PICKED UP SLIGHTLY WITH AFRICA AND JAPAN THE MAJOR INTERESTS AND INDICATIONS ARE THAT EGYPT MAY BE SEEKING TO BID FOR 100,000 TO 500,000 TONNES U.S. SUBSIDIZED WHEAT. CORN PRICES TURNED HIGHER AGAIN AS SUPPLIES ARE REPORTED TIGHT. FARMER SELLING IS LIGHTER THIS WEEK. SPILLOVER STRENGTH FROM SOYBEAN PRICES ADDED TO PRICE GAINS. SLOW FARMER SELLING AND ON GOING RAIN DELAYS IN BRAZIL'S BEAN HARVEST PUSHED PRICES UPWARD. IDEAS STOCKS ARE TIGHTENING FOR SOYBEANS AND 1994 PLANTING INTENTIONS COULD COME IN LESS THAN EXPECTED, ALSO ADDED SUPPORT TO PRICES.

EXPORT NEWS: USDA ACCEPTED BIDS TO SELL 60,000 TONNES NORTHERN/DARK NORTHERN SPRING WHEAT TO SUB-SAHARAN AFRICA UNDER EEP FOR APRIL/JUNE SHIPMENT. JAPAN BOUGHT 43,094 TONNES DARK NORTHERN SPRING WHEAT, 14,047 TONNES DURUM, 28,094 TONNES HARD RED WINTER AND 48,094 TONNES WESTERN WHITE WHEAT FOR MAY. USDA ACCEPTED A BID TO SELL 140 TONNES SUNOIL TO MEXICO UNDER THE SUNFLOWER-SEED OIL ASSISTANCE PROGRAM FOR APRIL SHIPMENT.

DATE CHANGE YEAR AGO TRUCK BIDS: 03/16/94 03/15/94 03/17/93 WHEAT: KANSAS CITY 3.57-3.59 UP 2 3.72-3.75 MINNEAPOLIS 4.53 3/4 DN 10 3/4 3.85 3/4 PORTLAND 3.47-3.49 UP 5-4 3.87-3.90 ST. LOUIS 3.34-3.40 UP 5 3.95-3.98.

CORN, U.S. NO. 2 YELLOW: KANSAS CITY 2.87-2.89 UP 2-3 2.22-2.23 MINNEAPOLIS 2.74 1/4 UP 2 2.17 1/4 SO. IOWA 2.85-2.87 UP 3 2.23-2.26 OMAHA 2.73-2.74 UP 2 2.11-2.13.

SOYBEANS, NO. 1 YELLOW: KANSAS CITY 7.05-7.07 UP 5 5.79-5.81 MINNEAPOLIS 6.82 1/2 UP 5 5.76 3/4 SO. IOWA 6.97-6.99 UP 7-6 5.84 C. ILL. PROCESSORS 7.00 1/2-7.04 1/2 UP 9-3 5.83 3/4-5.93 3/4.

*TRUCK BIDS FOR KANSAS CITY, US NO. 1 HARD RED WINTER WHEAT, ORDINARY PROTEIN. MINNEAPOLIS, US NO. 1 DARK NORTHERN SPRING WHEAT, 14% PROTEIN. PORTLAND, NO. 1 SOFT WHITE WHEAT, ST. LOUIS, NO. 2 SOFT RED WINTER WHEAT.

FUTURES CLOSE: KANSAS CITY (MAY) WHEAT 3.39 1/4 UP 2 3.29 MINNEAPOLIS (MAY) WHEAT 3.43 3/4 UP 4 1/4 3.30 3/4 CHICAGO (MAY)

WHEAT 3.42 1/4 UP 5 3.38 (MAY) CORN 2.86 1/4 UP 2 2.23 1/4 (MAY) SOYBEANS 6.94 1/2 UP 5 5.85 3/4.

EXPORT: BARGE OR RAIL, PORT OF NEW ORLEANS OR NORTH TEXAS GULF. NO. 1 HARD RED WINTER WHEAT ORDINARY PROTEIN 3.85 1/4 UP 2 4.07-4.08 NO. 2 SOFT RED WINTER WHEAT 3.69-3.72 UP 4-3 3/4 4.16-4.21 NO.

2 YELLOW CORN 3.05-3.06 UP 2 1/4-2 2.47-2.48 NO. 2 YELLOW SORGHUM RAIL 5.25 UP 3 BARGE 5.25 UP 7 4.31-4.34 NO. 2 YELLOW SOYBEANS 7.22-7.23 UP 5 1/2 6.09-6.10 BIRD.

THIS REPORT A SERVICE OF U.S. DEPARTMENT OF AGRICULTURE, LIVESTOCK AND GRAIN MARKET NEWS, ST. JOSEPH, MISSOURI.

Good's Hay

Leola, Pa.

Wed., March 16, 1994

Report Supplied by Auction
TOTAL LOADS: 166.

ALFALFA: 72.00-152.00.
MIXED HAY: 65.00-147.00.
STRAW: 105.00-190.00.
GRASS: 67.00-125.00.
TIMOTHY: 55.00-165.00.
CORN: 95.00-105.00.
OATS: 2.50 BU.
CLOVER: 87.00.

Feeder Pig Sale

S&J Villari Livestock

Friday, March 11, 1994

757 Head.
30.00-39.00 lbs., 73.00-94.00 cwt.;
40.00-49.00 lbs., 80.00-100.00 cwt.;
50.00-59.00 lbs., 67.00-85.00 cwt.;
60.00-69.00 lbs., 64.00-71.00 cwt.;
70.00-79.00 lbs., 64.00-66.00 cwt.;
80.00-90.00 lbs., 53.00-55.00 cwt.

Hackettstown Poultry & Egg

Hackettstown, N.J.

Report Supplied by Auction

Tuesday, March 15, 1994

Report Supplied by Auction

HEAVY FOWL 40-1.10.
LEGHORN FOWL .30.
MIXED FOWL .70.
BANTAMS EACH 1.00-2.00.
BUNNIES EACH 2.50-8.00.
ROOSTERS 1.00-1.25.
GEESE EACH 3.25.
TURKEYS 1.75 LB.
DUCKS 40-1.10.
RABBITS 1.00-1.75.
PIGEONS EACH 2.25-4.00, BY THE LB. 2.20.
GUINEAS 1.50 LB.
DUCKLINGS 1.25-2.50 LB.

WHITE EGGS: EXTRA LARGE & JUMBO 70-.79; LARGE .66-.73; MEDIUMS .60-.65.
BROWN EGGS: EXTRA LARGE & JUMBO .65-.79; LARGE .61-.66.

Northeast Chicken Parts

Wednesday, March 16, 1994

Buying activity was generally no better than fair. Supplies were in a better balanced position with white meat usually in the longest position. Retail and distributive movement was seasonally light and typical for the holiday period. Trade sentiment was barely steady and cautious.

PRICES PAID PER POUND, ICE PACKED AND CO2 PACKED BROILER/FRYER PARTS, DELIVERED TO FIRST RECEIVERS IN POOL TRUCKLOT AND TRUCKLOT QUANTITIES.

ITEM CURRENT NEGOTIATED TRADING* BREAST - B/S (W & W/O TENDERS) 185-190 BREAST - WITH RIBS 90-91 BREAST - LINE RUN 90 LEGS 46-47 LEG QUARTERS (BULK) 34-35 DRUMSTICKS 44-45 THIGHS

47-48 WINGS (WHOLE) 53-54 BACKS AND NECKS (STRIPPED) 10-12 LIVERS (5 POUND TUBS) 20-25 GIZARDS (HEARTS) 30-35 INCLUDES NEW YORK CITY METROPOLITAN AREA, NORTHERN NEW JERSEY, MASSACHUSETTS, CONNECTICUT, RHODE ISLAND, AND PENNSYLVANIA (NORTHEAST OF HARRISBURG). * TODAY'S NEGOTIATED SALES AS OF 11:30 A.M.

Westminster Hay

Westminster, Md.

Tuesday, March 15, 1994

Report Supplied by Auction

248 LOADS.
ALFALFA: 87.00-160.00, .95-2.60 BALE, LARGE ROUND 14.00-16.00 EACH, 57.00 TON.
TIMOTHY: 65.00-125.00, .80-2.70 BALE., 14.00-17.00 LARGE ROUND.
MIXED HAY: 80.00-120.00, .50-2.20 BALE.
GRASS: 77.00-92.00, .70-2.00 BALE., 16.00-24.00 LARGE ROUND.
CLOVER: 75-1.30 BALE.
STRAW: 107.00-130.00, 1.00-2.20 BALE, 60.00 TON LARGE ROUND.
WOOD: 37.00-65.00 CORD.

Dewart Hay

Dewart, Pa.

Monday, March 14, 1994

Report Supplied by Auction

35 LOADS OF HAY, 88.00-150.00.
STRAW: 7 LOADS, 90.00-118.00.
WOOD: 6 LOADS, 37.00-69.00 LOAD.
CORN: 4 LOADS, 82.00-91.00.
OATS: 1.95 AND 2.05 BU.

Belleville Hay

Wednesday, March 16

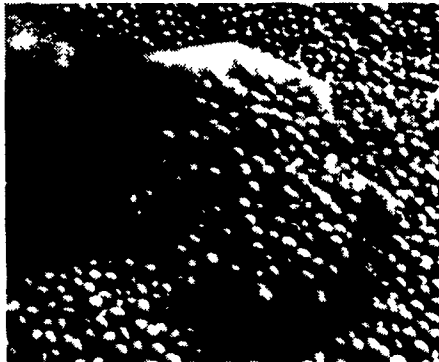
Belleville, PA

Report Supplied by Auction

ALFALFA HAY: 90.00-135.00.
MIXED HAY: 105.00-130.00.
STRAW: 87.50-177.50.



Spread your risk by planting a combination of these HyPerformer soybeans.



HSC 317 Brand

EARLY GROUP III

"RACEHORSE" PERFORMANCE

- Ideally suited to narrow rows or drilling with high populations
- Very attractive showy plant type
- A "racehorse" line. Pour the management to HSC 317 and it responds!
- Very good Phytophthora field tolerance
- Strong stander with very good seed shatter resistance
- Excellent yields in Iowa Illinois and Indiana Performance Trials

HSC 339 Brand

EARLY GROUP III

HEALTHY, RESISTS DISEASES

- Widely adapted with outstanding performance as you go east, all the way to the East Coast
- Strong Phytophthora gene resistance and brown stem rot resistance
- Strong emergence, quick early growth, canopies quickly
- Very versatile adapts well to wide or narrow rows, high yield or stress conditions
- An excellent agronomic package coupled with high-yielding stability
- Four years of replicated yield trials show a 6% yield advantage over Resnik!

HSC 355 Brand

MID GROUP III

PROVEN, CONSISTENT, VERSATILE

- Proven mid Group III leader from east to west across Group III production areas!
- Outstanding emergence, standability and seed shatter resistance
- Very versatile, adapts well to conventional or no-till planting, wide or narrow rows
- Very good Phytophthora and iron deficiency chlorosis tolerance
- A very impressive yield track record from the East Coast, across Ohio, Indiana, and Illinois, to the western Cornbelt



HYPERFORMER VARIETIES ARE AVAILABLE THROUGH THE FOLLOWING DEALERS:

- | | | | |
|---|---|--|--|
| John J. Hoover
Blain, PA
717-536-3597 | Tim Schadler
Fogelsville, PA
610-285-6876 | Lehr's Feed & Farm Supply
Pine Grove, PA
717-345-3309 | Grange Store
Green Park, PA
717-789-3416 |
| | T&S Sales
Bethel, PA
717-933-4725 | Marion Center Milling Co.
Marion Center, PA
412-397-2100 | |

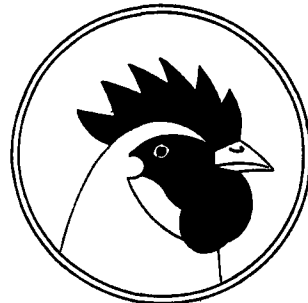
OR THE FOLLOWING **HELENA** CHEMICAL LOCATIONS:

- | | | | | |
|-------------------------------|--------------------------------|----------------------------------|-----------------------------------|-------------------------------|
| Woodstown, NJ
609-769-0147 | Shrewsbury, PA
717-235-7961 | Mifflinville, PA
717-759-1311 | Warriors Mark, PA
814-632-5177 | Wellsboro, PA
717-724-5800 |
|-------------------------------|--------------------------------|----------------------------------|-----------------------------------|-------------------------------|

Performance of seed may be adversely affected by environmental conditions, cultural practices, changes in disease races, insects and other factors beyond HyPerformer Seed Company's control. The limitations of warranty and liability on each bag of HyPerformer Seed Company's seed sold are part of their terms of sales thereof.

RISSER'S POULTRY INC.

P.O. BOX 52 • LITITZ, PA

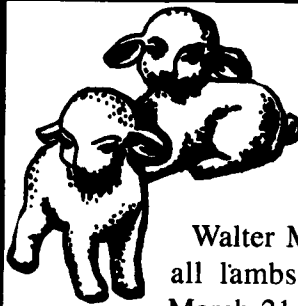


Buyers and Haulers of Leghorn, Medium, and Heavy Fowl.

Over 60 years of prompt payment and dependable service.

Now using carts for the most efficient means of moving spent fowl.

Tel. 717-626-5466
FAX 717-627-3599



**LAMB
CONSIGNORS
An Important Notice**

Walter M. Dunlap and Sons recommends that all lambs for the Easter Trade be consigned March 21 and 28, 1994 since Easter is April 3, 1994. Consign all lambs April 25th for Greek Easter May 2nd.

All lambs consigned to Walter M. Dunlap and Sons on March 21 & 28, April 18 will be sold at auction beginning at 9:30 a.m.

Your consignments are respectfully solicited and for further information contact KEN SMOKER 717-397-5136 (office) or 215-593-2123 (home).

Walter M. Dunlap and Sons
Lancaster Stockyards
Tel. (717) 397-5136

An Old Line Commission Firm Keeping Ahead With The Times